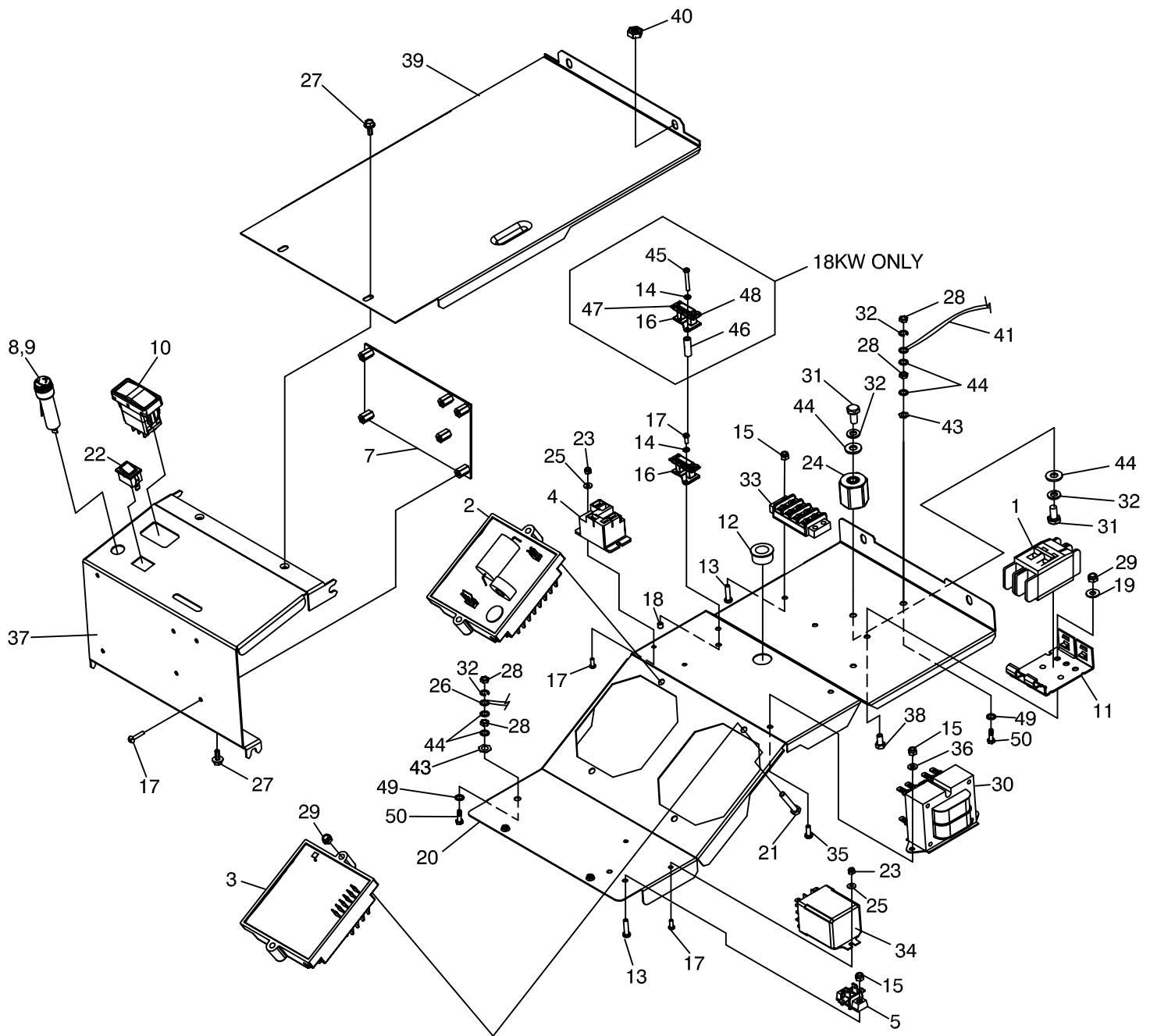


# GROUP



## EXPLODED VIEW: CONTROL PANEL

DRAWING #: 0F9695

APPLICABLE TO: 2006 HSB

## GROUP

ITEM	PART #	QTY.	DESCRIPTION
1	0E7886A	1	CIRCUIT BREAKER 30A X 2P 240V (7KW)
	0E7886D	1	CIRCUIT BREAKER 45A X 2P 240V (10KW)
	0E7886E	1	CIRCUIT BREAKER 50A X 2P 240V (12KW)
	0E7886K	1	CIRCUIT BREAKER 55A X 2P 240V (13KW)
	0E7886J	1	CIRCUIT BREAKER 65A X 2P 240V (16KW)
	0E7886L	1	CIRCUIT BREAKER 80A X 2P 240V (18KW)
2	0A1801	1	ASSEMBLY, BATTERY CHARGER ENGINE
3	0F9719	1	ASSEMBLY, POTTED REGULATOR
4	0C2174	1	RELAY, 12V 25A SPST (NON 7KW)
5	075210A	1	BLOCK TERMINAL 1 POSITION
7	0F8992	1	ASSEMBLY, HOME STANDBY CONTROLLER
	0F1504	1	ASSEMBLY, HOME STANDBY CONTROLLER (7KW)
	0G5715	1	ASSEMBLY, HOME STANDBY CONTROLLER (18KW)
8	032300	1	HOLDER, FUSE
9	022676	1	FUSE, 15 AMP X AGC15
10	0E4494	1	SWITCH, ROCKER DPDT ON-OFF-ON
11	0E7890	1	CIRCUIT BREAKER MOUNTING BRACKET
12	023484E	1	SNAP BUSHING
13	075476	4	SCREW PPHM M4-0.7 x 16mm
14	043182	2	M3 LOCK WASHER (NON 7KW)
15	0E6480	6	NUT HEX LOCK M4-0.7 NYLON INSERT
16	0D4804A		CURRENT TRANSFORMER, IDLE CONTROL (NON 7KW)
	0D4804A	2	CURRENT TRANSFORMER, IDLE CONTROL (18KW)
17	0C1085	12	SCREW PPHM M3-0.5 x 8mm
	0C1085	8	SCREW PPHM M3-0.5 x 8mm (7KW)
18	058000H	2	M3-0.5 TRIC NUT (NON 7KW)
19	023897	2	WASHER FLAT #10
20	0F8040	1	CONTROL, PANEL BOTTOM
	0F9282	1	CONTROL, PANEL BOTTOM (7KW)
21	075235	4	SCREW HHC M5-0.8 x 30mm
22	0E3928	1	SWITCH, SPST

ITEM	PART #	QTY.	DESCRIPTION
23	0D9784	4	NUT HEX LOCK M3-0.5 NYLON INSERT
	0D9784	2	NUT HEX LOCK M3-0.5 NYLON INSERT (7KW)
24	0D8502	1	NEUTRAL BLOCK
25	031879	4	WASHER FLAT #4
	031879	2	WASHER FLAT #4 (7KW)
26	0F5433	1	HARNESS, CONTROL PANEL WIRE (NOT SHOWN)
	0F5437	1	HARNESS, CONTROL PANEL WIRE (NOT SHOWN) (7KW)
27	074908	4	SCREW HHTT, M5-0.8 x 10 BP
28	049813	4	NUT HEX M6-1.0
29	082025	6	NUT HEX LOCK M5-0.8 NYLON INSERT
30	0G0627	1	XFMR 240/16V 1VA&56VA W/PTC
31	022507	2	SCREW HHC 1/4"-20 x 1/2"
32	022097	4	WASHER LOCK M6-1/4"
33	046689	1	TERMINAL STRIP 4 POSITION
34	063617	1	RELAY PANEL 12VDC DPDT 10A 240VAC
35	075475	2	SCREW PPHM M4-0.7 x 10mm
36	043180	2	WASHER FLAT M4
37	0F8041	1	COVER, CONTROL PANEL COMPONENT
	0F9283	1	COVER, CONTROL PANEL COMPONENT (7KW)
38	045770	2	SCREW HHC M5-0.8 x 10mm
39	0E7866	1	COVER, CONTROL PANEL
	0E7867	1	COVER, CONTROL PANEL (7KW)
40	0D3700	8	NUT FLANGE M6-1.0 NYLON
	022097*	8	WASHER LOCK M6-1/4
	022473*	8	WASHER FLAT 1/4-M6
	049813*	8	NUT HEX M6 X 1.0
41	0G0400	1	WIRE ASSEMBLY, GROUND
43	0A1658	2	WASHER LOCK SPECIAL 1/4"
44	022473	6	WASHER FLAT 1/4"-M6
45	0E3969	2	SCREW PPH M3-0.5 X 30mm (18KW)
46	0G5454	2	SPACER (18KW)
47	0G5449A	1	JUMPER WIRE, RED (18KW, NOT SHOWN)
48	0G5449B	1	JUMPER WIRE, BLACK (18KW, NOT SHOWN)
49	0D5303	2	WASHER FLAT .25" ID X 1"OD ZINC
50	0G6131	2	SCREW HHC M6-1.0 x 30mm

\*ITEM 40 FOR MODELS WITH ALUMINUM ENCLOSURE