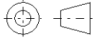


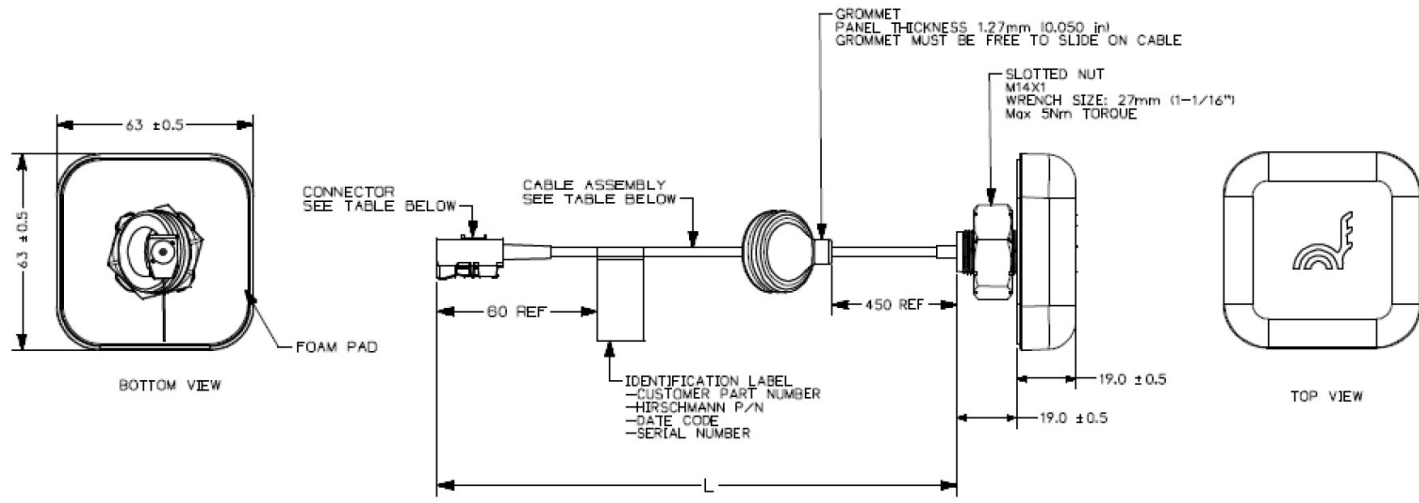
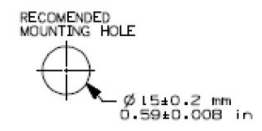
RELEASE NUMBER	REV LTR	REVISION DESCRIPTION	BY	DATE	APPD
P40766-06	-	INITIAL RELEASE	BXH	12/15/10	PCB

1. VENDOR: (HIR) HIRSCHMANN OR ENGINEERING APPROVED EQUIVALENT. VENDOR PART NUMBER HGPS-SX-0117A-01
2. IDENTIFY COMPONENT PER SPEC 49-00051.
3. APPROXIMATE WEIGHT: 0.25 LBS.

DELIVERY MUST CONFORM EXACTLY WITH DRAWING SPECIFICATIONS AND, WHERE REQUIRED BY Q.A., WITH APPROVED Q.A. SAMPLES. ABSOLUTELY NO CHANGES ARE PERMITTED WITHOUT PRIOR APPROVAL BY DTNA. THIS INCLUDES CHANGES TO: SOFTWARE, MATERIALS, INTERNAL COMPONENTS, MANUFACTURING PROCESSES.

ITEM NUMBER 06-82223-000	DESCRIPTION ANTENNA-GPS, EXTERIOR MT, VT	DAIMLER		Daimler Trucks North America			
		THE INFORMATION CONTAINED HEREIN IS PROPRIETARY DATA, AND IS NOT FOR DISSEMINATION OR DISCLOSURE, IN WHOLE OR IN PART, FOR ANY PURPOSE OTHER THAN THAT FOR WHICH IT IS SUBMITTED, EXCEPT AS AUTHORIZED IN WRITING BY DAIMLER TRUCKS NORTH AMERICA LLC (DTNA)					
		MATERIAL APPROVAL		DATE		UNLESS OTHERWISE NOTED, DIMENSIONS AND TOLERANCES ARE DEFINED ACCORDING TO ASME Y14.5M-1994, WITH EXCEPTION PER DTNA 09ENG-WI037	
		N/A		N/A			
		DRAWN BY B. HASLER		DATE 12/15/10			
		CHECKED BY G. HOILAND		DATE 12/15/10			
		RESPONSIBLE ENGINEER		DATE		THIRD ANGLE PROJECTION 	
		L. NGUYEN		12/15/10			
		APPROVED BY P. BRANDT		DATE 12/15/10		UNITS OF MEASURE MM	
		DESCRIPTION ANTENNA-GPS, EXTERIOR MT, VT					
SUPPLEMENTAL DESCRIPTION 81309 HIRSCHMANN							
ITEM/DRAWING NUMBER 06-82223				REVISION LETTER -			
				PAGE 1 of 2			

Change No	Description of change	Date	ECO	OWN	CHK
	INITIAL RELEASE	101214	1012-02	IS	AM



NOTES:
HCC LOGO PAD PRINTED BLACK
INSTALLED SCREWS TO HAVE HEADS FLUSH OR UNDER THE BASE PLATE SURFACE.
INITIAL SAMPLE REPORT PER PPAP LEVEL 3.
RoHS COMPLIANT

CONFIDENTIAL

HGPS-SX-0117A-01	RG174	915 ± 10	FAKRA C-f	DGPS-SX-0117A-01	06-82223-000
HIRSCHMANN PART NUMBER	TYPE	L (mm)	CONNECTOR	MANUFACTURING PART NUMBER	CUSTOMER PART NUMBER
	CABLE ASSEMBLY				

Material		Final date		Drawn weight	Final weight
EP		Tolerance	Surface	Kg	Kg
		DIN ISO 2768-m		m ² /Lb	mm
Drawn	Date	Name	Scale	1:1	1:1
Released	100927	JOAN STAN	Notes	Observation seen to detail for availability	
Title			edges EN ISO 1395		
Title			General tolerances: DIN ISO 1301		
Hirschmann Car Communication Inc			GPS ANTENNA ASSEMBLY		
1116 Centre Rd			EN A1 ED *		
Auburn 01116, MI 48626, USA			Drawing No		
			HGPS-SX-0117A-01		
			Sheet 1 of 1		

This drawing is our property. Any duplication, reproduction, transmission or other use without our prior approval is prohibited. In case of transmission or other use, all rights for patent applications, use of design and trademark, and other intellectual property rights shall remain the property of Hirschmann. In case of doubt, please ask.