

ASSEMBLY - WIRE CONNECTOR - MALE

LIST OF PARTS

ITEM	FORD PART NO	AFL NO.	PART NAME	MATERIAL	COLOR
1	F4SB-14489-MA		SLEEVE-WIRE CON-MALE A-POL	ESB-M4D354-AI	SEE SHEET 2
2	F4ZB-14489-DA		SLEEVE-WIRE CON-MALE B-POL	ESB-M4D354-AI	SEE SHEET 2
3	SEE SHEET 2		GROMMET-WIRE CONNECTOR	ESB-M2D280-A	SEE SHEET 2
4	F0DB-14N003-BA		COVER-WIRE CON-MALE	ESB-M4D354-AI	NATURAL

NOTES: UNLESS OTHERWISE SPECIFIED

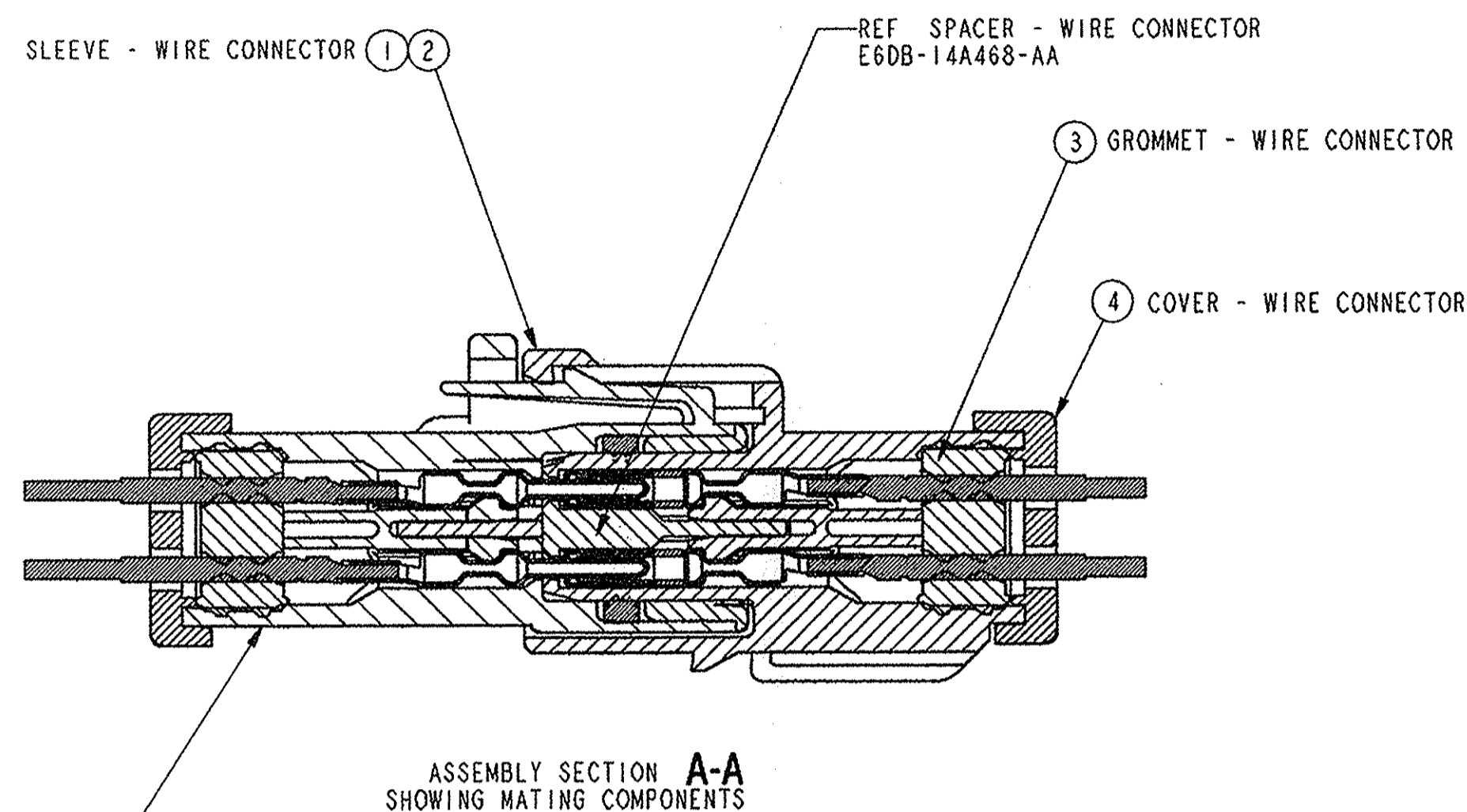
(G) CONNECTOR ASSEMBLY IS DESIGNED TO ACCOMMODATE A WIRE O.D. RANGE AS CHARTED

COVER (IF REQ'D) AND RETAINER TO BE SONIC WELDED TO SLEEVE AND WITHSTAND 110 NEWTONS MINIMUM PULL-OFF FORCE PRODUCTION ASSEMBLIES TO BE TESTED FOR COMPLIANCE USING STATISTICAL PROCESS CONTROL METHODS

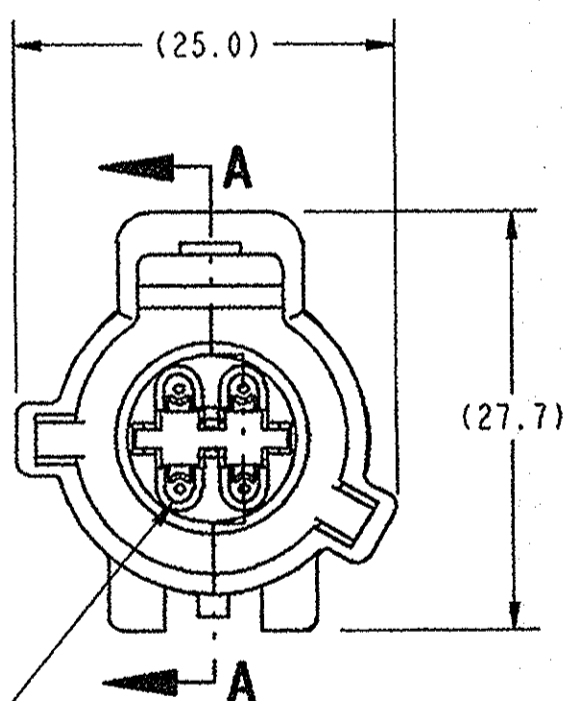
PART MUST COMPLY WITH ES-F0EB-14A464-A

(E) TERMINAL INSERTION 30N MAXIMUM FOR XF2T-14A464-ALA

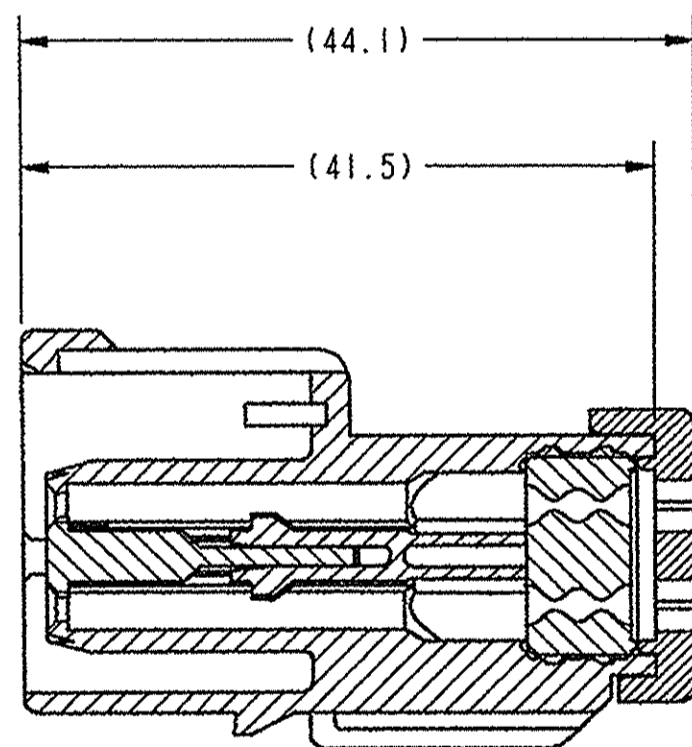
(D) PLASTIC FUZZ ON OR AROUND COVER POST SONIC WELD IS ACCEPTABLE



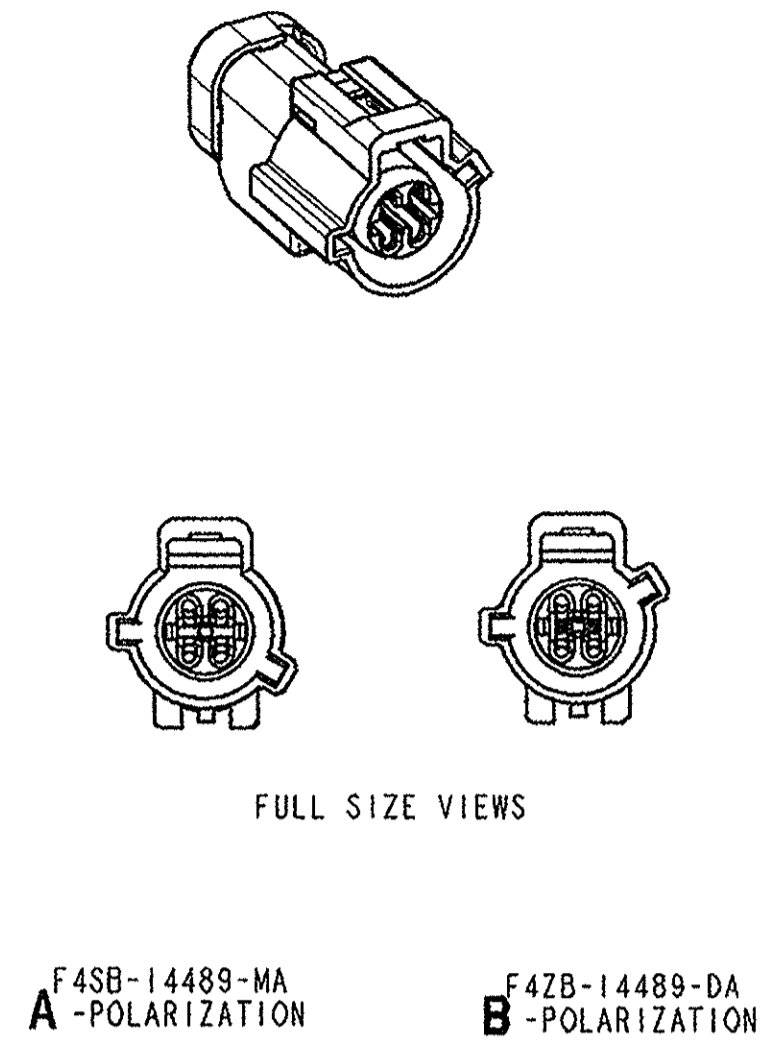
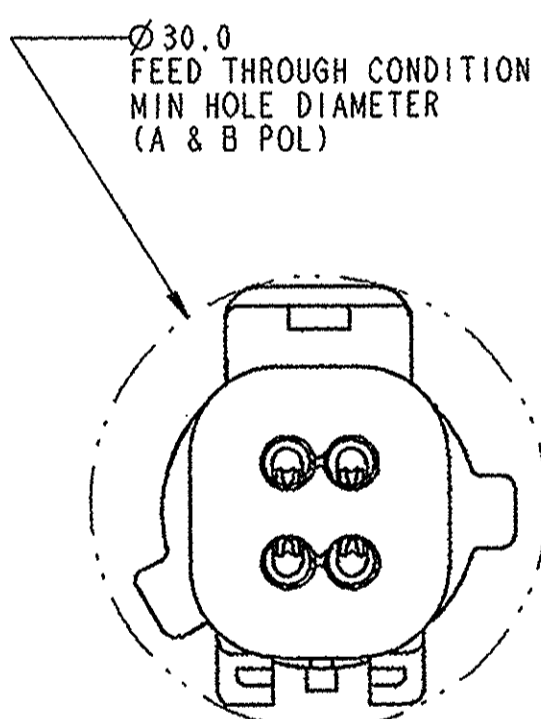
REF MATING CONNECTOR SLEEVE ASSEMBLY - WIRE CONNECTOR - FEMALE APPROPRIATE 14A624



SPECIFICATION 4X ES-E6DB-14A459-A SLEEVE - WIRE CONNECTOR - MALE (MICROPIN)



SECTION A-A



6C3T-14A464-AA	
2W9T-14A464-GA	
XC3T-14A464-EA	
XW7T-14A464-BA	
XF2T-14A464-ALA	
F8ZB-14A464-LA	
XW4T-14A464-DA	
F7DB-14A464-AAA	
F65B-14A464-AGA	
F57B-14A464-BJA	
F57B-14A464-BHA	
F65B-14A464-MA	
F4TB-14A464-BAA	
F57B-14A464-AKA	
F6LB-14A464-AA	
F37B-14A464-TA	
F5TB-14A464-FA	
F4TB-14A464-AUA	
F5AB-14A464-CB	
F4ZB-14A464-NA	
F4TB-14A464-AJA	
F4TB-14A464-AHA	
F4TB-14A464-VA	
F4TB-14A464-CA	
F4UB-14A464-FA	
F3LB-14A464-XA	
F50B-14A464-AA	
F5LB-14A464-AA	
F3LB-14A464-TA	
F58B-14A464-DA	
F4SB-14A464-XD	
F3LB-14A464-PA	
F3LB-14A464-NA	
F3LB-14A464-MA	
F3LB-14A464-LA	
F3LB-14A464-KA	
F3LB-14A464-GA	
F1VB-14A464-FA	
F2TB-14A464-BA	
F0ZB-14A464-AA	
E9TB-14A464-AEA	
E9TB-14A464-ADA	
E9TB-14A464-ACA	
E93B-14A464-FA	
E90B-14A464-CA	
E9TB-14A464-NA	
E9TB-14A464-MA	
E9TB-14A464-LA	
E8EB-14A464-BUA	
E8EB-14A464-CAA	
E8EB-14A464-BZA	
E8EB-14A464-ZA	
E7TB-14A464-EA	
E7EB-14A464-DA	
E79B-14A464-AA	
E67B-14A464-AA	
E6DB-14A464-AA	
E6DB-14A464-AA	
SLEEVE ASSEMBLY NUMBER	
F4ZB-14489-DA	SLEEVE-WIRE CONNECTOR-MALE (B-POL)
F4SB-14489-MA	SLEEVE-WIRE CONNECTOR-MALE (A-POL)

LTRS	ORIGINATOR	CHECKER	ENGR APP	MATL APP
REVISION				
REVISED AND REDRAWN AFTER RELEASED WAS SHOWN ON A 36 X 6 FRAME FORMAT ARCHIVED DATE: 980107 RELEASED XW7T-14A464-BA AI NB00-E-10788298-002				
B	SCHILL	D OSTERHOUSE		
RELEASED XC3T-14A464-EA NB00-E-10880990-004				
S	TINSLEY	D OSTERHOUSE		
RELEASED 2W9T-14A464-GA ARCHIVED DATE: 020923 UEE1 E 11391303 000 20020723 CAD:Y				
ENSING	OSTERHOUSE	MJUDDS		EPC
B	CHG COLOR OF F57B-14A464-AKA FROM BLACK TO BLUE ARCHIVED DATE: 031003 NB00-E-1166598-076 CAD:Y			
SALISBURY	OWENS			EPC
C RELEASED 6C3T-14A464-AA ARCHIVED DATE: 050818 AELE-E-11783935-014 (P) CAD:Y				
OSTERHOUSE	ENSING	HURST		EPC
D	REVISED NOTE ARCHIVED DATE: 060213 AELE-E-11783935-035 (P) CAD:Y			
OSTERHOUSE	HAYWARD	JHULING		EPC
E	ADDED NOTE ARCHIVED DATE: 080502 AELE-E-11783935-116 (P) CAD:Y			
ENSING	FINSTROM	GLEECE		EPC
F1	ESB-M4D354-AI WAS ESB-M4D462-A2			
F2	ESB-M2D280-A WAS ESB-M4D462-A4			
F3	ESB-M4D354-AI WAS ESB-M4D462-A2 ARCHIVED DATE: 080724 AELE-E-11783935-127 (P) CAD:Y			
ENSING	FINSTROM	JHULING		EPC
G1	REVISED NOTE			
G2	ADDED WIRE SIZE CHART			
G3	REVISED LIST OF PARTS COLOR AND PART NO CALLOUTS			
G4	SHEET 2-CORRECTED PART DETAILS ARCHIVED DATE: AELE-E-11783935-152 (P) CAD:Y			
HANSEN	ADAMS	JHULING		EPC

RECEIVE  
APR 17 2009

**W-0276  
A+B**

SALES PRINT

DESCRIPTION	NOMINAL TERMINAL SIZE	NOMINAL WIRE SIZE	BROWN GROMMET 22-14 AWG		BLUE GROMMET 20-14 AWG		GRAY GROMMET 18-14 AWG		WHITE OR BLACK GROMMET - PORTERLON WIRE		MATERIAL
			WIRE O.D. 1.19-2.69mm	WIRE O.D. 1.70-2.69mm	WIRE O.D. 2.41-3.18mm	WIRE O.D. 1.70-2.69mm	WIRE O.D. 1.70-2.69mm	WIRE O.D. 1.70-2.69mm			
TERMINAL-FEMALE (SN)	MICROPIN (1.6mm)	14-16 AWG	F2UB-14487-AA	F2UB-14487-AA	F2UB-14487-AA	F2UB-14487-AA	F2UB-14487-AA	F2UB-14487-AA	F2UB-14487-AA	F2UB-14487-AA	COPPER ALLOY/TIN PLATE
TERMINAL-FEMALE (SN)	MICROPIN (1.6mm)	18-20 AWG	E7EB-14487-AA	E7EB-14487-AA	E7EB-14487-AA	E7EB-14487-AA	E7EB-14487-AA	E7EB-14487-AA	E7EB-14487-AA	E7EB-14487-AA	COPPER ALLOY/TIN PLATE
TERMINAL-FEMALE (SN)	MICROPIN (1.6mm)	18-20 AWG	F85B-14487-AA	F85B-14487-AA	F85B-14487-AA	F85B-14487-AA	F85B-14487-AA	F85B-14487-AA	F85B-14487-AA	F85B-14487-AA	COPPER ALLOY/TIN PLATE
TERMINAL-FEMALE (SN)	MICROPIN (1.6mm)	22 AWG	E65B-14487-AA								COPPER ALLOY/TIN PLATE
TERMINAL-FEMALE (AU)	MICROPIN (1.6mm)	14-16 AWG	F67B-14487-BA	F67B-14487-BA	F67B-14487-BA	F67B-14487-BA	F67B-14487-BA	F67B-14487-BA	F67B-14487-BA	F67B-14487-BA	COPPER ALLOY/GOLD PLATE
TERMINAL-FEMALE (AU)	MICROPIN (1.6mm)	18-20 AWG	F67B-14487-AA	F67B-14487-AA	F67B-14487-AA	F67B-14487-AA	F67B-14487-AA	F67B-14487-AA	F67B-14487-AA	F67B-14487-AA	COPPER ALLOY/GOLD PLATE
TERMINAL-FEMALE (AU)	MICROPIN (1.6mm)	22 AWG	F67B-14487-CA								COPPER ALLOY/GOLD PLATE

<b>AFL</b> Automotive Division		AFL / EPC DRAWING NO. W-0276 A & B	
REFERENCE			
PART MUST COMPLY WITH MATERIAL SPECIFICATION WSS-M99P9999-A1 TO HELP SAFEGUARD HEALTH, SAFETY AND THE ENVIRONMENT.			
DRAFTED IN ACCORDANCE WITH FAO ENGINEERING DRAFTING STANDARD CURRENT AT INITIAL RELEASE		3RD ANGLE PROJ DIMENSIONS IN MILLIMETERS	
CAD TYPE X-OTHER	CAD LOC N/A	CAD FILE	EM IS MASTER
OPER. NO.	UNIT	DRAWING E6DB-14A464-AA	
DESIGN HETTEL	DETAIL B SCHILL	TITLE SLEEVE ASSEMBLY WIRE CONNECTOR-MALE	SHT 1 OF 2
CHECKED OSTERHOUSE	SAFETY		
SCALE 2:1	DATE 090313	DIVISION	PLANT

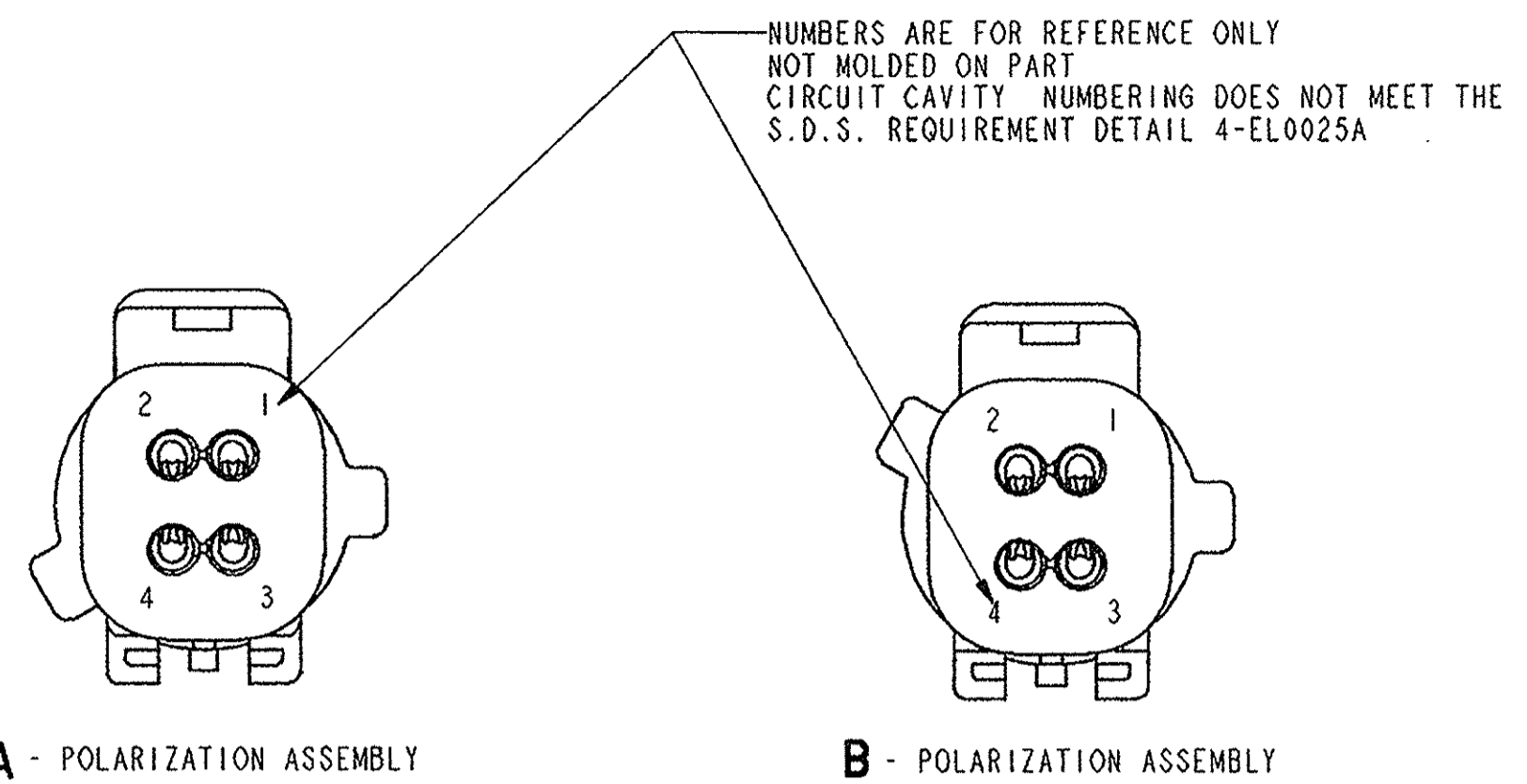
micad 4-17-09

DRW SIZE A1

LTRS	REVISION		
ORIGINATOR	CHECKER	ENGR APP	MATL APP

CONNECTOR ASSEMBLY NUMBER	AFL / EPC ASSEMBLY NUMBER	SLEEVE PART NUMBER	POL.	SLEEVE COLOR	TOTAL OPEN HOLES	OPEN HOLE POSITION				GROMMET PART NUMBER	GROMMET COLOR	COVER PART NUMBER
						1	2	3	4			
E6DB-14A464-AA	-	F4SB-14489-MA	A	BLACK	4	1	2	3	4	E6DB-14603-BA	GRAY	
E6DB-14A464-NA	-	F4ZB-14489-DA	B	GRAY	4	1	2	3	4	E6DB-14603-BA	GRAY	
E67B-14A464-AA	-	F4SB-14489-MA	A	BLACK	2	1	3			E67B-14603-BA	GRAY	
E79B-14A464-AA	-	F4SB-14489-MA	A	BLACK	3	1	2	3		E79B-14603-AA	GRAY	
E7EB-14A464-DA	-	F4ZB-14489-DA	B	GRAY	2	2	4			E67B-14603-BA	GRAY	
E7TB-14A464-EA	-	F4ZB-14489-DA	B	GRAY	3	1	2	3		E79B-14603-AA	GRAY	
E8EB-14A464-ZA	-	F4SB-14489-MA	A	BLACK	2	1	3			E8EB-14603-TA	BLUE	
E8EB-14A464-BZA	-	F4SB-14489-MA	A	BLACK	4	1	2	3	4	E8EB-14603-PA	BLUE	
E8EB-14A464-CAA	-	F4ZB-14489-DA	B	GRAY	4	1	2	3	4	E8EB-14603-PA	BLUE	
E8EB-14A464-BUA	-	F4SB-14489-MA	A	BLACK	3	1	2	3		E8EB-14603-RA	BLUE	
E9TB-14A464-LA	-	F4ZB-14489-DA	B	GRAY	2	1	3			E67B-14603-BA	GRAY	
E9TB-14A464-MA	-	F4SB-14489-MA	A	BLACK	1				4	E8AB-14603-AA	GRAY	
E9TB-14A464-NA	-	F4SB-14489-MA	A	BLACK	1		2			E8AB-14603-AA	GRAY	
E90B-14A464-CA	-	F4SB-14489-MA	A	BROWN	4	1	2	3	4	E6DB-14603-BA	GRAY	
E93B-14A464-FA	-	F4SB-14489-MA	A	BLACK	3	1	3	4		E79B-14603-AA	GRAY	
E9TB-14A464-ACA	-	F4ZB-14489-DA	B	NATURAL	2	1	3			E67B-14603-BA	GRAY	
E9TB-14A464-ADA	-	F4ZB-14489-DA	B	NATURAL	4	1	2	3	4	E6DB-14603-BA	GRAY	
E9TB-14A464-AEA	-	F4ZB-14489-DA	B	NATURAL	2	2	4			E67B-14603-BA	GRAY	
F0ZB-14A464-AA	-	F4SB-14489-MA	A	BLACK	2	2	3			E8AB-14603-BA	GRAY	
F2TB-14A464-BA	-	F4ZB-14489-DA	B	GRAY	1	2				E8AB-14603-AA	GRAY	
F1VB-14A464-FA	-	F4ZB-14489-DA	B	NATURAL	3	1	2	3		E79B-14603-AA	GRAY	
F3LB-14A464-GA	-	F4ZB-14489-DA	B	NATURAL	4	1	2	3	4	E8EB-14603-PA	BLUE	
F3LB-14A464-KA	-	F4ZB-14489-DA	B	GRAY	2	2	4			E8EB-14603-TA	BLUE	
F3LB-14A464-LA	-	F4ZB-14489-DA	B	GRAY	3	1	2	3		E8EB-14603-RA	BLUE	F0DB-14N003-BA
F3LB-14A464-MA	-	F4SB-14489-MA	A	BLACK	3	1	2	3		E8EB-14603-RA	BLUE	F0DB-14N003-BA
F3LB-14A464-NA	-	F4ZB-14489-DA	B	NATURAL	4	1	2	3	4	F3LB-14603-KA	BLUE	
F3LB-14A464-PA	-	F4SB-14489-MA	A	BLACK	2	1	3			F3LB-14603-LA	BLUE	
F4SB-14A464-XD	-	F4SB-14489-MA	A	BLUE	4	1	2	3	4	E8EB-14603-PA	BLUE	F0DB-14N003-BA
F58B-14A464-DA	-	F4SB-14489-MA	A	BROWN	4	1	2	3	4	E8EB-14603-PA	BLUE	
F3LB-14A464-TA	-	F4SB-14489-MA	A	BROWN	3	1	2	3		E8EB-14603-RA	BLUE	
F5LB-14A464-AA	-	F4SB-14489-MA	A	BLACK	3	1	3	4		E8EB-14603-RA	BLUE	
F50B-14A464-AA	-	F4ZB-14489-DA	B	GRAY	2	2	4			E8EB-14603-TA	BLUE	F0DB-14N003-BA
F3LB-14A464-XA	-	F4SB-14489-MA	A	BLACK	4	1	2	3	4	E6DB-14603-BA	GREY	F0DB-14N003-BA
F4UB-14A464-FA	-	F4SB-14489-MA	A	BLACK	1	2				F4UB-14603-KA	BLUE	
F4TB-14A464-CA	-	F4ZB-14489-DA	B	NATURAL	3	1	2	3		E8EB-14603-RA	BLUE	
F4TB-14A464-VA	-	F4ZB-14489-DA	B	GRAY	1	2				F4UB-14603-KA	BLUE	
F4TB-14A464-AHA	-	F4SB-14489-MA	A	BLACK	1				4	F4UB-14603-KA	BLUE	
F4TB-14A464-AJA	-	F4SB-14489-MA	A	BLACK	2	2	3			F4TB-14603-EA	BLUE	
F4ZB-14A464-NA	-	F4ZB-14489-DA	B	NATURAL	4	1	2	3	4	E8EB-14603-PA	BLUE	
F5AB-14A464-CB	-	F4SB-14489-MA	A	BLUE	3	1	2	3		E8EB-14603-RA	BLUE	
F4TB-14A464-AUA	-	F4ZB-14489-DA	B	NATURAL	2	2	4			E8EB-14603-TA	BLUE	
F5TB-14A464-FA	-	F4ZB-14489-DA	B	GRAY	3	1	2	4		E8EB-14603-RA	BLUE	
F3TB-14A464-TA	-	F4ZB-14489-DA	B	NATURAL	2	1	3			E8EB-14603-TA	BLUE	
F6LB-14A464-AA	-	F4SB-14489-MA	A	BLACK	3	1	2	3		F6LB-14603-AA	BLUE	
F5TB-14A464-AKA	-	F4SB-14489-MA	A	BLUE	2	2	3			F4TB-14603-EA	BLUE	
F4TB-14A464-BAA	-	F4ZB-14489-DA	B	NATURAL	4	1	2	3	4	E8EB-14603-PA	BLUE	F0DB-14N003-BA
F65B-14A464-MA	-	F4ZB-14489-DA	B	GRAY	2	1	2			F65B-14603-DA	BLUE	
F5TB-14A464-BHA	-	F4SB-14489-MA	A	BLACK	4	1	2	3	4	E8EB-14603-PA	BLUE	F0DB-14N003-BA
F5TB-14A464-BJA	-	F4ZB-14489-DA	B	GRAY	4	1	2	3	4	E8EB-14603-PA	BLUE	F0DB-14N003-BA
F65B-14A464-AGA	-	F4ZB-14489-DA	B	GRAY	3	2	3	4		E8EB-14603-RA	BLUE	
F7DB-14A464-AAA	-	F4SB-14489-MA	A	BLACK	3	2	3	4		E8EB-14603-RA	BLUE	F0DB-14N003-BA
XW4T-14A464-DA	-	F4SB-14489-MA	A	BLUE	4	1	2	3	4	E-3483-001A	BROWN	F0DB-14N003-BA
F8ZB-14A464-LA	-	F4SB-14489-MA	A	BLACK	3	2	3	4		E8EB-14603-RA	BLUE	
XF2T-14A464-ALA	-	F4ZB-14489-DA	B	GRAY	4	1	2	3	4	E7TB-14603-CA	WHITE	F0DB-14N003-BA
XW7T-14A464-BA	-	F4ZB-14489-DA	B	GRAY	2	1	3			E8EB-14603-TA	BLUE	
XC3T-14A464-EA	-	F4SB-14489-MA	A	BLACK	2	1	2	4		E8EB-14603-TA	BLUE	
2W9T-14A464-GA	-	F4SB-14489-MA	A	BLACK	2	1	3			E8EB-14603-TA	BLUE	F0DB-14N003-BA
6C3T-14A464-AA	-	F4SB-14489-MA	A	BLACK	2	1	2			F65B-14603-DA	BLUE	

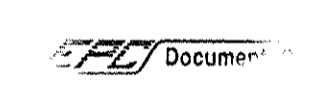
64  
B



A - POLARIZATION ASSEMBLY

B - POLARIZATION ASSEMBLY

RECEIVED  
APR 17 2009



W-0276  
A+B

SALES PRINT

		AFL / EPC DRAWING NO. W-0276 A & B	
REFERENCE			
PART MUST COMPLY WITH MATERIAL SPECIFICATION WSS-M99P9999-A1 TO HELP SAFEGUARD HEALTH, SAFETY AND THE ENVIRONMENT.			
DRAFTED IN ACCORDANCE WITH FAO ENGINEERING DRAFTING STANDARD CURRENT AT INITIAL RELEASE		3RD ANGLE PROJ DIMENSIONS IN MILLIMETERS	
CAD TYPE	CAD LOC.	CAD FILE	EM IS MASTER
OPER. NO.	UNIT	DRAWING E6DB-14A464-AA	
DESIGN HETTEL	DETAIL SCHILL	TITLE SLEEVE ASSEMBLY - WIRE CONNECTOR - MALE	SHT 2 OF 2
CHECKED OSTERHOUSE	SAFETY		
SCALE 2:1	DATE 090313	DIVISION	

4-17-09

DRW SIZE A1