

PROSCAN

DSS® Receiver  
User's Manual

# Safety Information

## WARNING

To reduce risk of fire or shock hazard, do not expose this receiver to rain or moisture.

## WARNING

RISK OF ELECTRIC SHOCK  
DO NOT OPEN



This symbol indicates “dangerous voltage” inside the product that presents a risk of electric shock or personal injury.



This symbol indicates important instructions accompanying the product.

**TO REDUCE THE RISK OF ELECTRIC SHOCK, DO NOT REMOVE COVER (OR BACK). NO USER SERVICEABLE PARTS INSIDE. REFER SERVICING TO QUALIFIED SERVICE PERSONNEL.**

## Cautions

**Do not stack electronic components or other objects on top of the DSS® Receiver.** The slots on top of the receiver must be left uncovered to allow proper airflow to the unit. Blocking the airflow to the unit could impair performance or damage your receiver and other components.

Do not stack the DSS receiver on top of a “hot component” such as an audio power amplifier.

FCC Regulations state that unauthorized changes or modifications to this equipment may void the user’s authority to operate it.

### Note to Cable TV Installer:

This reminder is provided to call your attention to Article 820-40 of the National Electrical Code (Section 54 of the Canadian Electrical Code, Part 1) which provides guidelines for proper grounding and, in particular, specifies that the cable ground shall be connected to the grounding system of the building as close to the point of cable entry as practical.

### Note to Satellite Dish Installer:

This reminder is provided to call your attention to Article 810 and in particular article 810-15 of the National Electrical Code which covers proper installation and grounding of television receiving equipment as well as to article 820-40 of the National Electrical Code which specifies that the satellite dish cable ground shall be connected to the grounding system of the building as close to the point of cable entry as practical.

### IMPORTANT NOTICE:

This device incorporates an anticopy process technology that is protected by U.S. patents and other intellectual property rights. The anticopy process is licensed for non-commercial, home use only. Reverse engineering or disassembly is prohibited.

# Table of Contents

<b>First Things First .....</b>	<b>3</b>
What's in the Box .....	5
Using This Manual .....	6
<b>The Only Rule: Point and Select .....</b>	<b>7</b>
<b>The Program Guide .....</b>	<b>9</b>
Bringing Up the Program Guides .....	10
Using the GUIDE Button .....	10
Scrolling Channel By Channel .....	10
Scrolling Page By Page .....	11
Tuning to a Program .....	11
Selecting A Program Guide from the Main Menu .....	11
Types of Program Guides .....	12
Sorting the Grid and Info Guides .....	14
Exiting A Program Guide .....	15
<b>The Menu System .....</b>	<b>17</b>
Using the Menu System .....	18
Exiting a Screen .....	18
Changing the Main Menu's Appearance .....	19
Menu Descriptions .....	20
<b>Profiles .....</b>	<b>21</b>
Personalizing The User Profiles .....	22
Creating and Editing a Profile .....	23
Editing the Channel List .....	24
Setting the Ratings Limit .....	24
Locking a User's Profile .....	25
Controlling the System .....	26
Setting Up Spending Limits .....	26
Locking the System .....	27
Unlocking the System .....	27
Choosing Your Profile to Watch DSS® Programming .....	28
<b>More Features .....</b>	<b>29</b>
Pay-Per-View Programs .....	30
Using the Attractions Guide .....	31
Using the Purchases Menu .....	32
Timer Feature .....	33
Connecting the VCR Controller .....	33
Recording with Timer .....	34
Editing or Canceling a Timer .....	34
One-Button Recording with Timer .....	35

# Table of Contents

Using Fetch .....	35
The Mailbox .....	35
Alternate Audio Programs .....	36
ALT AUD Remote Button .....	36
Picture Size .....	37
System Test .....	37
New Access Card Setup .....	37
Using On-Line Help .....	38
<b>Sending the DSS® Signal to Multiple TVs .....</b>	<b>39</b>
The Agile Modulator .....	40
Selecting an Output Channel .....	42
Single TV Output .....	42
Remote Control Signal Extender .....	43
<b>Connections .....</b>	<b>45</b>
Connecting Your DSS® Receiver to Your TV .....	46
Choosing a Connection .....	47
Interactive Setup .....	56
Disabling Interactive Setup .....	56
<b>Reference .....</b>	<b>57</b>
Parts of the DSS® System .....	58
Front Panel Controls .....	60
Back Panel Controls .....	61
Remote Control Buttons .....	62
Programming the Remote Control .....	63
Using the Remote Buttons to Control a Device .....	65
Remote Codes .....	66
Glossary .....	68
Troubleshooting .....	70
<b>Appendix A: Warranty Information .....</b>	<b>71</b>
<b>Appendix B: FCC Regulations .....</b>	<b>75</b>
<b>Appendix C: Accessories .....</b>	<b>77</b>

DSS® is a registered trademark of DIRECTV, Inc., a unit of GM Hughes Electronics

StarSight-Licensed: The manufacture and sale of the television schedule feature of this product was licensed under one or more of the following patents of StarSight Telecast, Inc.; U.S. Patent Nos. 4,706,121; 4,977,455; 5,151,789; and 5,353,121.

Allow me to introduce myself...

My name is Jay, and I wrote this **PROSCAN User Manual**. You probably weren't expecting a personal introduction, but then, a **PROSCAN DSS®** system is designed to give you more than you expected—even in the **User Manual**.

## Read the First Four sections

The first four sections of the manual introduce you to your **DSS®** system, and show you how to use the on-screen guides and menus. Reading these sections gives you the basic information you need to navigate the **DSS®** system.

## Putting You in Control

The fifth section of the book introduces you to the **User Profiles** feature, which lets you control the way you watch **DSS®** programming by creating individual channel lists, and by setting ratings limits and spending limits.

## What's Left?

The rest of the book highlights the remaining features, and includes reference information such as a connections guide, a glossary, and an index.

# First Things First

## 1 First Things First



## 2 Point and select



## 3 The Program Guide



## 4 The Menu System



## 5 Profiles

Take some time right now to read at least the first five sections. Then, as you have time, you can check out the rest of the book.

# First Things First

## What is the DSS® System?

You've purchased the DSS® Digital Satellite System, so you already know a lot of the great things it offers. You know that the DSS® system uses the latest satellite technology to deliver television programming to your home. And you know that the transmissions are digital, so the quality of the picture and audio rivals that of laser discs and CDs. You know the dish is small—18 inches wide—and that it often can be installed in a matter of hours. (See the DSS® Satellite Dish Antenna Installer Guide for specific information.)

Those are the some of the things you probably know about the DSS® system. But what about the things you don't know? For instance...

- **The DSS® system works like your TV.** Pick up the DSS® remote and push the DSS® button. Press the Channel Up/Down buttons to scan through the channels. Press the number keys to go directly to a channel.
- There is an **on-screen Program Guide**. The Program Guide is like a TV listing in the newspaper. It is designed to help you select regular programs and pay-per-view events. You can also sort the Guide to list only specific types of programs. You can select Sports, for example, and your guide will show current and upcoming sports programs only. Or Movies. Or News.
- There is the **on-screen Menu System** that allows you to customize your system. You can set up your system, build channel lists, preview coming attractions, set spending limits, and receive mail from your program providers.
- There are three types of **On-line Help** to assist you in learning how to use the DSS® system: Auto Help, Help buttons, and the About DSS menu. (See "Using On-line Help," page 38.)

## Ordering DSS® Programming

After you have installed your system, you should contact the service providers, DIRECTV and USSB to receive DSS® programming.

Programming with DIRECTV: Call 1-800-347-3288

Programming with USSB: Call 1-800-204-USSB

**When you order programming, you need to know your Access Card number. To get the number, select *Options* from the *Main* menu, and then select *System Test*. Wait for the system to run all of its tests. The Access Card number is displayed at the end of the system test.**

**Write the Access Card number in the space below for easy reference:**

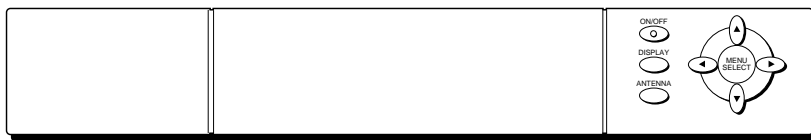
---

# First Things First

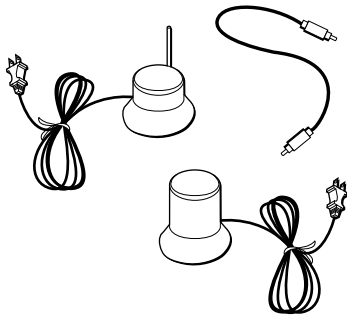
## What's in the Box

The following items come with your ProScan DSS® receiver:

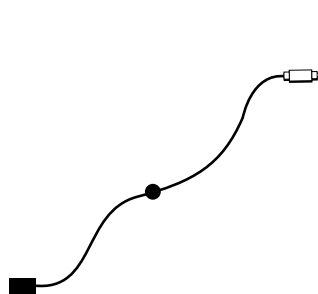
- Receiver (with access card inserted)
- Remote Control Signal Extender
- VCR Controller
- Remote Controls



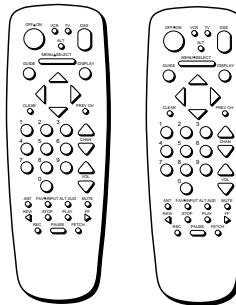
**Receiver**



**Remote Control Signal Extender**



**VCR Controller**

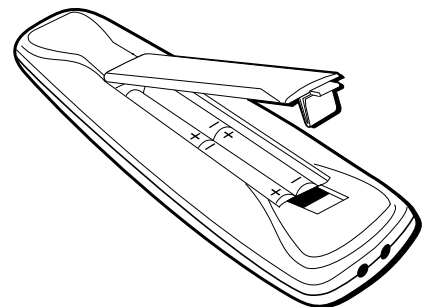


**Remote Controls**

## Installing Batteries In the Remote Control

Follow these steps whenever you need to install or change the batteries in your DSS® remote.

1. Pull off the cover of the battery compartment.
2. Place four AAA batteries as shown, matching the + and - end of each battery in each compartment.
3. Replace the cover.



# First Things First

## Using This Manual

There are a couple of conventions used in this manual that might help you read it.

- Words that appear in ALL CAPS indicate the name of a button.
- The names of on-screen menu option are shown in *italics*.

## Important Note about This User's Manual

This manual assumes that your DSS® system has been installed, meaning:

1. The DSS® satellite dish has been installed, correctly pointed at the satellite, and connected to your DSS® receiver.
2. The DSS® receiver is connected to your television and to a telephone line.
3. The access card is installed in your DSS® receiver.

Your access card has been matched to your receiver, and should already be installed when you take the receiver out of the packing box. The access card should only be taken out of the DSS® receiver when you are issued a new card by your programming providers.

4. The DSS® remote control has batteries and can be programmed to control both your DSS® receiver and your TV (if your TV is remote-controllable).

If your system has not been installed, refer to the satellite dish Installer's Guide for information regarding proper installation. Then, refer to the section, "Connections," in this manual. See your dealer for specific information regarding professional installation or the purchase of a Self-Installer's Kit.



# Point and Select

## A Navigation Method

**Point and Select** is a method of navigating through the menu system and program guides. Once you know how to use the **Point and Select** method, you can explore the menus to learn more about how your **DSS®** system works.

1 First Things First



2 Point and select



3 The Program Guide



4 The Menu System



5 Profiles

Once you understand Point and Select, you can do just about anything you want with the menuing system.

# The Only Rule: Point and Select

## What is Point and Select?

Point and Select is the two-step method you use to control the DSS® system.

### 1. Point

You point by pressing the arrow keys on the remote or front panel. Pressing the arrow keys moves the on-screen highlight to different items in the Program Guide and the menu screens. Pressing an arrow once moves the highlight one space in the direction of the arrow.

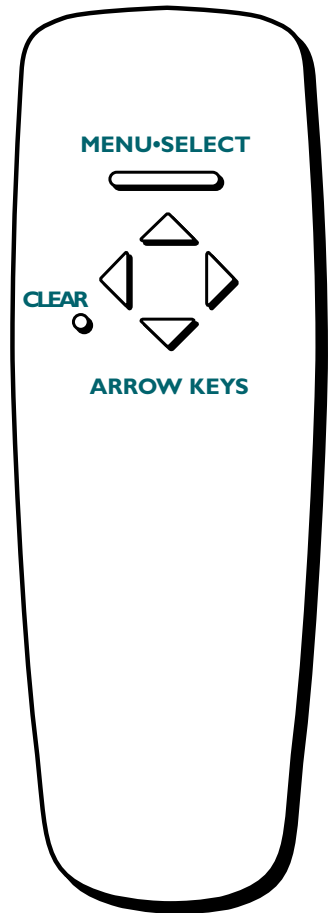
For example, to point down (that is, to move the highlight toward the bottom of the screen), press the down arrow. To point right, press the right arrow.

### 2. Select

Once you have pointed to an item on the screen, select it by pressing the MENU•SELECT button on the remote or front panel. Selecting an item tells the menu system to go ahead and make the change you have indicated.

For example, the instructions in the User's Manual might tell you to Point to the *Help* button and press MENU•SELECT.

Once you've got the hang of the Point and Select rule, you can use any part of the DSS® system, beginning with the Program Guide.



Don't worry about getting stuck inside a menu. Pressing the **CLEAR** button on the remote takes you out of the menu system and back to the program you were watching.

# The Program Guide

## What is a Program Guide?

A program guide is an on-screen programming schedule. There are several types of guides, each presenting the schedule in a different format.

Using the Program Guide is easy as long as you remember the Point and Select rule. Point to items on the screen by pressing the arrow keys on the remote or front panel. Then, press **MENU•SELECT** to tune to that program.

1 First Things First



2 Point and select



3 The Program Guide



4 The Menu System



5 Profiles

Take some time to explore the different types of Program Guides and use the one that best suits your viewing habits.

# The Program Guide

## Bringing Up the Program Guides

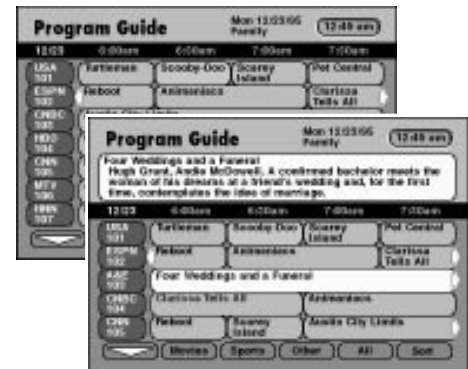
You can access the program guides by using the GUIDE button on the remote, or by selecting *Program Guide* from the Main menu.

## Using the GUIDE Button

Each press of the GUIDE button takes you to an alternate type of program guide:

- Press GUIDE once to see the seven-channel Grid Guide.
- Press GUIDE again to see the five-channel Info Guide which contains program information.

You can switch the order in which the Grid Guide and the Info Guide appear by selecting *Preferences* from the *Assistance* menu, and then using the arrow keys to set the *Guide Format* option.



## Getting Around in the Program Guide

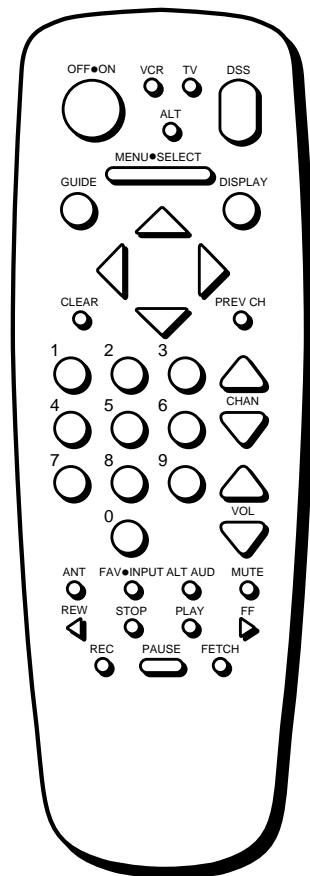
This section describes how to change channels and move around the Program Guide.

## Changing Channels with the number keys (0-9)

You can point quickly to any channel in the Program Guide by entering the channel number with the number keys (0-9). For example, to point to the first listing for Channel 128, press the numbers 1-2-8 on the remote. To point to Channel 102, press 1-0-2.

## Scrolling Channel By Channel

The programs that you see on the TV screen make up one section—or page—of the total Program Guide. You can scroll to other sections using the arrows: point to other times with the left and right arrows; point to other channels with the up and down arrows.



# The Program Guide

## Scrolling Page By Page

If you want to scroll up or down through the Program Guide faster, press the Channel Up/Down buttons on the remote control. The highlight scrolls a page at a time. This is called “paging.”

## Tuning to a Program

- To tune directly to a program listed in the guide, point to the program and press MENU•SELECT.
- To see information about a program in the guide, press DISPLAY. Then, you can select *View Channel* to tune to that channel.

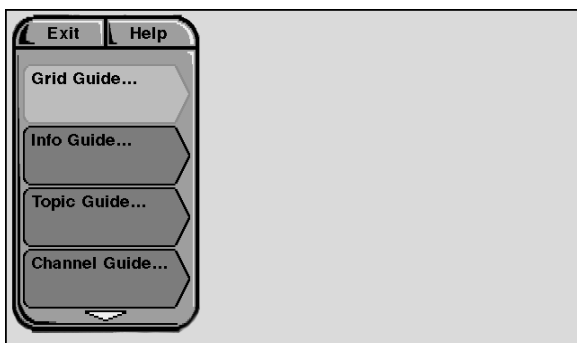
If you select a future program, you are given program details. If you choose a pay-per-view event, a second screen allows you to buy the program, find out more information, or return to the Guide.

## Selecting A Program Guide from the Main Menu

When you access the program guides through the Main menu, you have more available options:

1. Press MENU•SELECT to bring up the Main menu.
2. Point to *Program Guide* and press MENU•SELECT.

The Program Guide menu screen appears.



*This is the Program Guide menu. Use the arrow to scroll down to see the Attractions Guide option.*

**If you select a future program, you are given program details. If you choose a pay-per-view event, a second screen allows you to purchase the program, find out more information, or return to the Guide.**

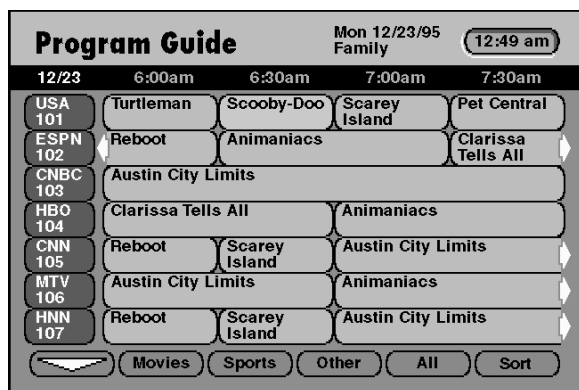
# The Program Guide

## Types of Program Guides

There are five types of program guides: the Grid Guide, the Info Guide, the Topic Guide, the Channel Guide, and the Attractions Guide.

### The Grid Guide

Shows the schedule in a time-and-channel format, similar to a TV schedule listed in a newspaper.



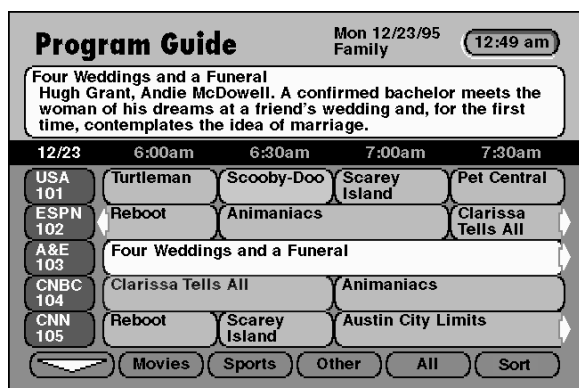
The screenshot shows the 'Program Guide' interface for Monday, 12/23/95, at 12:49 am. The interface is titled 'Program Guide' and includes a date and time display. Below the title, there is a grid of program listings for seven channels (USA 101, ESPN 102, CNBC 103, HBO 104, CNN 105, MTV 106, HNN 107) across four time slots (6:00am, 6:30am, 7:00am, 7:30am). The programs listed are: Turtleman, Scooby-Doo, Scarey Island, Pet Central, Reboot, Animaniacs, Clarissa Tells All, Austin City Limits, and others. At the bottom, there are buttons for 'Movies', 'Sports', 'Other', 'All', and 'Sort'.

12/23	6:00am	6:30am	7:00am	7:30am
USA 101	Turtleman	Scooby-Doo	Scarey Island	Pet Central
ESPN 102	Reboot	Animaniacs		Clarissa Tells All
CNBC 103	Austin City Limits			
HBO 104	Clarissa Tells All		Animaniacs	
CNN 105	Reboot	Scarey Island	Austin City Limits	
MTV 106	Austin City Limits		Animaniacs	
HNN 107	Reboot	Scarey Island	Austin City Limits	

*The seven-channel Grid Guide.*

### The Info Guide

Shows you five channels and includes a brief description of the selected program.



The screenshot shows the 'Program Guide' interface for Monday, 12/23/95, at 12:49 am. The interface is titled 'Program Guide' and includes a date and time display. Below the title, there is a description of the selected program: 'Four Weddings and a Funeral' by Hugh Grant, Andie McDowell. Below the description, there is a grid of program listings for five channels (USA 101, ESPN 102, A&E 103, CNBC 104, CNN 105) across four time slots (6:00am, 6:30am, 7:00am, 7:30am). The programs listed are: Turtleman, Scooby-Doo, Scarey Island, Pet Central, Reboot, Animaniacs, Clarissa Tells All, Austin City Limits, and others. At the bottom, there are buttons for 'Movies', 'Sports', 'Other', 'All', and 'Sort'.

12/23	6:00am	6:30am	7:00am	7:30am
USA 101	Turtleman	Scooby-Doo	Scarey Island	Pet Central
ESPN 102	Reboot	Animaniacs		Clarissa Tells All
A&E 103	Four Weddings and a Funeral			
CNBC 104	Clarissa Tells All		Animaniacs	
CNN 105	Reboot	Scarey Island	Austin City Limits	

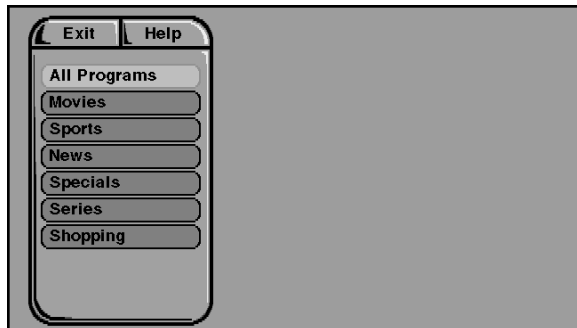
*The five-channel Info Guide gives you a brief program description.*

By default, the Grid Guide appears when you press the **GUIDE** button on the remote. Go to the **Preferences Menu** (located within the **Assistance Menu**) to change the default guide from the Grid Guide to the Info Guide.

# The Program Guide

## The Topic Guide

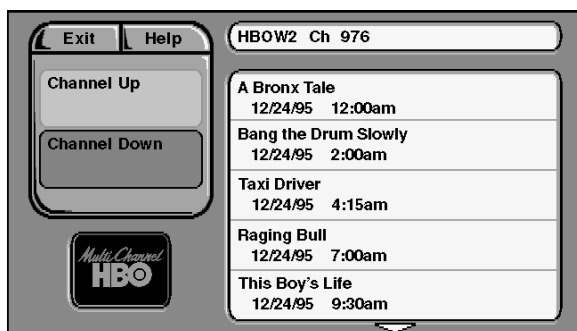
Lets you sort the programming schedule to show certain topics, such as "movies" or "sports."



*The Topic guide.*

## The Channel Guide

Displays the programming schedule in a channel-by-channel format.



*The Channel guide.*

## The Attractions Guide

Displays coming attractions and special events information.



*The Attractions guide.*

See the section on purchasing pay-per-view programs for more information on the Attractions guide.

# The Program Guide

## Sorting the Grid and Info Guides

There are six on-screen choices—called “buttons”—at the bottom of the Grid Guide and the Info Guide: down arrow, Movies, Sports, Other, All, and Sort.

Program Guide		Mon 12/23/95 Family		12:49 am
12/23	6:00am	6:30am	7:00am	7:30am
USA 101	Turtleman	Scooby-Doo	Scarey Island	Pet Central
ESPN 102	Reboot	Animaniacs	Clarissa Tells All	
CNBC 103	Austin City Limits			
HBO 104	Clarissa Tells All	Animaniacs		
CNN 105	Reboot	Scarey Island	Austin City Limits	
MTV 106	Austin City Limits	Animaniacs		
HNN 107	Reboot	Scarey Island	Austin City Limits	

Buttons: [Down Arrow] [Movies] [Sports] [Other] [All] [Sort]

*The Sorting buttons are at the bottom of the screen.*



The arrow button allows you to scroll down through other channels in the guide. Point to the down arrow, and then press MENU•SELECT to scroll down through the program guide.

## Using the Sorting Buttons

The remaining buttons at the bottom of the guide are called “sorting buttons.” These buttons allow you to simplify the guide to show specific types of information such as movies, or sports.

### Movies

The Movies button lists movies only. After selecting Movies, point to the *Theme* button that appears and press MENU•SELECT to sort the guide to list specific types of movies, such as comedies or thrillers.

### Sports

The Sports button lists sporting events only. After selecting Sports, point to the *Theme* button that appears and press MENU•SELECT to sort the guide to highlight specific types of sports, such as basketball or soccer.



# The Program Guide

## Other

Allows you choose from a list of sorting topics. Once you have selected a sorting topic from the list, your guide will be simplified to show only that type of program.

After selecting a topic, a *Themes* button may appear in the place of the *Other* button.

## All

Resets the guide to show all available channels and listings.

## Sort

The Sort button takes you to the Guide Filter menu screen

## Using the Themes Button

After you select one of the sorting buttons, the name of that button changes into the *Themes* button. Use the *Themes* button to further sort the Grid or Info Guide to show subtopics (“themes”). For example, you could simplify the guide to show “baseball” under the Sports sorting button, or “comedies” under Movies.

## Exiting A Program Guide

There are two ways to exit a Program Guide:

- Point to a channel and press MENU•SELECT.
- Press CLEAR on the remote.

The Program Guide disappears and you are returned to regular program viewing. If you have selected a pay-per-view program, a display screen allows you to purchase the selected program.



## What's a Menu?

The **DSS®** menu is a list of choices, just like a menu in a restaurant. And, just as a restaurant menu is divided into sections such as appetizers, entrees, and desserts, the on-screen menus are also separated into sections to help you find the information you need.

## Your On-Screen Living Room

The first menu in this **DSS®** system looks like a living room. You might consider this your “home base” for customizing your **DSS®** system because you use the **Living Room Main Menu** to get to other parts of the system, such as the **User Profiles** menu or the **Assistance** menu.

## Don't Forget Point and Select

As with all of the on-screen displays, you use **Point** and **Select** to navigate.

# The Menu System

1 First Things First



2 Point and select



3 The Program Guide



4 The Menu System



5 Profiles

Use the **MENU•SELECT** button to bring up the **Living Room** main menu, and then use **Point** and **Select** to choose a menu option.

# The Menu System

## Using the Menu System

To bring up the Main Menu, press MENU•SELECT on the remote.



*The Living Room Main Menu.*

To use the menu system, you need to know the Point and Select rule. Use the arrows on the remote to point to an item on the screen, and then press MENU•SELECT to select it.

## Exit and Help

There are Exit and Help buttons at the top of most screens. Point to *Exit* and press MENU•SELECT to leave that screen. Point to *Help* and press MENU•SELECT to see more information about that screen.

### Exiting a Screen

There are two ways to exit a menu:

- Point to *Exit* and press MENU•SELECT.
- Press the CLEAR button on the remote control. The on-screen displays clear from the screen and you return to TV viewing.

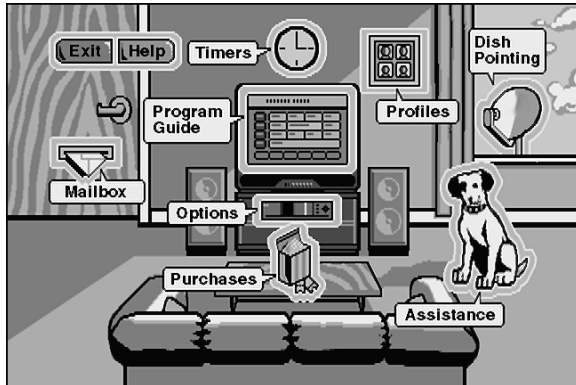
### Using Help

All menus have a Help button. For example, selecting the Help button from the Main Menu brings up all of the help balloons for the Living Room.

1. Press MENU•SELECT to bring up the Living Room Main Menu.
2. Point to the *Help* button and press MENU•SELECT.

**If the Main Menu doesn't appear when you press MENU•SELECT, the remote might not be in DSS® mode. Try pressing the DSS button on the remote, and then MENU•SELECT.**

# The Menu System



*The Help balloons show all of the menu choices in the Living Room Main Menu.*

3. Press MENU•SELECT again. The help balloons disappear.

The rest of the Help buttons in the menu system bring up helpful information explaining one aspect of that menu.

## Changing the Main Menu's Appearance

You have the option of using the Living Room Main menu, or a Control Panel Main Menu.



*The Control Panel Main Menu.*

Use the Assistance menu to change the look of the Main menu:

1. Point to *Assistance* and press MENU•SELECT.
2. Point to *Preferences* and press MENU•SELECT.
3. Use the arrow keys to change the Main menu to a Control Panel.

### Don't Forget about the CLEAR button

Press the **CLEAR** button on the remote to remove the on-screen menus and return to normal viewing.

# The Menu System

## Menu Descriptions

This section briefly describes each of the available Main menu options. Detailed information about each menu is included in the sections of the manual which describe each menu.

### Program Guide

Shows the on-screen programming schedules.

### Mailbox

Use to read your mail messages.

### Purchases

Use to review or cancel upcoming purchases, and to review past purchases.

### Timers

Allows you to schedule the DSS® system to tune to a specific channel at a specific time, and to record that channel.

### Profiles

Allows you to adjust user profiles, and to set rating, channel, and spending limits.

### Options

Allows you to run the system test, install a new access card, or set the DSS® system to control your VCR.

### Dish Pointing

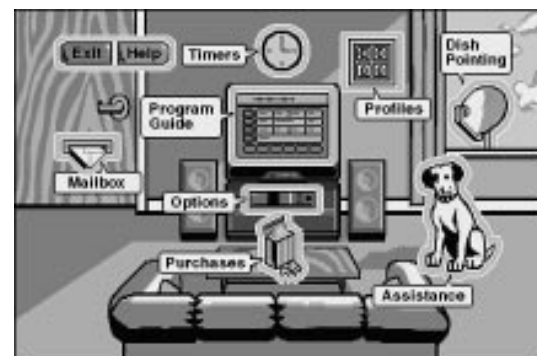
Use to find your dish pointing coordinates, and to access the on-screen signal strength meter.

### Assistance

Shows you information about using the system and setting the system to your personal preferences.

## Explore, Explore, Explore!

Once you've learned the basics, feel free to poke around the menu system because exploring is the best way to learn. The context-sensitive help at the bottom of the screen provides instructions for getting through any particular menu or control panel. Remember, press CLEAR at any time to leave the menu system and return to regular DSS® viewing.



### Context-Sensitive Help

**Most of the screens contain information to help you decide what to do next. If you get stuck, look for the help text.**

## Different Drummers

Not everybody likes to watch the same thing, and within your own family, you might not want everybody to be able to watch everything. The User Profiles feature lets four members of your household customize their DSS® viewing by setting up channel lists and ratings limits which can be password protected.

## Especially for Parents

The Profiles feature contains a “Family” profile that is automatically activated each time the DSS® system is turned on. Setting up the family profile to reflect what you think is the appropriate viewing level for the youngest member of your family can help you to control what they watch.

Also, a password-protected master control lets you lock the system so that no one can change any of the ratings limits, spending limits, or channel lists without first entering a four-digit password.

# Profiles

1 First Things First



2 Point and select



3 The Program Guide



4 The Menu System



5 Profiles

User Profiles puts you in charge of the viewing habits of your family.

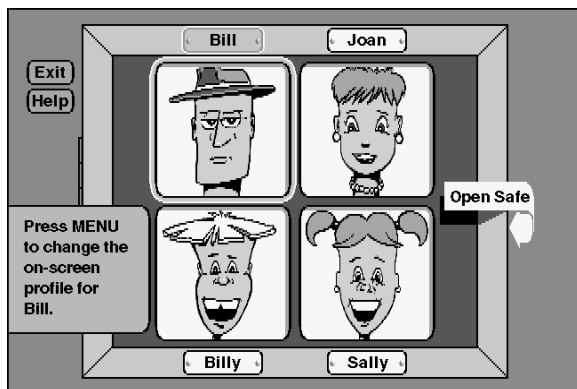
# Profiles

## Personalizing The User Profiles

You can personalize each of the profiles by changing the name, hair style, eyes and nose, mouth, and face color. This makes selecting a profile with the remote much easier because you can quickly identify your own personal profile.

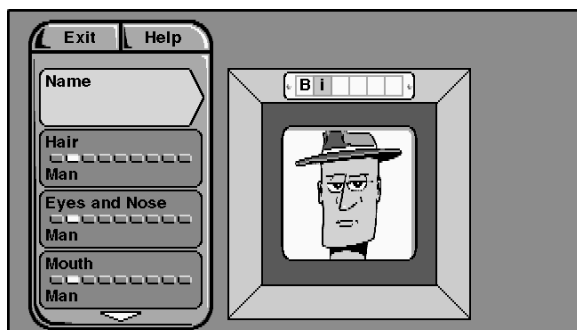
To change the appearance of your User Profile:

1. Point to *Profiles* in the Main menu and press MENU•SELECT.
2. Point to the user you want to change and press MENU•SELECT.



*Select the User you want to change.*

3. Use the arrow keys to make the changes to the user's profile appearance.



*Use the arrow keys to change the user's appearance.*

4. Point to *Exit* and press MENU•SELECT when you're done.



# Profiles

## Creating and Editing a Profile

To access and edit the user profiles, you need to open the safe by pointing to *Open Safe* and then pressing MENU•SELECT.

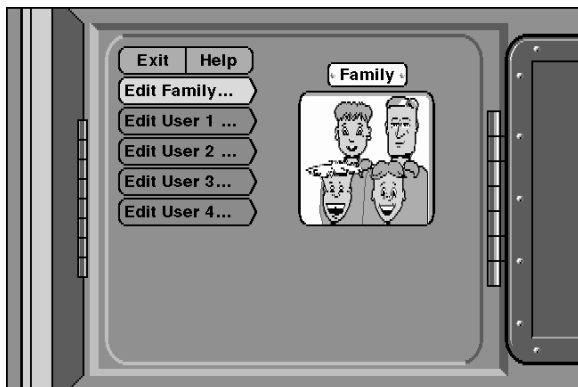
After you open the safe, you have access to all of the user profiles, and can set per-event spending limits and lock the system so that no changes can be made without first entering a four-digit password.



*Open the safe to get to the System Control screen.*

To edit a profile:

1. Point to *Edit Users* and press MENU•SELECT.
2. Point to a user or the family profile and press MENU•SELECT.



*Choose a user profile to edit.*

After you choose a user, you can do the following:

- Edit the user's channel list.
- Adjust the user's ratings limit.
- Set the user's password .

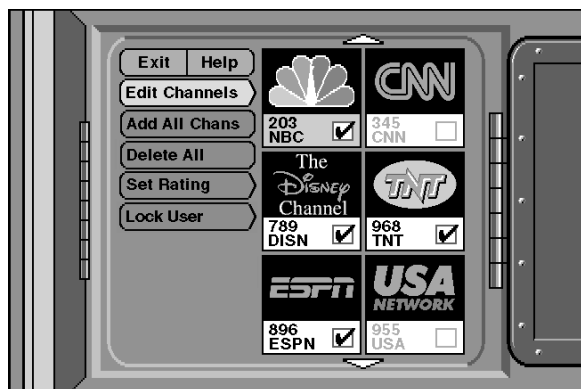
**The family profile does not have a password option because each time you turn on the DSS® receiver, the system defaults to the family profile.**

# Profiles

## Editing the Channel List

The first time that you enter this menu, all of the channels are selected (check marked). To create a customized channel list, you need to scroll through the list and deselect those channels that you do not want to appear in the Program Guide.

1. Point to *Edit Channels* and press MENU•SELECT.



*The Edit User Profile menu begins with the user's current channel list.*

2. Use the arrow keys to point to a channel, and press MENU•SELECT to remove (or replace) the check mark.

## Add or Delete All Channels

You might be able to save time when creating a channel list by using the *Add All Chans* option or the *Delete All* option to either add all channels or delete all channels before removing or adding individual channels.

## Setting the Ratings Limit

The *Set Rating* option enables you to set a maximum viewing limit for rated movies (based on the MPAA ratings system), as long as the program provider has transmitted the proper code.

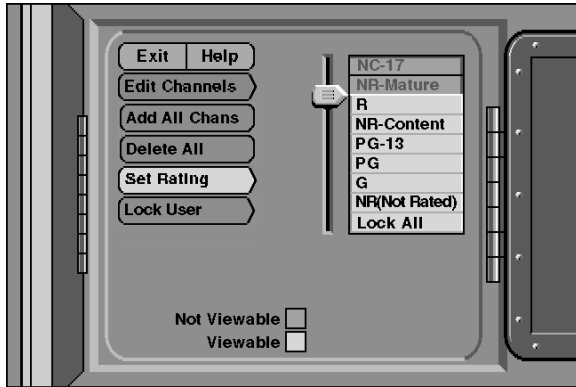
- Note that the ratings limit cannot be enforced if a program has not been rated, if rating information for that program is not transmitted by the program provider, or if the system has not been locked.

**You need to lock the system in order for rating limits and channel lists to go into effect. See “Locking the System” on page 27 for details**

# Profiles

1. Point to *Set Rating* and press MENU•SELECT.

The Rating Limits menu appears.



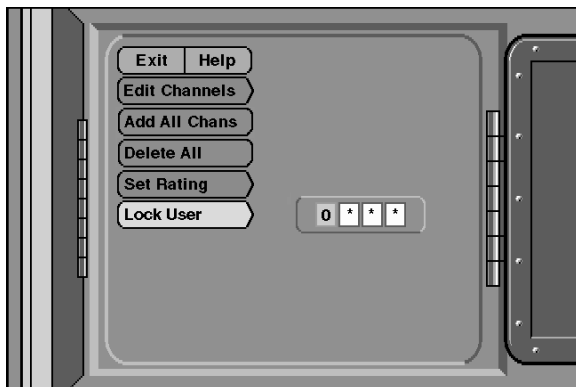
Use the arrow keys to move the selector up and down.

2. Use the up and down arrows (on the remote) to move the rating selector to the highest rating you want the user to view; then press the left arrow.

## Locking a User's Profile

Each user can be assigned a personal password to lock his or her profile. When a password is assigned, the user must enter the password before he or she can view programs using that profile.

1. Point to *Lock User* and press MENU•SELECT.



Setting a User's personal password.

2. Use the arrow or digit keys to select each number of the password.

## Don't Forget Your Password

If you forget your password, you need to unlock the user and then assign a new password.

### Unlocking a User's Profile

If you forget your user password, you might need to unlock the user in order to set a new one.

Go the **Edit User** screen, point to **Unlock User** and press the **MENU•SELECT** button; then you can enter a new password.

# Profiles

## Controlling the System

Use the System Control screen to set up a system-wide, per-event spending limit, and to lock the system in order to put into effect the channel lists and rating limits you set up in your user profiles.



*The System Control screen.*

## Setting Up Spending Limits

Use the *Spending Limit* option to indicate a spending limit for pay-per-view programs.

1. Point to *Spending Limit*, and press MENU • SELECT.



*Set a per-event spending limit.*

2. Use the arrow keys to enter a single-program spending limit.
3. When finished you can lock the system, edit a user profile, exit to the preceding screen, or press CLEAR to go back to normal viewing.

# Profiles

## Locking the System

Locking the system lets you manage your family's access to DSS® programming. The User Profile settings for channel lists, ratings limits, or spending limits go into effect when you lock the system.

1. Point to *Lock Limits* and press MENU•SELECT.



*Enter a four-digit system password to lock the system.*

2. Use the arrows or the digit keys to enter a four-digit system password.
3. Enter the password a second time to confirm it.

After the system has been locked, you must enter the correct password in order to access System Control screen, so **Don't Forget Your Password!** If you do forget your password, contact your program provider's authorization center.

## Unlocking the System

When the system is unlocked, the spending, rating, and channel limits that you have set are no longer in effect.

1. Point to *Unlock Limits* and press MENU•SELECT.
2. Point to *Yes* and press MENU•SELECT to confirm that you want to unlock the system.

### Forget Your System Password?

You need to contact your program provider's authorization center to reset your system if you forget your system password.

# Profiles

## Session Unlock

If your system is locked and you attempt to access a channel or program that is blocked by one or more limits, you are asked to enter the four-digit system password to override the system lock. If you enter the password to override the rating, spending, or channel limit, all limits are unlocked until you turn off the receiver. When you turn on the receiver again, the system will be locked, and in family mode.

## Choosing Your Profile to Watch DSS® Programming

Each time that you turn on the DSS® receiver, the Family profile is selected by default.

1. Press the FAV•INPUT button on the remote to scroll through the profiles.



*The FAV•INPUT button on the remote brings up the User Profiles.*

2. When your profile appears, enter your four-digit personal password to activate your profile.
  - If the profile is not password protected, you can just press MENU•SELECT to activate it.

Now, the ratings and channel limits will reflect the chosen profile.

# More Features

## What? There's More?

If you've read this far, then you've seen how to use the on-screen program guides, how to get around in the menu system, and how to edit and use the Profiles feature. This section highlights the rest of the features offered by your DSS® system.

Don't be afraid to use Point and Select to explore all of the features on your own.

# More Features

## Pay-Per-View Programs

Pay-per-view programs (PPV) are programs that you purchase—like a movie ticket—on an event-by-event basis. For instance, there might be a specific channel that runs nothing but previews for movies. After previewing the movie, you can purchase it or find out more details about it. PPV programs can also be found in the Program Guide.

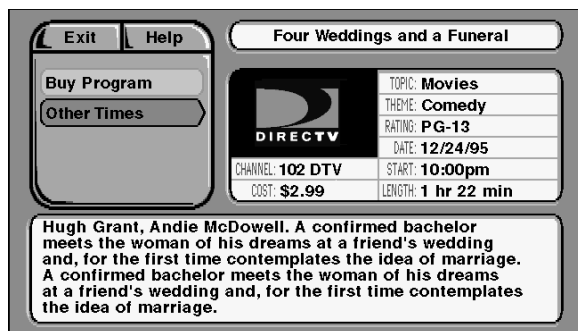
## Purchasing and Viewing

There are several ways to purchase PPV movies and events:

- Tune to a PPV program while using the channel buttons on the remote to scan through the channel lists.
- Select a PPV program from the Program Guide.
- Select a coming attraction from the Attractions menu.

## Tuning to a PPV Program

When you use the channel buttons or digits on the remote to tune to a Pay-Per-View channel, you need to press the DISPLAY button to bring up the Program Details screen in order to purchase a program.



*Program Details screen.*

Follow the on-screen instructions to purchase the selected program.

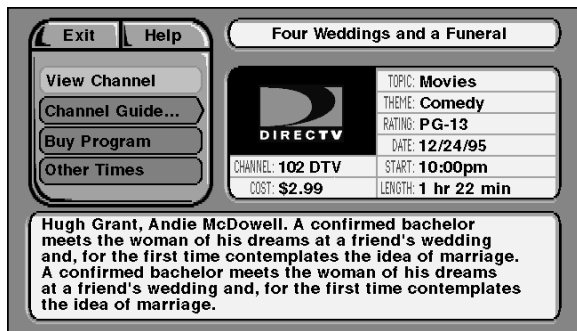
**You may need to enter your four-digit system password to order a PPV program if it costs more than the spending limit you set up in the Profiles menu.**



# More Features

## Using the Program Guide for PPV Programs

When you use the Program Guide, to select a PPV program, press the DISPLAY to see a different Program Details screen.



*Use the Program Guide to get to the Program Details screen.*

Select *View Channel* to see go to that channel and view a program preview (if a preview is available).

Select *Channel Guide* to go to the channel guide.

Select *Buy Program* to purchase the program.

Select *Other Times* to see additional show times.

## Using the Attractions Guide

Your program providers may offer future programming events not currently listed in your Program Guide. These events are called “coming attractions,” and can be previewed and purchased through the Attractions Guide.

Use Point and Select to go to the *Attractions Guide* (located within the Program Guide menu).



*The Attractions Guide is accessed through the Program Guide menu.*

### Buy and Record Option

**Your program provider may offer PPV programs that are coded so that you cannot record them. When these programs are offered, an additional option (*Buy and Record*) appears in the program details screen. Selecting *Buy and Record* allows you to record the program; selecting *Buy Program* allows you only to watch the program.**

**You need to connect your phone line to your satellite receiver to be able to order PPV programs by using the on-screen menus.**

# More Features

## Using the Purchases Menu

The Purchases menu allows you to review upcoming and past purchases.



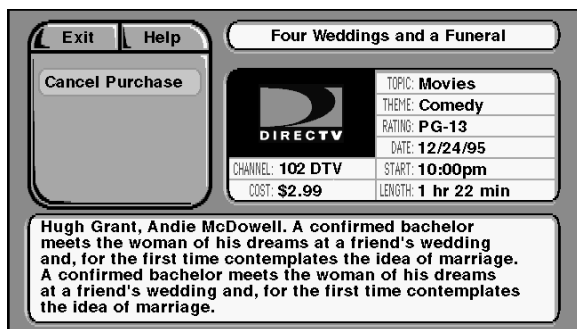
*The Purchases menu shows you upcoming or past purchases.*

The list of purchases may be longer than one screen; use the down arrow keys to see more items. The display also shows the title, channel, date, time, and cost of each program.

- Note that the Past Purchases list might be modified after each billing cycle and still show purchases for which you have already paid.

## Reviewing and Canceling an Upcoming Purchase

Use Point and Select to choose an upcoming purchase and review the program description. From the Purchase Edit screen, you can also cancel an upcoming purchase.



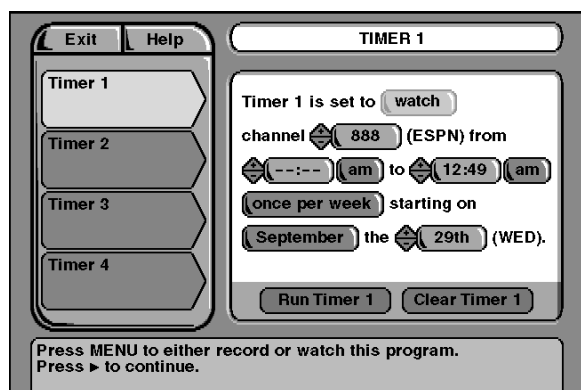
*The Purchase Edit screen lets you cancel an upcoming purchase.*

# More Features

## Timer Feature

The Timer feature allows you to preset your system to automatically tune to a particular channel at a predetermined time, and even to record that channel.

To use the Timer feature, select *Timers* from the main menu to bring up the Timers screen. Select a Timer (1, 2, 3, or 4) and then use the arrow keys to complete the on-screen sentence. When the sentence is complete, select *Run Timer*.



*Complete the sentence to set up the timer for each of the four available Timer options.*

## Setting Up Timer Recordings

The Timer feature allows you to set up timer recordings when you connect the VCR controller to your DSS® receiver, and tell the receiver what type of VCR you are using.

### Connecting the VCR Controller

In order for the receiver and VCR to communicate, you need to attach the VCR Controller to the back of the DSS® receiver.

1. Plug the VCR controller into the VCR CONTROL jack on the back of the DSS® receiver.
2. Affix the other end to the remote sensor on your VCR.

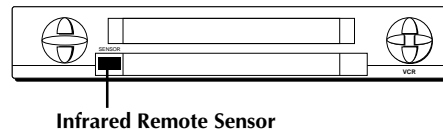


*Connect the VCR controller to the infrared remote sensor on your VCR.*

### Locating the Infrared Remote Control Sensor on Your VCR

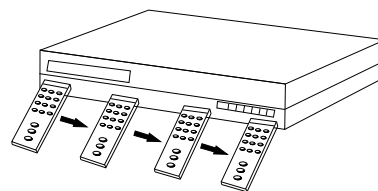
**The VCR controller must be affixed directly over the infrared remote sensor on your VCR.**

**Some VCRs label the infrared remote sensor, and others do not. If your VCR is labeled, affix the VCR controller directly over the sensor.**



**For VCRs that do not label the remote sensor, you need to use the VCR's remote to locate the sensor before affixing the VCR controller.**

1. **Hold the remote control so that it is touching the front of the VCR.**
2. **Slowly move the remote over the front of the VCR while pressing the remote power button on and off.**
3. **When your VCR turns off or on, you have located the sensor.**

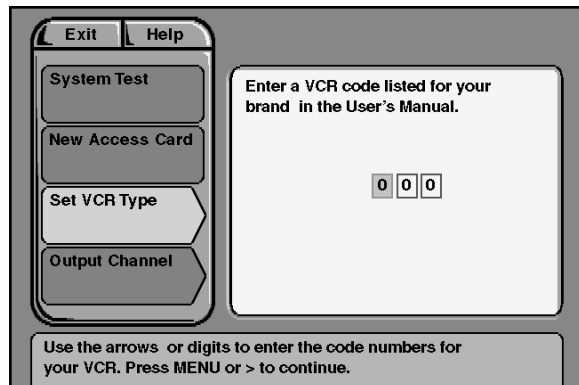


**To test the VCR controller, use a piece of clear tape to temporarily attach the VCR controller to the spot where you think the sensor is located, and then follow the steps described under "Selecting a VCR Type."**

# More Features

## Selecting a VCR Type

You need to tell the DSS® receiver which VCR brand you are using by selecting *Set VCR Type* from the *Options* menu.



The *Set VCR Type* screen is located in the *Options* menu.

1. Use the arrows or digit keys to input the correct code for your VCR brand. The VCR codes are located on page 67.
2. Follow the on-screen instructions to make sure that you are using the correct code. If the VCR automatically stops tape play, then you know that the receiver and the VCR are communicating. If not, keep trying the other VCR code numbers for your brand.
  - Some VCR brands may not be capable of being controlled by the receiver.

## Recording with Timer

If you choose *Record* instead of *Watch* when setting the Timer (and have set up your VCR as previously discussed), the Timer will turn on your VCR, then start and stop recording at the indicated times.

Your VCR **MUST** be

- Preset to the DSS® output channel (RF or Line).
- OFF at the time that the program is to start recording.

## Editing or Canceling a Timer

From the Timers screen, select the Timer you want to edit or cancel, and then do the following:

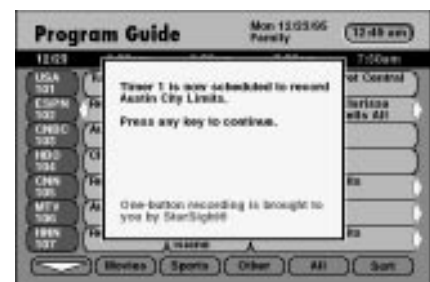
- Use the arrows keys to edit the Timer, then select Run Timer.
- Select Clear Timer to cancel the timer.

### When Recording a PPV Program

**Don't forget to purchase the program as well as set up the timer.**

### Editing One-Button Recording Settings

**A confirmation screen appears when you use one-button recording indicating to which Timer the program information is stored.**



**When you use one-button recording, only the individual program that you select will be recorded. If you want to record the program on a daily or weekly basis, go to the Timers menu and edit that program's timer.**

# More Features

## One-Button Recording with Timer

Press the REC (record) button on the remote while you have a program selected in the guide to set up a timer program. The program information (channel, time, etc.) is stored in the first available timer.

## Using Fetch

Press the FETCH button on the remote to bring up your current channel list. Then Point and Select a channel from the fetch list.



*The Fetch menu gives you a logo-based channel list.*

## The Mail box

The mailbox shows you messages that are sent—or “mailed”—from your program providers. For example, you may receive a message calling your attention to a new service.

### How to tell when you have mail

There are two ways to tell if you have mail, depending on whether the DSS® receiver is turned on or off.

- If the DSS® receiver is turned on, a mail icon appears in the upper right corner of the channel marker.
- If the DSS® receiver is turned off, the power light on the front panel of the receiver flashes.

### Checking your mail

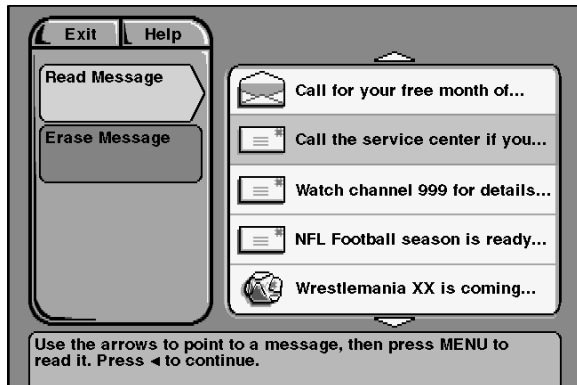
Select Mailbox on the Main menu to view your mail.

1. Point to a message and press MENU•SELECT. The message is opened for you to read.

**Is your ON/OFF Light Flashing?**

**Don't worry, your receiver's not broken. It means that you have mail.**

# More Features



*The Mail menu.*

2. Press MENU•SELECT again to close the letter.

After you read a message and want to erase it, point to Erase and press MENU•SELECT. When you exit the display screen, messages not erased are saved in memory.

## Mail box Size

The mailbox has enough memory to store as many as ten (10) 200-character messages. You should periodically review and erase your mail messages to prevent any mail messages from being erased by the system when memory runs low.

## Alternate Audio Programs

Alternate Audio allows you to select different audio programs (when available) to be played with the video. For example, audio broadcast in a second language may be available for certain programs.

There are two ways to change the audio:

- Press ALT AUD on the remote.
- Point to Alternate Audio from the Preferences menu and press MENU•SELECT.

### ALT AUD Remote Button

Temporary audio selections are made by pressing ALT AUD on the remote. All the available audio types are selected one after another as you continue pressing the ALT AUD button. Once selected, the chosen audio remains selected until it is changed or until the DSS® receiver is turned off.

# More Features

## Alternate Audio Display Screen

When you select Alternate Audio from the Preferences menu, the Alternate Audio display screen comes up.

Point to the audio program type you want and press MENU•SELECT. A check mark next to the program means you have selected that program. The DSS® system will then automatically set the audio program to the selected audio program type when that type is available.

## Picture Size

The Picture size display screen allows you to choose between a standard TV screen and a Cinema option. A standard TV screen has an aspect ratio of 4:3; the Cinema option has an aspect ratio of 16:9.

## System Test

The System Test display screen is accessed through the Options menu, and allows you to initiate diagnostic procedures on the DSS® system. You should use this feature to get your Access Card number, or when your receiver doesn't seem to be working correctly. There are four separate tests: signal, tuning, phone connection, and access card.

A message screen appears, telling you whether the system passed each test. If your system fails a test, run the system test several times before concluding that there is a problem. Occasional fluctuations in the phone line or satellite signal can give temporary false readings.

## New Access Card Setup

Periodically, your program provider may issue you a replacement access card. The New Access Card Setup display screen allows you to transfer the information from the old card onto the new one.

Follow the display screen prompts to initialize your new card. Once you have transferred the information to the new card, your old card becomes invalid.

Because your specific account information and custom settings are stored in the access card, power failures should have no effect on your DSS® system.

**You should only use the Cinema option if you have a CinemaScreen® TV; using the Cinema option on a standard TV screen could crop the picture.**

# More Features

## Using On-Line Help

On-line Help is available for all of the menus and display screens. The System provides Auto Help, Help buttons, and Menu Help.

### Auto Help

Most menus contain a short description of the menu you are using.

### Help Buttons

Help buttons appear in many display screens. To see information about the display screen you are using, point to the Help button and press MENU•SELECT.

Press MENU•SELECT again to remove the message from the screen.

### Menu Help

Select *About DSS* from the *Assistance* menu to choose from a list of on-line Help topics. Point and select to find out about the specific parts of the DSS® system, then use the right arrow key to continue through each of the Help screens or press MENU•SELECT to return to the Help menu.

**Program Guide** shows a screen-by-screen overview of the Program Guide features.

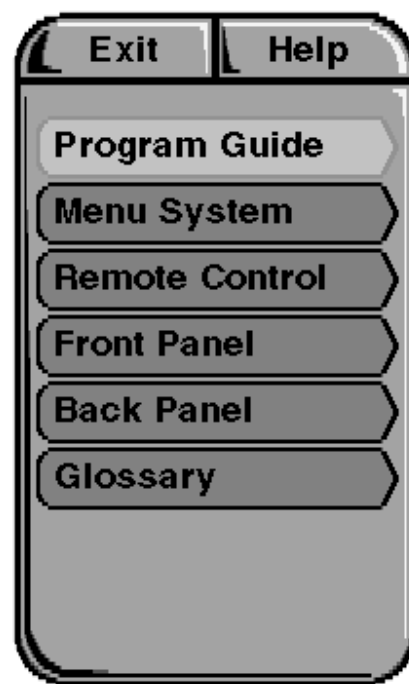
**Menu System** shows a screen-by-screen overview of the DSS® menu system.

**Remote Control** shows an on-screen display of the remote control. Point to the different remote buttons to see a brief description of the highlighted button.

**Front Panel** shows an on-screen display of the DSS® receiver front panel. Point to the different front panel features to see a brief description of the highlighted feature.

**Back Panel** shows an on-screen display of the DSS® receiver back panel. Point to the different back panel features to see a brief description of the highlighted feature.

**Glossary** shows a list of common DSS® and TV terms. Point to a glossary item to see a brief description.



Use the **About DSS** menu (within the **Assistance** menu) to learn more about your system.



# Sending The DSS® Signal To Multiple TVs

## One Receiver: Many TVs

If you have only one DSS® receiver and are using the OUT TO TV jack to send the signal to a TV, you need to know about the agile modulator.

The agile modulator allows you to select the television channel you want to use when you output the DSS® signal from the OUT TO TV jack on the back of the receiver.

## Remote, Remote...

Included with your DSS® system is a remote signal extender which allows you to use the remote to control the DSS® receiver from another room in the house (preferably a room that has a DSS® signal going to the TV).

### Not for the Faint-of-Heart

This stuff may not be brain surgery—but it's close. So if you don't understand everything in this section, you're not alone. In fact, if it weren't for the patience of Keith (our design engineer) I'm not sure that I would even understand it.

# Sending the DSS® Signal to Multiple TVs

## The Agile Modulator

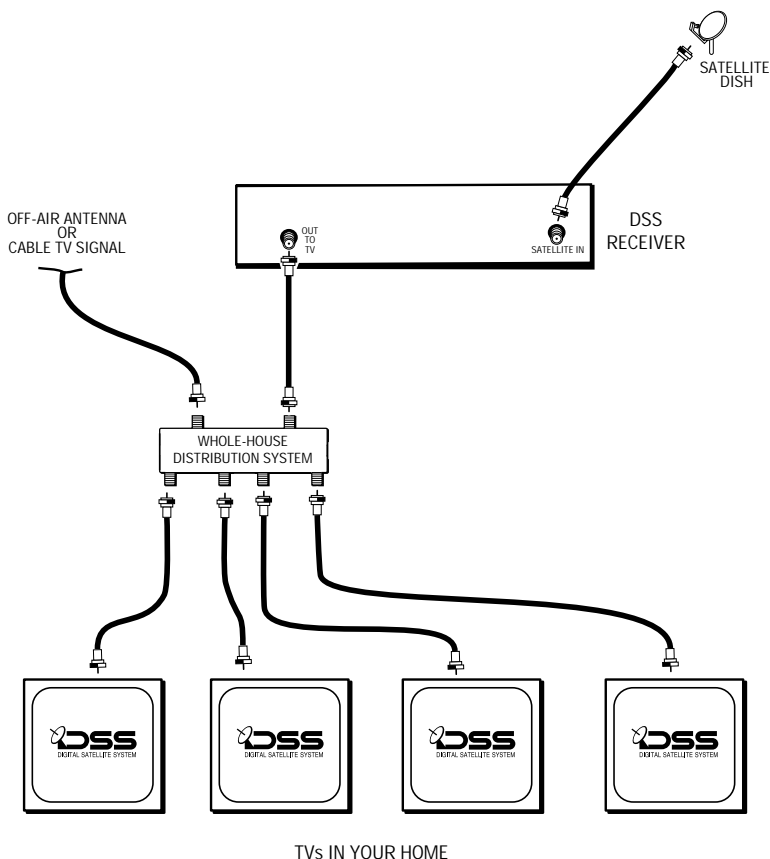
You may have noticed that your DSS® receiver doesn't have a CH3/CH4 switch on the back (like your VCR or Laserdisc player has).

If you noticed this, then you might be wondering how you are going to select an output channel if you run the DSS® signal from the OUT TO TV jack to a television. You use the *Agile Modulator*. The default for the agile modulator is UHF channel 14, or cable channel 65.

## What Does the Agile Modulator Do?

The agile modulator gives you more channels from which to choose an output channel. This should allow you to choose a channel not already being used by an off-air (antenna) broadcast station, or your local cable service.

This is most important when you are using your DSS® receiver in conjunction with a Whole-House Distribution System (WHDS).



The DSS® signal is sent from one receiver to several TVs by using a whole-house distribution system.

### What's a Whole-House Distribution System?

According to Keith, our design engineer, a whole-house distribution system has a couple of "goes-in-tos" and a bunch of "goes-out-tos" and amplifies the signals that go into it before sending those signals out. (Note that the glossary at the end of this manual has an alternative definition—I'm not saying it's better, just different.)

# Sending the DSS® Signal to Multiple TVs

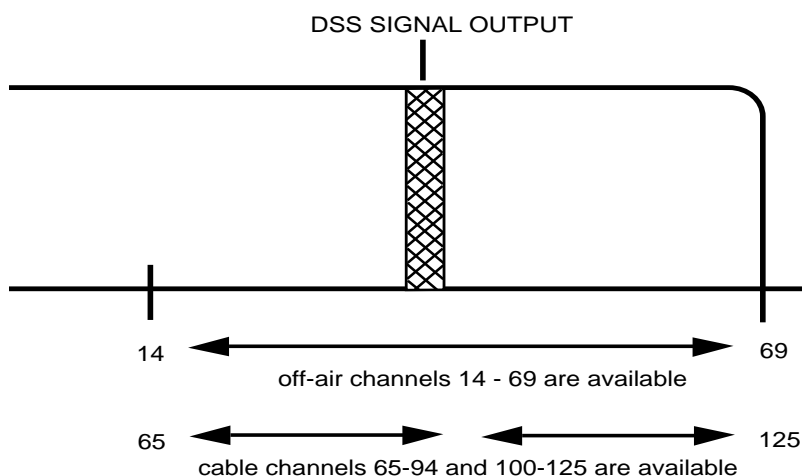
As you see in the preceding diagram, both your cable or off-air signal and the DSS® signal are routed through a whole-house distribution system. Sending the signals through the WHDS lets you watch DSS® programs on one television, and a cable or off-air program on another. The agile modulator lets you avoid a channel conflict by allowing you to select an output channel not already being used by your cable service or off-air broadcasts.

## How Does the Agile Modulator Work?

There is a band of channels that are available to your television. In general, the lower numbered channels are used by your local off-air broadcaster or cable system. The agile modulator lets you choose a channel at the upper end of the band so that you can avoid a conflict and not interfere with a channel already being used.

You can select an off-air channel between UHF channels 14-69; or a cable channel from 65-94 or 100-125 (they use the same channel band). Go through your channels and find one within this range which currently does not have programming.

- If you can find three channels in a row that aren't being used, choose the middle channel.



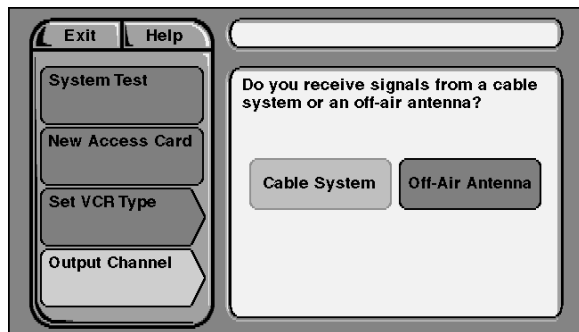
*Locate an open channel on your TV.*

# Sending the DSS® Signal to Multiple TVs

## Selecting an Output Channel

Point and Select *Output Channel* from the Options menu to begin the procedure, and then follow the on-screen displays to select a new output channel.

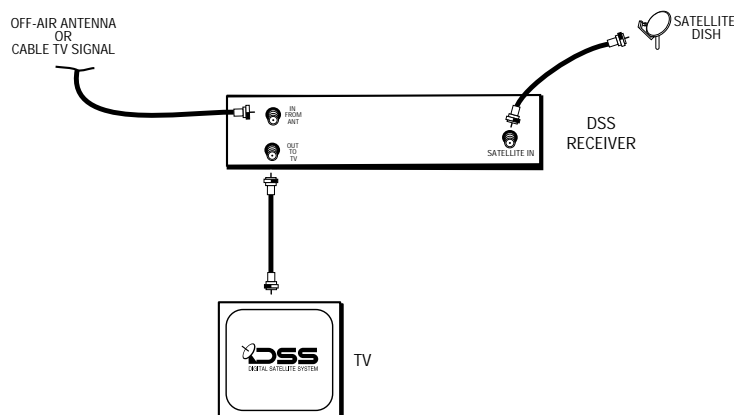
In the first screen, you indicate whether you are getting local channels from cable service or off-air broadcasts, and in the screens that follow, you select an available output channel.



Select *Output Channel* to begin the procedure for changing your output channel.

## Single TV Output

Although the agile modulator is designed for a whole-house distribution system, you may still need to set the output channel even if you are running a signal from the OUT TO TV jack to only one television. The default setting is channel 14 (off-air) and 65 (cable). Try to get a signal on these channels first; then go to Output Channel in the Options menu to change the agile modulator setting.



Output to a single television from the *OUT TO TV* jack.

### Resetting the Agile Modulator

To reset the output channel to the default (UHF channel 14 or cable channel 65), simultaneously press the **DISPLAY** button and the **LEFT ARROW** button (◀) on the front of the receiver.

# Sending the DSS® Signal to Multiple TVs

## Remote Control Signal Extender

If you have one DSS® receiver hooked up to two televisions in different rooms, you need to set up the remote control signal extender in order to change DSS® channels with the remote.

### The Relay Device

The Relay Device takes the signal from your remote and transfers it to the base unit which tells the DSS® receiver what to do.

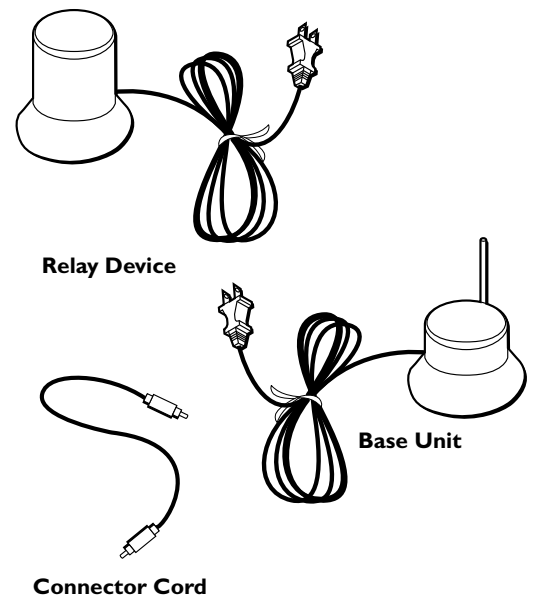
The Relay Device can be placed up to 18 feet away from where you will be using the remote control, and must be within 100 feet of the base unit.

### The Base Unit

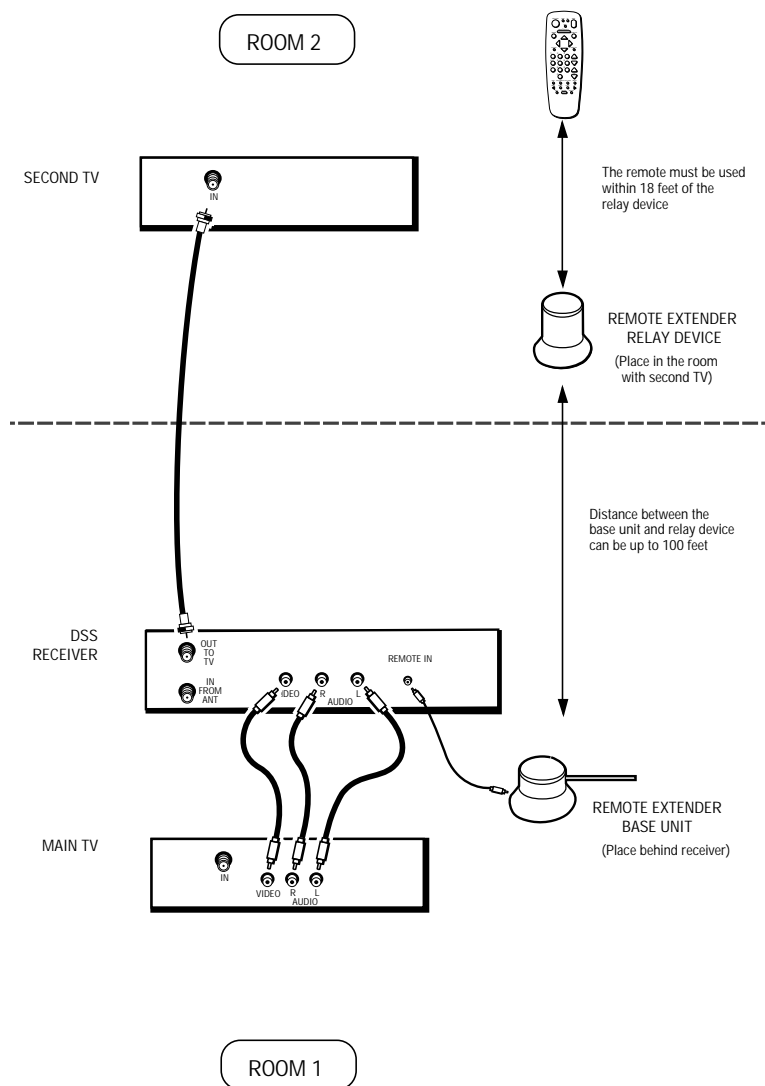
The Base Unit has the antenna, and sits behind or beside your DSS® receiver, and connects directly into the REMOTE IN jack on the back of the receiver. It takes the signal from the Relay device and gives it to the DSS® receiver.

### Hooking It UP

The base unit is designed to be placed behind your DSS® receiver, with the antenna extended out to one side.



# Sending the DSS® Signal to Multiple TVs



Your second TV must be connected to the DSS® receiver.

1. Place the base unit behind the DSS® receiver.
2. Plug the connector cord into the jack on the base unit, and into the REMOTE IN jack on the back of the DSS® receiver.
3. Plug the AC power cord attached to the base unit into an AC power outlet.
4. Place the relay device in the room containing the second television that you want to control, and plug it into an AC power outlet.
  - Make sure it is within 18 feet from where you will be using the remote.

Use the remote to change channels on your DSS® receiver from the room with the second television.

## Things to Know Before Connecting Components

### Protect Your Components from Power Surges

- Connect all components before plugging any power cords into the wall outlet.
- Always turn off the DSS® receiver, TV and other components before you connect or disconnect any cables.

### Position Cables Correctly to Avoid Audio Hum or Interference

- Insert all cable plugs firmly into their jacks.
- Place the audio/video cables to the sides of the TV's back panel instead of straight down the middle after you connect your components.
- Try not to coil any twin-lead cables and keep them away from the audio/video cables as much as possible.
- Make sure all antennas and cables are properly grounded. Refer to the Important Safety Information and the dish installation manual packed with your system.

### Protect Your Components from Overheating

- Do not block ventilation holes in any of the components. Arrange the components so that air can circulate freely.
- Do not stack components.
- Allow adequate ventilation when placing your components in a stand.
- Place an amplifier or DSS® receiver on the top shelf of the stand so heated air rising from it will not flow around other components.

# Connections

## Connecting Your DSS® Receiver to Your TV

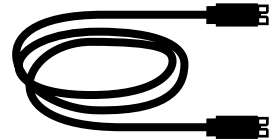
If your DSS® system has not been professionally installed, or if you move your system or add a component, refer to these pages to help you connect your system.

### Jacks and Cables

#### S-Video Jack and Cable (S-VHS)

The S-Video jack provides the best picture quality for your DSS® system.

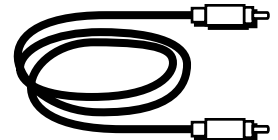
This jack is available on many TVs and is used in conjunction with audio cables to connect the DSS® receiver to your TV. Remember also to connect the left and right audio cables because the S-Video jack carries only the picture signal, not the sound.



#### Audio/Video Jacks and Cables (RCA-type)

The audio/video jacks provide very good picture and stereo sound quality, and should be used if your TV has no S-Video jack.

These jacks are used for most audio/video connections between components. The DSS® receiver audio/video jacks are color coded (yellow for video, red for right audio, and white for left audio). If your TV has only one input for audio (mono), connect it to the right (red) audio jack on the DSS® receiver.



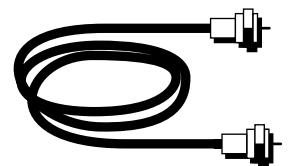
#### RF Jacks and Coaxial Cables (F-type)

The RF jacks provide good picture and mono sound quality, and are to be used if audio/video connections are not available for your TV.

These jacks are required for antenna or cable-TV connections. The RF jacks on the DSS® receiver are labeled IN FROM ANT and OUT TO TV. The coaxial cable supplied with your DSS® system is used to connect the RF jacks between the DSS® receiver and your TV's antenna input.



RF Jack





# Connections

## Choosing a Connection

The following pages show four examples of hookups commonly used to connect the DSS® receiver with a TV and other components. Refer to your TV and VCR Owner's Manuals for more information on hooking up your specific components.

### Connection A

Provides the best possible picture and stereo audio quality.

To use Connection A, you must have:

- TV with S-Video input, plus separate RF and audio/video inputs (jacks).
- VCR with RF and audio/video inputs and outputs
- S-Video, coaxial, and audio/video cables

### Connection B

Provides very good picture and stereo audio quality.

To use Connection B, you must have:

- TV with separate RF and audio/video inputs (jacks)
- VCR with RF and audio/video inputs and outputs
- Coaxial and audio/video cables

### Connection C

Provides good picture and mono audio quality.

To use Connection C, you must have:

- TV with RF input (jack)
- VCR with RF and audio/video inputs
- Coaxial and audio/video cables

### Connection D

Provides good picture and mono audio quality.

To use Connection D, you must have:

- TV with RF input (jack)
- Coaxial cables

# Connections

## Connection A

### Best Picture and Sound Quality

To use this connection you must have:

- TV with separate RF, audio/video, and S-Video inputs (jacks)
- VCR with RF and audio/video inputs
- Coaxial, audio/video, and S-Video cables

#### **To connect TV, VCR and antenna or cable box.**

1. Connect coaxial cables as shown.
2. Connect audio/video cables as shown.
3. Connect S-Video cable as shown.

#### **To receive DSS® programming:**

1. Tune TV to receive the S-Video output from the DSS® receiver.
2. Tune DSS® receiver to desired channel.

#### **To receive off-air programming (no cable box):**

1. Turn off VCR.
2. Turn off DSS® receiver.
3. Tune TV to desired channel.

#### **To receive off-air programming (with cable box):**

1. Turn VCR off.
2. Turn off DSS® receiver.
3. Tune TV to cable box output channel (usually CH2, CH3, or CH4).
4. Tune cable box to desired channel.

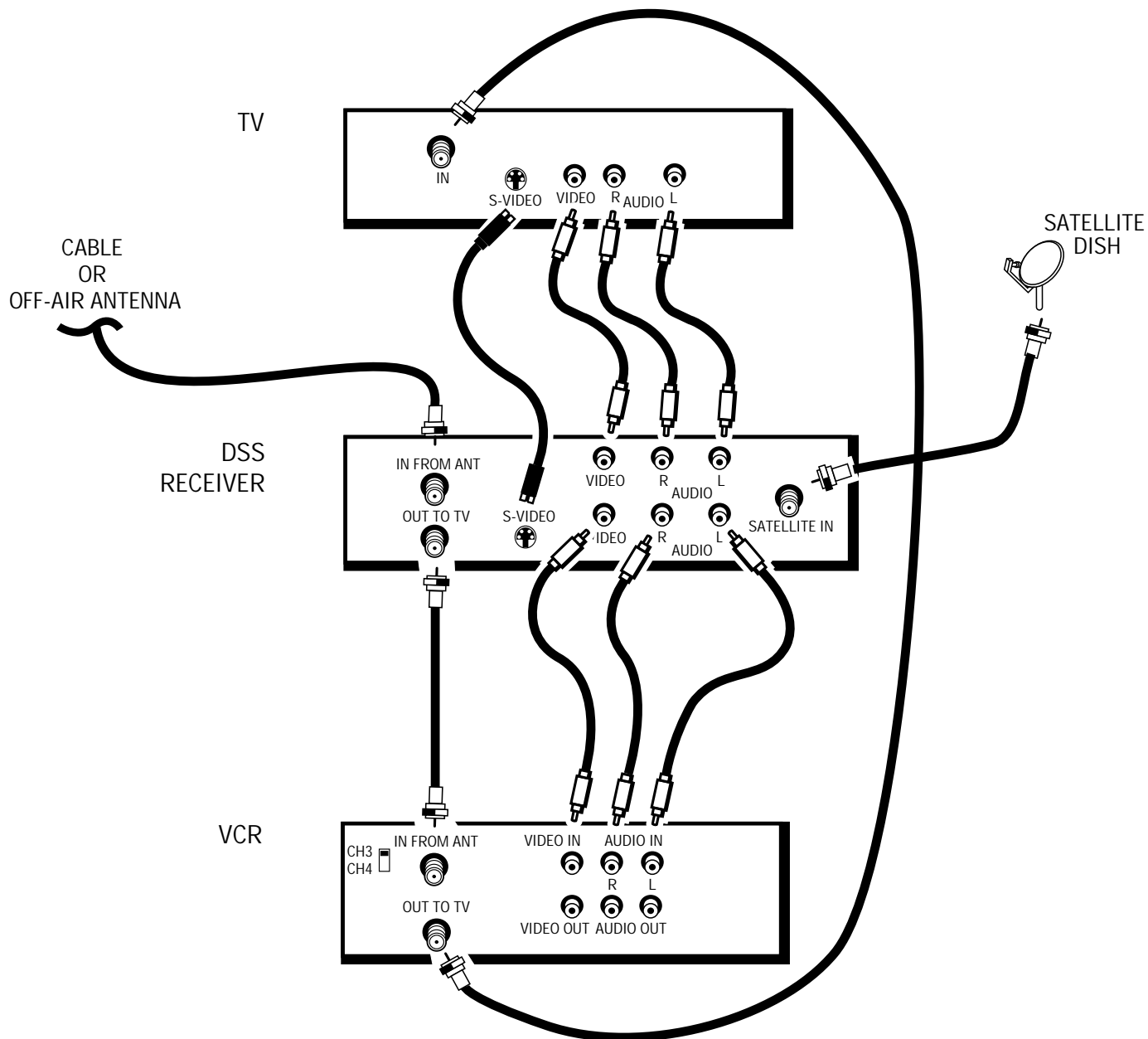
#### **To record DSS® programming:**

1. Tune TV to receive S-Video output from DSS® receiver.
2. Tune DSS® receiver to desired channel.
3. Set your VCR to record on line input.

#### **To view VCR programming:**

1. Tune TV to VCR output channel (usually CH3 or CH4).

# Connections



## CAUTION

Do not stack electronic components or other objects on top of the DSS® receiver. See Safety Information, inside front cover.

# Connections

## Connection B

### Very Good Picture and Sound Quality

To use this connection you must have:

- TV with separate RF and audio/video inputs (jacks)
- VCR with RF and audio/video inputs
- Coaxial and audio/video cables

#### **To connect TV, VCR and antenna or cable box.**

1. Connect coaxial cables as shown.
2. Connect audio/video cables as shown.

#### **To receive DSS® programming:**

1. Tune TV to receive line output from DSS® receiver
2. Tune DSS® receiver to desired channel.

#### **To receive off-air programming (no cable box):**

1. Turn off VCR.
2. Turn off DSS® receiver.
3. Tune TV to desired channel.

#### **To receive off-air programming (with cable box):**

1. Turn off VCR.
2. Turn off DSS® receiver.
3. Tune TV to cable box output channel (usually CH2, CH3, or CH4).
4. Tune cable box to desired channel.

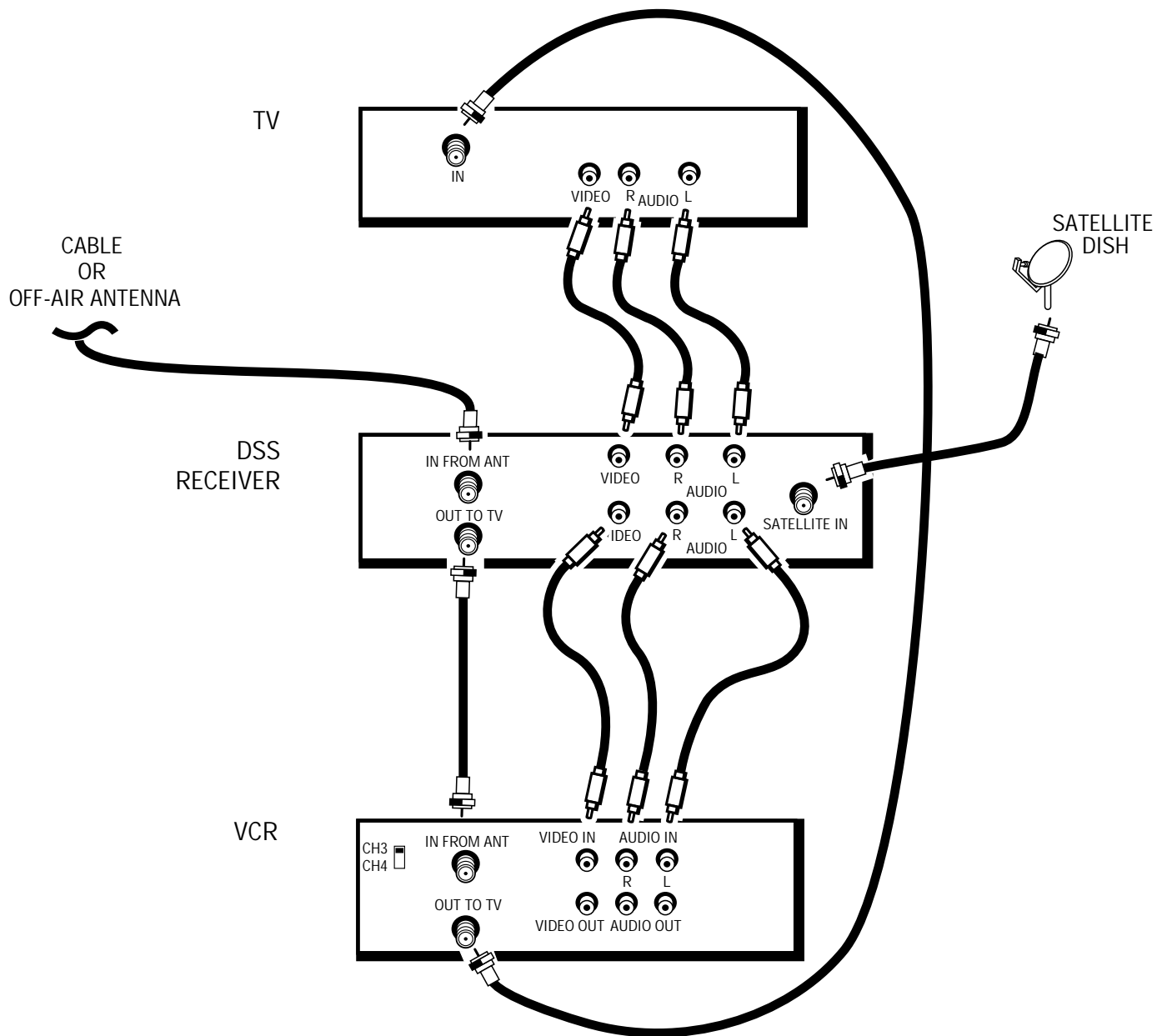
#### **To record DSS® programming:**

1. Tune TV to record line output from DSS® receiver (Input1).
2. Tune DSS® receiver to desired channel.
3. Set your VCR to record on line input channel.

#### **To view VCR programming:**

1. Tune TV to VCR output channel (usually CH3 or CH4).

# Connections



## CAUTION

Do not stack electronic components or other objects on top of the DSS® receiver. See Safety Information, inside front cover.

# Connections

## Connection C

### Good Picture and Sound Quality

To use this connection you must have:

- TV with RF input (jack)
- VCR with RF and audio/video inputs
- Coaxial and audio/video cables

#### **To connect TV, VCR, and antenna or cable box.**

1. Connect coaxial cables and audio/video cables as shown.

#### **To receive DSS® programming:**

- Tune TV to channel 14 if you receive TV signal off-air.
- Tune TV to channel 65 if you receive TV signal from cable.

#### **To receive off-air programming (no cable box):**

1. Turn off DSS® receiver and VCR.
2. Tune TV to desired channel.

#### **To receive cable programming (with cable box):**

1. Turn off DSS® receiver and VCR receiver.
2. Tune TV to cable box output channel (usually CH2, CH3, or CH4).
3. Tune cable box to desired channel.

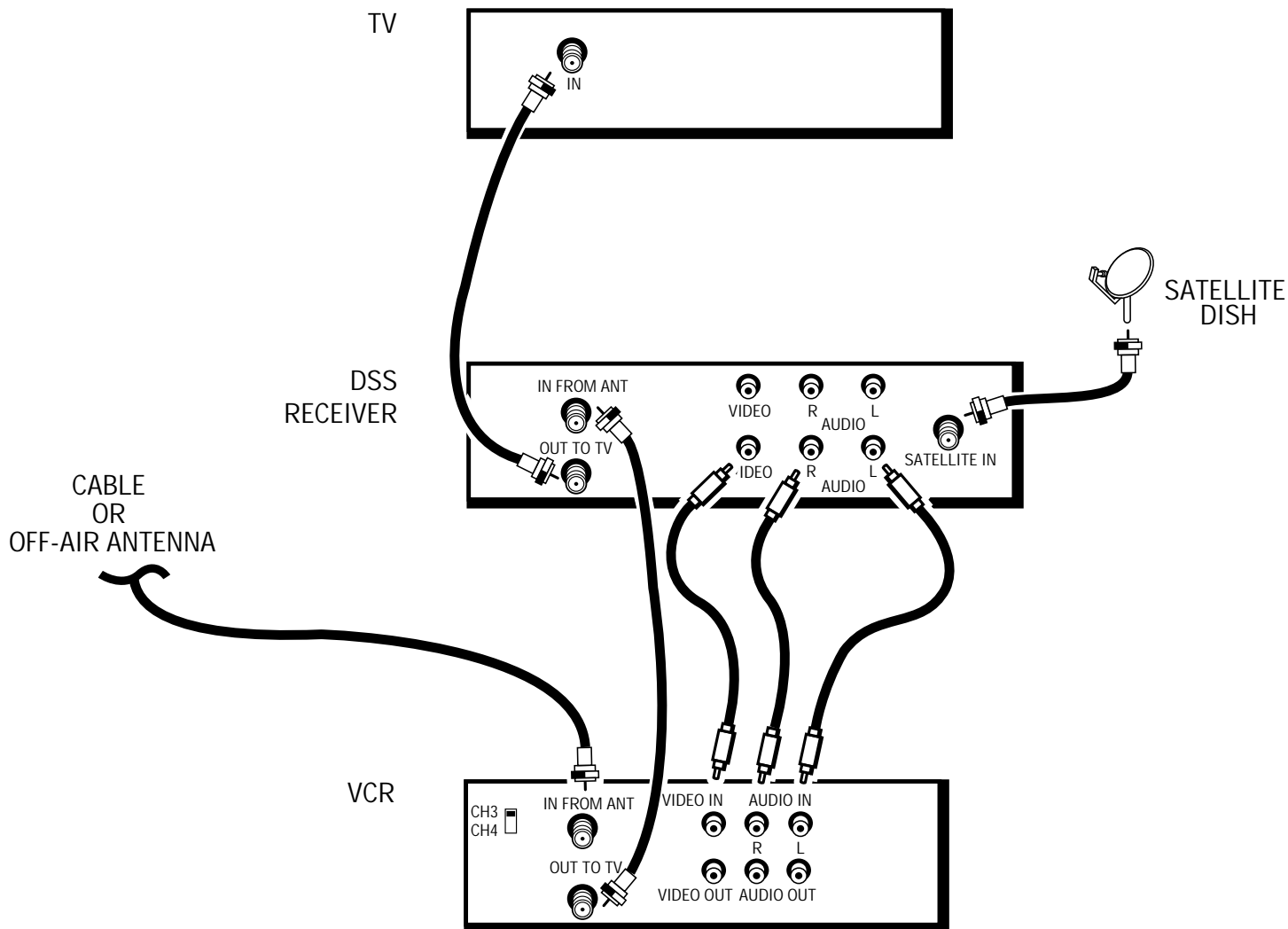
#### **To record DSS® programming:**

1. Tune TV to the VCR output channel.
2. Tune DSS® receiver to desired channel.
3. Set VCR to record on line input.

#### **To view VCR programming:**

1. Tune TV to VCR output channel (usually CH3 or CH4).
2. Turn off DSS® receiver.

# Connections



## CAUTION

Do not stack electronic components or other objects on top of the DSS® receiver. See Safety Information, inside front cover.

# Connections

## Connection D (Good Picture and Sound Quality)

To use this connection you must have:

- TV with RF input
- Coaxial cables

### **To connect TV and antenna or cable box:**

1. Connect coaxial cables as shown.

### **To receive DSS® programming:**

- Tune TV to channel 14 if you receive signal off-air.
- Tune TV to channel 65 if you receive signal from cable.

### **To receive off-air programming (no cable box):**

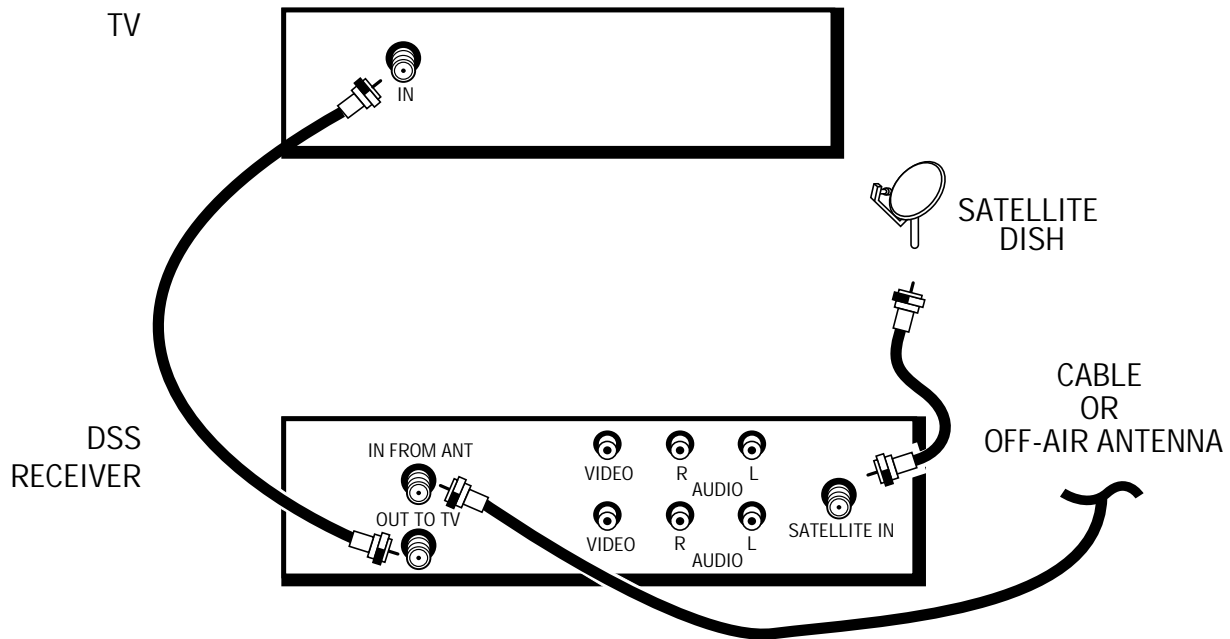
1. Turn off DSS® receiver.
2. Tune TV to desired channel.

### **To receive cable programming (with cable box):**

1. Turn off DSS® receiver.
2. Tune TV to cable box output channel (usually CH2, CH3, or CH4).
3. Tune cable box to desired channel.



# Connections



## CAUTION

Do not stack electronic components or other objects on top of the DSS® receiver. See Safety Information, inside front cover.

# Connections

## Interactive Setup

If you self-installed your satellite dish, you may have already used the interactive setup to find the dish pointing coordinates, acquire and fine-tune the signal, and run a system test.

If you need to run the interactive setup again, go to the *Assistance* menu and select *Setup*.

If you just want to check your dish pointing coordinates, or run the signal strength meter, select *Dish Pointing* from the Main menu.

## Disabling Interactive Setup

The Interactive Setup menus automatically appear on-screen the first time you plug in your receiver, and when power is restored after a power loss.

The final step of the Interactive Setup allows you to disable the automatic appearance of the Interactive Setup.

To enable it again, select *Setup* from the *Assistance* menu and then follow the Interactive Setup routine until the end, where you can choose to enable the automatic feature.

# Reference

## How It All Works

Although the DSS® system is easy to use, there are a number of parts in the system. Don't be overwhelmed. This section explains how these different parts work together to bring a picture to your screen.

## What's It For?

This section also describes the controls located on the front and back of the receiver.

## What Else Can it Do?

Your remote is capable of controlling other devices as well. This section tells you how to program the remote to control TVs, VCRs, Laserdisc players, and other equipment.

The information in this section tells you more about your system, and less about how the system works.

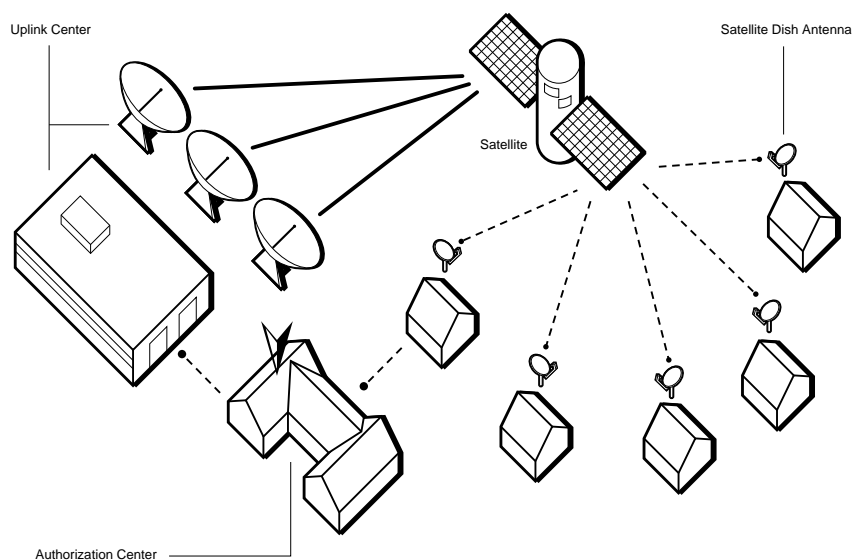
# Reference

## Parts of the DSS® System

One way to understand the DSS® system is to look at the different parts of the system—from the studio down to the DSS® receiver and remote control in your living room.

### World View

These parts make up the DSS® system “big picture.”



**Uplink Center** Transmits programming up to the satellite.

**Satellite** Relays the programming signals back to your satellite dish. The satellite is parked above the equator, in geostationary orbit 22,300 miles above the earth.

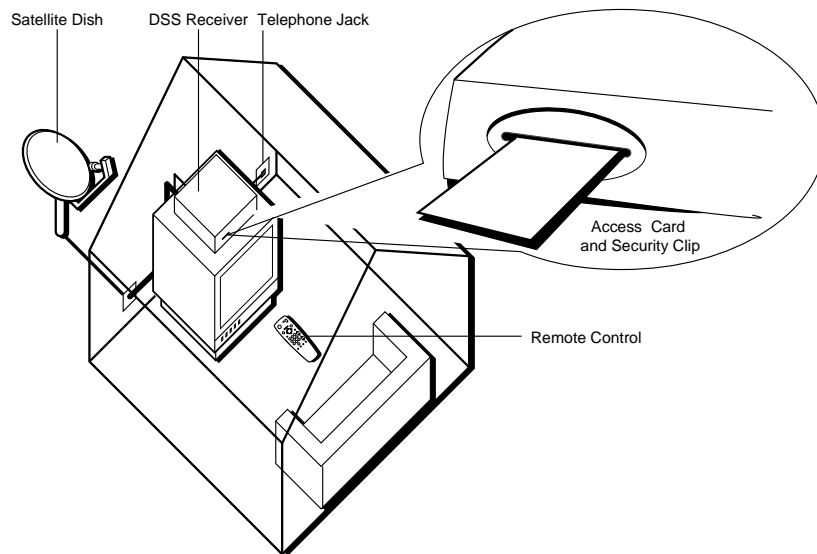
**DSS® Satellite Dish Antenna** Receives the satellite signals. Because the satellite is so powerful, the dish can be as small as 18 inches.

**Program Provider Authorization Center** Processes billing statements. Your DSS® system is linked to the service Center through the phone jack on the back of your DSS® receiver.

# Reference

## Home View

These parts are inside of or attached to your house.



**DSS® Satellite Dish** Picks up the satellite's coded program information and relays it to your DSS® receiver. (Your satellite dish may be installed in different locations on or around your house. The satellite dish must, however, be pointed in a southern direction toward the satellite.)

**DSS® Receiver** Receives the TV program information and sends it to your TV or VCR.

**Telephone Jack** Connects to the phone jack on the back of the DSS® receiver. The DSS® receiver uses a toll-free number once a month to update your access card. This update only takes a few seconds and ensures that you will have continuous service. The system automatically hangs up if you pick up the phone when the DSS® receiver is calling out.

**Television** If your television is remote controllable, you can program the DSS® Universal TV Remote to change channels and volume.

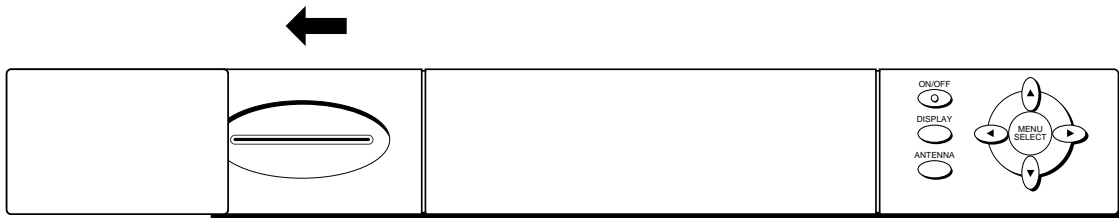
**DSS® TV Universal Remote (included with your DSS® system)** Controls the DSS® system as well as most remote controllable TVs, VCRs, and other devices. Point the remote at the device you want to control.

**Access Card (installed in DSS® receiver)** Must be inserted for you to use the DSS® system! Provides system security and authorization of DSS® services. Do not remove the card except when issued a new card as a replacement for the original.

# Reference

## Controls and Buttons

This part of the Reference sections discusses the controls and buttons located on the receiver and the remote control.



*The Access Card door slides open so that you can replace the card when necessary.*

## Front Panel Controls

**ON/OFF** Turns the DSS® receiver's power on or off.

**DISPLAY** Brings up the on-screen channel marker.

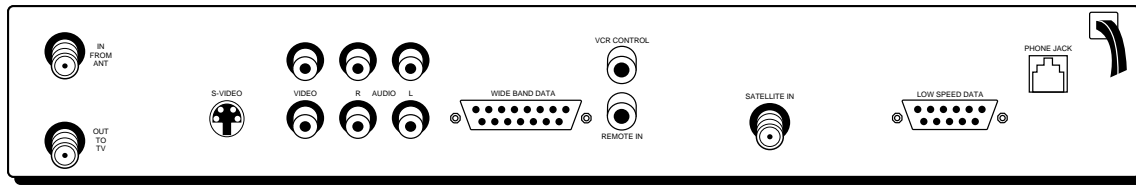
**ANTENNA** Switches the source of the video signal from DSS® satellite signals to an off-air antenna or cable signal.

**ARROWS** Press the navigation arrows to move the on-screen highlight up, down, left, or right. Using the arrows to highlight a menu item is also called "pointing."

**MENU•SELECT** Brings up the Main menu. If you are already in the menu system, press MENU•SELECT to select a highlighted choice.

**ACCESS CARD** Identifies you to your program providers. The DSS® system requires a valid access card.

# Reference



## Back Panel Controls

**IN FROM ANT** Use to connect an off-air antenna or cable TV signal to the DSS® system.

**OUT TO TV** Use to connect the DSS® receiver to your TV. However, if your TV has audio/video jacks, you should use those jacks to get better picture and sound quality.

**S-VIDEO** Provides the best picture quality. If your TV has S-VIDEO capability, use this jack along with the audio/video jacks to connect the DSS® receiver to your TV.

**VIDEO** Provides better picture quality than the OUT TO TV jack. If your TV has audio/video capability, use this jack to connect the DSS® receiver to your TV. You must also connect the AUDIO jacks.

**AUDIO (R AND L)** Provide better sound quality than the OUT TO TV jack. If your TV has audio/video capability, use these jacks to connect the DSS® receiver to your TV. You must also connect the VIDEO jack.

**WIDE BAND AND LOW SPEED DATA PORTS** These ports allow you to connect the DSS® system to future services and accessories as they become available. A shielded cable and additional hardware may be required.

**SATELLITE IN** Use to connect the DSS® receiver to the satellite dish.

**PHONE JACK** Use to connect a phone line to the DSS® receiver. The DSS® system requires a phone line connection to periodically call out to program providers.

**VCR CONTROL** Allows the receiver and VCR to communicate with each other.

**REMOTE IN** Use in conjunction with the Remote Control Signal Extender.

# Reference

## Remote Control Buttons

**OFF•ON** Turns the device you are controlling on or off.

**TV** Tells the remote to control the TV.

**VCR** Tells the remote to control the VCR.

**ALT** Tells the remote to control an alternative device connected to your TV.

**DSS®** Turns on the DSS® receiver and tells the remote to control DSS® system functions.

**DISPLAY** Brings up the on-screen channel marker.

**MENU•SELECT** Brings up the Main menu. If you are already in the menu system, press MENU•SELECT to select a highlighted choice.

**ARROWS** Use the navigation arrows to move the on-screen highlight up, down, left, or right. Using the arrows to highlight a menu item is also called “pointing.”

**GUIDE** Brings up the on-screen program guide. Press the GUIDE button several times to toggle through the different types of guides.

**PREV CH** Moves you back and forth between your last two selected channels.

**CLEAR** Removes the on screen displays and return to normal viewing.

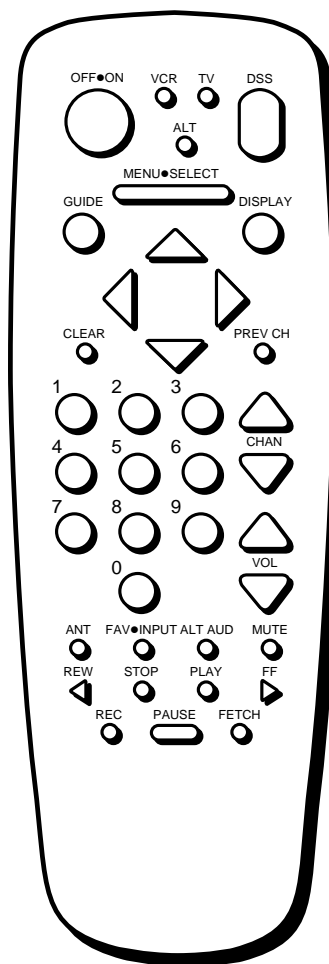
**DIGIT KEYS (0 - 9)** Use the digit keys to tune directly to a channel. If you are in the menu system, use the digit keys to enter numbers for the time, date, channel and passwords.

**CHAN UP/DOWN** Use to scan up and down through the channels in the current channel list. If you are in the program guide or menu system, use the CHAN UP/DOWN buttons to page up and down a screen at a time.

**VOL UP/DOWN** Adjusts the audio volume.

**MUTE** Turns off the sound. Press again to restore the sound.

**ALT AUD (Alternate Audio)** Use to toggle through the available languages or audio types for a program.





# Reference

**FAV•INPUT** In TV mode, press the FAV•INPUT button one or more times to toggle through the available video inputs connected to the TV. In DSS® mode, press the FAV•INPUT button one or more times to toggle through your user profiles and channel lists.

**TRANSPORT Buttons (REW, STOP, PLAY, FF, PAUSE, REC)** Use when controlling an auxiliary device, such as a VCR or Laserdisc player. Note that the REC (record) button is used for one-button recording when using a program guide.

**FETCH** Brings up the on-screen logos that correspond to your current channel list. Use the arrows to point to a logo and tune to that channel.

**ANT** Lets you switch the source of the video signal from DSS® satellite signals to an off-air antenna or cable signal.

## Programming the Remote Control

The DSS® remote can be programmed to control most brands of remote controllable TVs, VCRs, and cable boxes. Most RCA, GE and ProScan TVs and VCRs are already programmed. Other manufacturer's brands need to be programmed.

### Programming the Remote to Control Your TV

To determine whether your remote needs to be programmed, turn the TV on, point the remote at the TV, and press the TV button. Then press CHAN UP or DOWN to see whether the TV responds to the remote commands.

Follow these steps to program your remote to control your TV.

1. Turn on the TV.
2. Look up your brand and code number(s) on the TV Code list on page 66.
3. Press and hold the TV button.
4. Enter the three-digit code from the code list.
5. Release the TV button and press OFF•ON or CHAN UP/DOWN to see if the TV responds to the remote commands. If it doesn't, try the next code listed for your brand.
6. Repeat these steps until the TV responds to the remote commands.

**This remote may not operate all models of the brands that are shown. Use the codes shown in this manual, or on the sheet packed with your remote.**

**After you program the remote to control your TV, record your TV code here for easy reference.**

000

# Reference

## Programming the Remote to Control Your VCR

To determine whether your remote needs to be programmed, turn the VCR on, point the remote at the VCR, and press the VCR button. Then press ON•OFF or CHAN UP or DOWN to see if the VCR responds to the remote commands.

Follow these steps to program your remote to control your VCR:

1. Turn on the VCR.
2. Look up your VCR brand and its code number on the code list on page 67.
3. Press and hold the VCR button.
4. Enter the three-digit code from the code list.
5. Release the device button and press ON•OFF or CHAN UP/DOWN to see if the VCR responds to the remote commands.
6. Repeat these steps using the next code listed for your brand until the VCR responds to the remote commands.

**This remote may not operate all models of the brands that are shown. Use the codes shown in this manual, or on the sheet packed with your remote.**

**After you program the remote to control your VCR, record your VCR code here for easy reference.**



## Programming the remote to control other devices

The ALT button is a fourth device button that can be programmed to control a second VCR, a cable box, or a laserdisc player.

### Programming the Remote to Control a Second VCR

1. Turn on the VCR to be programmed.
2. Look up your brand and its code number on code list on page 67.
3. Press and hold the ALT button.
4. Press and release the VCR button.
5. Enter the three-digit code from the code list.
6. Release the ALT button and press ON•OFF or CHAN UP/DOWN to see if the VCR responds to the remote commands.
7. Repeat these steps using the next code listed for your brand until the VCR responds to the remote commands.

**This remote may not operate all models of the brands that are shown. Use the codes shown in this manual, or on the sheet packed with your remote.**

**After you program the remote to control a fourth device, record your ALT code here for easy reference.**



# Reference

## **Programming the Remote to Control a Cable Box**

1. Turn on the cable box.
2. Look up your brand and its code number(s) in code list (p. 67).
3. Press and hold the ALT button.
4. Press and release the DSS® button.
5. Enter the three-digit code from the code list.
6. Release the ALT button and press ON•OFF or CHAN UP or DOWN to see if the cable box responds to the remote commands.
7. Repeat these steps using the next code listed for your brand until the cable box responds to the remote commands.

## **Programming the remote to control a laserdisc player**

1. Turn on the laserdisc player.
2. Look up your brand and its code number(s) on code list (p. 66).
3. Press and hold the ALT button.
4. Press and release the VCR button.
5. Enter the three-digit code from the code list.
6. Release the ALT button and press ON•OFF or another button to see if the laserdisc player responds to the remote commands.
7. Repeat these steps using the next code listed for your brand, until the laserdisc player responds to the remote commands.

## **Using the Remote Buttons to Control a Device**

Once the remote has been programmed with the correct codes, you are ready to use it to control your devices.

To operate the device:

1. Press the device button (TV, DSS®, VCR, or ALT) to set the remote to control the device.
2. Press OFF•ON to turn the device off or on.
3. Use the remote buttons that apply to that device.

# Reference

## Remote Codes

### TV Codes

Akai ..... 002	Kloss Novabeam ..... 035, 043	Realistic ..... 021
Anam National ..... 038	KTV ..... 078	Sampo ..... 011, 027
AOC ..... 011, 019, 027, 088	Loewe ..... 013	Samsung ..... 006, 011, 014, 015, 019, ..... 027, 036, 037, 077
Candle ..... 011, 027, 033	Luxman ..... 011, 027	Sanyo ..... 017, 021, 039, 056, 057, 058
Citizen ..... 011, 027, 033, 064	LXI ..... 013, 018, 021, 023, 054	Scott ..... 028, 037, 064
Colortyme ..... 011, 027, 084	Magnavox ..... 006, 007, 010, ..... 011, 013, 016, 027, 033, 035, ..... 043, 049, 066, 087, 089	Sears ..... 000, 006, 011, 014, ..... 017, 018, 021, 023, 027, ..... 039, 040, 041, 051, 071, 083
Concerto ..... 011, 027	Marantz ..... 013	Sharp ..... 011, 020, 025, ..... 027, 037, 052, 053, 059, 060
Contec/Cony ... 036, 037, 040, 042, 064	Marantz ..... 011, 013, 027, 069	Sony ..... 002
Craig ..... 064	MGA ..... 006, 011, 014, 019, 022, ..... 027, 041, 056, 061, 068	Soundesign ..... 011, 027, 033
Curtis Mathes.. 000, 011, 015, 027, 037	Mitsubishi ..... 006, 011, 014, 019, ..... 022, 027, 041, 055, 056, 061, 068	Sylvania ..... 006, 007, 010, 011, ..... 013, 016, 027, 033, 035, 043, ..... 049, 066, 087, 089
CXC ..... 064	MTC ..... 011, 019, 027	Symphonic ..... 064, 076
Daewoo ..... 011, 019, 027	Multivision ..... 081	Tatung ..... 038
Daytron ..... 011, 027	NAD ..... 018, 023	Technics ..... 012
Electrohome ..... 006, 011, 014, ..... 027, 038, 061, 068	NEC ..... 011, 014, 019, 027, 038, 084	Techwood ..... 011, 027
Emerson ..... 011, 026, 027, 028, 029, ..... 030, 031, 032, 037, 042, 053, ..... 064, 065, 067, 075, 076, 078, 079	Panasonic ..... 012, 013, 038, 086	Teknika ..... 011, 019, 027, 033, 036, ..... 037, 040, 066
Envision ..... 011, 027	Penney ..... 000, 008, 011, 019, 027, ..... 040, 068, 077, 086, 088	Telecaption ..... 090
Fisher ..... 017, 021, 039, 041	Philco ..... 006, 007, 010, 011, 013, ..... 016, 019, 027, 033, 035, 037, ..... 038, 043, 087, 089	TMK ..... 011, 027
Funai ..... 064	Philips ..... 002, 006, 007, 010, 011, ..... 013, 016, 033, 035, 037, 038, ..... 043, 066, 073	Toshiba ..... 018, 021, 023, 040, ..... 071, 077, 085
GE ..... 000, 008, 009, 011, 012, 027, ..... 038, 068, 086, 089, 091	Pioneer ..... 011, 027, 045, 062, 093	Universal ..... 008, 009
Goldstar ..... 003, 004, 006, 011, ..... 019, 027, 037, 050	Portland ..... 011, 019, 027, 037	Victor ..... 051
Hallmark ..... 011, 027	ProScan ..... 000	Vidtech ..... 019, 027
Hitachi ..... 009, 011, 027, 036, 037, ..... 040, 047, 063, 080	Proton ..... 011, 027, 037, 072	Wards ..... 000, 005, 006, 007, 008, ..... 009, 010, 011, 013, 019, 025, ..... 027, 028, 035, 043, 059, 066, ..... 076, 082, 089
Infinity ..... 013	Quasar ..... 012, 038, 092	Yamaha ..... 006, 014, 019, 027
JBL ..... 013	Radio Shack ... 000, 021, 025, 036, 037, ..... 059, 064, 078	Zenith ..... 001
Jensen ..... 011, 027	RCA ..... 000, 006, 011, 019, 027, ..... 034, 038, 044, 046, 072, 088, 100	
JVC ..... 012, 024, 036, 037, 040, ..... 048, 051, 074		
Kawasho ..... 002, 011, 027		
Kenwood ..... 006, 011, 014, 027		

### Laserdisc Player Codes

RCA ..... 033, 037
Pioneer ..... 033, 033
ProScan ..... 033, 037

# Reference

## VCR Codes

Aiwa .....	015	Kenwood .....	002, 014, 016, 030, 044, 046	Radio Shack/Realistic .....	002, 006, 008, 009, 012, 015, 019, 027, 043, 053
Akai .....	003, 017, 022, 023, 063, 066	KLH .....	073	Samsung .....	007, 013, 022, 032, 042
Audio Dynamics .....	014, 016	Lloyd .....	015	Sansui .....	016
Broksonic .....	010	Logik .....	031	Sanyo .....	002, 012
Candle .....	007, 009, 013, 044, 045, 046, 052	Magnavox .....	008, 029, 053, 056	Scott .....	004, 013, 041, 049, 068
Cannon .....	008, 053	Marantz .....	002, 008, 014, 016, 029, 030, 044, 046, 061	Sears .....	002, 005, 009, 012, 018, 019, 035, 043, 048
Capehart .....	001	Marta .....	009	Sharp .....	006, 024, 027, 039, 045
Citizen .....	007, 009, 013, 044, 045, 046, 052	MEI .....	008	Shintom .....	017, 026, 031, 055
Colortyme .....	014	Memorex .....	008, 009, 012, 015	Sony .....	017, 026, 038
Craig .....	007, 012	MGA .....	004, 027	Sylvania .....	008, 015, 029, 053, 056
Curtis-Mathes .....	000, 007, 008, 014, 015, 044, 046, 053, 064, 067	Midland .....	032	Symphonic .....	015
Daewoo .....	013, 045, 052, 076	Minolta .....	005, 035	Tandy .....	002, 015
DBX .....	014, 016	Mitsubishi .....	004, 005, 027, 035, 040	Tashiko .....	009
Dynatech .....	015	Montgomery Ward .....	006	Tatung .....	030
Electrohome .....	027	MTC .....	007, 015	Teac .....	015, 030, 069
Emerson .....	008, 009, 010, 013, 015, 020, 023, 027, 034, 041, 042, 047, 049, 057, 062, 065, 067, 068, 070	Multitech .....	007, 015, 031, 032	Technics .....	008
Fisher .....	002, 012, 018, 019, 043, 048, 058	NEC .....	002, 014, 016, 030, 044, 046, 059, 061, 064	Teknika .....	008, 009, 015, 021
Funai .....	015	Panasonic .....	008, 053, 075, 077	Toshiba .....	005, 013, 019, 048, 049
GE .....	000, 007, 008, 032, 053	Pentax .....	005, 035, 044	Totevision .....	007, 009
Goldstar .....	009, 014, 046, 060	Pentax Research + .....	046	TMK .....	067
Harman Kardon .....	014	Philco .....	008, 029, 053, 056	Unitech .....	007
Hitachi .....	005, 015, 035, 036	Philips .....	008, 029	Vector Research .....	014, 016, 044
Instant Replay .....	008	Pioneer .....	005, 016, 033, 050	Victor .....	016
JCL .....	008	Portland .....	044, 045, 052	Video Concepts .....	014, 016, 044
JC Penney .....	002, 005, 007, 008, 014, 016, 030, 035, 051, 053	ProScan .....	000	Videosonic .....	007
JVC .....	002, 014, 016, 030, 046	Quartz .....	002	Wards .....	005, 006, 007, 008, 009, 012, 013, 015, 025, 027, 031, 035
		Quasar .....	008, 053	Yamaha .....	002, 014, 016, 030, 046
		RCA .....	000, 005, 007, 008, 028, 035, 037, 054, 069	Zenith .....	011, 017, 026, 072

## Cable Box Codes

ABC .....	022, 046, 053, 054	Magnavox .....	007, 008, 019, 021, 026, 028, 029, 032, 033, 040, 041	Signature .....	046
Anvision .....	007, 008	NSC .....	009	Sprucer .....	027
Cablestar .....	007, 008	Oak .....	001, 016, 038	Starcom .....	046
Diamond .....	056	Oak Sigma .....	016	Stargate 2000 .....	058
Eagle .....	007, 008	Panasonic .....	003, 027, 039, 061	Sylvania .....	011, 059
Eastern Int. ....	002	Philips .....	007, 008, 019, 021, 026, 028, 029, 032, 033, 040, 041	Teknika .....	006
General Instruments .....	046	Pioneer .....	018, 020, 044	Texscan .....	010, 011, 059
GI 400 .....	004, 005, 015, 023, 024, 025, 030, 036	RCA .....	000, 027	Tocom .....	017, 021, 049, 050, 055
Hamlin .....	003, 012, 013, 034, 048	Randtek .....	007, 008	Unika .....	031, 032, 041
Hitachi .....	037, 043, 046	Regal .....	003, 012, 013	Universal .....	051, 052, 060
Jerrold .....	004, 005, 015, 023, 024, 025, 030, 036, 045, 046, 047, 062, 065	Regency .....	002, 033	Viewstar .....	007, 008, 019, 021, 026, 028, 029, 032, 033, 040, 041
Macom .....	037, 043	Samsung .....	044	Warner Amex .....	044
		Sci. Atlanta .....	003, 022, 035, 064	Zenith .....	014, 042, 057, 061

# Reference

## Glossary

The following is a list of terms used in this manual.

### **Access Card**

Identifies you to the DSS® service providers and is required for your DSS® system to work. Do not remove the access card except when a new card has been issued to replace the original.

### **Agile Modulator**

Lets you choose an output channel when sending the DSS® signal to a television from the OUT TO TV jack on the receiver.

### **Alternate Audio**

Refers to the different audio channels that may be broadcast in conjunction with a video program. A foreign language translation is an example.

### **Alternate Data**

This feature allows you to download information from future services and programs as they become available.

### **Attractions**

Previews of special programs broadcast by your program provider.

### **Azimuth**

Refers to the left-to-right positioning of your DSS® dish. When you enter your zip code (or latitude and longitude), the display screen provides the number corresponding to an azimuth setting for your location.

### **Channel List**

Allows you to select which channels can be viewed when the system is locked.

### **DSS® Receiver**

Receives, processes, and converts the digitally compressed satellite signals into audio and video.

### **Elevation**

Refers to the up and down positioning of your DSS® dish. When you enter your zip code (or latitude and longitude), the display screen provides the number corresponding to the elevation setting for your location.

### **Limits**

There are three kinds of limits. The Ratings Limit allows you to control program viewing of rated programs by ratings level. The Spending Limit controls spending on a cost-per-program basis. The Channel List allows you to select which channels can be viewed when the system is locked.

### **Locks**

The means of restricting access to certain features of the DSS® system. The lock is controlled by a 4-digit password. The closed or open lock icon in the channel marker indicates whether your system is locked or unlocked.

# Reference

## **Mailbox**

Stores incoming electronic messages sent to you by your program providers.

## **Main Menu**

The first list of choices in the DSS® on-screen menu system. Press the MENU button on the remote or front panel to bring up the Main menu.

## **Past Purchases**

Detailed list of the programs that you have already purchased and viewed.

## **Point and Select**

The method of using the remote control (or front panel) buttons to navigate to and make choices among the different parts of the on-screen displays.

## **Program Guide**

Lists and updates the programs and services available from your program providers.

## **Ratings Limit**

Provides a means of restricting viewing of rated programs, based on program rating information. The operation of this feature depends upon the availability and accuracy of data supplied from and broadcast by the program provider.

## **Signal Meter**

An on-screen display that indicates the relative strength of the satellite signal and sounds a test tone to help you lock in on the satellite signal. The signal meter is used when you adjust your DSS® dish.

## **Spending Limit**

Provides a means of restricting viewing; based on cost-per-program limit.

## **System Test**

Provides a diagnostics check that can be used to determine that the main components of the DSS® system—signal, tuning, phone connection, and access card—are connected and working properly.

## **Themes**

Provides a way to simplify the Program Guide and make it easier to find programs of special interest to you.

## **TV/DSS®**

Remote control and front panel button that toggles the input signal to your TV from the antenna or cable signals to the satellite signal. Similar in function to that of TV/VCR buttons on some VCRs and remote controls.

## **Upcoming Purchases**

Detailed list of the programs you have purchased but have not yet been broadcast.

## **Whole-House Distribution System**

A device which receives signals, amplifies them, and then sends them to other televisions within your home.

## Troubleshooting

The DSS® System Test allows you to run a basic diagnostics check on your DSS® system. If you are experiencing any trouble with your system, run the system test.

Make sure that

- All connections—jacks, cables, etc. are correctly in place. See *Connecting Your DSS® Receiver*, page 46, for more information.
- Batteries are in the remote, and that it is working correctly.
- The access card is installed in the receiver.

## Running the System Test

Follow these steps to run the diagnostics system test on your system.

1. Turn on your TV and the DSS® receiver.
2. Press DSS® to put remote in DSS® mode, then press MENU•SELECT to bring up the Main menu.
3. Point to and select Options.
4. Point to and select System Test. Follow the on-screen directions after the test is completed.
5. If your system does not pass the system test, check any of these potential trouble areas: cabling, pointing the satellite dish, phone connection, and access card.
6. If you continue to have problems, call 1-800-679-4776.



# Appendix A: Warranty Information

## Toll-Free Telephone Product Help

You can reach Thomson Consumer Electronics at the following number:

1-800-679-4776 (Toll free inside U.S.A.)

Our toll-free DSS® System number operates from

8:00 a.m. to 10:00 p.m. EST on weekdays and

10:00 a.m. to 10:00 p.m. EST Saturday and Sunday.

Thomson provides a toll-free telephone number to help you with any problems you may encounter with your DSS® System, as many problems can be diagnosed over the phone. If necessary, a replacement unit can be shipped to you.

**Please have your DSS® System model/serial number and date of purchase ready when you call.** If your unit is out of warranty, we will quote the cost of an exchange unit to you.

## Returning Equipment to Thomson for Repair or Exchange

If we are unable to resolve your problem over the phone we will gladly service your unit or exchange it for a new or refurbished unit. Refer to the limited warranty included in the booklet to learn about your specific rights and responsibilities. *Always consult Thomson and get a Return Authorization number before returning anything.* Obtain a Return Authorization (RA) number from the telephone representative before returning your equipment to avoid delays, accounting errors, or even loss of your unit.

## Important Information to Customers Who Ship Defective Equipment to Thomson Consumer Electronics

The Thomson representative who authorizes the return of your equipment will give you an RA number over the phone. The representative will also provide you with instructions on where and how to return your unit. Write the number in large, clear characters on the outside of the box. *To avoid confusion and misunderstandings, shipments without an RA number clearly visible on the outside of the box will be returned to you at your expense.*

Include a brief note describing the problem and any conversations you have had with Thomson personnel about the problem. Include your name, address and model/serial number of your unit. These numbers are located on the back of your receiver. If your DSS® System is within the warranty period, please provide a copy of the bill of sale to verify purchase date. Use the original box and packing material to protect the equipment from damage in shipment. ***For your protection, insure all shipments for full replacement value and use a reliable shipper.*** Thomson assumes no responsibility for warranty shipments from the customer to the factory if not shipped in the manner prescribed by Thomson.

# Appendix A: Warranty Information

## Digital Satellite System (DSS®) Limited Warranty

### What your warranty covers:

- Any defect in materials or workmanship.
- Basic installation, provided installation is performed by a Thomson Consumer Electronics Authorized Installer.

### For how long after your purchase:

- 90 days - Installation, which includes parts and labor.
- One year - Unit exchange, which includes parts and labor.  
(The warranty period for rental units begins with the first rental or 45 days from date of shipment to the customer, whichever comes first.)

### What we will do:

- **During the initial 90 days:**  
Exchange the defective portion of your DSS® with a new or, at our option, refurbished unit and correct any basic installation defects at no cost to you.
- **After the 90 days and within one year:**  
Exchange the defective portion of your DSS® with a new or, at our option, refurbished unit. Labor costs for the removal and re-installation of any equipment are your responsibility.

### How you get service:

- Call 1-800-679-4776 and have your unit's date of purchase and model/serial number ready. The model/serial number information is on the back of your receiver.
- A representative will troubleshoot your problem over the phone.
- If the representative determines that you should receive a replacement receiver you will be provided with a Return Authorization (RA) number and the location of a nearby exchange point if one exists. No returns will be accepted without the RA number.
- If the representative determines that your antenna/dish is defective they will arrange for its repair or replacement.
- If the representative determines that installation is defective they will arrange for its repair.

# Appendix A: Warranty Information

## **To receive a replacement receiver before your return yours:**

If you are located near an exchange point:

1. We will send a replacement unit to our exchange point next business day delivery in the continental USA.
2. The exchange location will notify you of its arrival.
3. Take your unit and your evidence of purchase date, such as a bill of sale, to the exchange location and you will be provided the new or refurbished unit. Please retain all accessories such as the remote control hand unit.
4. If the repairs are covered by your warranty, you will not be billed.

If you are not located near an exchange point:

1. Provide your Discover, Mastercard, or Visa account number and expiration date to your phone representative. This is for security purposes only and your account will not be charged at this time.
2. We will send you a replacement unit next business day delivery in the continental USA.
3. If you return the unit to us within 14 days from the date you were provided an RA number, only items not covered by warranty will be charged to your account. If your unit is not received within 14 days, the suggested retail value of the receiver will be charged to your credit card. This amount will be credited if the unit is subsequently received.
4. Ship your defective unit back to us using the replacement unit's carton. Shipping instructions will be included on the carton along with your RA number which will allow you to easily ship the unit back to us. Make sure you insure your shipment in case of damage or loss. Include with the shipment:
  - Evidence of purchase date such as a bill of sale.
  - A brief note describing the receiver's problem.
  - Your name, address, and phone number.

**Thomson assumes no responsibility of warranty shipments from the customer to the factory if not shipped in the manner prescribed by Thomson.**

## **To receive a replacement receiver after we have received your unit:**

- Write the RA number on the outside of the carton used to return the unit. Make sure you insure your shipment in case of damage or loss.
- Carefully pack the unit using the original box and packing material if possible. Please retain all accessories that were included with your unit such as the remote control hand unit.
- Include with the shipment:
  - Evidence of purchase date such as a bill of sale.
  - A brief note describing the receiver's problem.
  - Your name, address, and phone number.
- Include a cashier's check or money order for payment if there are any out of warranty labor or parts charges which were indicated by the representative, and you elect not to use your credit card.
- After we receive your product, a new or refurbished unit will be shipped to you next business day delivery in the continental USA.

# Appendix A: Warranty Information

## What your warranty *does not* cover:

- Acts of God, such as but not limited to lightning damage.
- Adjustment of customer controls.
- Damage from misuse or neglect.
- A unit that has been modified or incorporated into other products or is used for institutional or other commercial purposes.
- Batteries.
- Units purchased, serviced, or operated outside the USA. Only the DSS® receiver is covered by this warranty if the system is purchased in the state of Alaska.
- Loss of programming.
- Shipping damage if the unit was not packed and shipped in the manner prescribed by Thomson.
- Storage fees may be charged by the exchange point if you fail to pick up the replacement unit in a timely manner.
- Any installation other than a basic installation. A basic installation consists of:
  - Antenna mounted to a single family dwelling using 100 ft. or less of cable.
  - Antenna grounded to meet National Electrical Code (NEC).
  - Routing of the cabling through a normal frame structure or only one layer of masonry.
  - One TV connected to the antenna.
  - A telephone cable and connection installed at the connected TV.
- Installations performed by anyone other than Thomson Consumer Electronics Authorized Installers.

## Product Registration:

- Please complete and mail the Product Registration Card packed with your DSS® product. It will make it easier to contact you should it ever be necessary. The return of the card is not required for warranty coverage.

## How state law relates to this warranty:

- This warranty gives you specific legal rights, and you may have other rights that vary from state to state.

## If you purchased your product outside the USA:

- This warranty does not apply. Contact your dealer for warranty information.

# Appendix B: FCC Regulations

## FCC Regulations

### FCC Registration Information

Your DSS® equipment is registered with the Federal Communications Commission and is in compliance with parts 15B and 68, FCC Rules and Regulations.

#### **1. Notification to the Local Telephone Company.**

On the bottom of this equipment is a label indicating among other information, the FCC Registration number and Ringer Equivalence Number (REN) for the equipment. You must, upon request, provide this information to your telephone company.

The REN is useful to determine the number of devices you may connect to your telephone line and still have all these devices ring when your telephone number is called. In most (but not all) areas, the sum of the RENs of all devices connected to one line should not exceed 5. To be certain of the number of devices you may connect to your line as determined by the REN, you should contact your local telephone company.

Notes: This equipment may not be used on coin service provided by the telephone company.

Party lines are subject to state tariffs, and therefore, you may not be able to use your own telephone equipment if you are on a party line. Check with your local telephone company.

Notice must be given to the telephone company upon permanent disconnection of your DSS® equipment from your line.

#### **2. Rights of the Telephone Company.**

Should your equipment cause trouble on your line which may harm the telephone network, the telephone company shall, where practicable, notify you that temporary discontinuance of service may be required. Where prior notice is not practicable and the circumstances warrant such action, the telephone company may temporarily discontinue service immediately. In case of such temporary discontinuance, the telephone company must: (1) promptly notify you of such temporary discontinuance (2) afford you the opportunity to correct the situation and (3) inform you of your right to bring a complaint to the Commission pursuant to procedures set forth in Subpart E of Part 68, FCC Rules and Regulations.

The telephone company may make changes in its communications facilities, equipment, operations or procedures where such action is required in the operation of its business and not inconsistent with FCC Rules and Regulations. If these changes are expected to affect the use or performance of your telephone equipment, the telephone company must give you adequate notice, in writing, to allow you to maintain uninterrupted service.

# Appendix B: FCC Regulations

## Radio Interference

This equipment has been type tested and found to comply with the limits for a Class B Digital Device in accordance with the specifications in Part 15 of FCC Rules. These rules are designed to provide reasonable protection against radio and television interference in a residential installation. This equipment generates, uses and can radiate radio frequency energy and, if not installed and used in accordance with the instructions, may cause harmful interference to radio communications. However, there is no guarantee that interference will not occur in a particular installation.

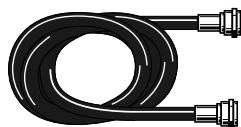
If this equipment does cause interference to radio or television reception (which you can determine by turning the equipment off and on), try to correct the interference by one or more of the following measures.

- Reorient or relocate the receiving antenna (that is, the antenna for radio or television that is “receiving” the interference).
- Change the position of the DSS® satellite receiver with respect to the radio or television equipment that is receiving interference.
- Move the DSS® satellite receiver away from the equipment that is receiving interference.
- Plug the DSS® satellite receiver into a different wall outlet so that the DSS® satellite receiver and the equipment receiving interference are on different branch circuits.

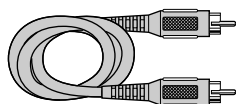
If these measures do not eliminate the interference, please consult your dealer or an experienced radio/television technician for additional suggestions. Also, the Federal Communications Commission has prepared a helpful booklet, “How To Identify and Resolve Radio/TV Interference Problems”. This booklet is available from the U.S. Government Printing Office, Washington, D.C. 20402. Please specify stock number 004-000-00345-4 when ordering copies.

# Appendix C: Accessories

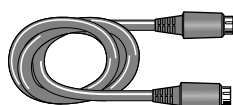
## Audio/Video Cables



RG-6 Coaxial Burial Cable with weatherproof "F" connectors



Stereo Audio/Video Cable with gold RCA-type connectors

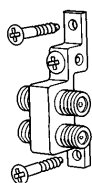


S-VHS Video Cable

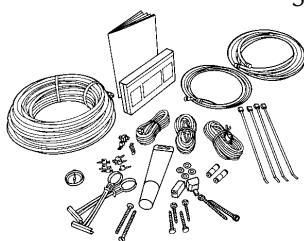


(2) Weatherproof "F" Connectors for RG-6 coaxial cable

## Miscellaneous Supplies



Grounding Block for RG-6 coaxial cable



Self-Installer's Kit

## Accessory Order Form for ProScan DSS® Models

Description	Part No.	Price	Qty	Total
RG-6 Coaxial Cable				
12 feet	D912	\$12.95		
25 feet	D925	\$15.95		
50 feet	D950	\$21.95		
75 feet	D975	\$29.95		
100 feet	D901	\$29.95		
Stereo Audio/Video Cable				
6 feet	D906	\$12.95		
12 feet	D914	\$14.95		
S-Video Cable	D913	\$12.95		
"F" Connector	D905	\$ 5.30		
Grounding Block	D902	\$ 2.95		
TVRO Bullet Amplifier	D903	\$24.95		
Self-Installer's Kit	DKIT94	\$69.95		

Prices are subject to change without notice.

Total Merchandise (\$10 Minimum Order) ..... \$

Sales Tax ..... \$

We are required by law to collect the appropriate sales tax for each individual state, country, and locality to which the merchandise is being sent.

Shipping, Handling, and Insurance ..... \$ 5.00

Total Amount Enclosed ..... \$

Use VISA or MasterCard preferably.

Money order or check must be in U.S. currency only.

No COD or CASH.

All accessories are subject to availability.

Where applicable, we will ship a superseding model.

Detach Here


Please complete other side also

## Appendix C: Accessories

Charge your order on your VISA  
or MasterCard by  
filling in below


**USE YOUR CREDIT CARD**

**IMPORTANT:** Copy complete account number  
from your VISA card



My card expires:

**IMPORTANT:** Copy complete account number  
from your MasterCard



Copy Number  
above your  
name on  
MasterCard

My card  
expires:

---

**AUTHORIZED SIGNATURE**

Prices are subject to change without notice.

PLEASE

Print or type your name and address clearly. This will be your mailing label.

A complete and correct order will  
save you days of waiting.

Name: \_\_\_\_\_

Street: \_\_\_\_\_

\_\_\_\_\_ Apt: \_\_\_\_\_

City: \_\_\_\_\_

State: \_\_\_\_\_ Zip: \_\_\_\_\_

To order accessories, contact your local ProScan Dealer.

If a dealer is not nearby, you can also follow the instructions below to order by telephone.

## United States and Canadian Orders

To place your order by phone, have your Visa or MasterCard ready and call the toll-free number listed below between 8 AM and 8 PM Eastern Standard Time. **Use this number only to place an order for accessory items listed on this order form.**

**1 - 800 - 338 - 0376**

Most times your order will be shipped UPS within 72 hours of receipt. If ever it is not possible to ship within 30 days, we will notify you with an update on your order and an option to cancel.

To place your order by mail, detach and mail the completed order form with credit card information, money order, or check in U.S. currency (made payable to Thomson Consumer Electronics, Inc.) to the following address:

ProScan Video Accessories  
P.O. Box 8419  
Ronks, PA 17573

**For more information on these accessories (or current prices), write to the following address:**

Video Accessories Customer Service  
Thomson Consumer Electronics, Inc.  
Distributor & Special Products  
2000 Clements Bridge Rd  
Deptford, NJ 08096-2088

## International Orders

This offer is valid only in the 50 United States and Canada. For international orders, please send your request for quotation (not an order) to:

International Customer Service  
Thomson Consumer Electronics, Inc.  
Distributor & Special Products  
2000 Clements Bridge Rd  
Deptford, NJ 08096-2088



# index

## A

Access Card 59  
    new card setup 37  
Agile Modulator 40, 41, 42  
ALT AUD button 36  
Alternate audio 36, 37  
Alternate Data 68  
Arrow keys 8  
Attractions Guide 13, 31  
Audio/Video jacks 46  
Auto Help 38

## B

Back Panel controls 61  
    AUDIO RIGHT AND LEFT 61  
    IN FROM ANT 61  
    LOW SPEED DATA port 61  
    OUT TO TV 61  
    PHONE JACK 61  
    REMOTE IN 61  
    S-VIDEO 61  
    SATELLITE IN 61  
    VCR CONTROL 61  
    VIDEO 61  
    WIDE BAND DATA port 61  
Batteries  
    installing in the remote 5

## C

Channel Guide 13  
Cinemascreen 37  
CLEAR button 8, 18  
Coming attractions 31  
Control Panel Main menu 19

## D

DIRECTV 4  
DSS® Satellite Dish Antenna 58

## E

Editing the channel list 24  
Editing the User Profiles 23  
Exiting a menu 18

## F

Family profile 21  
FAV•INPUT button 28  
FCC Regulations 75  
FETCH button 35  
flashing ON/OFF light 35  
Front Panel controls 60  
    ANTENNA 60  
    ARROWS 60  
    DISPLAY 60  
    MENU•SELECT 60  
    ON/OFF 60

## G

Glossary (on-screen) 38  
Grid Guide 12  
GUIDE button 10

## H

Help 18, 38  
    Auto-help 38  
    Back panel 38  
    Glossary 38  
    Menu help 38  
    Menu System 38  
    On-line 38  
    Program guide 38  
    Remote control 38  
Help balloons 19  
Help Buttons 38  
Help-line (toll-free) 71

## I

Info Guide 12  
Interactive setup 56

## L

Limited Warranty 72  
Living Room Main menu 19  
Locking the system 27

## M

Mailbox 35  
    checking your mail 35  
    deleting mail messages 36  
    size 36  
Main menu 18  
    Control Panel 19  
    Living Room 18, 19  
    switching types 19  
Menu Help 38  
MENU•SELECT button 8  
Menus  
    Assistance 20  
    Dish Pointing 20  
    Mailbox 20  
    Options 20  
    Profiles 20  
    Program Guide 20  
    Purchases 20  
    Timers 20  
Movies button (on-screen) 14

## O

On-Line Help 38  
ON/OFF Indicator Light, flashing 35  
One-button recording 34  
Open Safe 23  
Ordering DSS programming 4  
Output channel 40, 42

# Index

## P

### Passwords

- personal 25
- system 27

### Past purchases 32

### Pay-per-view 30

### Personal password 25

- setting 25

### Picture size 37

### PPV (pay-per-view) 30

### Profiles

- changing appearance 22
- ratings limit 24
- spending limits 26

### Program Guide

- All Button 15
- Arrow Button 14
- Attractions Guide 13
- bringing up 10
- Channel Guide 13
- exiting 15
- Grid Guide 12
- Other 15
- selecting 11
- sorting 14
- Sports Button 14
- Theme button 15
- Topic Guide 13
- types 11

### Program Provider Authorization Center 58

### Programming the Remote 63

- to control a TV 63
- to control a VCR 64
- to control other devices 64

### Purchases menu 32

### Purchasing a PPV program 30

## R

### Ratings limit 24

### Receiver 59

### Recording DSS® Program 33-34

### Remote control

- buttons 62
- installing batteries 5
- programming 63
- setup 63
- signal extender 43-44

### RF jacks 46

## S

### S-Video jack 46

### Satellite Dish 59

### Selecting a user profile 28

### Selecting a VCR type 33

### Session unlock 28

### Setting the ratings limit 24

### Sort button 15

### Sorting the Program Guide 14

### Spending limits 26

### System controls 26

### System lock 27

### System Test 37

## T

### Timer feature 33

- recording with 34
- setting up 33

### Topic Guide 13

### Troubleshooting 70

### Tuning to a pay-per-view program 30

## U

### Unlocking the system 27

- temporarily 28

### Upcoming purchases 32

### Uplink Center 58

### User Profiles

- creating/editing 23
- selecting 28

### USSB 4

## V

### VCR controller 33

## W

### Warranty information 71

### Whole-House Distribution System 40, 69



# PROSCAN

An RCA Entertainment Product

 **THOMSON CONSUMER ELECTRONICS**

10330 North Meridian Street  
Indianapolis, IN 46290

©1996 Thomson Consumer Electronics, Inc.

Trademark(s)® Registered

Marca(s) Registrada(s)

Printed in USA

TOCOM 1508778A



50%  
RECYCLED PAPER  
MINIMUM 10% POST CONSUMER

