

# WIRING DIAGRAM

DIAGRAM:

## LLWT610 QTS2 SERIES

WIRING INFORMATION:

LINE VOLTAGE:

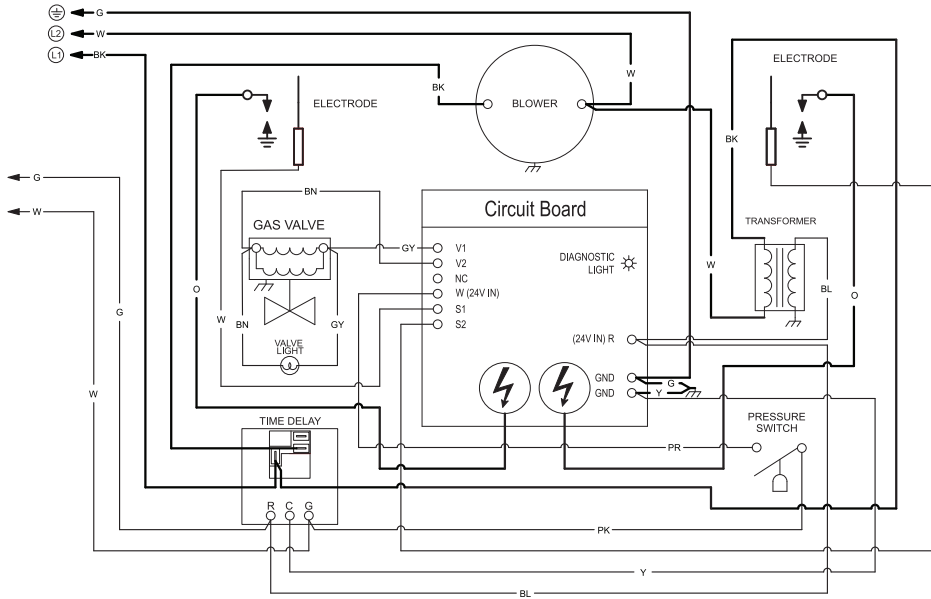
FACTORY STANDARD \_\_\_\_\_  
FACTORY OPTION \_\_\_\_\_  
FIELD INSTALLED \_\_\_\_\_

LOW VOLTAGE:

FACTORY STANDARD \_\_\_\_\_  
FACTORY OPTION \_\_\_\_\_  
FIELD INSTALLED \_\_\_\_\_

NOTES:

IF ANY OF THE ORIGINAL WIRE AS SUPPLIED WITH THE APPLIANCE MUST BE REPLACED, IT MUST BE REPLACED WITH WIRING MATERIAL HAVING THE RATING OF AT LEAST 600V 105°C



### COMPONENT CODES

⊕ EARTH GROUND	TRANSFORMER	PRESSURE SWITCH
⏏ CHASSIS GROUND	BLOWER MOTOR	S.P.S.T. RELAY
Ⓛ LINE VOLTAGE	HOT SURFACE IGNITER	INDICATOR LIGHT
Ⓝ NEUTRAL	SPARK IGNITER	GAS VALVE
● WIRE NUT	FLAME SENSOR	QUICK-CONNECT TERM.

### WIRING COLORS:

BK.....BLACK  
BN.....BROWN  
R.....RED  
O.....ORANGE  
Y.....YELLOW  
G.....GREEN  
BL.....BLUE  
PR.....PURPLE  
W.....WHITE  
GY.....GRAY

VOLTAGE:	FREQUENCY:	PHASE:
120VAC	60Hz	SINGLE

REVISION:	LITERATURE NUMBER:
2	LLWT610-XM-08/16 (CDS)