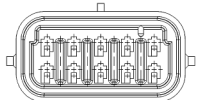
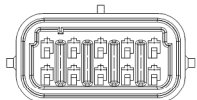


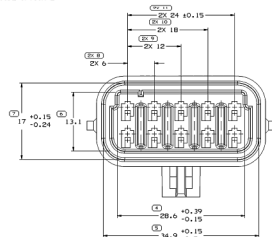
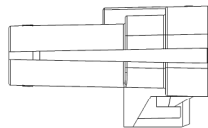
TYPE 102
SAME AS TYPE 101
EXCEPT AS SHOWN



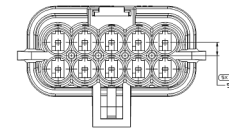
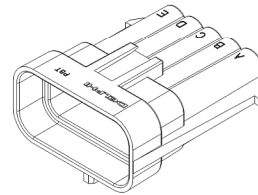
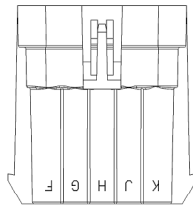
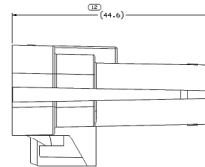
TYPE 103
SAME AS TYPE 101
EXCEPT AS SHOWN



TYPE 104
SAME AS TYPE 101
EXCEPT AS SHOWN



TYPE 101



SYMBOL DEFINITION

TOTAL NO. OF
INSPECTIONS
REQUIRED

MISSING SYMBOLS
NUMBER

NO.	DESCRIPTION	DATE	BY
20491	8 21		
20492	8 21		
20493	8 21		
20494	8 21		

A DIMENSION WITHOUT AN INSPECTION REPORT SYMBOL,
COLORS NOT REQUIRING INSPECTION, IS NOT TO BE
CONTROLLED ON THE INDIVIDUAL COMPONENT DRAWING.

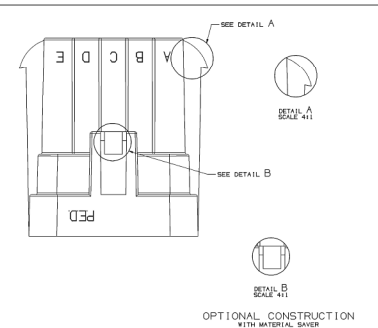
PART NO.
12052187

13

NO.	DESCRIPTION	DATE	BY
20491	8 21		
20492	8 21		
20493	8 21		
20494	8 21		

MATERIAL RECYCLING CODE OPTIONAL

- NOTES
- UNLESS OTHERWISE SPECIFIED AND/OR INDICATED, DIMENSIONS ARE TO FACE OF VIEW SHOWN AND AUTOMATICALLY PROVIDED BY COMPUTER FOR INSPECTION USE WITH MINUS OR PLUS DIMENSIONS. FOR ALL OTHER DIMENSIONS NOT SHOWN BUT REQUIRED FOR TOLERANCE, SEE WITH MODEL FOR PRECISE TOOL PATH DATA.
 - MATERIAL RECYCLING CODE (MPC) PER SAE J1344, (2, 3, 4, 5, 6, 7, 8, 9, 10, 11, 12) RAISED CHARACTERS SHALL BE LOCATED ON ANY EXPOSED SURFACE. OPTIONAL CONSTRUCTION TO BE NO MATERIAL RECYCLING CODE.
 - THIS PART IS NOT CONTROLLED FOR AUTOMATIC FEEDING.
 - IF 31X10-11 RAISED DELPHI CORPORATE BRAND TO BE LOCATED ON ANY EXPOSED SURFACE, PRESENTLY VISIBLE AT FINAL ASSEMBLY. OPTIONAL CONSTRUCTION TO BE "TRD" OR NO LOGO.
 - THIS PRODUCT IS NOT CATEGORIZED AS AN APPEARANCE ITEM, MINOR IMPERFECTIONS INCLUDING, BUT NOT LIMITED TO, FLOW MARKS, COLOR BLENDS, OR FLUCTUATION OF THE PAINT FILM THICKNESS ARE NOT TO BE A CAUSE FOR REJECTION OF THE PART. USE SIMILARITY TO PART 11-10-18.
 - FOR APPLICATION DATA SEE THE INDIVIDUAL APPLICATION DRAWINGS.



12052187

PART NO.	REV.	DATE	STATUS	TYPE	MATERIAL SPECIFICATION AND COLOR	VOL. CHG.
12052187	001				POLYESTER COMPOUND, BK	0.000
12052187	002				POLYESTER COMPOUND, BK	0.000
12052187	003				POLYESTER COMPOUND, BK	0.000
12052187	004				POLYESTER COMPOUND, BK	0.000

DATE: 08/21/2014
TIME: 10:10:11 AM
USER: [unreadable]

DELPHI
DELTA POWER ELECTRONIC ELECTRICAL ASSISTED SYSTEMS

12052187

DATE: 08/21/2014
TIME: 10:10:11 AM
USER: [unreadable]

181520S1