

11132**PT CRUISER**

7/12/2012

GROSS LOAD CAPACITY WHEN USED AS A WEIGHT CARRYING HITCH: 2,000 LBS. TRAILER WEIGHT & 200 LBS. TONGUE WEIGHT.*****DO NOT EXCEED VEHICLE MANUFACTURER'S RECOMMENDED TOWING CAPACITY.*******WARNING: ALL NON-TRAILER LOADS APPLIED TO THIS PRODUCT MUST BE SUPPORTED BY AUXILIARY STABILIZING STRAPS.****** FAILURE TO PROPERLY SUPPORT NON-TRAILER LOADS WILL VOID PRODUCT WARRANTY****

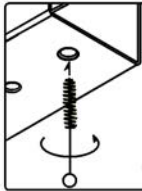
| Parts List | | | |
|------------|-----|------------------|------------------------|
| ITEM | QTY | PART NUMBER | DESCRIPTION |
| 1 | 8 | M10 - 1.5 x 40mm | HEX BOLT |
| 2 | 8 | 7/16" | CONICAL TOOTHED WASHER |

**RUBBER ISOLATOR
REMOVAL DIAGRAM**

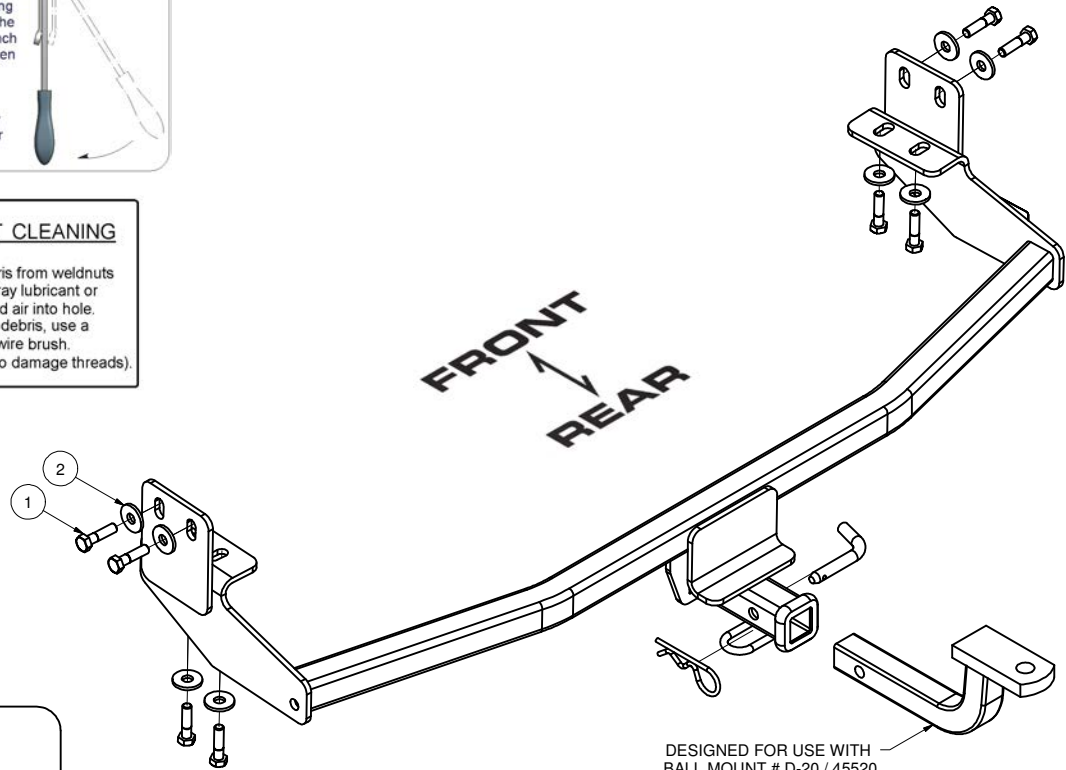
This technique can be used if an Exhaust Hanger Removal Pliers is not available.

Using a 5/8" open end wrench, slide the wrench up to the rubber isolator, cradling the hanger rod as shown. Next place the flat edge of a pry bar between the wrench and the hanger stop or hanger rod. Then simply rotate the pry bar toward the wrench to remove the rubber isolator.

Note: Using a spray lubricant or soapy water on the hanger rod and the rubber isolator helps removal.

**WELDNUT CLEANING**

To remove debris from weldnuts in frame, spray lubricant or compressed air into hole. For heavy debris, use a small wire brush. (Be careful not to damage threads).

**HITCH WEIGHT:** 24 LBS.**INSTALL TIME**

PROFESSIONAL: 30 MINUTES

NOVICE (DIY): 60 MINUTES

INSTALL NOTES:

NO DRILLING REQUIRED

INSTALLATION STEPS

- 1) REMOVE TOW HOOK BRACKETS FROM VEHICLE FRAME AND RETURN TO OWNER. MAY NEED TO LOWER SPARE TIRE CARRIER FOR EASE OF INSTALLATION.
- 2) TEMPORARILY LOWER EXHAUST SYSTEM AT TWO HANGERS, ONE AT FRONT AND OTHER AT REAR OF MUFFLER.
- 3) RAISE HITCH INTO POSITION, LINING UP HOLES IN HITCH AND FRAME.
- 4) INSTALL EXISTING M10 FASTENERS. TORQUE ALL M10 FASTENERS TO 45 LB-FT.
- 5) REATTACH EXHAUST SYSTEM HANGERS.

PERIODICALLY CHECK THIS RECEIVER HITCH TO ENSURE THAT ALL FASTENERS ARE TIGHT AND THAT ALL STRUCTURAL COMPONENTS ARE SOUND.



The **FIRST** Name
in Towing Products™

[Trailer Hitches](#)