

COR IBR1100 / IBR1150 (Integrated Broadband Router)



# QUICK START GUIDE

## SETTING UP THE ROUTER

- 1) Purchase a data plan. Then insert the SIM as shown on page 2.
- 2) Connect WiFi, modem and GPS antennas as desired. (Sold separately.) Finger tight only.
- 3) Wire power cable to 9-36v power source. (AC power supply sold separately.)



### What's In The Box

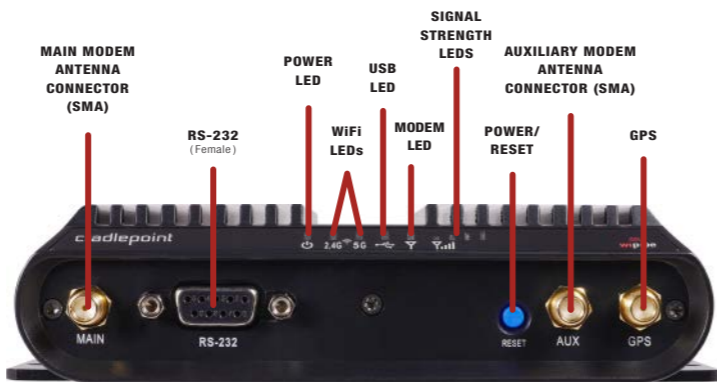
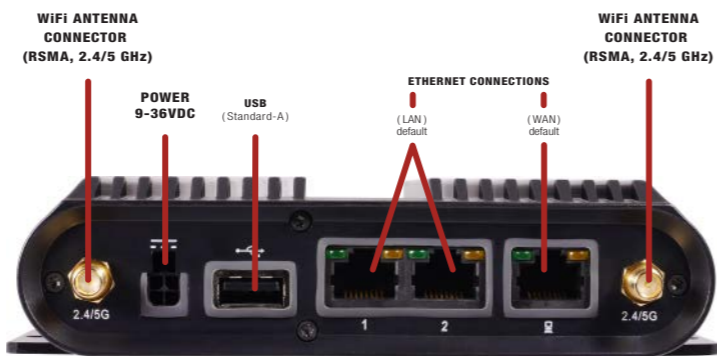


Sold separate: AC Power Supplies, WiFi Antennas, GPS Antennas, Cell Antennas.

For more information about your product, visit: [cradlepoint.com](http://cradlepoint.com)

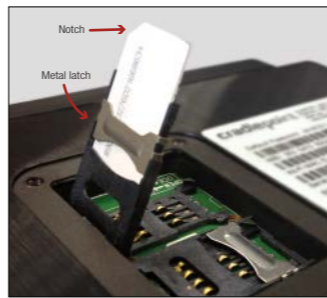


## PORTS & SWITCHES



See Product Manual for suggested antenna positions.

## SIM CARD SETUP



To insert or remove SIM card:

- 1) Remove bottom SIM cover.
- 2) Slide metal latch down to unlock.
- 3) Pull cartridge upward, so it is standing at a 90° angle.
- 4) Insert SIM card with metal contacts down and notch out.
- 5) Press cartridge back into place.
- 6) Return metal latch to start (lock) position.
- 7) Replace bottom SIM cover.

**Note: Device will not power on without cover in place.**

2

## ACCESSING THE ADMINISTRATION PAGES

To make configuration changes to your router, open the IBR1100's GUI-based administration pages.

- 1) Connect via Ethernet or WiFi. For WiFi, the default SSID is **IBR1100-xxx** (last 3 characters of the MAC address).
- 2) Open a browser window and type "**cp/**" or "**192.168.0.1**" in the address bar. Press **ENTER/RETURN**.
- 3) When prompted for your password, type the **eight character DEFAULT PASSWORD** found on the product label.



Find this label on the bottom of your router. >

## THE FIRST TIME SETUP WIZARD

When you log in for the first time, you are automatically directed to the **FIRST TIME SETUP WIZARD**, which will help you customize your COR IBR1100. Change any of the following:

- Administrator password
- Time zone
- WiFi network name, security mode, and password
- Access Point Name (APN) for SIM-based modems
- WAN failure check mode

If you are currently using the IBR1100 WiFi network, you will need to reconnect your devices to the network using the newly established wireless network name and password.

**NOTE: To return to the First Time Setup Wizard after your initial login, select GETTING STARTED on the top navigation bar and FIRST TIME SETUP in the dropdown menu.**

**RESET:** To restore the COR IBR1100 to its factory default settings, press and hold the **RESET** button on the side of the device for ten seconds. Reset returns the login password to the **DEFAULT PASSWORD** and resets all configuration changes.

3

## ACTIVATE YOUR MODEM

A wireless broadband data plan must be added to your IBR1100. Wireless broadband data plans are available from wireless carriers such as Sprint, Verizon, AT&T, EE, Vodafone, and Clearwire. Mobile broadband, M2M, and router pricing plans are available. To add or transfer a line of service you will need to provide the IMEI/MEID for LTE modems. LTE plans also require a SIM. SIM provisioning for LTE models is done the same way as for USB modems. Once provisioned insert the SIM into the router as shown on page 2.

For more information on activation see [cradlepoint.com/activation](http://cradlepoint.com/activation).

## SPECIAL FEATURES

- IPsec VPN End-Point Support
- GRE Tunneling
- Data Usage Management & Alerts
- GPIO Interface
- GPS
- Load-Balancing & Failover/Failback
- WiFi Hotspot Services (Captive Portal)
- IP Passthrough
- WiFi as WAN & Dual SSIDs
- VLAN Support
- CradlePoint Enterprise Cloud Manager
- USB to Serial Console
- Passthrough Support
- LAN/WAN Affinity
- BGP/OSPF/RIP
- VRRP

## GPS

The **IBR1100** and **IBR1150** come with an active GPS connection at 3.3 V and 100 mA max.

For full functionality you will need to use an active GPS antenna. TAIP and NMEA Protocol Support.

## CRADLEPOINT ENTERPRISE CLOUD MANAGER

### NEXT GENERATION NETWORK MANAGEMENT AND APPLICATION PLATFORM

Rapidly deploy and dynamically manage networks at geographically distributed stores and branch locations with Enterprise Cloud Manager. CradlePoint's next generation application platform that will improve productivity, increase reliability, reduce costs, and enhance the intelligence of your network and business operations.

*Subscription required. See [cradlepoint.com/ecm](http://cradlepoint.com/ecm) for details.*

To learn more about features, visit [cradlepoint.com/IBR1100](http://cradlepoint.com/IBR1100)

4

## UPDATING FIRMWARE

CradlePoint regularly creates new firmware packages. You may need to update firmware to use the IBR1100 with new modems and to access our latest features.

### HOW TO UPDATE FIRMWARE

- 1) Log into the administration pages (see page 3). You may have changed the **ADMINISTRATOR PASSWORD** when you used the **FIRST TIME SETUP WIZARD**.
- 2) Select **SYSTEM SETTINGS** on the top navigation bar, then **SYSTEM SOFTWARE** in the dropdown menu.
- 3) Find the **FIRMWARE UPGRADE** section. This displays the current firmware version that is installed and indicates if updated firmware is available.
- 4) Click **AUTOMATIC (Internet)** if new firmware is available. The IBR1100 will download and install the firmware and automatically reboot itself. A status monitor will appear and indicate when this process is complete. This process may take several minutes depending on your Internet connection speed.

If your device does not have an active Internet connection, you need to download the latest firmware from [cradlepoint.com/firmware](http://cradlepoint.com/firmware) to your desktop. Then use the **MANUAL FIRMWARE UPLOAD** option.

**NOTE: Access to firmware upgrades requires a CradleCare Support Agreement or Enterprise Cloud Manager.**

This important Product Information and Safety Guide contains safety, handling, disposal, regulatory, trademark, copyright, and software licensing information. Read all safety information below and operating instructions before using the IBR1100 device to avoid injury.

**FEDERAL COMMUNICATION COMMISSION INTERFERENCE STATEMENT** This equipment has been tested and found to comply with the limits for a Class B digital device, pursuant to Part 15 of the FCC Rules. These limits are designed to provide reasonable protection against harmful interference in a residential installation. This equipment generates, uses and can radiate radio frequency energy and, if not installed and used in accordance with the instructions, may cause harmful interference to radio communications. However, there is no guarantee that interference will not occur in a particular installation. If this equipment does cause harmful interference to radio or television reception, which can be determined by turning the equipment off and on, the user is encouraged to try to correct the interference by one of the following measures:

- Reorient or relocate the receiving antenna.
- Increase the separation between the equipment and receiver.
- Connect the equipment into an outlet on a circuit different from that to which the receiver is connected.
- Consult the dealer or an experienced radio/TV technician for help.

5

**FCC CAUTION:** Any changes or modifications not expressly approved by the party responsible for compliance could void the user's authority to operate this equipment.

This device complies with Part 15 of the FCC Rules. Operation is subject to the following two conditions: (1) This device may not cause harmful interference, and (2) this device must accept any interference received, including interference that may cause undesired operation.

### IMPORTANT NOTE

**FCC Radiation Exposure Statement:** This equipment complies with FCC radiation exposure limits set forth for an uncontrolled environment. This equipment should be installed and operated with minimum distance 25cm between the radiator & your body.

To comply with FCC regulations limiting both maximum RF output power and human exposure to RF radiation, for the IBR1100 and IBR1150, the maximum antenna gain in the cellular bands must not exceed 3dBi. For the IBR1100, the maximum WiFi antenna gain in the 2.4 and 5 GHz bands must not exceed 5dBi.

**SAFETY AND HAZARDS** This equipment is designed to operate in ambient temperatures up to 70°C (158° F). When operating in elevated ambient temperatures, the surface of the equipment may exceed 70°C and become too hot to safely touch. Under this condition, this product must be installed in a secured location that is not accessible to accidental touch, and access to the device must be restricted to service persons or users who possess the proper tool or key to access the device and have been informed about the potential high surface temperatures and instructed on how to safely handle and/or service the device.

Under no circumstances should the IBR1100 device be used in any areas (a) where blasting is in progress, (b) where explosive atmospheres may be present, or (c) that are near (i) medical or life support equipment, or (ii) any equipment which may be susceptible to any form of radio interference. In such areas, the IBR1100 device MUST BE POWERED OFF AT ALL TIMES (since the device otherwise could transmit signals that might interfere with such equipment). In addition, under no circumstances should the IBR1100 device be used in any aircraft, regardless of whether the aircraft is on the ground or in flight. In any aircraft, the IBR1100 device MUST BE POWERED OFF AT ALL TIMES (since the device otherwise could transmit signals that might interfere with various onboard systems on such aircraft). Furthermore, under no circumstances should the IBR1100 device be used by the driver or operator of any vehicle. Such use of the device will detract from the driver's or operator's control of that vehicle. In some jurisdictions, use of the IBR1100 device while driving or operating a vehicle constitutes a civil and/or criminal offense.

Due to the nature of wireless communications, transmission and reception of data by the IBR1100 device can never be guaranteed, and it is possible that data communicated or transmitted wirelessly may be delayed, corrupted (i.e., contain errors), or totally lost. The IBR1100 device is not intended for, and CradlePoint recommends the device not be used

in any critical applications where failure to transmit or receive data could result in property damage or loss or personal injury of any kind (including death) to the user or to any other party. CradlePoint expressly disclaims liability for damages of any kind resulting from: (a) delays, errors, or losses of any data transmitted or received using the device; or (b) any failure of the device to transmit or receive such data.

For proper and safe vehicle installations, the GPIO accessory cable must be connected to a fused circuit in the vehicle. This fused circuit requires a 2A fuse. If the supply connection is made directly to the battery, the fuse should be installed in the positive lead. For North America, a UL Listed fuse is to be used.

6

**Warning:** This product is only to be installed by qualified personnel!

For product available in the USA/Canada market, only channel 1-11 can be operated. Selection of other channels is not possible. This device and its antenna(s) must not be co-located or operated in conjunction with any other antenna or transmitter.

### Industry Canada Statement

This device complies with RSS-210, RSS-102, and RSS-Gen of the Industry Canada Rules. Operation is subject to the following two conditions: (1) This device may not cause harmful interference, and (2) this device must accept any interference received, including interference that may cause undesired operation.

### IMPORTANT NOTE: Radiation Exposure Statement

This equipment complies with IC radiation exposure limits set forth for an uncontrolled environment. This equipment should be installed and operated with minimum distance 25cm between the radiator and your body.

This device has been designed to operate with cellular antennas having a maximum gain of 3 dBi. Antennas having a higher gain are strictly prohibited per regulations of Industry Canada. The required antenna impedance is 50 ohms.

This device has been designed to operate with WiFi antennas having a maximum gain of 5 dBi. Antennas having a higher gain are strictly prohibited per regulations of Industry Canada. The required antenna impedance is 50 ohms.

### Déclaration d'Industrie Canada

Ce dispositif est conforme à la norme CNR-210, CNR-102, et CNR-Gen d'Industrie Canada applicable aux appareils radio exempts de licence. Son fonctionnement est sujet aux deux conditions suivantes: (1) le dispositif ne doit pas produire de brouillage préjudiciable, et (2) ce dispositif doit accepter tout brouillage reçu, y compris un brouillage susceptible de provoquer un fonctionnement indésirable.

### NOTE IMPORTANTE (Pour l'utilisation de dispositifs mobiles): Déclaration d'exposition aux radiations

Cet équipement est conforme aux limites d'exposition aux rayonnements IC établies pour un environnement non contrôlé. Cet équipement doit être installé et utilisé avec un minimum de 25 cm de distance entre la source de rayonnement et votre corps

Ce dispositif a été conçu pour fonctionner avec une antenne cellulaire ayant un gain maximal de 3 dBi. Une antenne à gain plus élevée est strictement interdite par les règlements d'Industrie Canada. L'impédance d'antenne requise est de 50 ohms.

Ce dispositif a été conçu pour fonctionner avec une antenne WiFi ayant un gain maximal de 5 dBi. Une antenne à gain plus élevée est strictement interdite par les règlements d'Industrie Canada. L'impédance d'antenne requise est de 50 ohms.

**INFORMATION FOR EUROPE, DECLARATION OF COMPLIANCE** CradlePoint, Inc declares that the IBR1100 / IBR1150 is in compliance with the essential requirements of the R&TTE Directive 1999/5/EC, Energy Related Products Directive 2009/125/EC, Electromagnetic Compatibility Directive 2004/108/EC, Low Voltage Directive 2006/95/EC, and RoHS2 Directive 2011/65/EU.

7

A copy of the original European DoC may be obtained from [cradlepoint.com/product-certifications](http://cradlepoint.com/product-certifications)  
AT BE BG CY CZ DK EE FI FR DE GR HU IE IT LV LT LU MT NL PL PT RO SK SI ES SE GB IS LI NO CH TR  
Operation of the device in the 5150-5250 MHz frequency band is restricted to indoor use only. To comply with RF Exposure requirements, the product must be installed and operated with a minimum separation distance of 25 cm between the antennas and nearby persons.



**RECYCLING AND ENVIRONMENTAL INFORMATION** To find information on CradlePoint's commitment to our environment and how to responsibly recycle CradlePoint products, please visit [cradlepoint.com](http://cradlepoint.com).

**OPEN SOURCE SOFTWARE** This product contains software distributed under one or more of the following open source licenses: GNU General Public License Version 2, BSD License, Net-SNMP License, and PSF License Agreement for Python 3.3. For more information on this software, including licensing terms and your rights to access source code, contact CradlePoint at [www.cradlepoint.com/opensource](http://www.cradlepoint.com/opensource).

**WARRANTY INFORMATION** CradlePoint, Inc. warrants this product against defects in materials and workmanship to the original purchaser (or the first purchaser in the case of resale by an authorized distributor) for a period of one (1) year from the date of shipment. This warranty is limited to a repair or replacement of the product, at CradlePoint's discretion as purchaser's sole and exclusive remedy. CradlePoint does not warrant that the operation of the device will meet your requirements or be error free. Within thirty (30) days of receipt should the product fail for any reason other than damage due to customer negligence, purchaser may return the product to the point of purchase for a full refund of the purchase price. If the purchaser wishes to upgrade or convert to another CradlePoint, Inc. product within the thirty (30) day period, purchaser may return the product and apply the full purchase price toward the purchase of another CradlePoint product. Any other return will be subject to CradlePoint, Inc.'s existing return policy.

**LIMITATION OF CRADLEPOINT LIABILITY** The information contained in this Quick Start Guide is subject to change without notice and does not represent any commitment on the part of CradlePoint or its affiliates. CRADLEPOINT AND ITS AFFILIATES HEREBY SPECIFICALLY DISCLAIM LIABILITY FOR ANY AND ALL: (A) DIRECT, INDIRECT, SPECIAL, GENERAL, INCIDENTAL, CONSEQUENTIAL, PUNITIVE OR EXEMPLARY DAMAGES, INCLUDING WITHOUT LIMITATION FOR LOSS OF PROFITS OR REVENUE OR OF ANTICIPATED PROFITS OR REVENUE ARISING OUT OF THE USE OR INABILITY TO USE THE DEVICE, EVEN IF CRADLEPOINT AND/OR ITS AFFILIATES HAVE BEEN ADVISED OF THE POSSIBILITY OF SUCH DAMAGES, AND EVEN IF SUCH DAMAGES ARE FORESEEABLE; OR (B) CLAIMS BY ANY THIRD PARTY. Notwithstanding the foregoing, in no event shall the aggregate liability of CradlePoint and/or its affiliates arising under or in connection with the device, regardless of the number of events, occurrences, or claims giving rise to liability, exceed the price paid by the original purchaser of the device.

**PRIVACY** CradlePoint collects general data pertaining to the use of CradlePoint products via the Internet including, by way of example, IP address, device ID, operating system, browser type and version number, etc. To view CradlePoint's privacy policy, please visit: [cradlepoint.com/privacy](http://cradlepoint.com/privacy).

**OTHER BINDING DOCUMENTS; TRADEMARKS; COPYRIGHT** By activating or using your IBR1100 device, you agree to be bound by CradlePoint's Terms of Use, User License and other Legal Policies, all as posted at [cradlepoint.com/legal](http://cradlepoint.com/legal). Please read these documents carefully.

© 2014 CradlePoint, Inc. All rights reserved. CradlePoint is not responsible for omissions or errors in typography or photography. CradlePoint, IBR1100, WiPipe™, the WiPipe logo, and the CradlePoint logo are trademarks of CradlePoint, Inc. in the US and other countries. Other trademarks are property of their respective owners.

Part Number: 170650-001

8