

Smart-Light Device Mounting Options

There are various ways to mount a Smart-Light device on or near the mating connector. Some common ways include:

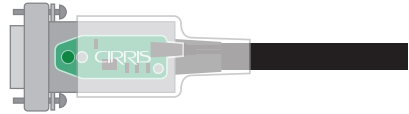
Screw Mounted

The Smart-Light device is mounted to the mating connector with the screws provided.



Clear Heat Shrink

If mounting the Smart-Light device to the mating connector with heat shrink or self-fusing silicone tape, be sure that the material is clear as to maximize visibility of the Smart-Light device LED.



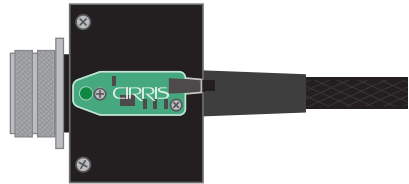
Tie Wrap

A Smart-Light device can be securely mounted to a connector cable using tie wraps.



Easy-Wire™ Block

Mounting the mating connector and Smart-Light device on an Easy-Wire block allows the mating connector to be easily placed and removed from a grid tile surface, such as the Panduit Quick-Build™ Grid Tile system.

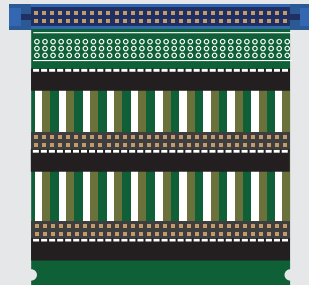


Tester Connector Options

If you don't have an existing tester connector, consider Cirris Header Strip transition boards. They can be mounted alongside each other to create a continuous test strip.

The connectors that plug into the Header Strip can be sized to requirements. This allows you to make fixturing cables for a specific mating connector without wasting test points.

Visit www.cirris.com for more information.

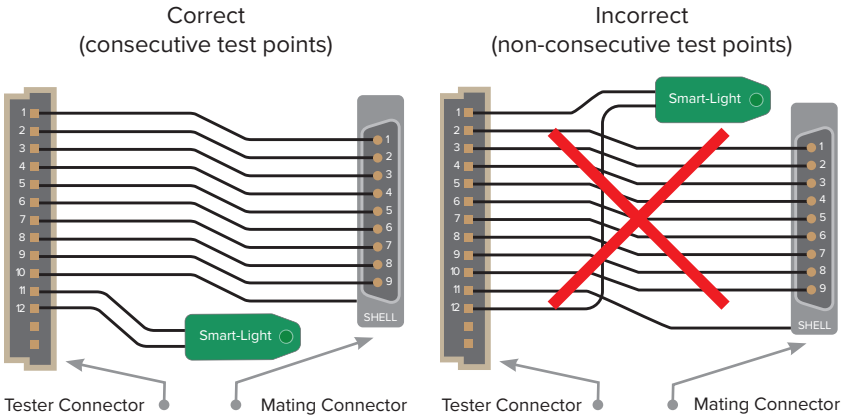


Header Strip

Making a Smart Adapter

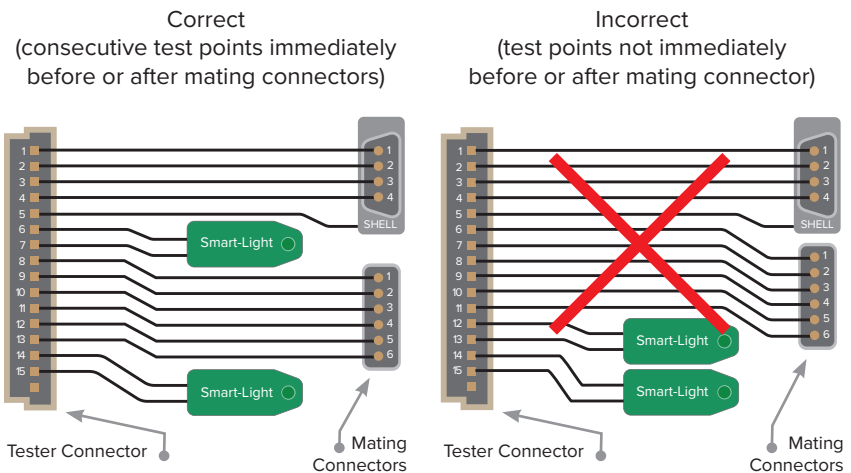
How to Wire a Smart-Light Device

Two extra test points are required to make a smart adapter. The two test points must be located immediately before or after the associated mating connector and they must be consecutive test points. Either of the two test points can be connected to either termination on the Smart-Lights device. Note that the order in which test points are wired to the mating connector can be random and need not be sequential as shown.



Multiple Mating Connectors

If multiple mating connectors are wired to one tester connector, it is possible to have one Smart-Lights device for each mating connector following the same rules.

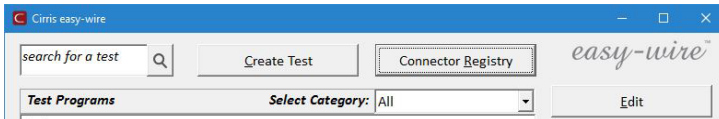


Registering a Smart Adapter

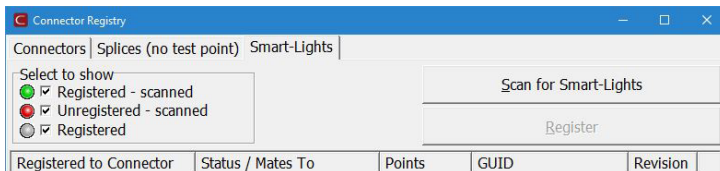
Before using a smart adapter, it must be registered in the Cirris Easy-Wire Software database that is accessed by the tester. If you have multiple cable testers, consider using a shared network database so that the smart adapters registered on one tester will automatically work on another. If each tester accesses its own local database, you will have to export and import the registrations from one tester to another.

Register a Smart-Light Device

1. Connect the smart adapter to the tester's interface.
2. From the Easy-Wire main menu, click Connector Registry.



3. Make sure there is a connector available for the Smart-Light device. If needed, create one under the Connectors tab.
4. Under the Smart-Lights tab, click Scan for Smart-Lights.
5. Click the unregistered Smart-Light device in the Smart-Light list. The actual Smart-Light device should light up red.



6. Click Register and complete the probing process.



401 North 5600 West
Salt Lake City, UT 84116

1-801-973-4600
www.cirris.com

2021.4.0