



CR

Getting Started Guide

To download software, the *CR User Manual*, and other supporting documentation scan the QR code here or on the tester to visit downloads.cirris.com.



Getting Started

The PC-controlled CR system can perform a wide variety of electrical tests including low voltage continuity, isolation, and passive component testing. The unit can be used as an end-of-line tester, but also excels as a test-while-you-build, guided assembly aid with graphic, textual, and audible instructions.

This Getting Started Guide is intended to help the new user set up the tester, install the Easy-Wire software, and power up the system. For further information, including test fixture design considerations and programming guidance, see the Easy-Wire Help installed with the software and the *CR User Manual*.

Symbols

Used on the tester and in this guide:



Alerts users to a risk of personal injury or damage to the equipment.

Intended Use



Cirris CR systems are designed for electrical testing and are intended to be used indoors, in a dry environment, at a temperature of 50-104 degrees Fahrenheit (10-40 degrees Celsius) at less than 70% relative humidity (non-condensing).

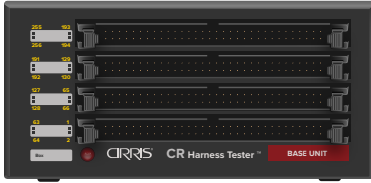
No User-Serviceable Components



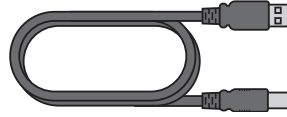
The tester includes no user-serviceable components. Attempting repairs or altering the tester in any way voids the warranty and may lead to an unsafe condition. Contact Cirris Technical Support for assistance if needed.

In the Package

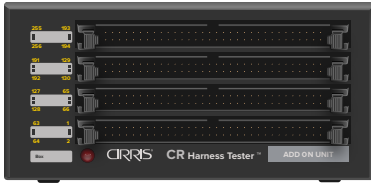
Base Unit



USB Cable



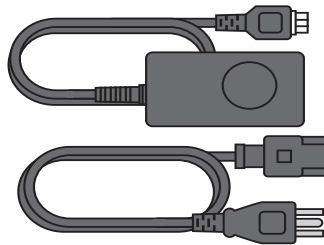
Optional Add-on Scanner/Cable



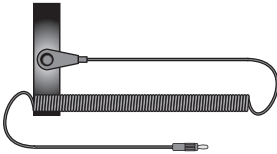
Probe



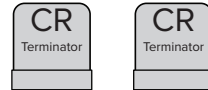
Power Supply



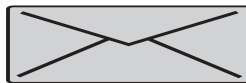
Wrist Strap



Terminators



Certificate of Calibration



The following optional items may also have been included:

- Booster Unit & Cable
- Smart-Lights devices
- Transition Boards
- Tester mating connectors
- Tester mating cables
- PC Controller

The CR system is controlled by the Easy-Wire software installed on a PC, which must meet the following requirements:

- Windows 10 operating system
- 2.0 GHz min. processor speed
- Free USB 2.0 or 3.0 port
- 15 GB min. free hard drive space
- 4 GB min. RAM
- 256 MB min. video memory
- 1024 x 768 min. display resolution
- Sound (for audible feedback)
- Internet connection - not required for normal use but it is required to download software and it can facilitate technical support

Assembling the System

CR systems that include Add-on Scanners are designed to be stacked with the Base Unit on the bottom. The Base Unit can support up to 7 Add-on Scanners. Each Booster Unit can support an additional 7 Add-on Scanners. Only Base Units and Booster Units have an AC power input. Larger systems can be mounted in 19" (482.6 mm) electronics cabinets or distributed.

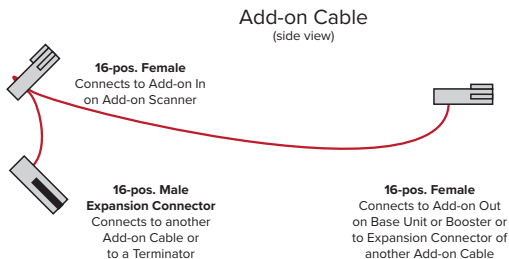
Standard Add-on Cables accommodate the typical stacking configuration. Custom length Add-on Cables and rack-mount panels are required to install a CR system in a cabinet. In a distributed configuration, in which the scanner enclosures are separated from the Base Unit and/or from each other, custom length Add-on Cables are required. In distributed systems the connecting Add-on/Booster Cables cannot exceed 200 feet (60 m) total length.



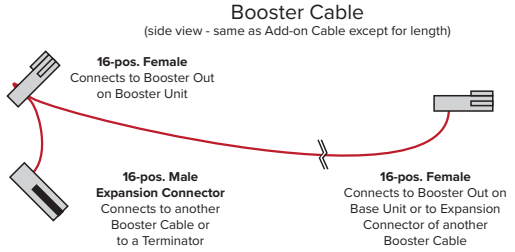
If the system consists of only a Base Unit, skip to Step 5, otherwise begin with Step 1.

On the Rear Panel

1. Connect an Add-on Cable from **Add On Out** on the **Base Unit** to **Add On In** on the first Add-on Scanner.
2. To connect additional Add-on Scanners, continue the daisy-chain by connecting an Add-on Cable to the Expansion Connector on the original cable and repeat the process for a maximum of 7 Add-on Scanners.

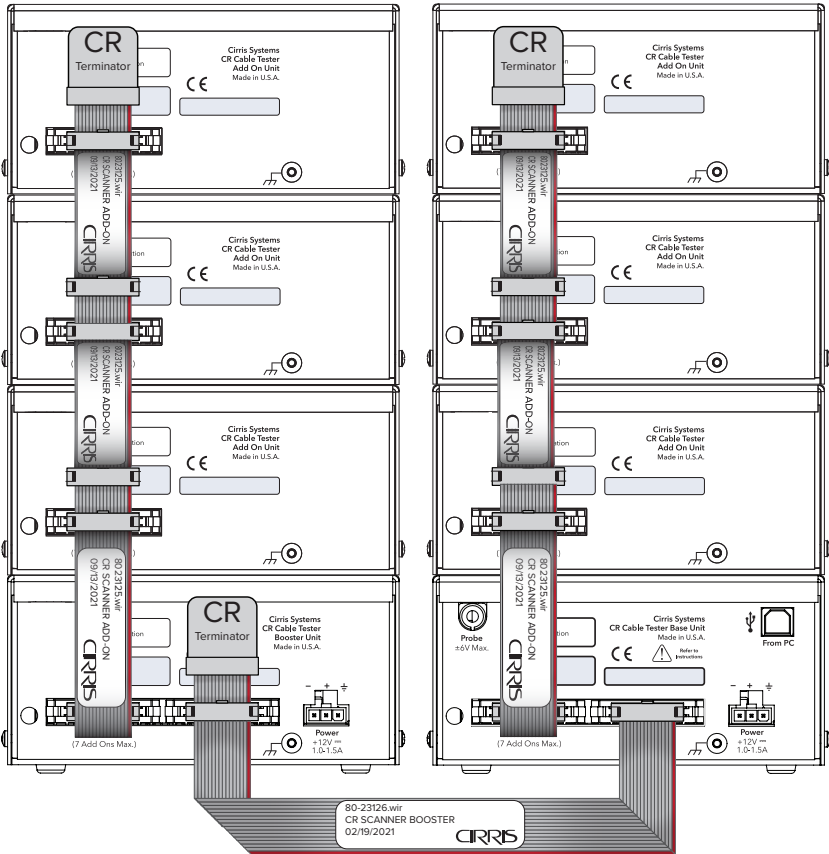


- For larger systems, connect a Booster Cable from **Booster Out** on the Base Unit to **Booster Out** on a Booster Unit. Connect Add-on Scanners to the Booster Unit as described for the Base Unit.



- After all the Add-on Cables are installed, place a terminator on the open connector at the end of the Add-on daisy-chain(s) and Booster daisy-chain(s).
- Place a terminator on the Base Unit **Add On Out** and/or **Booster Out** if either or both is unused - for example if the system consists of only a Base Unit.

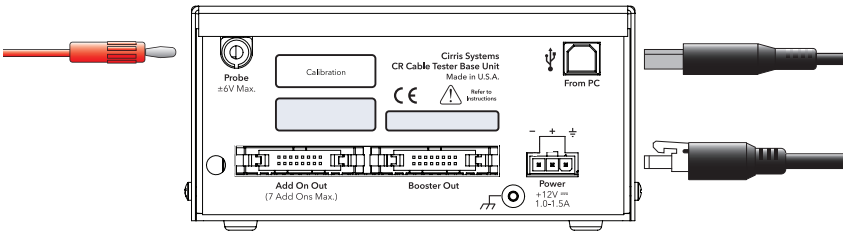
Steps 1 - 5



On the Rear Panel of the Base Unit

6. Connect the **Probe** to the Probe receptacle.
7. Insert the USB Type B connector of the supplied USB cable into the **From PC (USB)** port and connect the other end to a USB port on the PC controller.
8. Connect the **Power Supply** to the power receptacle on the **Base Unit** and to all **Booster Units** included in the system. Plug the power cord(s) into a surge-protected power strip and plug the power strip into a grounded power outlet. The CR Power Supply will automatically adjust to AC input from 100 - 240 volts AC, 50-60 Hz.

Steps 6 - 8



Install the Software

Easy-Wire Station Software

The purchase of a new CR tester includes the latest version of the Easy-Wire Station software. The installation file for the software can be downloaded from the Cirris web site by scanning the QR Code on the tester or at **downloads.cirris.com**.

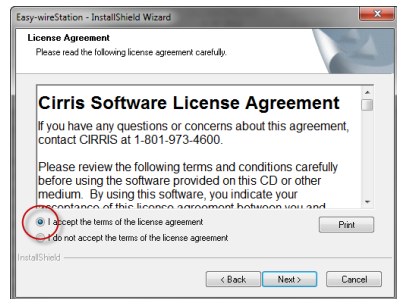
Cirris Server Software

If connecting the new CR station test station to a server using the Cirris Server Software, all the connected test stations and the server software must be the running the same software version. See the *Cirris Server Software Installation Guide* for instructions on installing the server software and for connecting test stations to the server database.

Easy-Wire Station Installation

The installation of the Easy-Wire station software is a straightforward process which can be accomplished by following the on-screen instructions.

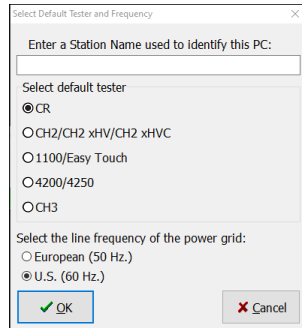
1. Close all open applications.
2. Open the Easy-Wire Installation and follow the on-screen instructions.
3. Depending on circumstances several messages may be displayed during the process including a request to install third-party drivers. Select **OK** to continue with these required steps.
4. When prompted, read the Easy-Wire Software License Agreement and accept the terms to continue the installation. Click **Next**.



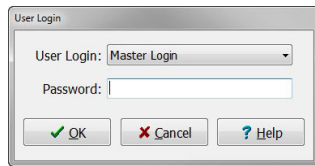
5. A "Read-Me" file will open that details the software's revision history. This file can be reviewed and/or saved as desired.
6. At the end of the installation click **Finish** to complete the process. A shortcut for the Easy-Wire application is placed on the Windows desktop.



1. There are no power switches on the CR hardware. If properly connected to power and to the PC Controller, the system will wake when the Easy-Wire software opens.
2. Open the Easy-Wire software by double-clicking on the desktop icon. If the icon can't be found, from the Windows task bar, click Start > Cirris Systems Corporation > Easy-Wire.
3. The first time the Easy-Wire software is opened, the user is prompted to enter basic information about the test station.
 - a. Enter a Station Name (the name is used in reports). The name can be changed later from the **Main Menu > Utilities > Setup System Options > Station Name** tab.
 - b. Select **CR** as the tester type
 - c. Select the frequency of the AC power (Mains) input to the system
 - d. Click OK



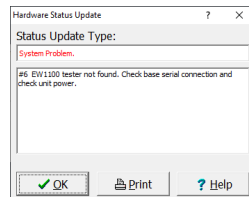
4. When the **User Login** window opens, select **Master Login** from the drop down list. Do not enter a password. Click **OK**



Passwords and new users can be created from the **Main Menu > Utilities > Setup Security**. See the Easy-Wire Help.

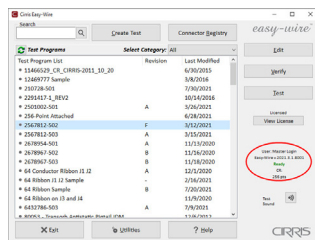
5. If the **Hardware Status Update** window opens, click **OK**.

This window is normally displayed when opening Easy-Wire after a new installation or when any changes are made to the hardware or software.



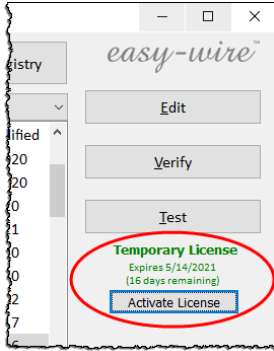
6. The Easy-Wire Main Menu will open.

The tester performs a series of self-tests during initialization. These tests ensure that the hardware and software are working properly. When the self-test passes, the Main Menu will open with a **Ready** status indicator.



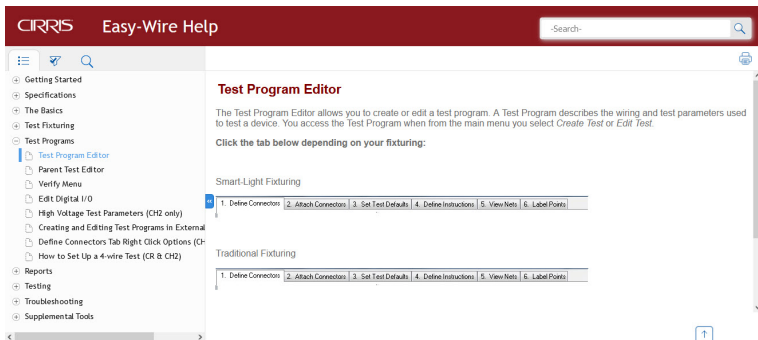
Activate the Software License

After performing a new installation, the Easy-Wire software will be fully functional for 21 days. During this period, the Main Menu displays the license status **Temporary License**. If the software license is not activated before the end of this time, the software will enter an **Edit Only** mode, which supports editing functions, but which does not support tester control. To maintain full functionality, the software license must be activated. A video describing the license activation process is available at activate.easy-wire.com. Detailed instructions for the process can be found in the Easy-Wire Help by searching *License Manager*.



Accessing the Easy-Wire Help

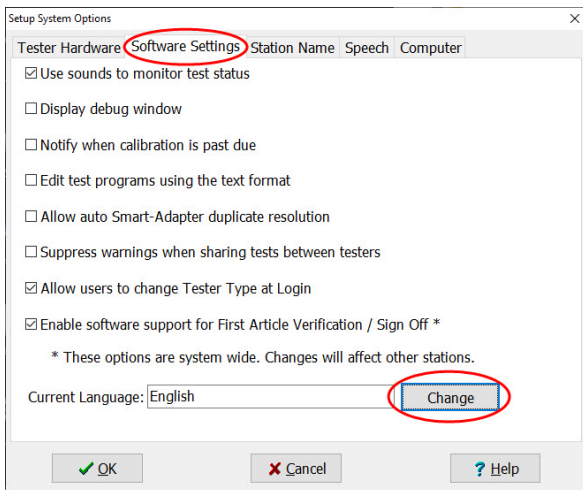
The Easy-Wire software includes a contextual Help system accessible by clicking on the Help button available on each Easy-Wire window. The Help can be browsed using its Table of Contents or searched by keywords.



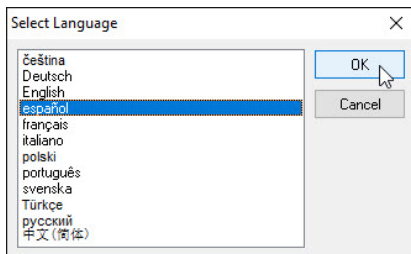
Changing the Interface Language

The language used in the Easy-Wire interface can be changed to one of the available options.

1. From the **Main Menu > Utilities > Setup System Options**.
2. Under the **Software Settings** tab, select **Change**.



3. Select a language from the list of options and click **OK**.



4. Click **OK** on the **Setup System Options** window to return to the **Main Menu**.

Calibration

New Cirris testers ship with a Certificate of Calibration valid for one year. Cirris recommends that the calibration be validated annually at a minimum thereafter. The validation can be performed by Cirris or by the end user or a calibration service provider using a CR Performance Verification Kit. Contact your Cirris sales representative for more information.

Documentation

In addition to this Getting Started Guide, there are several resources that provide important information about the test system and its operation. The Easy-Wire Help is installed with the software. Software, manuals, and other documentation can be downloaded from the Cirris web site at downloads.cirris.com or by scanning the QR code on the tester.

- **CR User Manual** - Provides important additional information about building test fixtures and developing test programs.
- **Easy-Wire Help** - The Easy-Wire software includes an integrated Help system that provides contextual assistance accessible throughout the application.
- **Cirris Server Software Install Guide** - Describes the Cirris Server Software installation and how to connect a test station to the server.
- **Smart-Lights Quick Start Guide** - Includes instructions for setting up the optional Smart-Lights intelligent devices. Programming instructions can be found in the Easy-Wire Help.

Help / Support

For assistance with your Cirris test system:

- Visit www.cirris.com/learning-center to read articles about Cirris products and other testing subjects.
- Visit the Cirris YouTube channel to find instructive videos.
- In the United States, contact our technical support team at techsupport@cirris.com or by phone at 801-973-4600, ext. 666 (or ask for Tech Support).
- Outside the United States, visit the contact page at www.cirris.com to find your local Cirris representative.

Warranty

Cirris Inc. warrants new products manufactured by Cirris Inc. to be free from defects in material and workmanship for a period of twelve months. Products not manufactured by Cirris Inc. are warranted by their manufacturer. Cirris Inc. at its option will repair or replace faulty goods and is not responsible for any consequential loss incurred due to faulty goods. This warranty does not cover normal wear, misuse or consumable items. The warranty does not include modifications or damages due to abuse by the user.

NO WARRANTY AGAINST INFRINGEMENT: Cirris Inc. makes no warranty whatsoever that the goods are delivered free of any rightful claim of any third person for infringement of patent.

The logo for Cirris, Inc. features the word "CIRRIS" in a bold, serif font. The letters are dark red. A registered trademark symbol (®) is located at the top right of the letter "S".

Cirris, Inc.
401 North 5600 West
Salt Lake City, UT 84116
USA

1-801-973-4600
www.cirris.com

2022.4.0