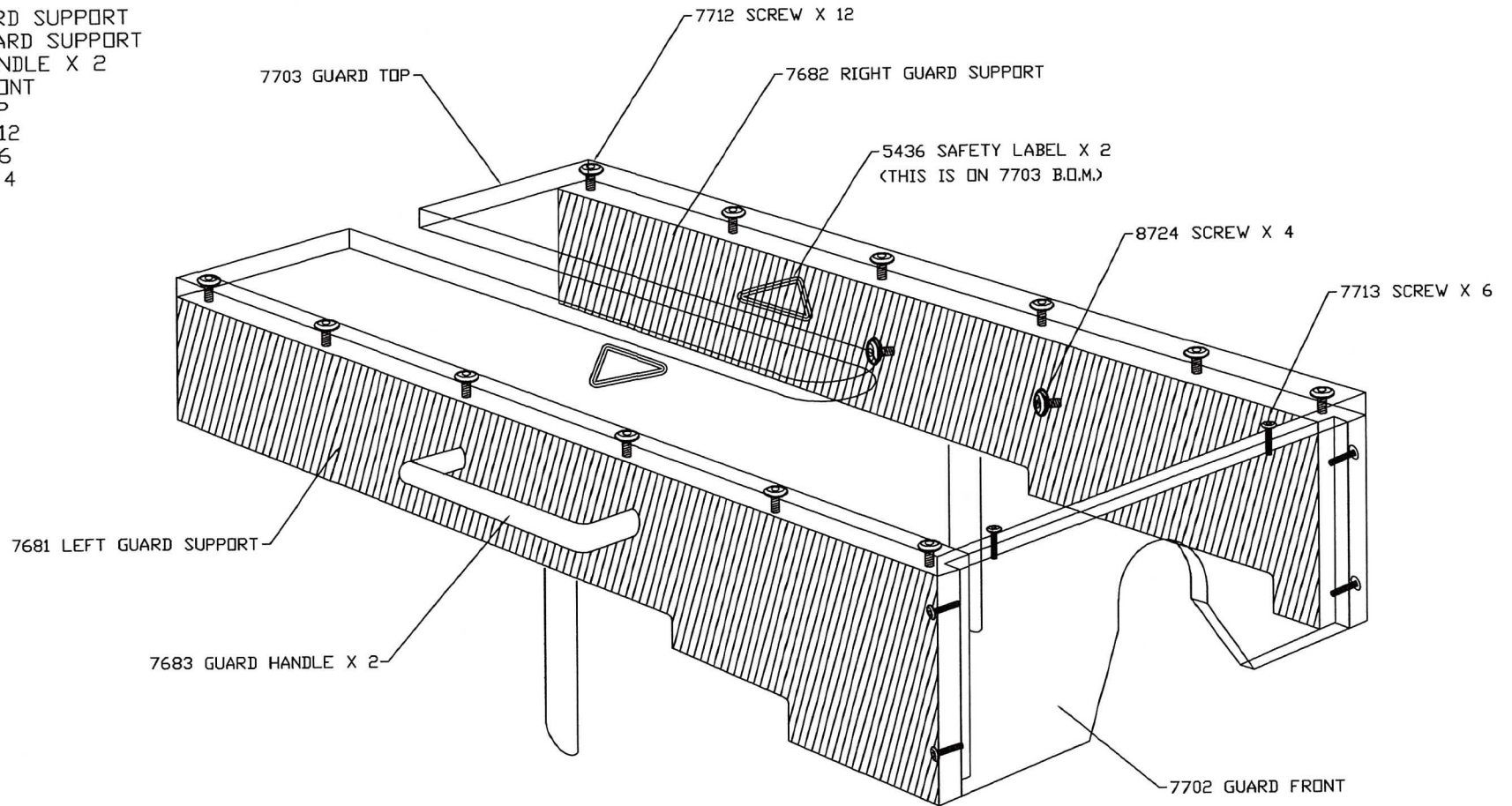


DRAWING NO.	TITLE	MODEL(S) USED ON	DATE	DR. BY	CARPENTER MFG.CO.,INC	REVISION	DATE	BY
7709	GUARD ASS'Y	M77D, M77E	7/13/2020	A.M.	MANLIUS, N.Y. 13104 USA	A		

SHEET 1 OF 1

MAT'L DESC.

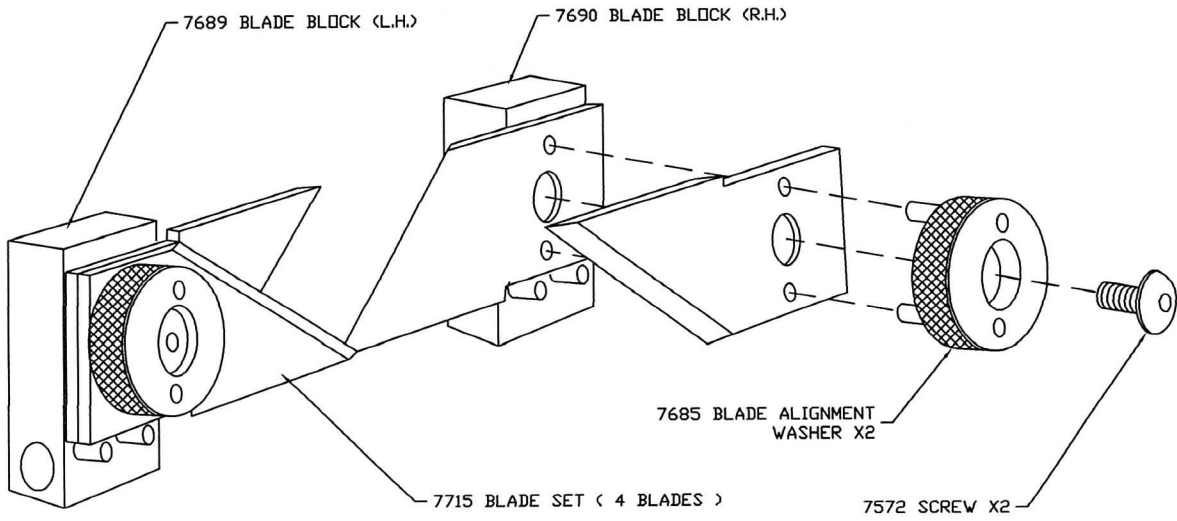
- 7681 LEFT GUARD SUPPORT
- 7682 RIGHT GUARD SUPPORT
- 7683 GUARD HANDLE X 2
- 7702 GUARD FRONT
- 7703 GUARD TOP
- 7712 SCREW X 12
- 7713 SCREW X 6
- 8724 SCREW X 4



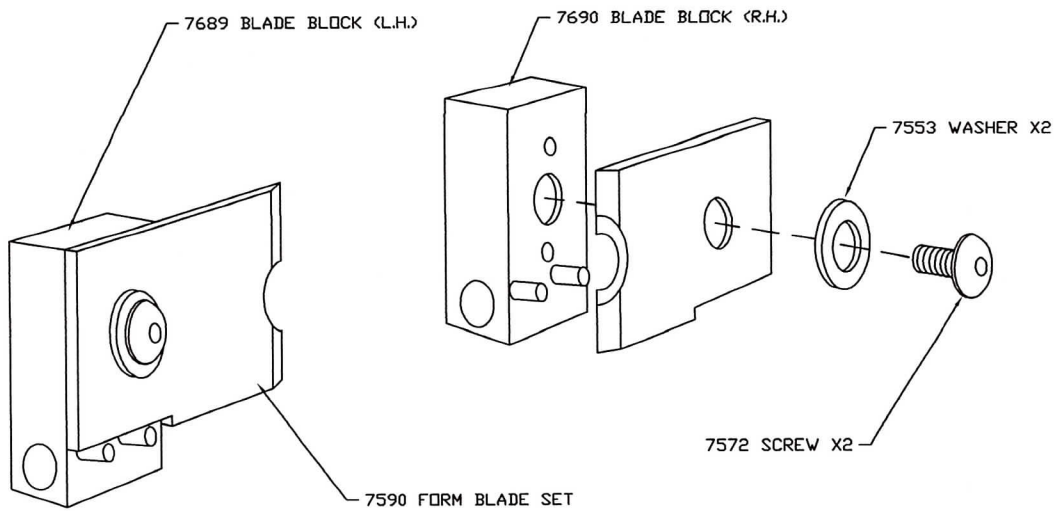
UNLESS OTHERWISE SPECIFIED ALL DIM'S ± .005, ALL ANGLES ± 1°

M77E CABLE STRIPPER

V-BLADE INSTALLATION

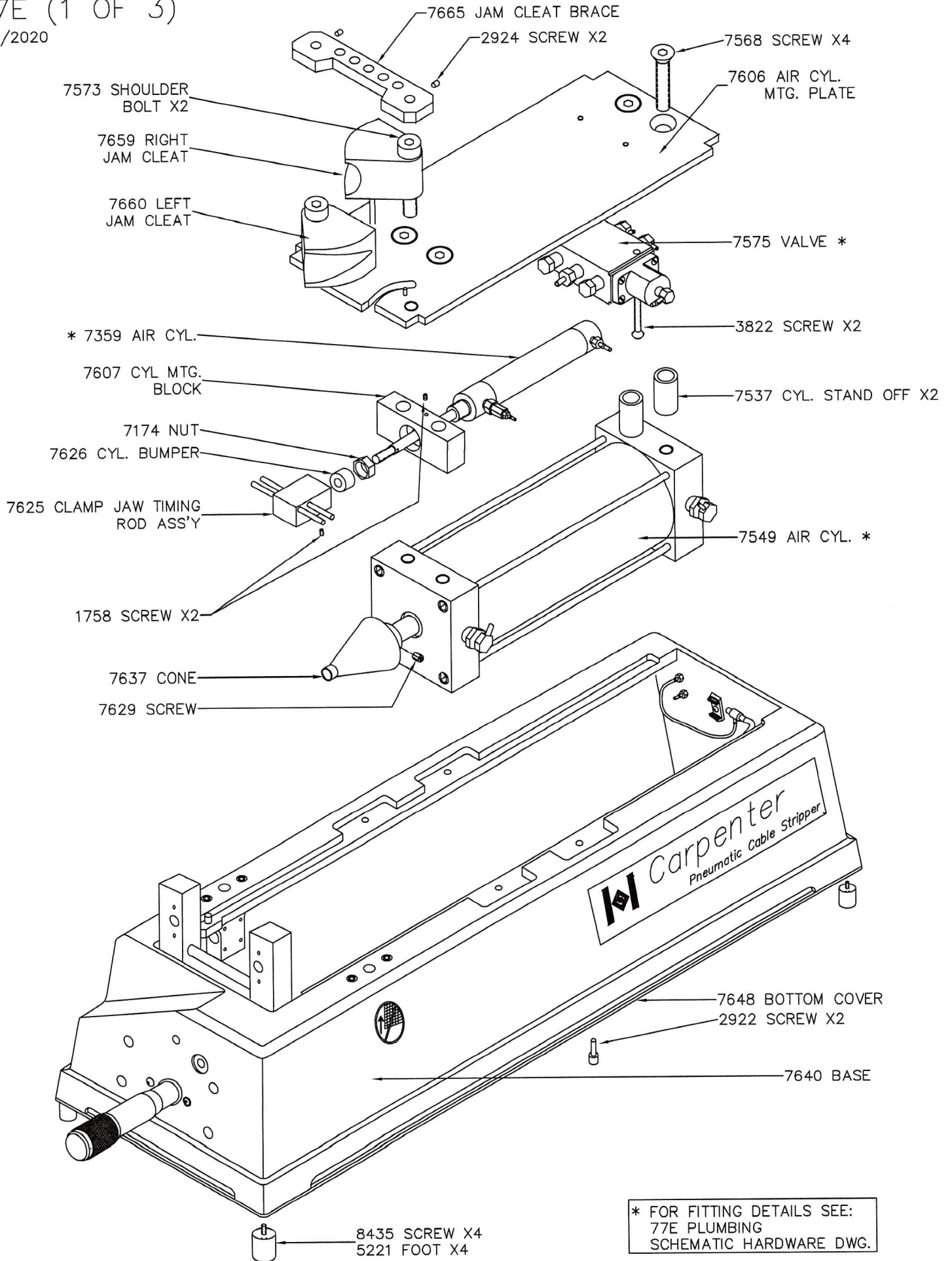


FORM BLADE INSTALLATION



M77E (1 OF 3)

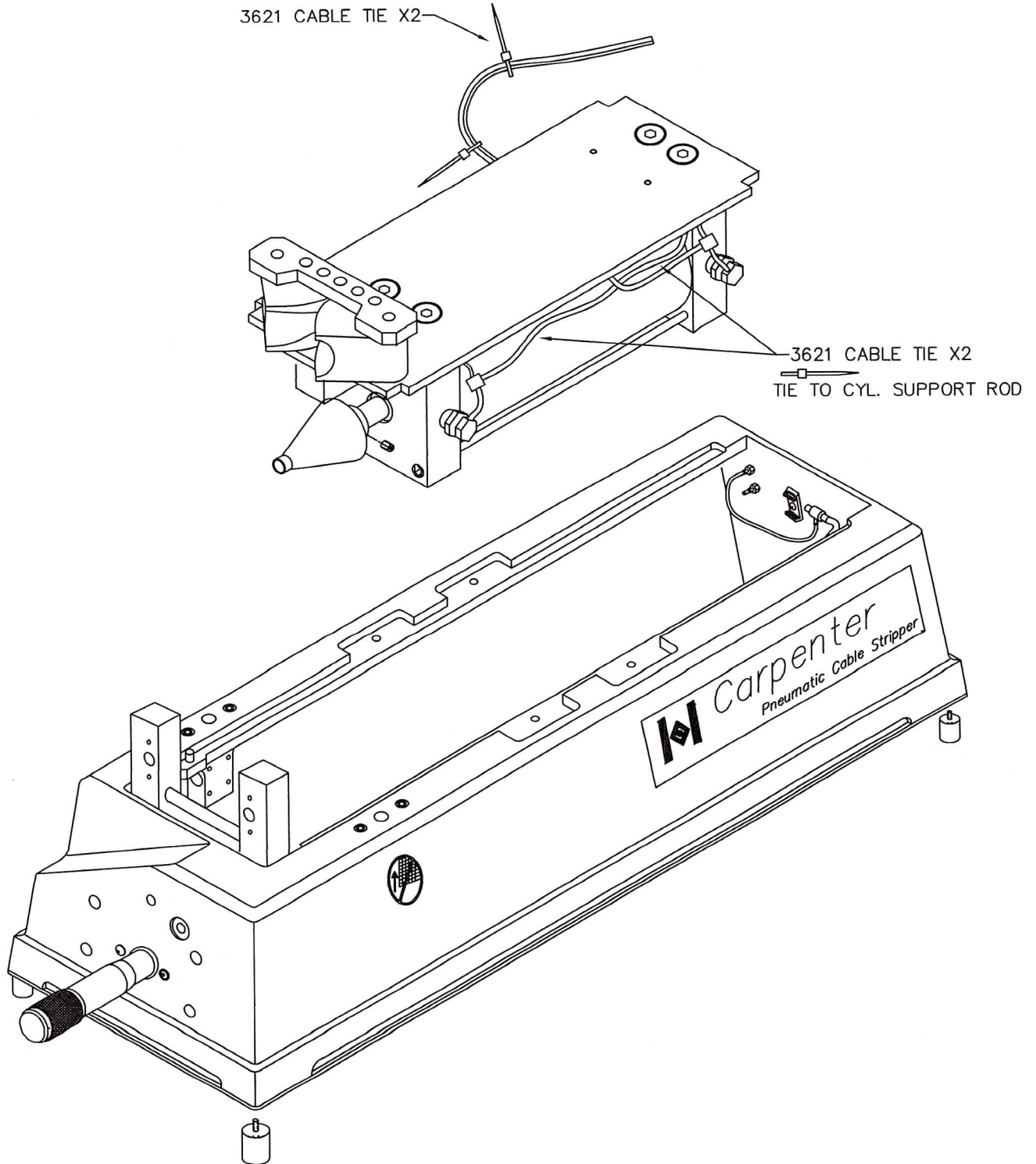
7/13/2020



M77E (2 OF 3)

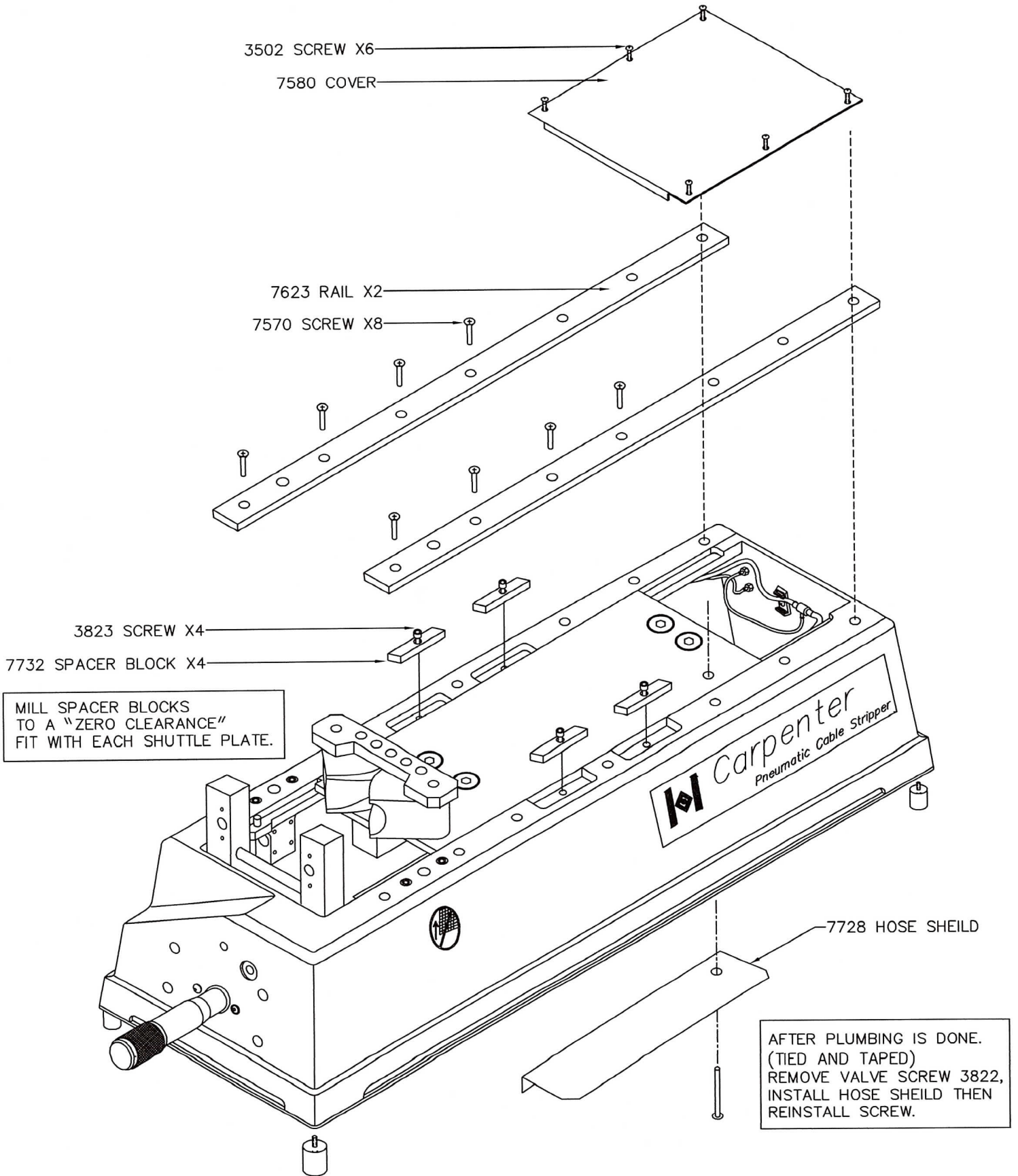
7/2/14

FOR DETAILS ON LINE HOOK UP SEE:
77E PLUMBING SCHEMATIC
LINE LENGTHS DWG.

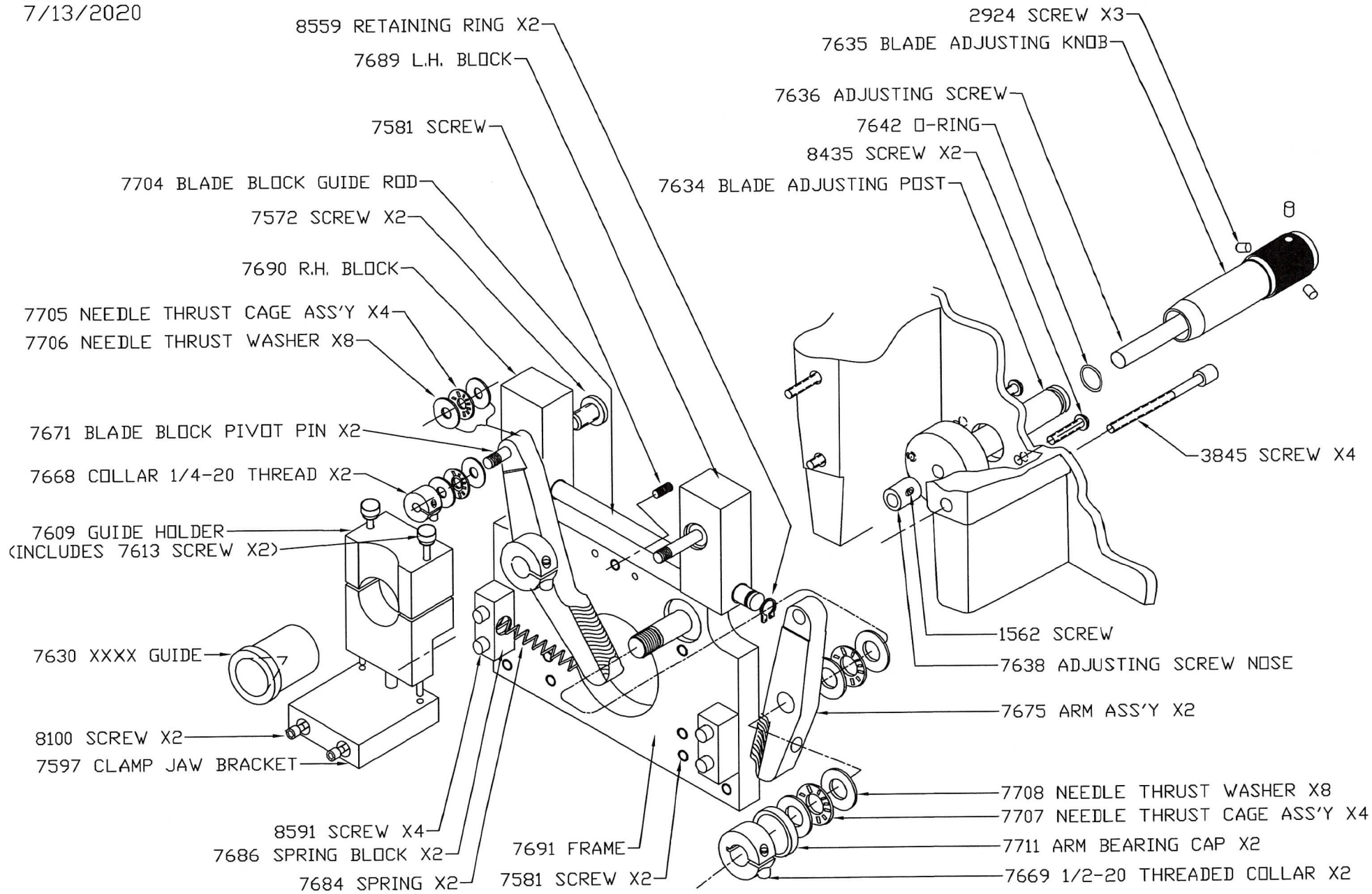


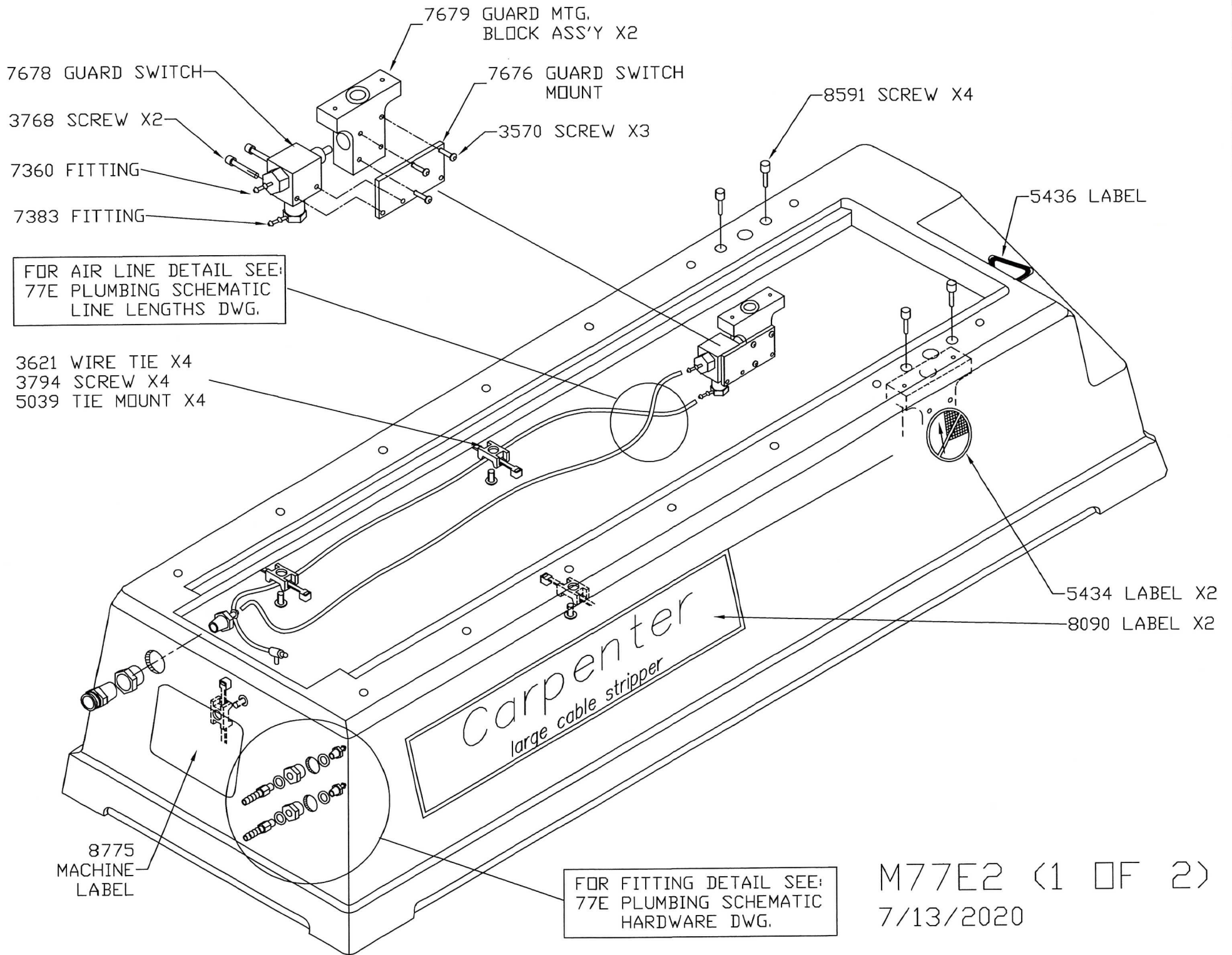
M77E (3 OF 3)

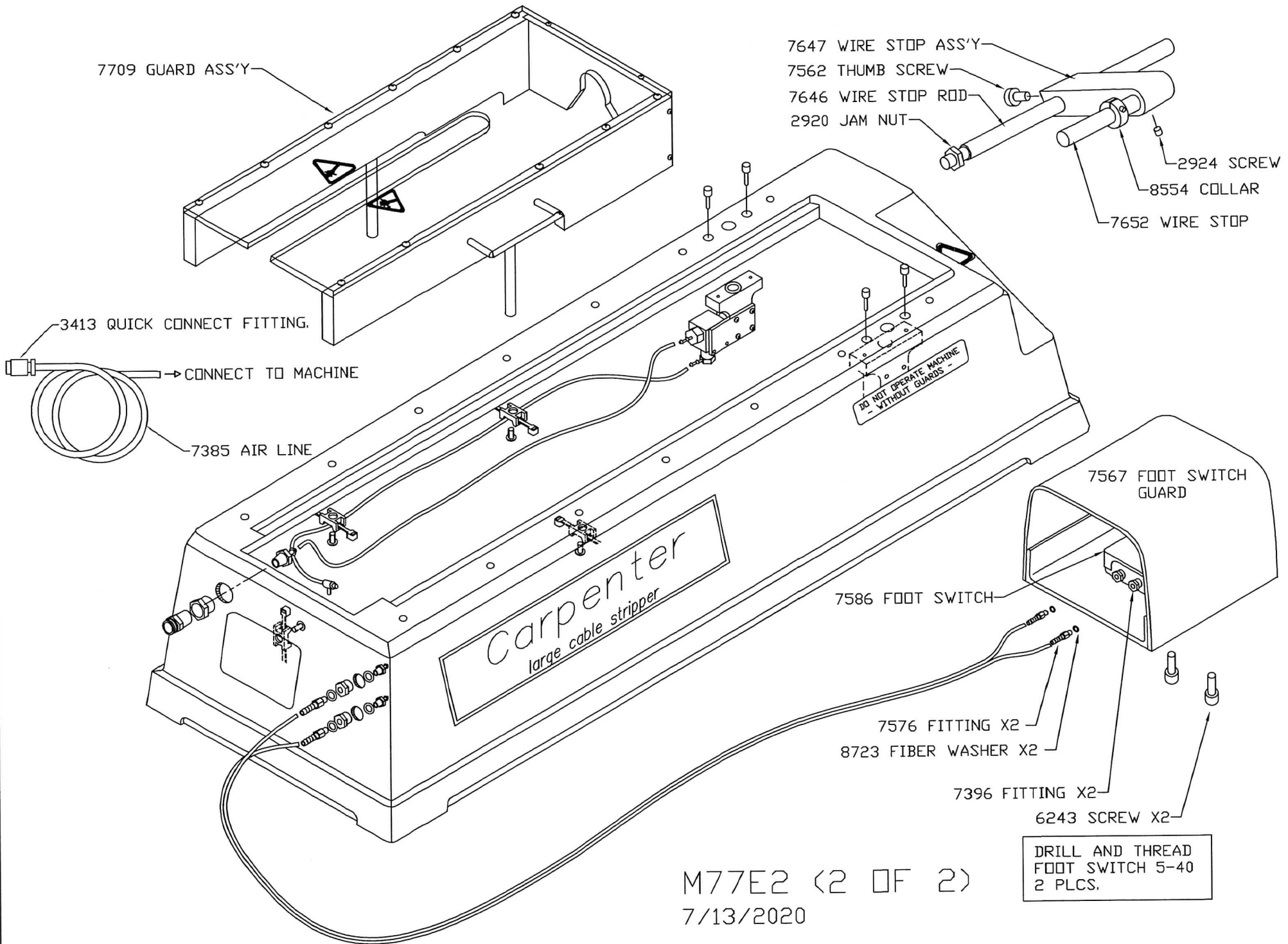
7/2/14

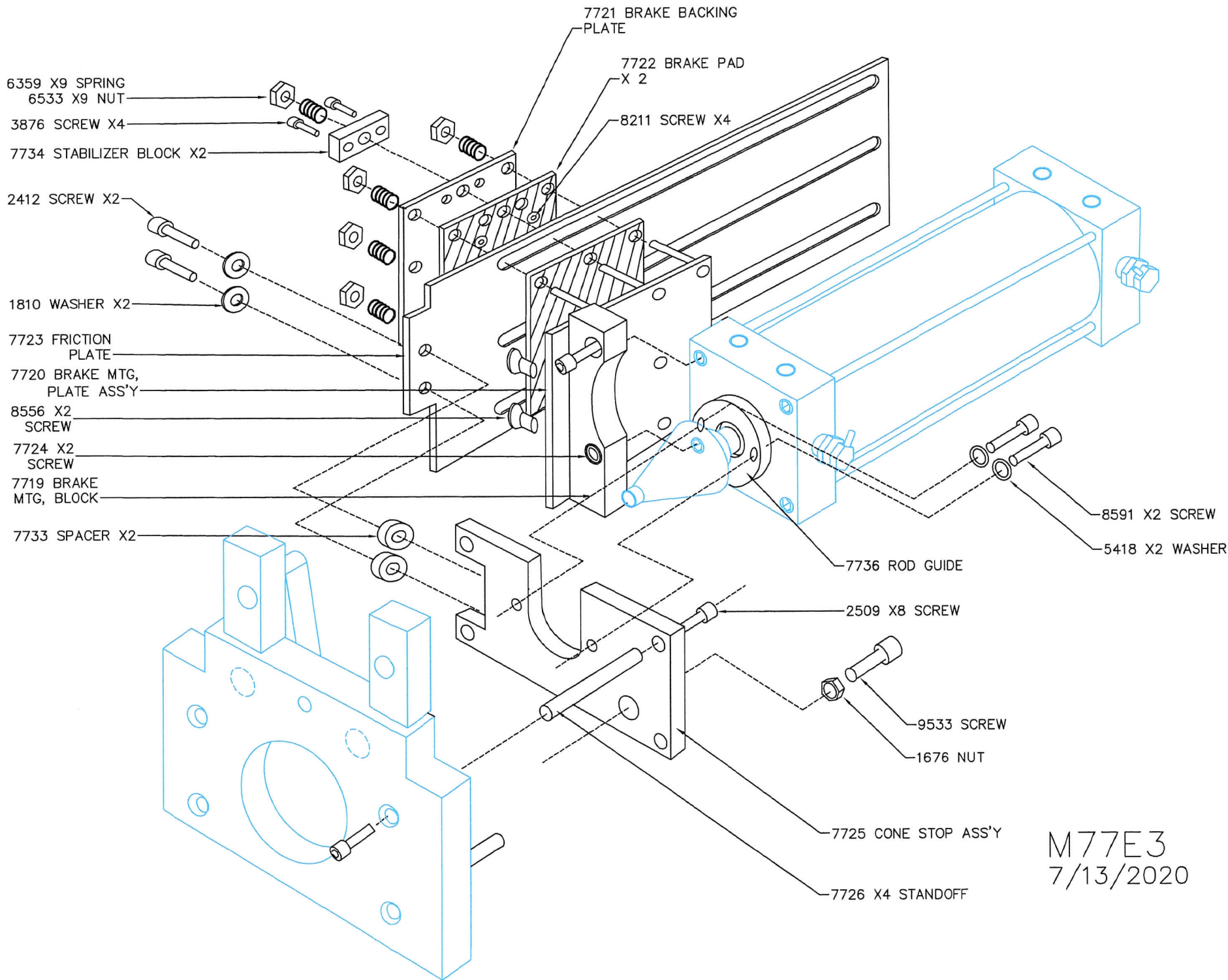


M77E1
7/13/2020





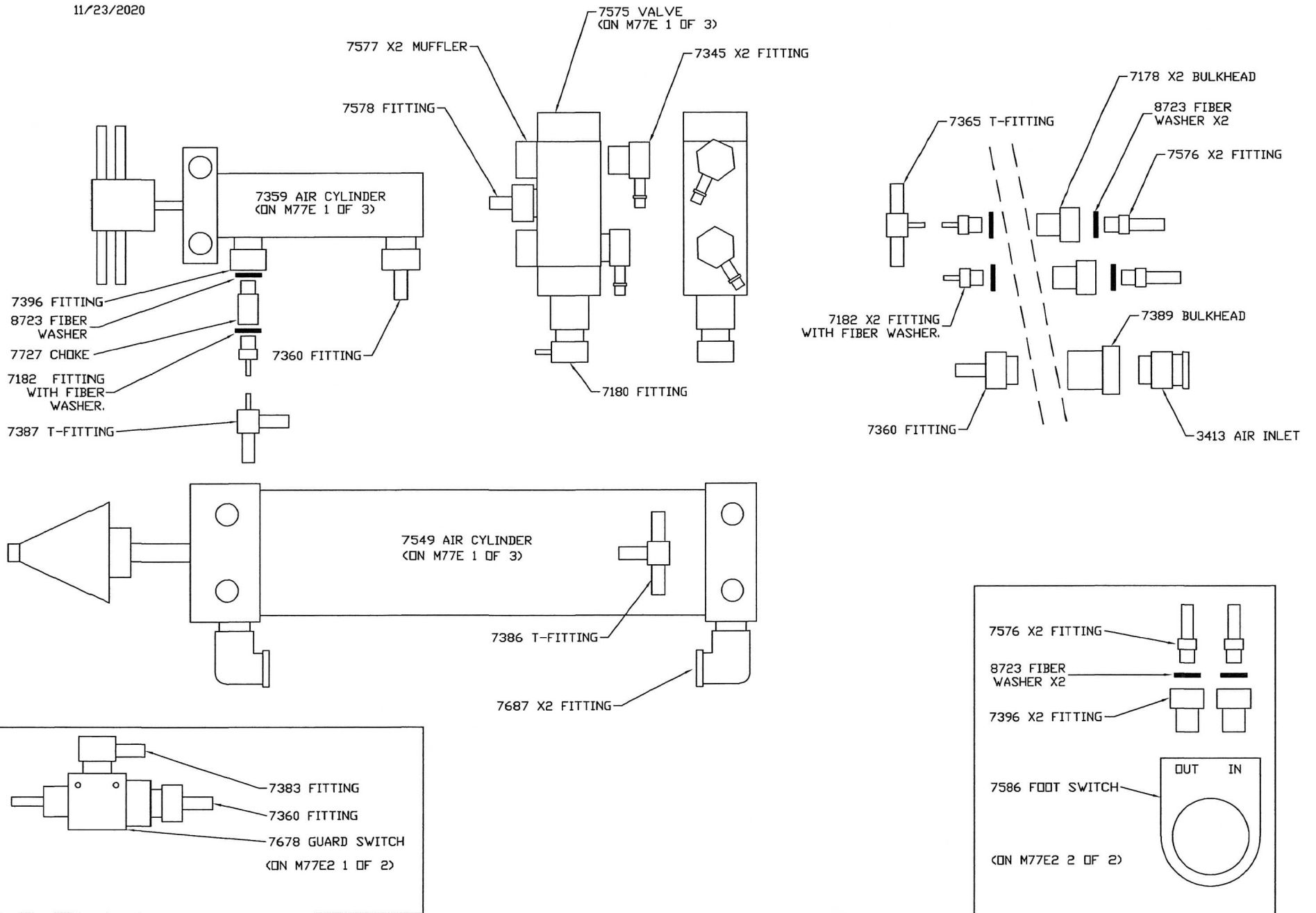




M77E3
 7/13/2020

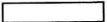


77E PLUMBING SCHEMATIC HARDWARE

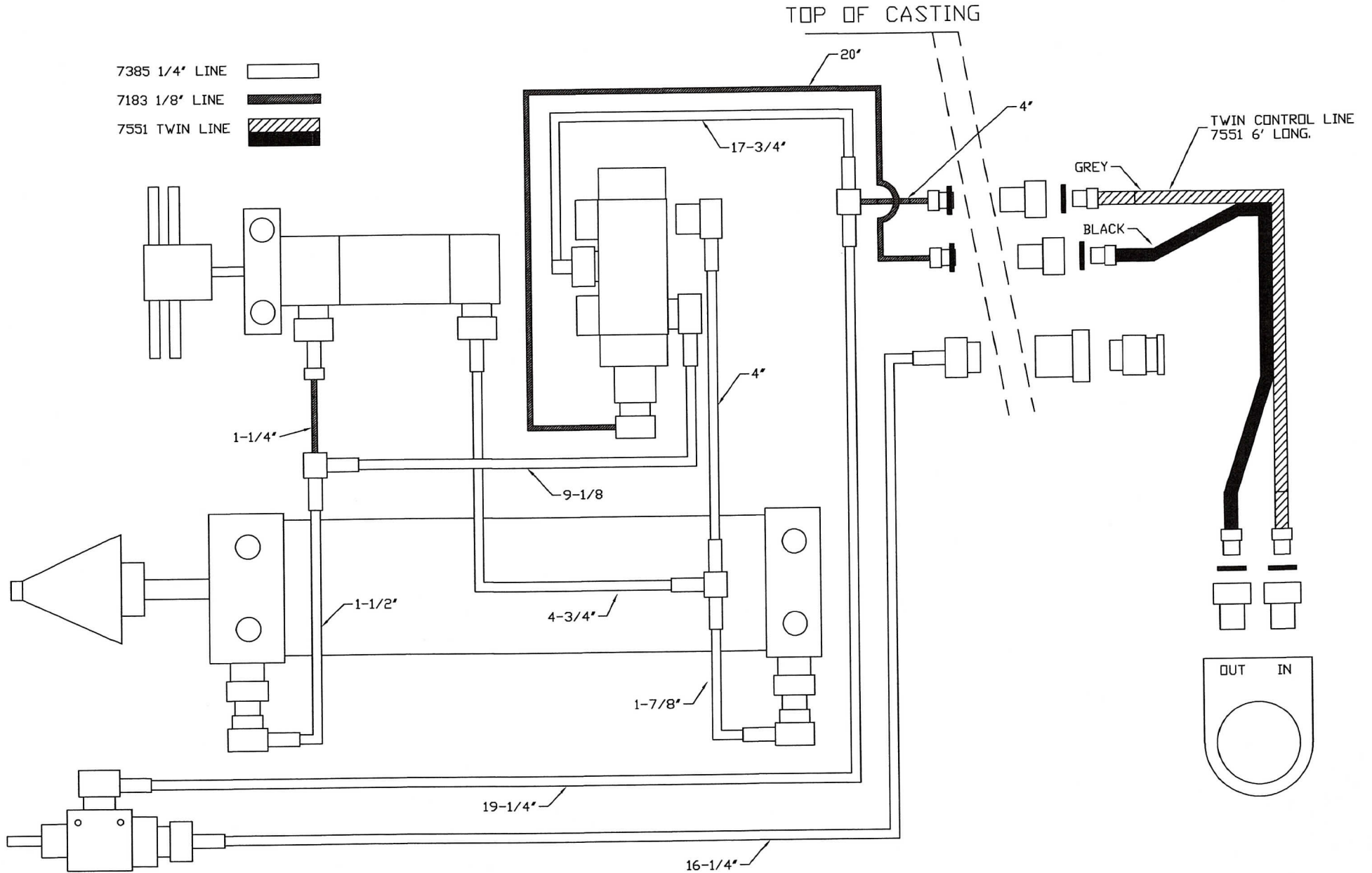
11/23/2020



77E PLUMBING SCHEMATIC LINE LENGTHS

7/13/2020

- 7385 1/4" LINE 
- 7183 1/8" LINE 
- 7551 TWIN LINE 



M77E CONE SET UP.

