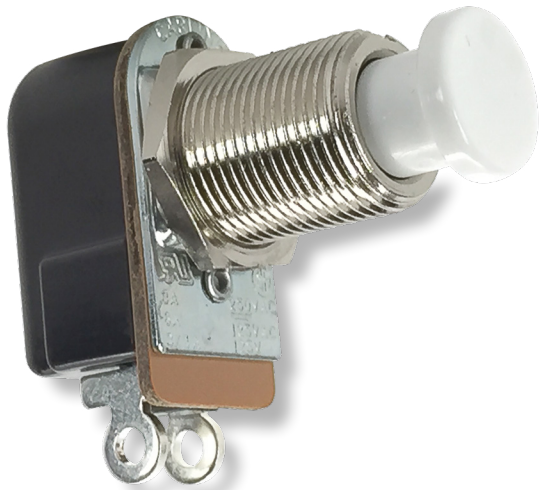


# P27-Series

Pushbutton Switches

**PRODUCT WEBPAGE**

*request sample, configure part*



The P27-Series pushbutton switches are single pole, AC rated switches suitable for general purpose applications with a shallow back panel. These switches are momentary action with a medium actuation force (26 oz. typical). The P27-Series switch is equipped with a slow-make, slow-break contact mechanism, rated at 6 amps with a nylon concave pushbutton.

<b>1</b>	<b>3-6</b>	<b>125-250</b>	<b>125</b>
Pole	Amps	VAC	VDC

## Typical Applications

- Intercoms
- Security System
- Electronic Signs
- Marine

# Tech Specs

## Dielectric Strength

UL/CSA: 1000V - live to dead metal parts

## Electrical Life

25,000 cycles

## Operating Temperature

32°F to 185°F (0°C to 85°C)

# Ordering Scheme

Sample Part Number P27A - BL

Selection 1 2

### 1. SERIES

<b>Single Pole</b> 3A 250VAC, 6A 125 VAC, 3/4A 125V Off - (On) On - (Off)	Solder Lug P27A P27L	.250 Tab P27B -	Wire Leads P27F P27T
--	----------------------------	-----------------------	----------------------------

### 2. BUTTON STYLE / COLOR

<b>BL</b> Black	<b>WH</b> White
<b>RD</b> Red	

Notes:  
( ) Indicates momentary function.

[Configure Complete Part Number >](#)

[Browse Standard Parts >](#)

# Dimensional Specs

inches [millimeters]

