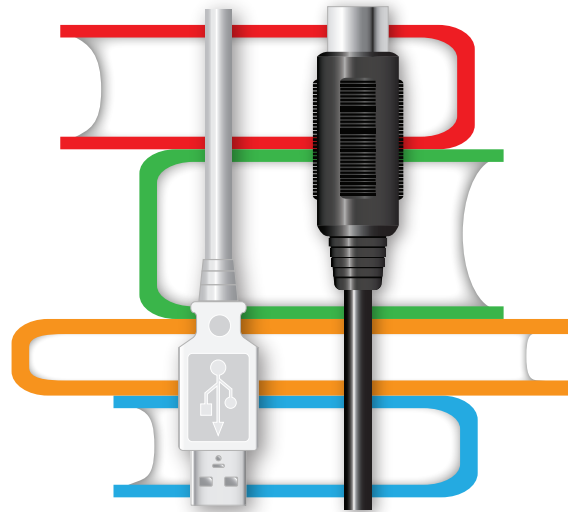


Roland's Librarian Software



© 2010 Roland Corporation U.S.

Windows XP™, Windows Vista™, and Windows 7™ are trademarks of Microsoft Corporation. Mac OS X™ is a trademark of Apple Inc. All rights reserved. No part of this publication may be reproduced in any form without the written permission of Roland Corporation U.S.

INFOCUS02

About the Roland InFocus Booklets

Roland's InFocus booklets provide important basic background information that can help you get the most out of your Roland/BOSS products. While there's always plenty to say about any one instrument, there are some topics that apply to a wide range of instruments. Each InFocus booklet discusses one of these larger topics.

For information about a specific product, check out the Roland U.S. Web site at www.RolandUS.com or the BOSS web site at www.BOSSUS.com.

About This Booklet

Many Roland/BOSS products ship with Roland's Librarian software. Use the Librarian to store your product's data on your computer, and then reload the data into your product as you need it. The Librarian unlocks the ability to really dig into a product, since it lets you save virtually unlimited amounts of product data on your computer's hard drive. If you're less ambitious, the Librarian can also simply store a backup copy of your product's User memory on your computer.

This booklet tells you how to install and use Roland's Librarian software. We're going to assume you know how to use your computer—if you don't, please consult its documentation.

Understanding the Symbols in This Booklet

Throughout this booklet, you'll come across information that deserves special attention—that's the reason it's labeled with one of the following symbols.



A note is something that adds information about the topic at hand.



A tip offers suggestions for using the feature being discussed.



Warnings contain important information that can help you avoid possible damage to your equipment, your data, or yourself.

Hot Links

Each InFocus booklet is meant to be read in order from beginning to end. However, if we mention an upcoming section—and you see this arrow—you can click the arrow to jump there immediately.



What Is the Librarian?

The Librarian is a computer-based application that loads data from a Roland/BOSS product for organization, and then storage on your computer. The data can be re-loaded into the product as you need it.



The Librarian works with all sorts of things, including patches, effects, setups, and more, depending on your product. We'll use the word "data" here as a catch-all term for anything from your product the Librarian can handle. We'll also use "patch" and "item" as stand-ins for whatever individual objects your product contains.



While we're at it, sorry about our referring to your Roland/BOSS Whatever as a "product" in this booklet. It's just that we'll be discussing the use of the Librarian with too many, er, products to refer to them by name. In the product-specific instructions later in the booklet, we won't need to do this.

What the Librarian Helps You Do

The Librarian lets you

- *back up your User data*—by making a copy of it on your computer's hard drive.
- *re-arrange the order of things*—for quick selection as you use the product onstage or in your studio.
- *organize your own creations*—in ways that make sense to you.
- *create more User data than will fit in the product at one time*—by stashing it in the Librarian for organization, storage, and later retrieval.
- *work with different setups for different situations*—by stashing alternate setups in the Librarian for later use.

How the Librarian Works, Generally-Speaking

The Librarian brings all your data into “libraries.” A library is a collection of data. You can create multiple libraries, each of which contains data that you feel belongs in one clump. Each library is saved on your hard disk as a file.

You can create and save all sorts of libraries. How about a gig library containing the User data you need onstage, and a studio library for recording sessions? You could have a library of factory User patches, and have another library containing patches you’ve created, or a library of a particular project’s data, and on and on.

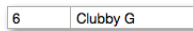
The Librarian presents each library’s data in a simple grid. Each line in the grid holds an item of some sort from your product.

A library typically contains a few different grids, one for each type of data your product holds.

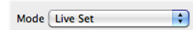


This grid shows the Fantom-G live sets in a library.

If a library has multiple grids, you can select the one you want from a Mode popup menu in its upper-left corner. The Librarian works with one type of data at a time—the one whose grid is currently visible.



Here’s a Fantom-G live set.



Within each grid, you can use copying and pasting to move things around until they’re in the order you want. We’ll discuss the actual operations you can perform in a library later in this booklet.

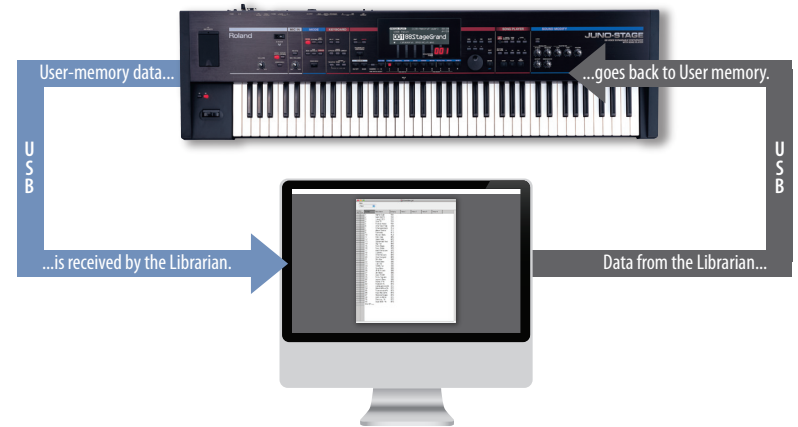
The Two Librarians

There are two types of Librarian: the “live Librarian” and the “offline Librarian.” (We just made these names up; you won’t see them anywhere else.) If you’re not clear on the type of librarian your product uses, see the product-specific section later in this booklet.



The Live Librarian

The Librarian for most Roland/BOSS products exchanges data with a product’s User memory in realtime using USB or MIDI connection. This allows you to preview patches and so on from within the Librarian. You can also grab and return product data instantly as you work in a live Librarian.



In the illustration above, we’re showing a live librarian that uses a USB connection. The Librarian for your product may use a USB connection, a MIDI connection, or offer you a choice of either option.



The live Librarian exchanges data with your product’s User memory. If your product uses a memory card—instead of a USB memory stick—the card’s data must first be copied into your product’s User memory to be exchanged with the Librarian.



You don't *need* to know this under-the-hood info to use the Librarian, but for those who like tech details: The Librarian works by exchanging MIDI SysEx data with your product. To learn about MIDI, you can check out our *An Introduction to MIDI InFocus* booklet, which you can download by clicking [here](#).

Using a USB vs a MIDI Live Connection

If your Librarian offers a choice of either a USB or MIDI connection, you'll have to make a choice as to which works best for you. Here are the plusses and minuses:

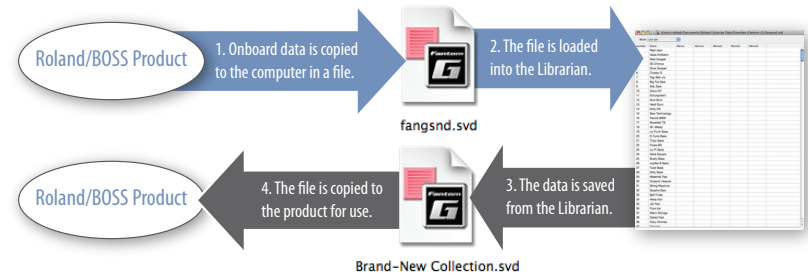
Using a:	The upside:	The downside:
USB connection	All you need to make the connection is a single USB cable	You'll need to install your product's USB driver on your computer.
MIDI connection	If your product is already integrated into a larger MIDI rig, you don't need to add a USB cable. Also, you won't need to install driver software.	You'll need a MIDI interface (purchased separately) and two MIDI cables.





If you'll be using a USB connection, read the driver-installation instructions at the right of this page.

The Offline Librarian

The offline Librarian works on data files you've manually copied to your computer from the product. When you're done working with the data in the Librarian, you copy the data files back to your product. The "offline Librarian" lets you work with your product data even when you're physically away from your product. As of this writing, only two products have an offline Librarian: the Roland Fantom-G and Roland V-Synth GT.



 The offline Librarian doesn't require the installation of driver software on your computer since it doesn't communicate directly with the product via USB.


 Additional Librarian documentation beyond this booklet is available in the Librarian's Help menu.

Installing Roland Software on Your Computer

In this booklet we'll discuss installing Roland software for the following computer operating (OS) systems:

- Windows XP™
- Windows Vista™
- Windows 7™
- Mac OS X™

Check the documentation included with your product's software to learn the specific operating system requirements for its Librarian software.

 If you connect your Roland/BOSS product to your computer via USB, you'll typically get the best results using USB jacks on the back of a desktop computer or on the side of a laptop. We recommend not using a hub.

Though your product’s Librarian software can be found on the CD-ROM it shipped with. However, since we’re always improving and enhancing the software for our products, we recommend downloading the latest version from the product’s page on the RolandUS.com or BOSSUS.com website. Be sure to select the correct download for your computer’s operating system.



For most products, the Librarian software is included with Editor software—when this is the case, the two applications are also usually installed in a single operation. In cases where there’s no Editor, you’ll find a Librarian installer. In older products, there may be separate installers for the Editor and Librarian.

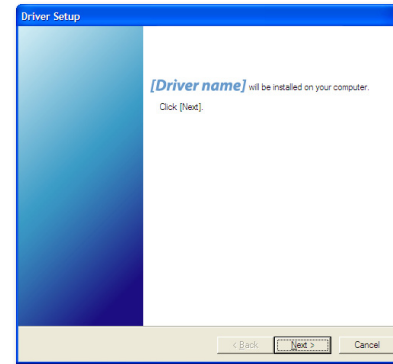
If you’ll be using a USB connection for the live Librarian, keep reading. Otherwise—if you’ll be using MIDI or an offline Librarian—you can jump to the installation instructions for the Librarian (or Editor/Librarian) software.



Installing the USB Driver Software

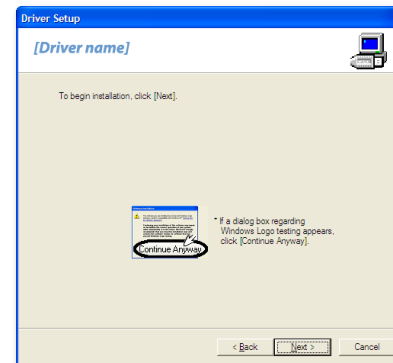
Windows XP

- 1 Power up your PC with all USB cables disconnected except for your keyboard and mouse. If any applications are running, quit them.
- 2 Expand the downloaded installer file.
- 3 Open the XP Drivers folder, double-click the XP folder, and then double-click the Setup.exe file inside.
- 4 If you see a warning that the software’s publisher can’t be verified, click RUN to proceed. The Driver Setup window appears:



If an “Install Program as Other User” dialog appears, quit the installer, and then log in as the system administrator before re-launching the Setup application from Step 3.

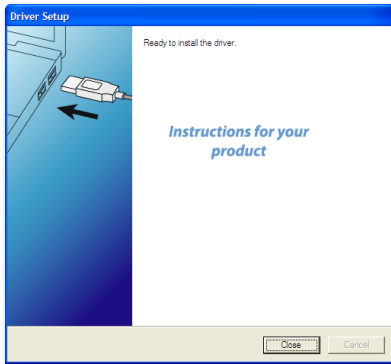
- 5 Click Next to display the installation start window:



If you see the Software Installation window instead of the one shown above, click Continue Anyway. If you can’t continue, see “About Driver Signing Options” later in this booklet. (You can click this button to jump there now.)



- 6 Click Next—the driver is installed and instructions appear telling you what to do next.

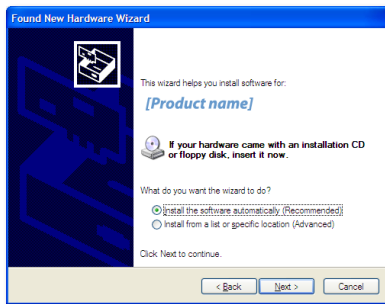


We'll take you through these instructions in this booklet, so you can close this window, or drag it over to the side of the screen if you want to keep it open.

- 7 With the Roland/BOSS product's power turned off, plug one end of the included USB cable into the product's USB jack, and the other end into the USB jack you want to use on your computer.
- 8 Turn on the product—after a few moments, the PC's Found New Hardware Wizard window appears.



If, instead of seeing the Found New Hardware window, you're asked if you want to connect to Windows Update, select **No, not this time**, and then click Next to display the Found New Hardware window.



- 9 Click the button to the left of "Install the software automatically (Recommended)," and then click Next to install the driver.

When the driver's installed, the wizard announces the completion of the installation process.



If the "Software installation" window appears after you click Next, click Continue Anyway. If you can't continue, see "About Driver Signing Options" to the right of this page.



If the "System Settings Change" window appears, click Yes to restart Windows.

- 10 Click Finish.
Windows displays "Your new hardware is ready to use."
- 11 If the Driver Setup window's still open, click its Close button.
- 12 Restart your computer.

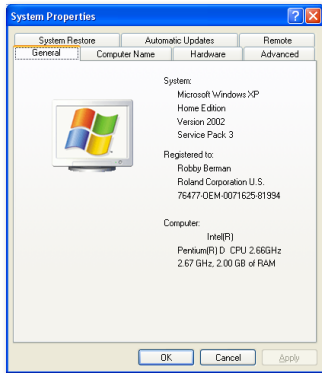


If you ever need to remove the driver from your system, the driver installer folder contains an uninstaller. You can hold onto this file, or re-download the driver folder later should you need it.

About Driver-Signing Options

The Driver Signing window lets you select whether Windows should block the installation of an unknown driver, warn you about it, or just install it.

- 1 In the Start menu, select Control Panel.
- 2 If you're in
 - *Category View*—click Performance and Maintenance, and then click System.
 - *Classic View*—double-click System.



- 3 Click the Hardware tab, and then click Driver Signing.
- 4 Set "What action do you want Windows to take?" to **Warn**.
- 5 Click OK to close the Driver Signing window.



- 6 Click OK to close the System Properties window.
- 7 Return to the driver installation instructions earlier in this booklet.

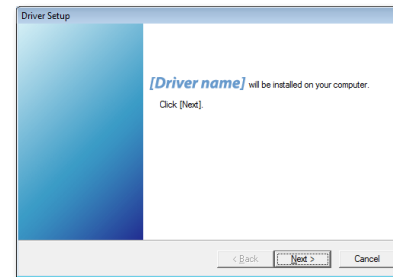
Windows Vista

- 1 Power up your PC with all USB cables disconnected except for your keyboard and mouse. If any applications are running, quit them.
- 2 To start the installer, double-click the Setup application in the Vista Drivers folder you've downloaded and unzipped.

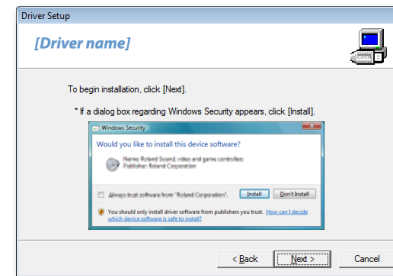


If Vista tells you a program needs your permission to continue, click Continue.

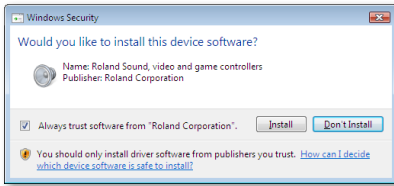
- 3 The Driver Setup window appears:



- 4 Click Next to display the Driver Setup instructions window:



- 5 Click Next.

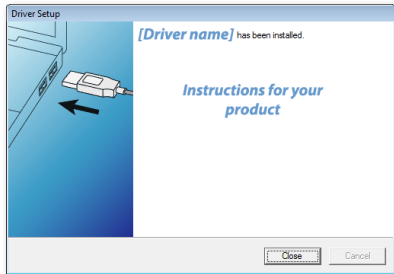


- 6 If Windows Security asks if you'd like to install this device software—as shown above—click Install.



If you plan to install other Roland drivers in the future, you can check **Always trust software from “Roland Corporation”** to save time later.

The driver's installed, and a window opens with instructions.



We'll take you through these instructions in this booklet, so you can close this window, or move it off to the side if you like.

- 7 With the Roland/BOSS product's power turned off, plug one end of the included USB cable into its USB jack, and the other end into the USB jack you want to use on your computer.
- 8 Turn on the product—after a few moments, “Installing device driver software” appears in the lower right corner of the screen.
- 9 When the PC's finished installing the driver, it displays a message telling you so.
- 10 Restart your computer.

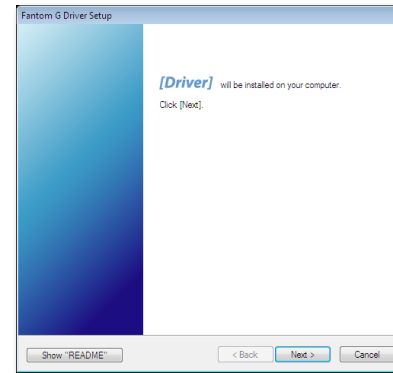
Windows 7

- 1 Power up your PC with all USB cables disconnected except for your keyboard and mouse. If any applications are running, quit them.
- 2 Open the downloaded driver's folder, and double-click Setup inside.

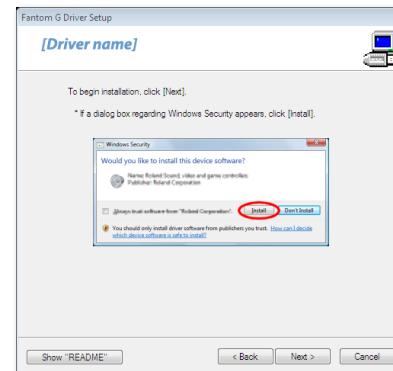


If Windows 7 tells you a program needs your permission to continue, click Continue.

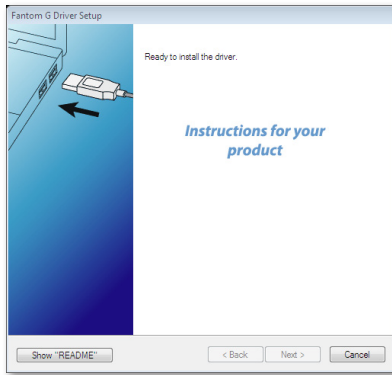
- 3 The Driver Setup window appears:



- 4 Click Next to display the Driver Setup instructions window:



- 5 Click Next—the driver's installed, and a window opens with instructions.

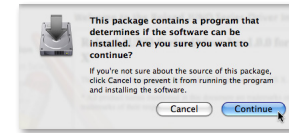


We'll take you through these instructions, so you can close this window, or drag it to the side of the screen if you want to keep it open.

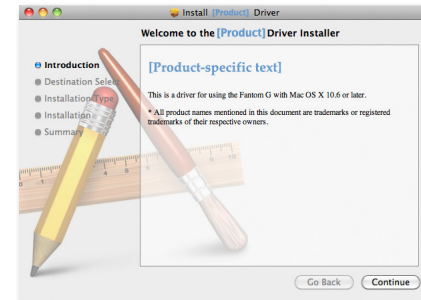
- 6 With the Roland/BOSS product's power turned off, plug one end of the included USB cable into its USB jack, and the other end into the USB jack you want to use on your computer.
- 7 Turn on the product—after a few moments, “Installing device driver software” appears in the lower right corner of the screen.
- 8 When the PC's finished installing the driver, it displays a message telling you so.
- 9 Restart your computer.

Mac OS X

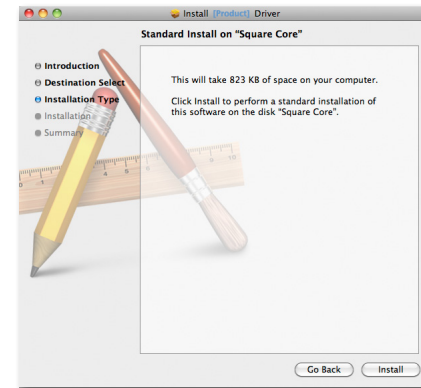
- 1 Disconnect all USB cables from your computer except for your keyboard and mouse.
- 2 Locate the downloaded driver folder and double-click the driver file to launch its installer.
- 3 If the installer says it needs to run a program to determine if the driver can be installed, click Continue.




The Roland driver installer window appears.



- 4 Click Continue to display the Installation Type window, shown in the next column.



 If your Mac has more than a single hard drive or volume, you may be asked to select the drive on which you want to install the driver before seeing the screen above. Select the drive with your active operating system on it, and then click Continue.

- 5 Click Install to display the password authentication window.

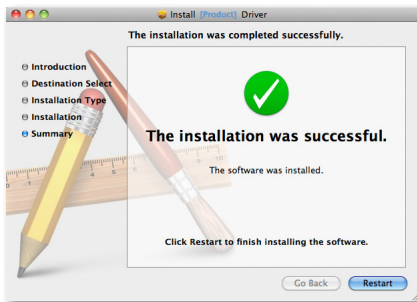
Most likely, your user name will already be filled in.



- 6 Type an administrator password for your computer.
- 7 Click OK—the installer informs you that a restart of your computer will be required after the driver's installed.



- 8 Click Continue Installation to install the driver.
- 9 When you see the Install Succeeded window below, click Restart.



Whenever you perform Mac OS X system updates, please disconnect the product during the process to avoid having to reinstall the driver.



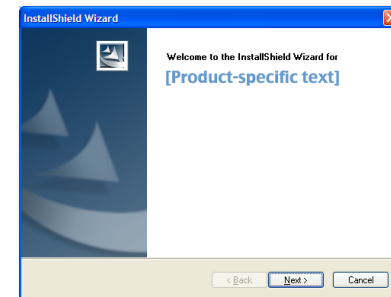
In the same folder as the driver file, you'll find its uninstaller. You can hold onto this file, or re-download the driver folder later should you need it.

Installing the Librarian Software on Your Computer

Window XP

Here's how to install your product's application software.

- 1 Double-click the installer executable .EXE file. The installer opens.



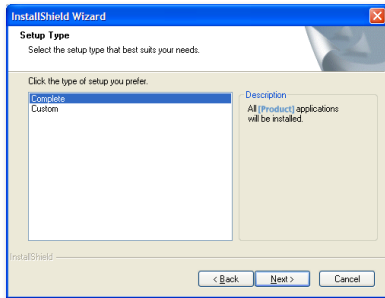
- 2 Click Next, read the License Agreement, and if you'd like to proceed with the installation, click Yes.



If your Mac displays a message about reboot caches, click OK.



When the Mac's restarted, make sure the Roland/BOSS product's power is turned off. Then plug one end of your USB cable into its USB jack, plug the other end into the USB jack you want to use on your computer, and turn on the product.

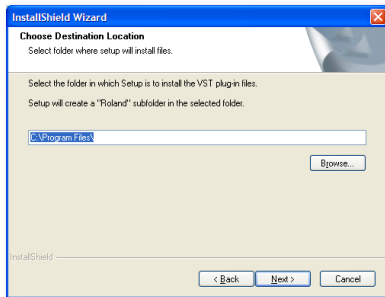


- 3 With “Complete” selected, click Next.



If you’re using a Librarian-only installer, you won’t see the above screen.

- 4 In the Choose Destination Location window, you can select a location on your hard drive for the Roland software—if you don’t have a specific reason to choose a different location, leave the default location as is—and then click Next to display the Setup Type window.



- 5 The installer displays your installation selections and tells you it’s now ready to install the new software. Click Next to proceed—the files are installed.
- 6 Click Finish to exit the installer.

Windows Vista

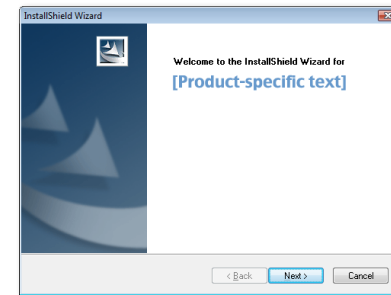
Here’s how to install all of a product’s application software.

- 1 Double-click the installer’s .EXE executable file—the installer opens.



If Vista tells you a program needs your permission to continue, click Continue.

- 2 Choose English as your setup language and click OK to display the InstallShield Wizard window.



- 3 Click Next, read the License Agreement, and if you’d like to proceed, click Yes.
- 4 Enter your name and decide whether to install the driver only for the current user of your computer, or for all users, and then click Next.
- 5 Highlight the Complete installation, and then click Next. (If you’re using a Librarian-only installer, you won’t see this screen.)
- 6 Unless you have a reason to choose a different location, leave the Choose Destination Location window set as it is and click Next.
- 7 When the installer displays your installation selections, click Next to proceed—in a few moments, the files are installed.
- 8 Click Finish to exit the installer.

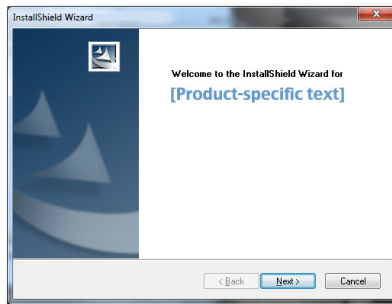
Windows 7

Here's how to install all of a product's applications in a single operation.

- 1 Double-click the installer's .EXE executable file. The installer opens.



If Windows 7 tells you a program needs your permission to continue, click Continue.



- 2 Click Next, read the License Agreement, and if you'd like to proceed, click Yes.
- 3 In the Choose Destination Location window, you can select a location on your hard drive for the Roland software—if you don't have a specific reason to choose a different location, leave the default location as is—and then click Next to display the Setup Type window.
- 4 Highlight the Complete installation, and then click Next.



If you're using a Librarian-only installer, you won't see the above screen.

- 5 When the installer displays your installation selections, click Next to proceed—in a few moments, the files are installed.
- 6 Click Finish to exit the installer.

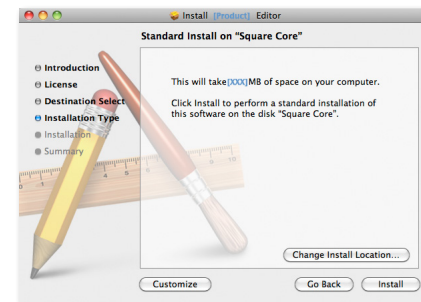
Mac OS X

- 1 After downloading, the installer launches automatically. (If this doesn't happen for you, double-click the downloaded file to mount its disk image, and then double-click the installer.pkg file.)



- 2 Click Continue to display the Software License Agreement window.
- 3 After reading the license agreement, click Continue—if you want to print the agreement for your reference, click Print—and then click Agree.

The Installation Type window appears.



We recommend leaving the installer set to **Standard Install**, and the Change Install Location setting as it is unless you have some specific reason to change either setting.

- 4 Click Install—the software is installed.
- 5 When the installation's complete, click Quit to exit the installer.



The programs you've installed can be found in the Roland folder within your Applications folder, presuming you didn't change their destination location during installation.

About Using a MIDI Connection

To use a MIDI connection with a computer requires the purchase and installation of a MIDI interface of some sort. These range from the very simple to very complex, with prices to match. If you're using a PC, your sound card may already have the MIDI jacks you'll need. We're going to leave it to you to learn how to use your MIDI interface.

Also, the Librarian requires two-way communication with the product, so you'll need to connect both the product's MIDI IN and MIDI OUT jacks to the computer using MIDI cables.



Prepping Your Product

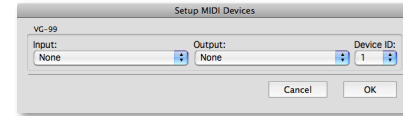
Some Roland/BOSS products require certain settings to communicate with their Librarian via USB. In some products, you may need to be in a particular mode. To learn about your product, see "Product-Specific Instructions" on Page 17, or your product's documentation.



With some Roland/BOSS products, a special Librarian mode temporarily disables all other functions. One advantage to using a MIDI interface is that Librarian mode won't be required when communicating via MIDI. Your product's manual will tell you if it has a Librarian mode.

Prepping Your Live Librarian

If you're using a live Librarian, it'll require a little setup. To set up your Librarian, launch the application and—whether you're connected via USB or MIDI—select [Set Up MIDI Devices...](#) from the Librarian's Setup menu. The Setup MIDI Devices dialog appears in which you can select the input and output to which your product's connected.



This is the dialog for the VG-99's Librarian.

If you're connected to the Librarian using USB, set the

- *Input popup menu*—to your product.
- *Output popup menu*—to your product.

If you're connected to the Librarian using MIDI, set the:

- *Input popup menu*—to the output port your product's connected to on your MIDI interface.
- *Output popup menu*—to the input port your product's connected to on your MIDI interface.

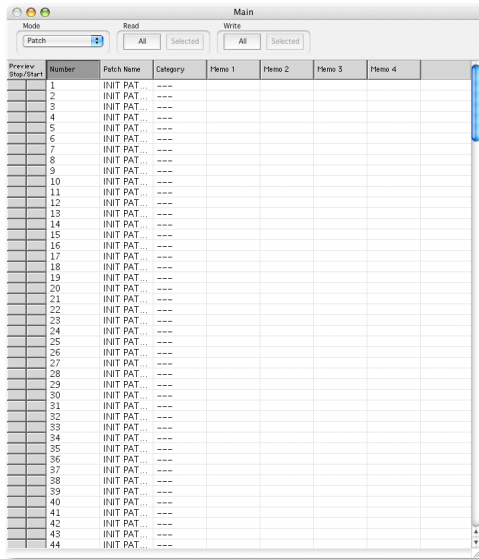


An offline Librarian requires no setup before use.

Using the Librarian

Opening or Loading a Library

Everything you do in the Librarian takes place in a library. You can open a library file that's already been saved on your computer's hard drive, or select **New** from the Librarian's File menu to create a new, empty library.

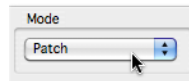


Previous Stop/Start	Number	Patch Name	Category	Memo 1	Memo 2	Memo 3	Memo 4
	1	INIT PAT	---				
	2	INIT PAT	---				
	3	INIT PAT	---				
	4	INIT PAT	---				
	5	INIT PAT	---				
	6	INIT PAT	---				
	7	INIT PAT	---				
	8	INIT PAT	---				
	9	INIT PAT	---				
	10	INIT PAT	---				
	11	INIT PAT	---				
	12	INIT PAT	---				
	13	INIT PAT	---				
	14	INIT PAT	---				
	15	INIT PAT	---				
	16	INIT PAT	---				
	17	INIT PAT	---				
	18	INIT PAT	---				
	19	INIT PAT	---				
	20	INIT PAT	---				
	21	INIT PAT	---				
	22	INIT PAT	---				
	23	INIT PAT	---				
	24	INIT PAT	---				
	25	INIT PAT	---				
	26	INIT PAT	---				
	27	INIT PAT	---				
	28	INIT PAT	---				
	29	INIT PAT	---				
	30	INIT PAT	---				
	31	INIT PAT	---				
	32	INIT PAT	---				
	33	INIT PAT	---				
	34	INIT PAT	---				
	35	INIT PAT	---				
	36	INIT PAT	---				
	37	INIT PAT	---				
	38	INIT PAT	---				
	39	INIT PAT	---				
	40	INIT PAT	---				
	41	INIT PAT	---				
	42	INIT PAT	---				
	43	INIT PAT	---				
	44	INIT PAT	---				



The Librarian has a few appearance-related settings in its Setup menu. Here, we've turned on its gridlines and selected a font we like.

If your Librarian works with more than one type of product data, you'll have a Mode menu in the upper-left corner with which you select the type of data you want to organize.



If you'd like to base a new library on one that already exists, you can open that library, and then select **Duplicate** from the File menu.

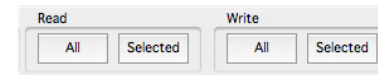
Getting Data In and Out of a Library



All of the following instructions assume you've got both your product and computer powered on, and have installed all the necessary software discussed earlier in this booklet.

Exchanging Data Using Your Live Librarian

If your product has a live Librarian, you'll have an array of buttons at the top of each library window for exchanging data with your product.



In this screenshot, the two buttons for retrieving data from your product are labeled as "Read" buttons. The two buttons for sending it back to the product are labeled as "Write" buttons. (In some products' Librarians, these are labeled as "Receive" and "Send" buttons, but their function is the same.)



If your Librarian supports the exchange of more than one type of product data, click the Mode menu popup and select the type of data you want to work with before proceeding. This is the type of data that will be retrieved and/or sent.

To Read Data from Your Product's User Memory

To retrieve

- *the entire contents of the product's User memory*—click the Read All button. After a few moments, all of the product's data appears in the library.
- *a single item from the product's User memory*—click the library location in which you want to place the item so it's highlighted, and then click the Read Selected button to grab the item from the product.



The Read Selected button is available only when one or more items are highlighted in the Main window.



To read multiple items, Alt-click (Windows) or Command-click (Mac) them before clicking Read Selected.



When you've retrieved the entire contents of a product's User memory, you've just made a backup you can store on your hard drive.

To Write Data Into Your Product's User Memory

To send

- *data to fill the product's entire User memory*—click the Write All button so that the contents of the library are sent to and stored in the product's User memory.
- *a single item to the product's User memory*—click the item in the library to highlight it, and then click the Write Selected button. The item is written into the same-numbered memory location in the product's User memory.



The Write Selected button is available only when one or more items are highlighted in the Main window.



To store multiple items in the product, Alt-click (Windows) or Command-click (Mac) them before clicking Write Selected.



To restore the contents of a product's User memory from a backup library you've created, send the library to the product using the Write All button.

To Exchange Data with the Product's Edit Buffer

In addition to its User memory, your product's likely to also have what's called an "edit buffer." When you're editing something on the product, but haven't yet saved it, this is where that thing temporarily lives. When you start editing something else on the product, or power off, the edit buffer is cleared and your edit's lost.

The ability to exchange the edit buffer's data with the Librarian is handy for two reasons. It means that

- *you can stash an edit you're still working on in the Librarian for safekeeping*—This allows you to keep various versions of an edit until you have the one you want to keep.
- *you can try out something you've sent over from the Librarian without yet writing it in User memory*—If you'd like to audition something from a library but aren't sure you're ready to commit to it, you can send it to the edit buffer, from where it can be played. You can actually save it to User memory if you decide it's a keeper.

To move data between the product edit buffer and the Librarian, use the Read and Write buttons at the left of the library window—in some Librarians, they're labeled as "Temporary" buttons; in some, they're "Preview" buttons. Each pair of buttons is associated with one of the library's memory locations.

Preview Stop/Start	Number
	501
	502
	503

So, to

- *read the current contents of the product's edit buffer*—click the Preview/Temporary Read button for the library location in which you'd like to store the edit buffer's contents.
- *send something from the library to the product's edit buffer*—click the item in the library to highlight it, and then click the item's Preview/Temporary Write button.

Exchanging Data with Your Offline Librarian

If your product has an offline Librarian, each library holds the data contained in a file you've copied onto your computer from the product. Getting data into and out of a library is therefore very simple:

- *To get product data into a library*—open the file that contains it.
- *To get data back to a product*—save the library it's in as a file you then copy back to the product from your computer.



If your product's Librarian supports the organization of more than one type of data, you can select the desired data type from each library's Mode menu once you've opened its file.

While you read and write only the entire contents of User memory at a time with an offline Librarian, you can nonetheless re-arrange the order of the data, or create new libraries—and files for loading into the product—using the Librarian.

Working with Your Data in the Librarian

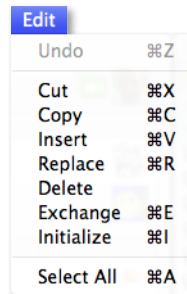
Since the Librarian is essentially an organizational device, its tools all have to do with moving around the items within a library, or moving items from one library to another. Your Librarian lets you keep the windows for multiple libraries open at the same time so you can copy and paste items between them.

The Librarian Edit Menu Commands

All of the Librarian's tools can be found in its Edit menu when you have at least one library open. Different tools are available depending on what's selected, and whether or not you've copied anything yet.



All of the Librarian tools except Delete have keyboard shortcuts that can speed up your work.



The Librarian Edit menu has an Undo feature that lets you reverse your most recent action. (It's Alt-z on a PC and Command-z on a Mac.)

This tool:	Is available when:	It:
Cut	a library item is selected.	clears the currently selected library location, moving all later entries up by one. The cut items is placed in the Librarian's clipboard, from where it can be pasted to a new location.
Copy	a library item is selected.	places the selected item in the Librarian's clipboard, from where it can be pasted to a new location.
Insert	a library item is selected, and something's in the Librarian's clipboard.	pastes the clipboard's contents into the selected location, moving all later items back by one to make room for the new item.
Replace	a library item is selected, and something's in the Librarian's clipboard.	pastes the clipboard's contents into the selected location, replacing whatever's currently there.
Delete	one or more library items are selected.	clears the currently selected library location without placing it in the Librarian's clipboard.
Exchange	two library items are selected.	Swaps the library location of the selected items.
Initialize	one or more library items are selected.	creates a new item with factory default settings in the currently selected location, replacing what's currently there.

Product-Specific Instructions

This section contains additional instructions for specific Roland/BOSS products.

Guitar Products

GT-PRO



Live Librarian (USB or MIDI connection)

Organizes patches

GT-PRO USB Setup

- 1 Make sure the Librarian application isn't running.
- 2 On the GT-PRO, press SYSTEM, and then ◀ or ▶ until "USB: Driver Mode" is displayed.
- 3 Set Driver Mode to [Advanced](#).
- 4 Press EXIT.
- 5 Turn the GT-PRO off and then back on again.

Librarian Setup

- 1 With the GT-PRO connected to your computer and powered up, launch the Librarian application.
- 2 In the Setup MIDI Devices dialog, set the Input and Output popup menus to [GT-PRO Control](#) (Page 13).
- 3 Click OK.

VG-99 and VB-99



Live Librarian (USB or MIDI connection)

Organizes patches, System settings, GK settings, Favorites

VG-99 and VB-99 USB Setup

- 1 Make sure the Librarian application isn't running.
- 2 On the VG-99 or VB-99, press SYSTEM, and then ◀ or ▶ to Page 2.
- 3 Press F2 (USB), and then press ▶ to display Page 2.
- 4 Set Driver Mode to [ADVANC](#).
- 5 Power down the VG-99 or VB-99, and then turn it back on.

Librarian Setup

- 1 With the VG-99 or VB-99 connected to your computer and powered up, launch the Librarian application.
- 2 In the Setup MIDI Devices dialog, set the Input and Output popup menus to [Roland VG-99 Control](#) or [Roland VB-99 Control](#) (Page 13).
- 3 Click OK.

GS-10



Live Librarian (USB or MIDI connection)

Organizes patches

Librarian Setup

- 1 With the GS-10 connected to your computer and powered up, launch the Librarian application.
- 2 In the Setup MIDI Devices dialog, set the Input and Output popup menus to **GS-10 Control** (Page 13).
- 3 Click OK.

ME-25



Live Librarian (USB connection)

Organizes patches

Librarian Setup

- 1 With the ME-25 connected to your computer and powered up, launch the Librarian application.
- 2 In the Setup MIDI Devices dialog, set the Input and Output popup menus to **ME-25** (Page 13).
- 3 Click OK.

GT-10 and GT-10B



Live Librarian (USB or MIDI connection)

Organizes patches

GT-10 and GT-10B USB Setup

- 1 Make sure the Librarian application isn't running.
- 2 On the GT-10, press SYSTEM, and then select **USB**.
- 3 Press CATEGORY/ENTER.
- 4 Set Driver Mode to **Advanced**.
- 5 Turn the GT-10 or GT-10B off and then back on again.

Librarian Setup

- 1 With the GT-10 or GT-10B connected to your computer and powered up, launch the Librarian application.
- 2 In the Setup MIDI Devices dialog, set the Input and Output popup menus to **GT-10** or **GT-10B** (Page 13).
- 3 Click OK.

Keyboard Products

Fantom-G



Type of Librarian: Offline Librarian

Organizes live sets, studio sets, patches, rhythm sets, sample sets, arpeggios, chords, arpeggio sets, chord sets

The Fantom-G Librarian opens .svd files you've copied to your computer from the Fantom-G's internal memory or from a USB stick. Each Fantom-G project contains one of these files, located in the project's SND folder. When you save a library, it's saved as an .svd file.

V-Synth GT



Type of Librarian: Offline Librarian

Organizes patches, tones, waves

In the V-Synth GT, data is loaded into the Librarian—and saved from the Librarian—as project, or .prj, files. Each V-Synth GT library is called a “project window,” and it shows patches, tones, and waves in a single multi-column view. The Librarian offers a slightly different set of views and tools for the unique architecture of the V-Synth GT.

You can see the tones that are active for each patch in the Tone Switch column.

<i>This abbreviation:</i>	<i>Means:</i>
L/U	both the Upper and Lower tones are turned on.
L/_	only the Lower tone is turned on.
_/U	only the Upper tone is turned on.
/	both tones are turned off.

The V-Synth GT Librarian also offers a special Clean Project... command that automatically weeds out waves and tones from the current project that can't be loaded into the V-Synth GT, or that no patch uses. It also moves projects and tones around so that any empty spaces that remain are at the end of their respective columns. When you select this command from the File menu, the Clean Project dialog appears in which you can customize the cleanup. When you checkmark

- *Keep Unused User Waves*—Clean Project leaves all of your sampled or imported waves alone, even if the V-Synth GT can't load them.
- *Keep Unused User Tones*—Clean Project leaves all of your tones alone.
- *Keep Tone Numbering*—Clean Project leaves the numbering of all of your tones alone. With this unchecked, the command moves all remaining tones forward to fill the spaces left by tones that have been removed.
- *Keep Patch Numbering*—Clean Project leaves the numbering of all of your patches alone, and doesn't move subsequent patches forward to fill any empty spaces.

Finally, the File menu offers an Import Wave... command that allows you to import WAV, AIF, AIFF, or VPW audio files into the project.

JUNO-G



Type of Librarian: Live Librarian

Organizes performances, patches, rhythm sets, chords, arpeggios, rhythm groups, and rhythm patterns

The Librarian automatically switches the JUNO-G in and out of Librarian mode when you communicate using USB. When the JUNO-G's in Librarian mode, all of its front-panel functionality is disabled.

JUNO-G USB Setup

- 1 Make sure the Librarian application isn't running.
- 2 On the JUNO-STAGE, press the USB MODE button.
- 3 Press F2 (MIDI) to switch to USB-MIDI mode.

Librarian Setup

- 1 With the JUNO-G connected to your computer and powered up, launch the Librarian application.
- 2 In the Setup MIDI Devices dialog, set the Input and Output popup menus to [Roland JUNO-G](#) (Page 13).
- 3 Click OK.

JUNO-STAGE



Type of Librarian: Live Librarian

Organizes performances, patches, rhythm sets, arpeggios, chords, rhythm groups, rhythm patterns

JUNO-STAGE USB Setup

- 1 Make sure the Librarian application isn't running.
- 2 On the JUNO-STAGE, press MENU, use ▲ and ▼ to select **System**, and then press ENTER.
- 3 Use ▲ and ▼ to select **GENERAL**, and then press ENTER.
- 4 Use ▲ and ▼ to select **COMMON**, and then press ENTER.
- 5 Use the cursor buttons to select **USB Driver**, and then set it to **VENDER**.
- 6 Press EXIT.
- 7 Turn the JUNO-STAGE off and then back on again.

Librarian Setup

- 1 With the JUNO-STAGE connected to your computer and powered up, launch the Librarian application.
- 2 In the Setup MIDI Devices dialog, set the Input and Output popup menus to **JUNO** (Page 13).
- 3 Click OK.

JUNO-Di



Type of Librarian: Live Librarian

Organizes performances, patches, rhythm sets

JUNO-Di USB Setup

The JUNO-Di is set by default as it should be for connecting to the Librarian, but to make sure you haven't inadvertently changed this setting:

- 1 Make sure the Librarian application isn't running.
- 2 On the JUNO-Di, press MENU, use ▲ and ▼ to select **System**, and then press ENTER.
- 3 Use ▲ and ▼ to select **MIDI**, and then press ENTER.
- 4 Use ▲ and ▼ to select **USB Driver**, and then press ENTER.
- 5 Set USB Driver to **VENDER**, and then press EXIT.
- 6 Turn the JUNO-Di off and then back on again.

Librarian Setup

- 1 With the JUNO-Di connected to your computer and powered up, launch the Librarian application.
- 2 In the Setup MIDI Devices dialog, set the Input and Output popup menus to **JUNO** (Page 13).
- 3 Click OK.

SH-201



Type of Librarian: Live Librarian

Organizes patches

Librarian Setup

- 1 With the SH-201 connected to your computer and powered up, launch the Librarian application.
- 2 In the Setup MIDI Devices dialog, set the Input and Output popup menus to **SH-201** (Page 13).
- 3 Click OK.

Fantom-X



Type of Librarian: Live Librarian

Organizes patches, rhythm sets, performances, rhythm patterns, rhythm groups, arpeggio styles, chord forms

Fantom-X USB Setup

- 1 Make sure the Librarian application isn't running, and that the Fantom-X isn't currently connected to your computer via USB.
- 2 On the Fantom-X, press MENU, and then use ▲ and ▼ to select **System**.
- 3 Press F2 (↓) to select **USB**.
- 4 Set USB Mode to **MIDI**.
- 5 Connect the Fantom-X to the computer via USB.
- 6 Press MENU, use ▲ and ▼ to select **Utility**, and then press ENTER.
- 7 Press F4 (Librarian) to enter Librarian mode.



When you're done using the Librarian, press F8 (EXIT) on the Fantom-X to exit Librarian mode and return to normal operation.

Librarian Setup

- 1 With the Fantom-X connected to your computer and powered up, launch the Librarian application.
- 2 In the Setup MIDI Devices dialog, set the Input and Output popup menus to **Roland Fantom-X** (Page 13).
- 3 Click OK.

The End

We hope you've found this InFocus booklet helpful. Keep an eye out for other InFocus booklets available for downloading at www.RolandUS.com.