

# PowerSteamer® Powerbrush PowerLifter® Powerbrush



## USER'S GUIDE

1370 SERIES  
1622 SERIES

- 3 Safety Instructions
- 4 Product View
- 5 Assembly/Special Features
- 6-8 Operation
- 8-9 Maintenance and Care
- 9-10 Troubleshooting
- 10 Consumer Services
- 11 Replacement Parts
- 12 Warranty



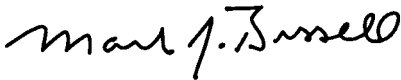
## **Thank you for buying a BISSELL deep cleaner**

We're glad you purchased a BISSELL deep cleaner. Everything we know about floor care went into the design and construction of this complete, high-tech home cleaning system. By purchasing this product you are helping BISSELL with our commitment to reducing our impact on the environment through an expanding range of sustainable design efforts.

Your deep cleaner is well made, and we back it with a limited one-year warranty. We also stand behind it with a knowledgeable, dedicated Consumer Services department, so, should you ever have a problem, you'll receive fast, considerate assistance.

My great-grandfather invented the floor sweeper in 1876. Today, BISSELL is a global leader in the design, manufacture, and service of high quality homecare products like your deep cleaner.

Thanks again, from all of us at BISSELL.



**Mark J. Bissell**

**President and Chief Executive Officer**

# IMPORTANT SAFETY INSTRUCTIONS

When using an electrical appliance, basic precautions should be observed, including the following:

Read all instructions before using your PowerSteamer®/PowerLifter®.

**⚠ WARNING:** To reduce the risk of fire, electric shock, or injury:

- Do not immerse.
- Use only on surfaces moistened by cleaning process.
- Always connect to a properly grounded outlet.
- See Grounding Instructions.
- Unplug from outlet when not in use and before conducting maintenance or troubleshooting.
- Do not leave machine when it is plugged in.
- Do not service machine when it is plugged in.
- Do not use with damaged cord or plug.
- If appliance is not working as it should, has been dropped, damaged, left outdoors, or dropped into water, have it repaired at an authorized Service Center.
- Use indoors only.
- Do not pull or carry by cord, use cord as a handle, close door on cord, pull cord around sharp corners or edges, run appliance over cord, or expose cord to heated surfaces.
- Unplug by grasping the plug, not the cord.
- Do not handle plug or appliance with wet hands.
- Do not put any object into appliance openings, use with blocked opening, or restrict air flow.
- Do not expose hair, loose clothing, fingers or body parts to openings or moving parts.
- Do not pick up hot or burning objects.
- Do not pick up flammable or combustible materials (lighter fluid, gasoline, kerosene, etc.) or use in the presence of explosive liquids or vapor.
- Do not use appliance in an enclosed space filled with vapors given off by oil base paint, paint thinner, some moth proofing substances, flammable dust, or other explosive or toxic vapors.
- Do not pick up toxic material (chlorine bleach, ammonia, drain cleaner, gasoline, etc.).
- Do not modify the 3-prong grounded plug.
- Do not allow to be used as a toy.
- Do not use for any purpose other than described in this User's Guide.
- Do not operate the appliance unless the belt door is securely assembled in the location provided.
- Do not unplug by pulling on the cord.
- Use only manufacturer's recommended attachments.
- Use only cleaning products formulated by BISSELL for use in this appliance to prevent internal component damage. See the cleaning fluid section of this guide.
- Keep openings free of dust, lint, hair, etc.
- Do not point attachment nozzle at people or animals
- Keep appliance on a level surface.

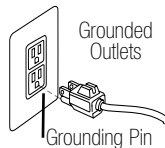
- Turn off all controls before unplugging.
- Be extra careful when cleaning stairs.
- Close attention is necessary when used by or near children.
- **WARNING:** The power cord on this product contains lead, a chemical known to the State of California to cause birth defects or other reproductive harm.  
**WASH HANDS AFTER HANDLING.**

## SAVE THESE INSTRUCTIONS.

THIS MODEL IS FOR HOUSEHOLD USE ONLY.  
Commercial use of this unit voids the manufacturer's warranty.

## GROUNDING INSTRUCTIONS

This appliance must be connected to a grounded wiring system. If it should malfunction or break down, grounding provides a safe path of least resistance for electrical current, reducing the risk of electrical shock. The cord for this appliance has an equipment-grounding conductor and a grounding plug. It must only be plugged into an outlet that is properly installed and grounded in accordance with all local codes and ordinances.



**⚠ WARNING:** Improper connection of the equipment-grounding conductor can result in a risk of electrical shock. Check with a qualified electrician or service person if you aren't sure if the outlet is properly grounded. **DO NOT MODIFY THE PLUG.** If it will not fit the outlet, have a proper outlet installed by a qualified electrician. This appliance is designed for use on a nominal 120-volt circuit, and has a grounding attachment plug that looks like the plug in the drawing above. Make certain that the appliance is connected to an outlet having the same configuration as the plug. No plug adapter should be used with this appliance.

## Product view



## WARNING:

To reduce the risk of fire and electric shock due to internal component damage, use only BISSELL cleaning fluids intended for use with the deep cleaner. Non-BISSELL cleaning solutions may harm the machine and void the warranty.

## Cleaning fluid

Keep plenty of genuine BISSELL Fiber Cleansing Formula™ on hand so you can clean and protect whenever it fits your schedule. Always use genuine BISSELL deep cleaning formulas. Non-BISSELL cleaning solutions may harm the machine and will void the warranty.



48 oz. BISSELL Fiber Cleansing Formula™ with Scotchgard™ Protector  
**item # 0710**



48 oz. BISSELL Multi-Allergen Removal™ Formula™ with Scotchgard™ Protector  
**item # 0720**



48 oz. BISSELL Pet Odor and Soil Removal™ Formula with Scotchgard™ Protector  
**item # 0730**



48 oz. BISSELL Natural Orange Extract Formula with Scotchgard™ Protector  
**item # 0740**



48 oz. BISSELL Lavender Essence Formula with Scotchgard™ Protector  
**item # 0750**



43 oz. BISSELL 3X Concentrated Fiber Cleansing Formula with Scotchgard™ Protector  
**item # 0716**



32 oz. BISSELL Hard Floor Solutions™  
**item # 0482**



22 oz. BISSELL Tough Stain PreCleaner™  
**item # 0400**

## How to use this guide

This user's guide has been designed to help you get the maximum satisfaction from your BISSELL deep cleaner. You'll find assembly and operating instructions, safety precautions, as well as maintenance and troubleshooting instructions. Please read this user's guide thoroughly before assembling your deep cleaner.

Your deep cleaner comes in three easy to assemble components:

- Handle assembly
- Upper body assembly
- Lower body assembly

Three Phillips head screws are also included and can be found taped to handle assembly.

## Assembly

The only tool you will need to assemble your cleaner is a Phillips head screwdriver.

1. Slide upper body assembly onto lower body and secure with two screws.
2. Slide handle assembly down into upper body until it will go no further and secure with screw.

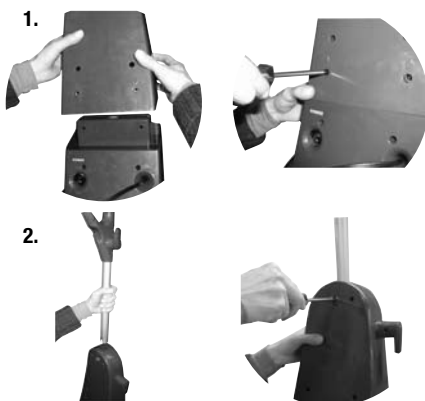


### WARNING:

Do not plug in your cleaner until you have completely assembled it per the following instructions and are familiar with all instructions and operating procedures.

### Tip:

Deep cleaning carpeting regularly can reduce dust and allergens in your home.



## Special features of your BISSELL deep cleaner

Your BISSELL deep cleaner is a home cleaning system that uses a combination of hot tap water, BISSELL advanced cleaning formula, brush agitation and suction to safely clean carpets.

### DirtLifter® PowerBrush

The DirtLifter PowerBrush is designed to enhance cleaning performance. The bristle pattern safely lifts out the deep down dirt while gently grooming carpet fibers. The floating suspension self-adjusts to all carpet heights. When the power is ON ( I ) and the machine is in the upright position, your carpet is protected because the brushes are lifted up off the carpet.



### WARNING:

To reduce the risk of fire, use only BISSELL advanced deep cleaning formula for full size machines in your deep cleaner. Use of cleaning formulas that contain lemon or pine oil may damage this appliance and void the warranty. Chemical spot cleaners or solvent-based soil removers should not be used. These products may react with the plastic materials used in your deep cleaner causing cracking or pitting.

## Special features of your BISSELL deep cleaner

### Measuring cup

Your deep cleaner is equipped with a measuring cup for adding the proper amount of formula to the 2-in-1 tank. For convenience the measuring cup is built into the lid of the 2-in-1 tank.

### 2-in-1 water tank

Our 2-in-1 water tank system is designed with a heavy duty bladder inside for clean water. As you clean, the clean water in the bladder will empty and mix with the cleaning formula. Dirty water pulled out of your carpets will collect around the outside of the bladder so that clean and dirty water are always kept separate. This allows the user to maximize tank space, yet only carry one tank to and from the sink for emptying and filling.



## Operation

### Before you clean

1. Plan activities to give your carpet time to dry.
2. **Move furniture** to another area if cleaning an entire room (optional).
3. **Vacuum area** with a dry vacuum cleaner before deep cleaning.
4. Plan your cleaning route to leave an exit path. It is best to begin cleaning in the corner farthest from your exit.

5. **Pretreating (optional)**

Pretreating is recommended to improve cleaning effectiveness for heavily soiled carpet in high traffic areas such as entry ways and hallways.

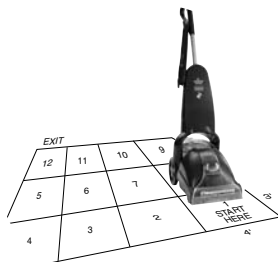
**To pretreat:**

- A. Using the BISSELL Tough Stain Pre-cleaner, generously spray evenly over soiled area, do not over wet.
- B. Wait 3-5 minutes before deep cleaning.
- C. Clean as normal using your BISSELL deep cleaner, following the instructions below.

### Fill the 2-in-1 water tank

1. With your foot, press the handle release lever on the back of the machine and lay handle down to access the tank.
2. Remove the tank from the base of the machine by lifting the tank carry handle.

**ATTENTION:**  
Some Berber carpets have a tendency to fuzz with wear. Repeated strokes in the same area with an ordinary vacuum or deep cleaner may aggravate this condition.



## Operation

### Fill the 2-in-1 water tank (continued)

3. Carry like a bucket to the sink. Rotate the handle forward to unlatch the lid. Remove lid, turn over and locate built in measuring cup.
4. Fill formula to the indicated fill line on the built in measuring cup and pour into mouth of the bladder.

#### If using BISSELL 3X Concentrate

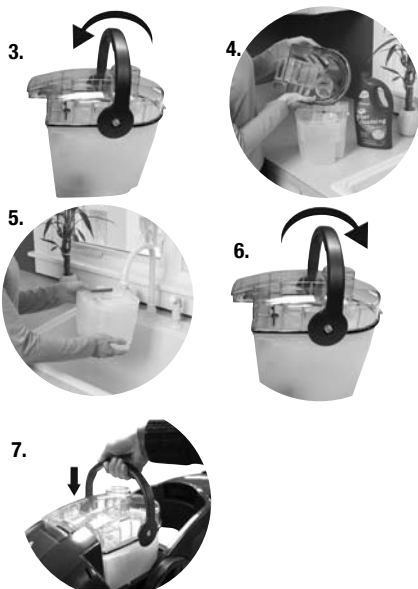
**formulas:** add one formula capful directly into the mouth of the bladder.

5. Fill up the bladder with clean hot tap water. **\*Do not boil or microwave water as it can destroy the bladder.**
6. Replace the top of the tank by matching the lid and tank edges. Handle must be in the forward position in order to replace lid. Rotate the handle to the carrying position to latch the lid.
7. Place tank into machine base, seating firmly in place. Rotate tank handle back into latched position. Bring machine handle back into upright position.

**Note: Remember to secure the lid and test to make sure it is secure before picking up the tank.**

### Carpet cleaning strokes

1. Plug the deep cleaner into a proper outlet and turn the power switch ON (I). The switch is located on the back of the unit.
2. With your foot, press the handle release lever on the back of the lower body of unit.
3. While pressing the spray trigger, make one slow forward wet pass and another back. Let the BISSELL advanced deep cleaning formula and DirtLifter PowerBrush do the work for you. **Caution: Do not over wet.**
4. Release the spray trigger and make one slow forward and backward pass over the same area to remove any residual dirty water and aid in drying.
5. Repeat cleaning passes until solution being pulled up appears clean. Continue passes without pressing the trigger until you can't see any more water being suctioned up.



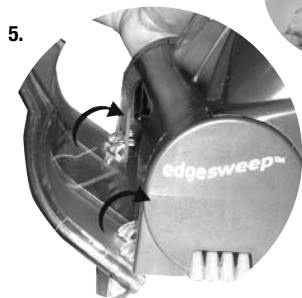
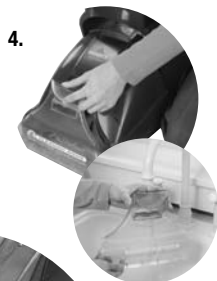
**Tip:** Thorough vacuuming before deep cleaning will prevent early clogging of the lint trap.

**WARNING:**  
To reduce the risk of fire and electric shock due to internal component damage, use only BISSELL cleaning fluids intended for use with the deep cleaner. Non-BISSELL cleaning solutions may harm the machine and void the warranty.

## Operation

### Empty the 2-in-1 water tank/ clean removable nozzle

1. Turn power switch OFF (O). Remove the 2-in-1 water tank from the base using the tank carry handle. Carry the tank like a bucket to a utility sink or outside where you will dispose of the collection water. Remove the top of the tank by rotating the handle forward to unlatch lid and lifting lid off tank.
2. Empty collection water from bottom of tank.
3. After each use, remove and rinse the lint screen located on the tank lid.
4. If nozzle needs to be rinsed: remove by grasping handle at top and pulling forward. Clean removable nozzle by rinsing under running water.
5. When finished replace nozzle by slightly raising front of machine to line up slots on the base of the machine with the hooks on nozzle. Attach at base first and then click nozzle into place.  
**NOTE: If nozzle is not attached properly loss of suction will occur.**
6. To continue carpet cleaning refer back to pages 6 through 8, beginning with "Fill the 2-in-1 water tank" on page 6.



If cleaning is complete, refer to the "Maintenance and care" section on below.

## Maintenance and care

### Machine care

For best results, a few simple steps can assure your machine is well maintained after your cleaning is complete.

1. Turn power switch OFF (O). Unplug the machine and wrap the power cord.
2. After emptying the 2-in-1 water tank, rinse it out at a faucet with running hot tap water, taking care to clean underneath and around the heavy duty bladder. Clean out red lint screen. Removable nozzle may be rinsed if necessary.
3. Replace the 2-in-1 water tank on the machine.
4. Any loose hair or debris can be pulled from the brush roll if desired and thrown away.
5. Wipe the machine's exterior with a soft cloth.
6. After carpet is dry, vacuum again to remove hair and fuzz.



## Maintenance and care

### Machine storage

Put the unit away in a closet or basement for the next use. Store cleaner in a protected, dry area. Since this product uses water, it must not be stored where there is a danger of freezing. Freezing will damage internal components and void the warranty.

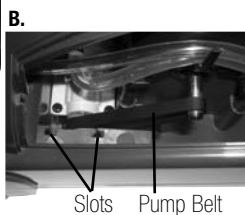
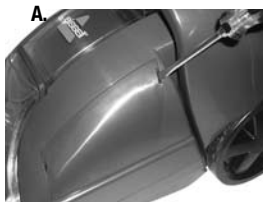
**WARNING:**  
To reduce the risk of fire, electric shock or injury, unplug from the outlet before servicing.

## Troubleshooting

### Reduced Spray OR No Spray

#### Possible cause

1. Bladder may be empty
2. 2-in-1 tank may not be seated properly.
3. Pump may have lost prime.
4. The pump belt may be broken.



#### Remedies

1. Turn power switch OFF (O); Refill bladder with clean hot tap water.
2. Turn power switch OFF (O); remove tank and reseal tanks.
3. Turn power switch OFF (O); after 1 minute turn ON (I) and depress spray release trigger.

4. Turn power switch OFF (O) and unplug from the outlet. To check if a pump belt has broken, you will need a flat head screwdriver.

**A.** Insert the blade end into the slot of the belt access door to release. Examine the belt for breakage. You should be able to see the pump belt looped around the motor shaft. If it is broken or missing, please refer to Replacement Parts on page 11.

A replacement belt may be ordered at [www.bissell.com](http://www.bissell.com) or by calling BISSELL Consumer Services at 800-237-7691.

Complete installation instructions will accompany the replacement belt.

**B.** When replacing belt access door be sure to line up slots of belt access door with slots in machine, slide door into place and snap shut.

### DirtLifter PowerBrush Does Not Turn

#### Possible cause

1. The brush belt or pump belt is off or broken.

#### Remedies

1. Refer to Remedy 5 above to check if brush belt or pump belt is broken.

# Troubleshooting

## Cleaner Not Picking Up Solution

### Possible cause

1. Removable nozzle may not be properly attached.
2. 2-in-1 tank lid is not properly installed.
3. 2-in-1 tank is not properly seated.
4. 2-in-1 tank has picked up maximum dirty water.
5. The lint screen may be clogged

### Remedies

1. Make sure nozzle is on correctly by slightly raising front of machine to line up slots on the base of the machine with the hooks on nozzle. Attach at base first and then click nozzle into place.
2. Re-install lid; refer to the image on page 8.
3. 2-in-1 tank must be firmly seated to function; remove and reseal 2-in-1 tank.
4. Empty 2-in-1 tank and refill, refer to the Operation section.
5. Clean out lint screen. Refer to page 8.

**Other maintenance or service not included in the manual should be performed by an authorized service representative.**

**Thank you for selecting a BISSELL product.**

**Please do not return this product to the store**

**For any questions or concerns, BISSELL is happy to be of service. Contact us directly at 1-800-237-7691.**

## BISSELL Consumer Services

For information about repairs or replacement parts, or questions about your warranty, call:

### **BISSELL Consumer Services**

**1-800-237-7691**

Monday - Friday 8 a.m. — 10 p.m. EST

Saturday 9 a.m. — 8 p.m. EST

Or write:

BISSELL HOMECARE, INC

PO Box 3606

Grand Rapids MI 49501

ATTN: Consumer Services

Or visit the BISSELL website - **[www.bissell.com](http://www.bissell.com)**

When contacting BISSELL, have model number of unit available.

Please record your Model Number: \_\_\_\_\_

Please record your Purchase Date: \_\_\_\_\_

**NOTE: Please keep your original sales receipt. It provides proof of date of purchase in the event of a warranty claim. See Warranty on page 12 for details.**

# Replacement parts

Item	Part No.	Part Name
1	203-0104	Tank Assembly Complete
2	203-0102	Tank Base
3	203-0124	Removable Nozzle
4	215-0628	Replacement Pump Belt (with instructions)
5	015-0621	Replacement Brush Belt (with instructions)
6	203-0105	Lint Screen
7	203-0149	Hard Floor Tool
8	0710	48 oz. BISSELL Fiber Cleansing Formula with Scotchgard™ Protector
9	0400	22 oz. BISSELL Tough Stain PreCleaner
10	0716	43 oz. BISSELL 3x Concentrated Fiber Cleansing Formula with Scotchgard™ Protector
11	0482	32 oz. BISSELL Hard Floor Solutions™ Formula

1



2



3



4



5



6



7



8



9



10



11



**For a complete list of replacement parts, cleaning formulas, and accessories available for your BISSELL deep cleaner please visit [www.bissell.com](http://www.bissell.com) or contact BISSELL Consumer Services at 800.237.7691.**

## Warranty - BISSELL PowerSteamer/PowerLifter

This warranty gives you specific legal rights, and you may also have other rights which may vary from state to state. If you need additional instruction regarding this warranty or have questions regarding what it may cover, please contact BISSELL Consumer Services by E-mail, telephone, or regular mail as described below.

### Limited One Year Warranty

Subject to the **\*EXCEPTIONS AND EXCLUSIONS** identified below, upon receipt of the product BISSELL Homecare, Inc. will repair or replace (with new or remanufactured components or products), at BISSELL's option, free of charge from the date of purchase by the original purchaser, for one year any defective or malfunctioning part.

See information below on "If your BISSELL product should require service".

This warranty applies to product used for personal, and not commercial or rental service. This warranty does not apply to fans or routine maintenance components such as filters, belts, or brushes. Damage or malfunction caused by negligence, abuse, neglect, unauthorized repair, or any other use not in accordance with the User's Guide is not covered.

### If your BISSELL product should require service:

Contact BISSELL Consumer Services to locate a BISSELL Authorized Service Center in your area.

If you need information about repairs or replacement parts, or if you have questions about your warranty, contact BISSELL Consumer Services.

#### Website or E-mail:

[www.bissell.com](http://www.bissell.com)

Use the "Customer Services" tab.

#### Or Call:

BISSELL Consumer Services

1-800-237-7691

Monday - Friday 8 a.m. - 10 p.m. ET

Saturday 9 a.m. - 8 p.m. ET

#### Or write:

BISSELL Homecare Inc.

PO Box 3606

Grand Rapids MI 49501

ATTN: Consumer Services

BISSELL HOME CARE, INC. IS NOT LIABLE FOR INCIDENTAL OR CONSEQUENTIAL DAMAGES OF ANY NATURE ASSOCIATED WITH THE USE OF THIS PRODUCT. BISSELL'S LIABILITY WILL NOT EXCEED THE PURCHASE PRICE OF THE PRODUCT.

**Some states do not allow the exclusion or limitation of incidental or consequential damages, so the above limitation or exclusion may not apply to you.**

#### **\*EXCEPTIONS AND EXCLUSIONS FROM THE TERMS OF THE LIMITED WARRANTY**

THIS WARRANTY IS EXCLUSIVE AND IN LIEU OF ANY OTHER WARRANTIES EITHER ORAL OR WRITTEN. ANY IMPLIED WARRANTIES WHICH MAY ARISE BY OPERATION OF LAW, INCLUDING THE IMPLIED WARRANTIES OF MERCHANTABILITY AND FITNESS FOR A PARTICULAR PURPOSE, ARE LIMITED TO THE ONE YEAR DURATION FROM THE DATE OF PURCHASE AS DESCRIBED ABOVE.

Some states do not allow limitations on how long an implied warranty lasts, so the above limitation may not apply to you.



©2008 BISSELL Homecare, Inc  
Grand Rapids, Michigan  
All rights reserved. Printed in China  
Part Number 120-4026  
Rev 1/08  
Visit our website at: [www.bissell.com](http://www.bissell.com)  
Scotchgard is a trademark of 3M

