

# CONTENTS

---

Title	Page
<b>1. Safety Information</b> .....	1
Environment Conditions.....	1
Maintenance & Clearing.....	1
Safety symbols.....	1
<b>2. Description</b> .....	2
<b>3. Features</b> .....	2
<b>4. Specifications</b> .....	2
Output sound pressure levels.....	2
Output frequency.....	2
Reference conditions.....	2
Influence of ambient conditions.....	2
Total Harmonic Distortion (THD).....	2
2	
Accuracy of sound pressure level.....	2
Power.....	2
Battery life.....	2
Battery test .....	3
Dimensions.....	3
Weight.....	3
Ambient conditions.....	3
Storage temperature & humidity.....	3
Accessories.....	3
<b>5. Nomenclature And Function</b> .....	4
<b>6. Operating Preparation</b> .....	5
<b>7. Calibration Procedure</b> .....	5

## 1. Safety Information

Read the following safety information carefully before attempting to operate or service the meter. Use the meter only as specified in this manual; otherwise, the protection provided by the meter may be impaired.

### Environment Conditions

- Altitude up to 2000 meters
- Relative humidity 90% max.
- Operation Ambient 0° to 40°C

### Maintenance & Clearing

Repairs or servicing not covered in this manual should only be performed by qualified personnel. Periodically wipe the case with a dry cloth. Do not use abrasives or solvents on this instrument.

### Safety symbols



Comply with EMC

When servicing, use only specified replacement parts.

## 2. Description

Sound level calibrator is used to calibrate sound level meters and other sound measurement equipment. You can calibrate 1 inch diameter microphones directly and 1/2 inch microphones using 1/2 inch adaptor supplied with the calibrator. With available adaptors, you can calibrate other microphones and instruments.

### 3. Features

Conforms to ANSI S1.4-1984 and IEC 60942-2003 Class 2.

Calibration levels of 94dB and 114dB.

Fits 1 inch and 1/2 inch diameter microphone.

### 4. Specifications

**Output sound pressure levels:**

94dB and 114dB re 20 uPa under reference conditions.

**Output frequency:** 1000Hz +/- 2%

**Reference conditions:**

Temperature :23°C (74°F)

Relative humidity: 50%

Atmospheric pressure: 1013hpa

**Influence of ambient conditions:**

Temperature coefficient: 0.005dB/?

Humidity coefficient: 0.005dB/%RH

**Total Harmonic Distortion (THD):** <3%

**Accuracy of sound pressure level:** +/- 0.5dB

**Power:** one 9V battery 006P or IEC 6F22 or NEDA 1604.

**Battery life:** approx.40 hours (Alkaline Battery)

**Battery test:**

Internal circuitry checks condition of battery continuously.

Calibrator will not operate when the green LED turns to red, which means that battery voltage has fallen below the acceptable range.

**Dimensions (LxWxH):**

4.4 x 2.4 x 1.7inch (113 x 63 x 44mm)

**Weight:** approx. 170g(inc luding battery)

**Ambient conditions:**

0° – 40°C (32° – 140°F), 10 – 90%RH,  
650 –1080hpa

**Storage temperature & humidity:**

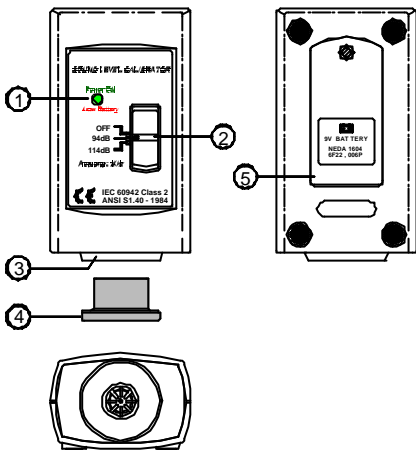
-10° – 50°C (14° – 122°F), 0 – 70%RH

**Accessories:**

Instruction manual, carrying case, 9V battery,  
1/2"microphone adapter

Note: Specifications and information is subject to change with out notice. Please visit [www.bkprecision.com](http://www.bkprecision.com) for the most current product information.

## 5. Nomenclature And Functions



- 
- ① Power and low battery indicate LED.
  - ② Power and output level select switch.
  - ③ Transducer assembly 1-inch cavity for microphone insertion.
  - ④ 1/2-inch microphone adapter.
  - ⑤ Battery cover.
-

## 6. Operating Preparation

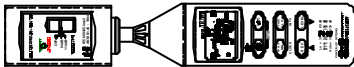
- (1) Remove battery cover and install a 9V Battery in the battery compartment.
- (2) To quickly check the operation of the sound level calibrator.

Proceed as follows:

(a) Turn the power switch from OFF to the 94dB position. The user can start to operate it when LED indicates a green light. If there is no light, please replace the battery.

(b) Change the switch from 94dB to 114dB, the dB level will increase by 20. You can calibrate in noisy environments and check linearity.

## 7. Calibration Procedure



- (1) The cavity of the calibrator will accommodate 1-inch microphone.
- (2) When the calibration is performed to an instrument with 1/2-inch microphone, the 1/2-inch microphone adaptor will have to be inserted by gently pushing it into the cavity till the end.
- (3) Place the sound level calibrator over the microphone of the sound measuring instrument

being calibrated.

- (4) On the instrument under test, set the level range control to the range having 100dB as its upper limit if 94dB was selected on the sound level calibrator. If 114dB was selected on the sound level calibrator, choose a range with an upper limit of 120dB. The instrument may be set to FAST or SLOW response and C or A weighting.
- (5) Read the level on the instrument under test and adjust the sensitivity control for the correct indication of the sound level calibrator level selected in step.
- (6) When the calibrator is not being used, please switch OFF the power to save the battery.

**CAUTION!**

Ambient sources of noise or vibration can cause a false calibration indication; this can be especially significant at the lower 84dB level.



### Limited One-Year Warranty

B&K Precision Corp. warrants to the original purchaser that its products and the component parts thereof, will be free from defects in workmanship and materials for a period of one year from date of purchase.

B&K Precision Corp. will, without charge, repair or replace, at its option, defective product or component parts. Returned product must be accompanied by proof of the purchase date in the form of a sales receipt.

To obtain warranty coverage in the U.S.A., this product must be registered by completing a warranty registration form on [www.bkprecision.com](http://www.bkprecision.com) within fifteen (15) days from purchase

**Exclusions: This warranty does not apply in the event of misuse or abuse of the product or as a result of unauthorized alterations or repairs. The warranty is void if the serial number is altered, defaced or removed.**

B&K Precision Corp. shall not be liable for any consequential damages, including without limitation damages resulting from loss of use. Some states do not allow limitations of incidental or consequential damages. So the above limitation or exclusion may not apply to you.

This warranty gives you specific rights and you may have other rights, which vary from state-to-state.

B&K Precision Corp.  
22820 Savi Ranch Parkway  
Yorba Linda, CA 92887  
[www.bkprecision.com](http://www.bkprecision.com)  
714-921-9095





## Service Information

**Warranty Service:** Please return the product in the original packaging with proof of purchase to the address below. Clearly state in writing the performance problem and return any leads, probes, connectors and accessories that you are using with the device.

**Non-Warranty Service:** Return the product in the original packaging to the address below. Clearly state in writing the performance problem and return any leads, probes, connectors and accessories that you are using with the device. Customers not on open account must include payment in the form of a money order or credit card. For the most current repair charges please visit [www.bkprecision.com](http://www.bkprecision.com) and click on "service/repair".

Return all merchandise to B&K Precision Corp. with pre-paid shipping. The flat-rate repair charge for Non-Warranty Service does not include return shipping. Return shipping to locations in North America is included for Warranty Service. For overnight shipments and non-North American shipping fees please contact B&K Precision Corp.

B&K Precision Corp.  
22820 Savi Ranch Parkway  
Yorba Linda, CA 92887  
[www.bkprecision.com](http://www.bkprecision.com)  
714-921-9095

**Include with the returned instrument your complete return shipping address, contact name, phone number and description of problem.**