

## Installation Instructions for the Compass Module

Doc. Number 072-40353

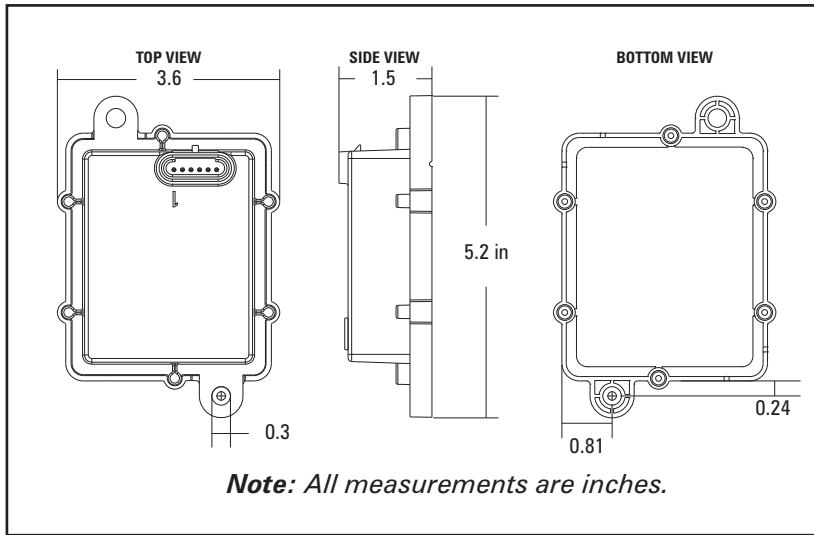


Figure 3

### If you need assistance...

Free telephone assistance is available Monday through Friday from 7 a.m. to 4:30 p.m. Mountain time.

AMETEK Dixson Product Support  
287 27 Road, Grand Junction, CO 81503  
Phone: (800) 205-7710  
E-Mail: [info.dixson@ametek.com](mailto:info.dixson@ametek.com)

Every effort has been made to keep the information in this document current and accurate as of the date of publication or revision. However, no guarantee is given or implied that the document is error-free or that it is accurate with regard to any specification. AMETEK Dixson reserves the right to modify product designs and specifications without notice.



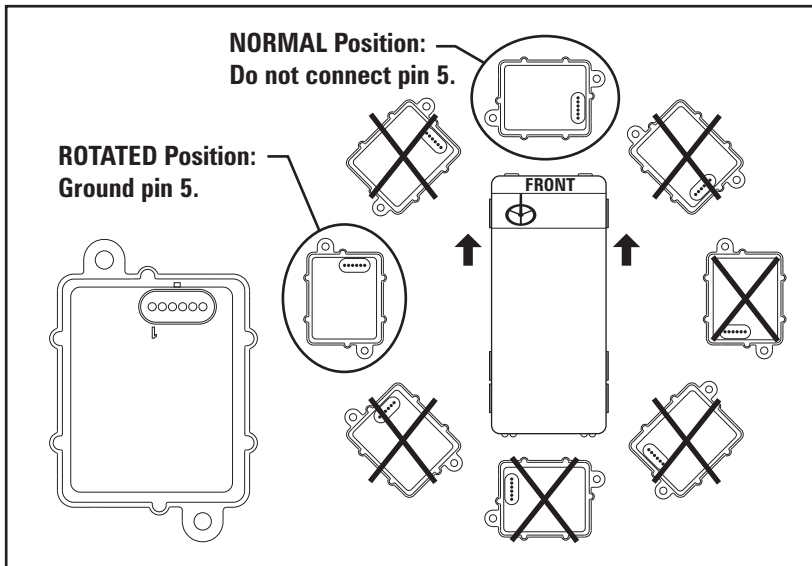


Figure 1

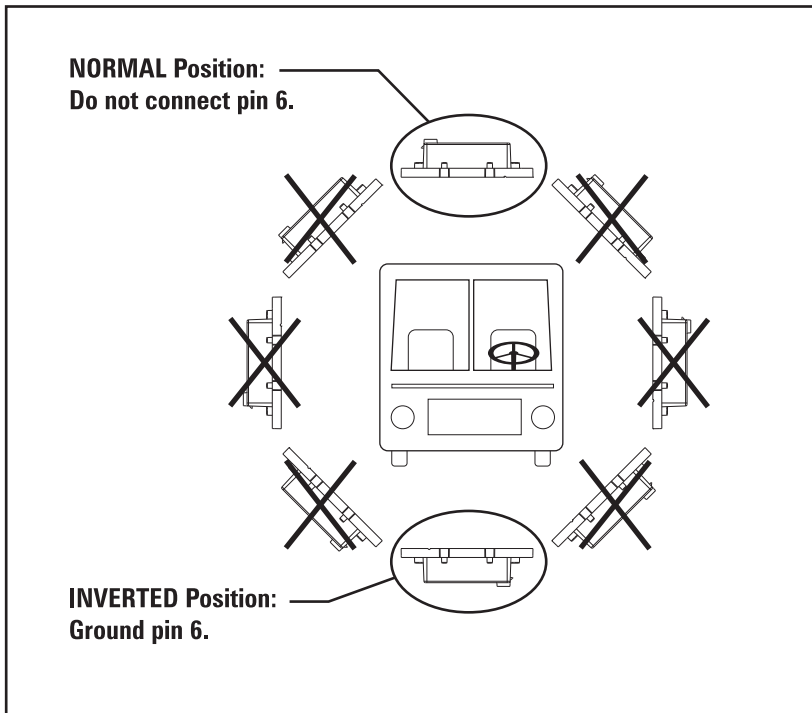


Figure 2

**Follow these steps to install the Compass Module:**

1. With the vehicle on level ground, find a suitable location inside the cab on which to install the module. Do not mount it near heavy wiring or motors. A recommended location is near the roof of the vehicle.
2. Install the module with the connector end toward the right-hand side of the vehicle (normal position) or toward the front (rotated position) as shown in Figure 1. The module can also be mounted with the connector side up or down (inverted position) as shown in Figure 2. Regardless of how the module is mounted, it **MUST** be level both left-to-right and front-to-back.
3. Secure the module with two bolts up to 1/4-inch diameter. The bolts should be torqued to 20 inch-pounds. The module does not require rubber mounting.
4. Wire the 6-pin connector as follows (see Figure 3):
  - a. Connect pin 1 of the mating connector to battery voltage that is available when the ignition switch is on.
  - b. Connect pin 2 to a good vehicle ground.
  - c. Connect pin 3 to the positive side of the J1708 data bus.
  - d. Connect pin 4 to the negative side of the J1708 data bus.
  - e. If the module is mounted with the connector toward the right side of the vehicle, do not connect anything to pin 5. If mounted with the connector toward the front of the vehicle (rotated position), connect pin 5 to vehicle ground.
  - f. If the module is mounted with the connector facing up, do not connect anything to pin 6. If mounted with the connector facing down, connect pin 6 to vehicle ground.

That's it! Now the module can be calibrated to compensate for the magnetic characteristics of the vehicle and its location relative to the north pole. To do this, follow the instructions under the Compass Calibrate function of the Light Bar Message Center.

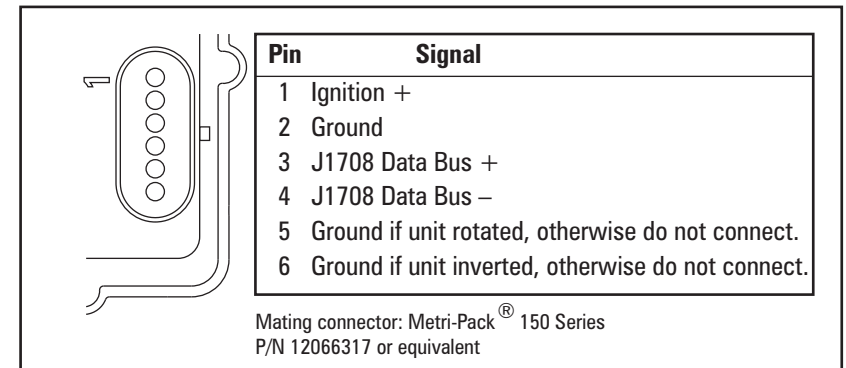


Figure 3