

## CAN Communications C-COM 2A and 3A Sealed Gauges

- Product Overview:

- Sealed to IP67

- Gauge Mounting – Screw-on clamp

- Integral Warning Light in each gauge

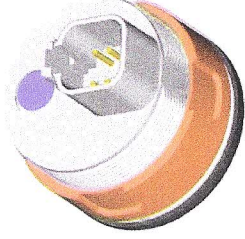
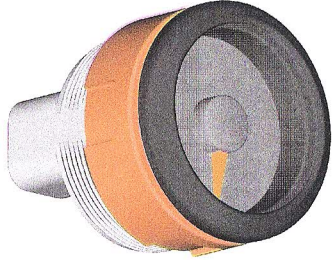
- Wire harness will be Stub harness or Y harness

- LEDs all white with color decals/filters for gauge backlighting

- Backlighting controllable with either CAN Bus or PWM input

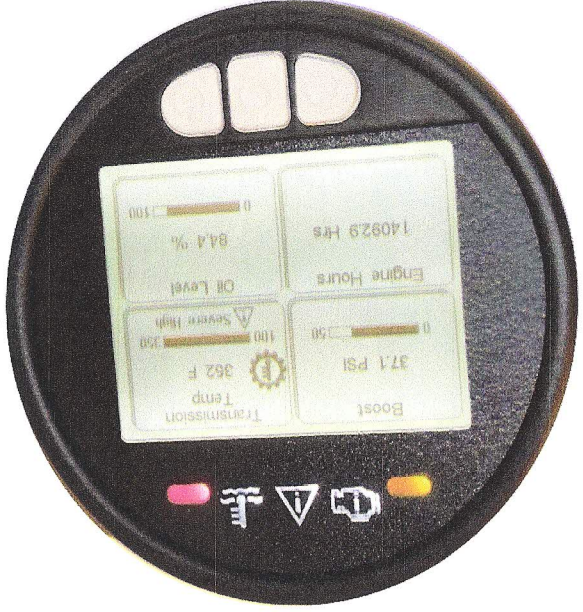
- Heavy Duty Stepper Motor Drive (High G force)

- Direct J1939 CAN communication



# CAN Communications Module C-COM 5G (5-inch Graphical)

- **Product Overview:**
  - 320 by 240 pixel graphic LC display
  - 2 dead-fronted LED warning indicators (amber or red)
  - 3 telltale icons
  - Sealed to IP67 specifications front and rear
  - Backlit LCD and switches
- **Activations:**
  - 1 switched-to-ground output, 500mA max
  - 6 inputs (analog, STB, STG, pulsed, PWM)
  - 9 to 32 volt operation
  - SAE J1939 CAN data bus communication

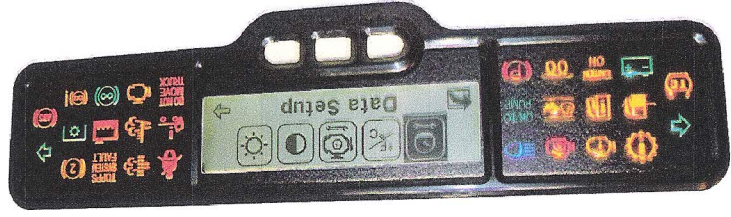


## C-Com Family Expansion

- Current Products
  - C-Com 2G (2" Graphical)
- New Products
  - C-Com 5G (5" Graphical)
  - C-Com 2A (2" Analog)
  - C-Com 3A (3" Analog)
  - C-Com LMC (Light bar Message Center)
- Key Attributes
  - IP67 sealed
  - Direct data bus readable



## CAN Communications Lightbar Message Center (LMC)



- **Product Overview:**

- Graphics LCD 340 x 90 with heater

- 28 white LED telltales (color in decal)

- Sealed to IP67

- J1939 CAN data bus communication

- Blackout mode via CAN message or switched input

- Can be used with existing NGI gauges

- **Activations:**

- Input switches (7 active high, 5 active low, 7 analog)

- 2 Output switches (active low 500mA)

- 9 to 32 volt operation

- 40 pin sealed connector

