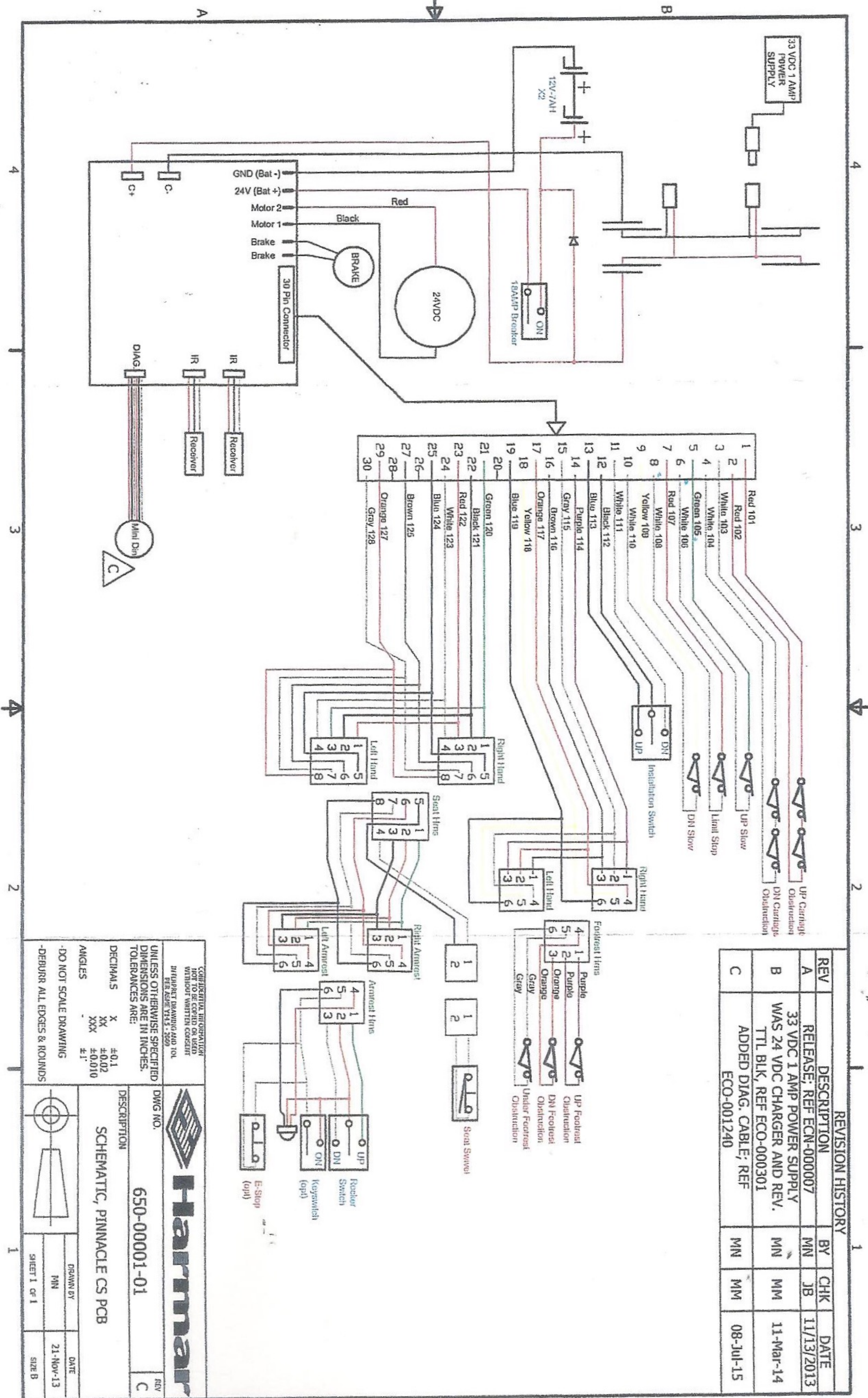


For reference only: Service attempt by unqualified personnel may result in serious injury or death



REV	DESCRIPTION	BY	CHK	DATE
A	RELEASE; REF ECN-000007	MN	JB	11/13/2013
B	33 VDC 1 AMP POWER SUPPLY WAS 24 VDC CHARGER AND REV. TTL BLK, REF ECO-000301	MN	MM	11-Mar-14
C	ADDED DIAG. CABLE; REF ECO-001240	MN	MM	08-Jul-15

CONFIDENTIAL INFORMATION
 NOT TO BE COPIED OR USED
 WITHOUT WRITTEN CONSENT
 PER ASME Y14.5 - 2009

Harmar

DWG NO. 650-00001-01

DESCRIPTION: SCHEMATIC, PINNACLE CS PCB

REVISION: C

DECIMALS: X ±0.1, XX ±0.02, XXX ±0.010

ANGLES: . . . E.I.

-DO NOT SCALE DRAWING

-DEBURR ALL EDGES & ROUNDS

DATE: 21-Nov-13

SIZE: B