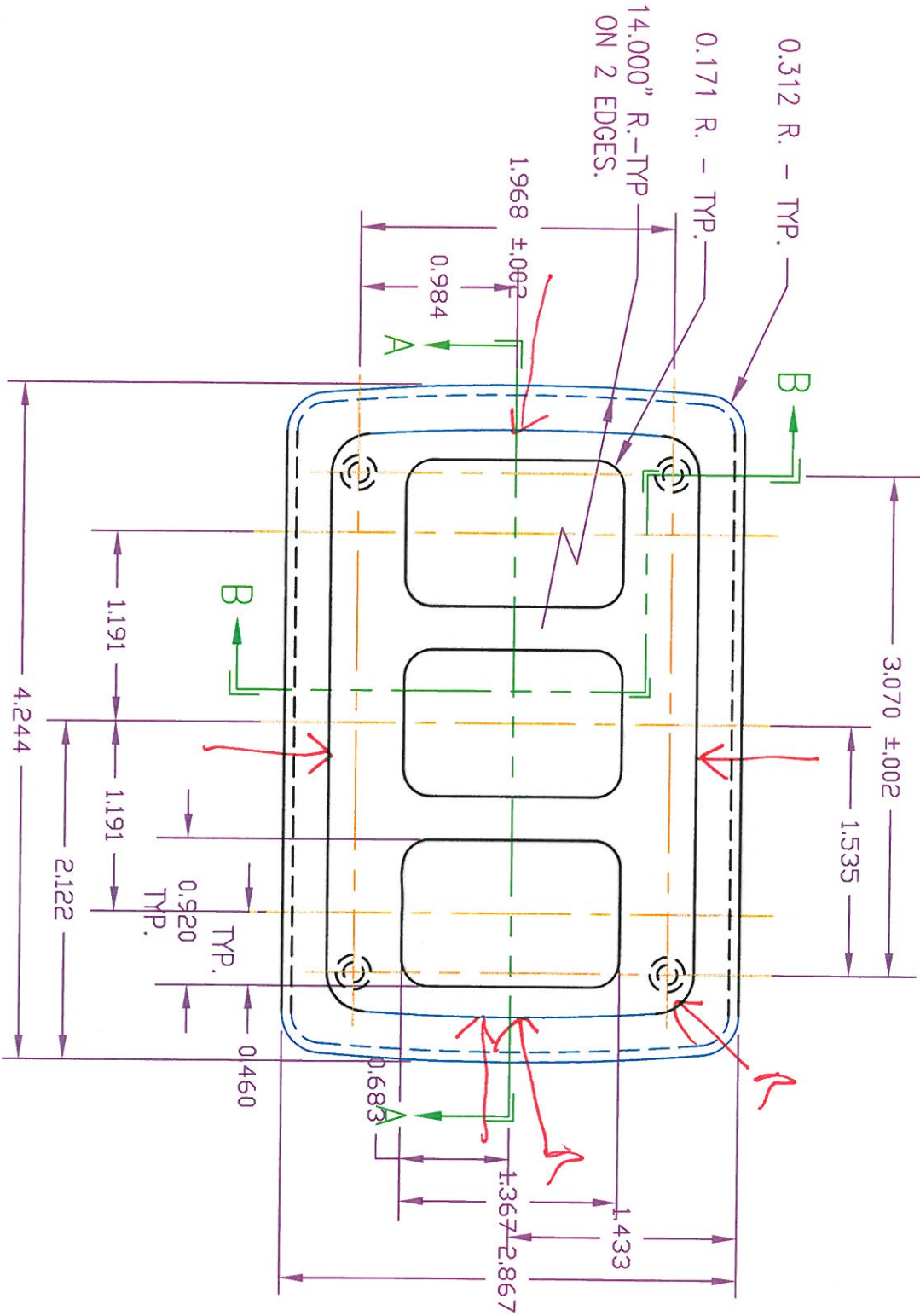


PRODUCTION REVISIONS		
REV.	DESCRIPTION	DATE BY



CONFIDENTIALITY STATEMENT

THIS DRAWING IS THE PROPERTY OF AMERICAN TECHNOLOGY COMPONENTS, INC. IT IS ONLY TO BE USED IN CONJUNCTION WITH ATC, INC. IT SHALL NOT BE COPIED IN ANY WAY, DUPLICATED, OR SUBMITTED TO OTHER PARTIES WITHOUT OUR WRITTEN CONSENT.

STEP	PROCESS	NEXT

APPROVALS	INITIAL	DATE
ENGINEERING		
MANUFACTURING		
SALES DEPT		
CUSTOMER		

SCALE	REV.	DATE
1:1	A	

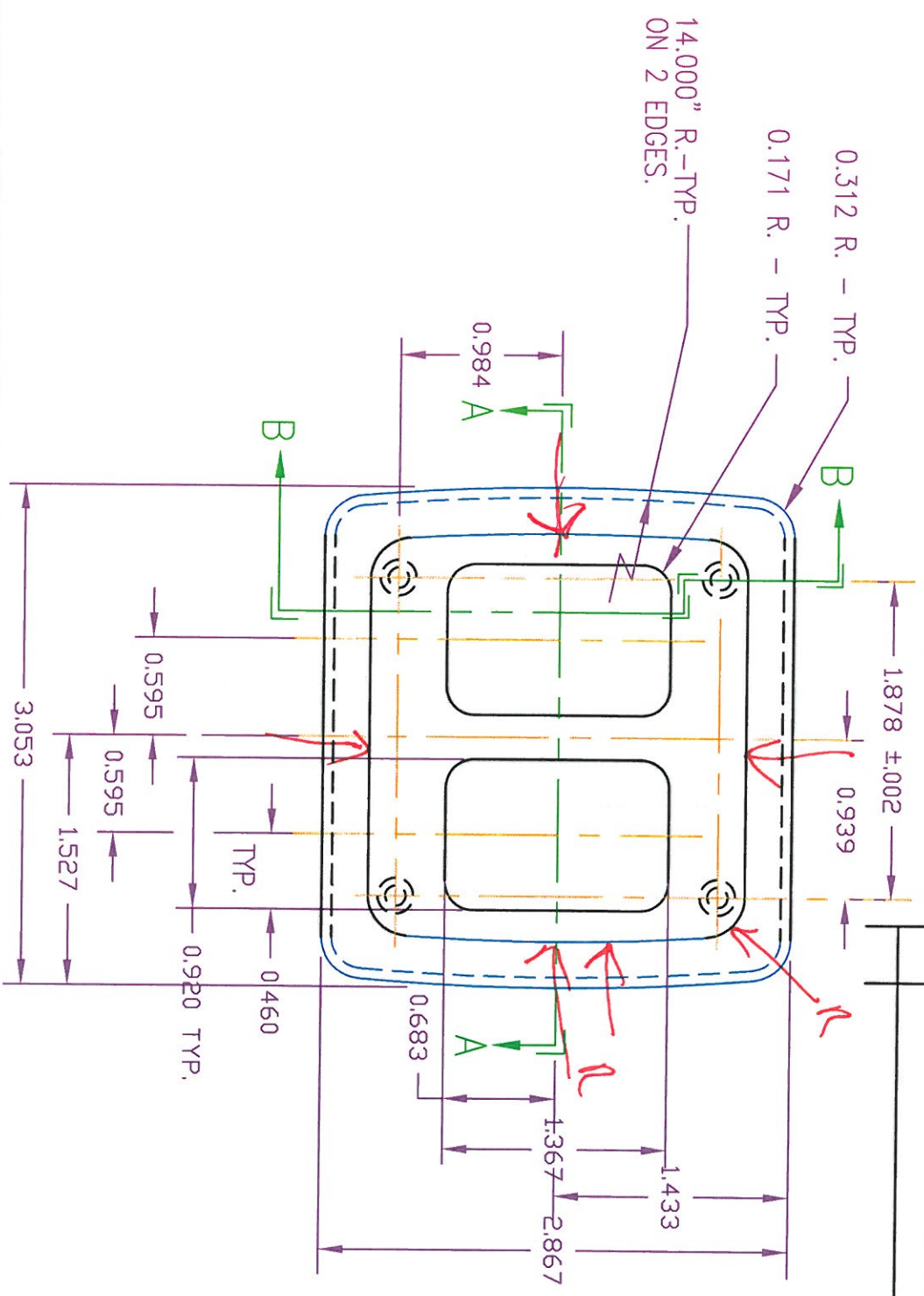
UNIT	SIZE	DRN BY
IN	A	

AMERICAN TECHNOLOGY COMPONENTS, INC.
 2906 LaVenture Place, Elkhart, IN 46514
 PH (574) 262-1258 FAX (574) 264-9138

TITLE:
 TRIPLE BEZEL

PART NO:
 AH-BZL-3

PRODUCTION REVISIONS			
REV.	DESCRIPTION	DATE	BY



CONFIDENTIALITY STATEMENT

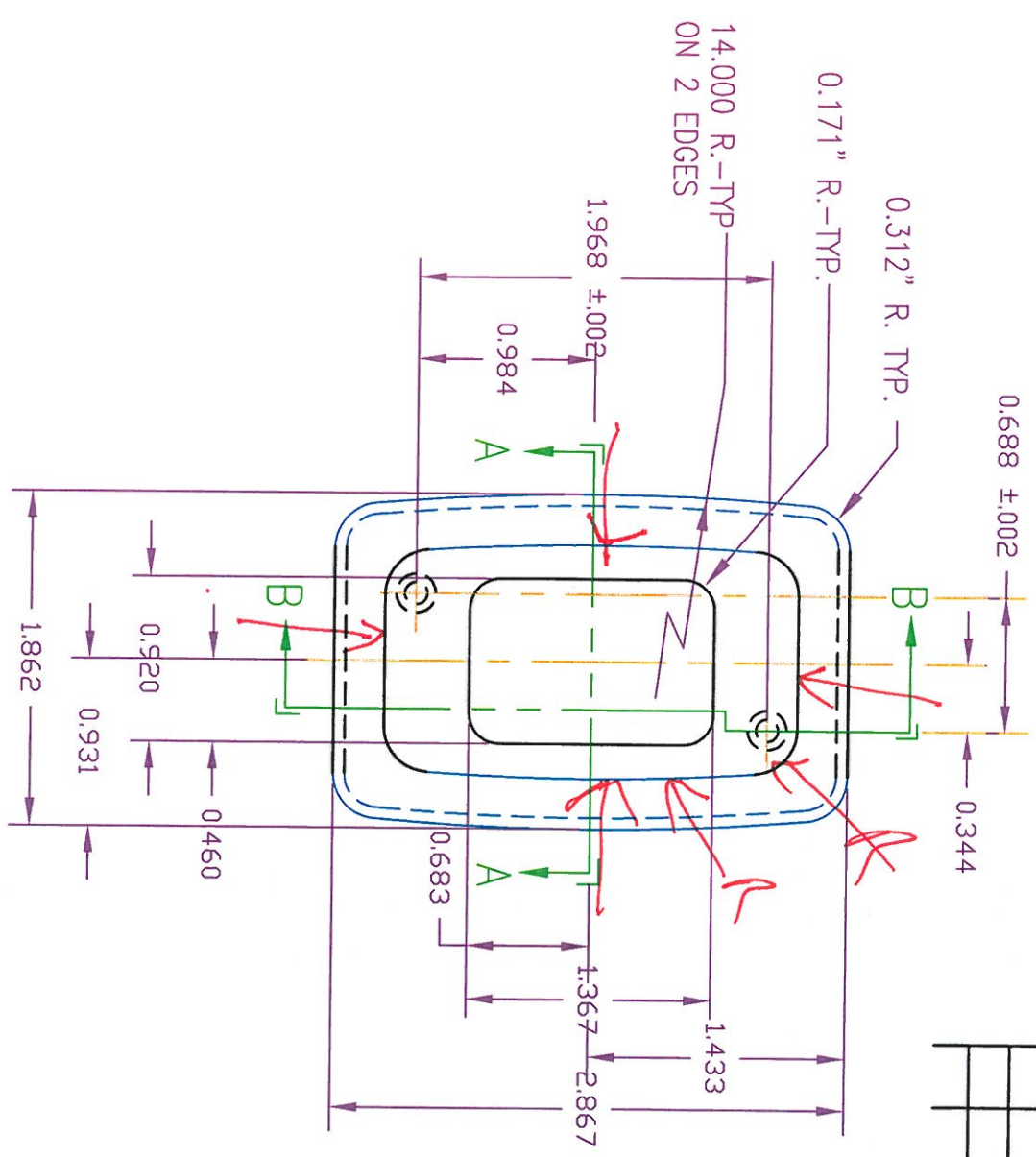
THIS DRAWING IS THE PROPERTY OF AMERICAN TECHNOLOGY COMPONENTS, INC. IT IS ONLY TO BE USED IN CONJUNCTION WITH ATC, INC. IT SHALL NOT BE COPIED IN ANY WAY, DUPLICATED, OR SUBMITTED TO OTHER PARTIES WITHOUT OUR WRITTEN CONSENT.

STEP	NEXT	APPROVALS	INITIAL	DATE
		ENGINEERING		
		MANUFACTURING		
		SALES DEPT		
		CUSTOMER		

PROCESS		APPROVALS		INITIAL	DATE	SCALE:	REV:	TITLE:	
		ENGINEERING				1:1	A	AMERICAN TECHNOLOGY COMPONENTS, INC.	
		MANUFACTURING				UNIT: IN	A	2905 LaVenture Place, Elkhart, IN 46514	
		SALES DEPT				ANG TOL: XX ± .02		PH (574) 262-1238 FAX (574) 264-9138	
		CUSTOMER				X ± 1°		DOUBLE BEZEL	
						X ± .5°		PART NO:	AH-BZL-2



PRODUCTION REVISIONS			
REV.	DESCRIPTION	DATE	BY



CONFIDENTIALITY STATEMENT

THIS DRAWING IS THE PROPERTY OF AMERICAN TECHNOLOGY COMPONENTS, INC. IT IS ONLY TO BE USED IN CONJUNCTION WITH ATC, INC. IT SHALL NOT BE COPIED IN ANY WAY, DUPLICATED, OR SUBMITTED TO OTHER PARTIES WITHOUT OUR WRITTEN CONSENT.

PROCESS		APPROVALS		INITIAL	DATE	SCALE:	REV:	AMERICAN TECHNOLOGY COMPONENTS, INC.	
STEP	NEXT	ENGINEERING	MANUFACTURING			1:1	A	2905 LaVenture Place, Elkhart, IN 46514 PH (574) 262-1238 FAX (574) 264-9138	
						UNIT: IN	SIZE: A	TITLE: SINGLE BEZEL	
						DIM TOL: .XX ± .02 .XXX ± .005	DRN BY: A	PART NO: AH-BZL-1	
						ANG TOL: X ± 1° X ± .5°	DATE:		
GMF 36 Rev. 1		SALES DEPT		CUSTOMER					