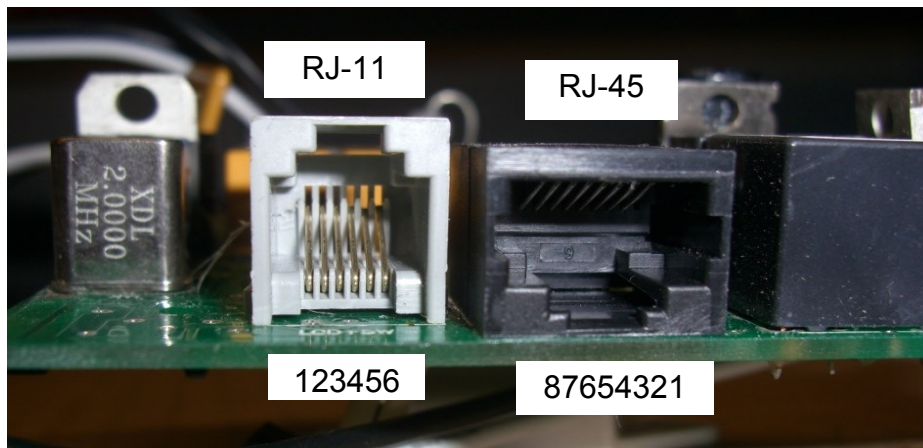
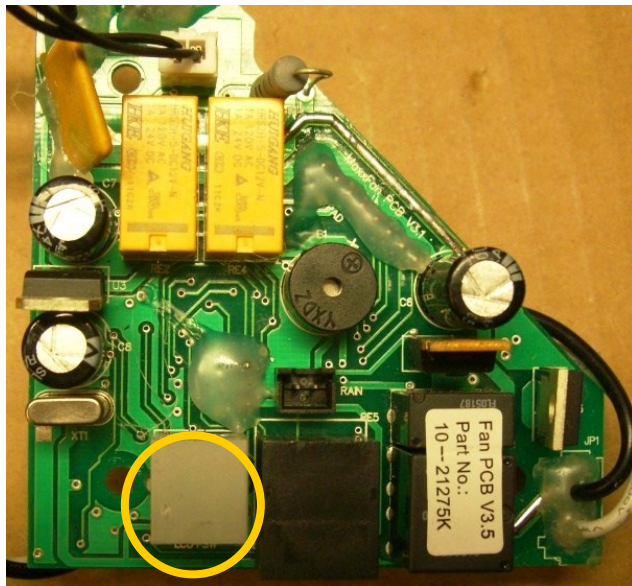


MAXXAIR  
MAXXFAN "K" Models  
Pin Out for "K" PCB V3.5 —3.9

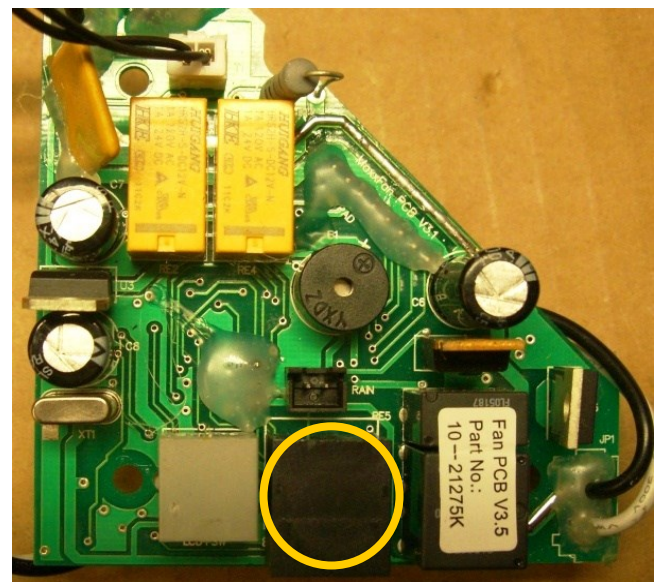


Version 3.5 thru  
Version 3.9 PCBs  
have one (1) RJ-  
11 Jack and one  
(1) RJ-45 Jack



Version 3.5 thru 3.9 PCB  
RJ-11 Jack

**MOMENTARY** contact between Pins  
2 & 4 will turn the Fan ON & OPEN  
Lid (& cycle thru 4 speeds)  
**MOMENTARY** contact between Pins  
2 & 5 will turn the Fan OFF &  
**CLOSE** Lid  
**MOMENTARY** contact between Pins  
3 & 4 will **OPEN** the Lid  
**MOMENTARY** contact between Pins  
3 & 5 will **CLOSE** the Lid



Version 3.5 thru 3.9 PCB  
RJ-45 Jack

**MOMENTARY** contact between Pins  
2 & 3 will toggle the Fan ON & OFF  
**MOMENTARY** contact between Pins  
1 & 3 will increase the speed 10%  
**MOMENTARY** contact between Pins  
1 & 4 will decrease the speed 10%  
**MOMENTARY** contact between Pins  
2 & 4 will Change the Fan Direction  
**MOMENTARY** contact between Pins  
2 & 5 will put the Fan in 'Auto' mode  
**MOMENTARY** contact between Pins  
1 & 3 & 4 will toggle the Fan OPEN &  
**CLOSED**