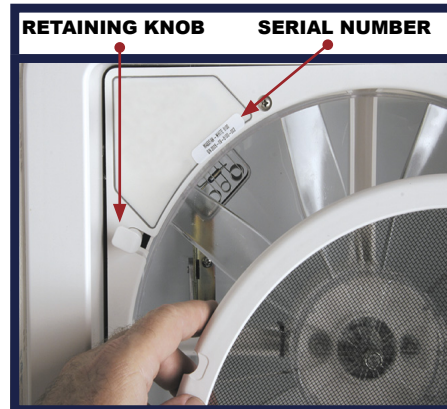


MAXFAN 2 YEAR Limited Warranty

AIRXCEL, INC. - RV PRODUCTS DIVISION / MAXXAIR Ventilation Solutions warrants to be free of manufacturing defects, regardless of ownership for a period of two (2) years from the original date of purchase. **You must keep your original sales receipt.** This **Limited Warranty** does not include "Acts of God," failure due to misuse, improper installation or accidental / incidental damages. Please call AIRXCEL, INC. at 1-316-832-4357 if you have any questions or need assistance. **Please have your original sales receipt and MAXXFAN Serial Number readily available.** AIRXCEL will correct the confirmed defect within 45 days by repair or replacement without charge for materials and labor. This limited warranty does not cover any freight costs for the return of the product to or from AIRXCEL, INC. or costs associated with installation, removal or reinstallation of the product.

We invite your comments and suggestions regarding our products. Any information you supply is for AIRXCEL / MAXXAIR's internal use and will not be shared or sold to others.

The Serial Number for your MAXXFAN is located on the fan control plate under the round insect screen frame. Reference your operating guide. Rotate the four retaining knobs 180° and remove the screen to view. **DO NOT OPERATE** the MAXXFAN with the screen removed.



CAUTIONS AND CARE OF YOUR MAXXFAN®

This product has been manufactured using prime UV stabilized Polymers for maximum toughness and durability. However, the use of caustic or solvent based chemicals can cause cracking and product failure.

PLEASE CLEAN ALL PARTS WITH MILD SOAP AND WATER ONLY.

Do not use Petroleum Containing Additives or Solvent Based Products on any of the MAXXFAN's components or its corrosion resistant hardware.

LISTED BELOW ARE SOME KNOWN CHEMICAL PRODUCTS TO BE AWARE OF:

NON COMPATIBLE CHEMICALS - DO NOT USE THESE:

Keytones, Esters, Acetone or other like solvents, Halogenated Hydrocarbons, Amines, Aromatic Hydrocarbons, (Loctite Formulas), or any products containing references to: chemicals that are not to be used on plastics.

GENERALLY COMPATIBLE (But should be used in low concentration where possible)

Acids, Alcohol, Alkalis, Aliphatic Hydrocarbons, Mild Soap Solution (avoid strong Alkaline Material), Silicone Oil or Greases (avoid those containing Aromatic Hydrocarbons or other additives). Review the contents of your cleaning materials carefully.

For additional information regarding your NEW MAXXFAN, please refer to the enclosed **INFORMATION AND OPERATING GUIDE**

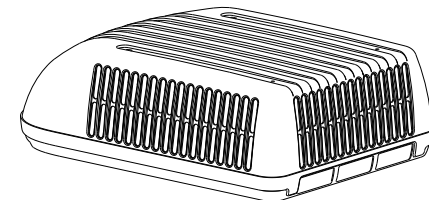
TUFF/MAXX™

The **LAST A/C SHROUD** you will
EVER have to BUY!

- Replaces Coleman®-Mach® 11,000, 13,500 and 15,000 BTU covers (Mach 1, Mach 3 and Mach 15 models)
- Features built-in rear fin guard and extra tough, UV protected plastic
- LIFETIME Limited WARRANTY to original owner (proof of purchase required)*

*Limited to replacement only by MAXXAIR

P/N: 00-325001 Polar White Tuff/Maxx®



Coleman is a registered trademark of the Coleman Co., Inc.



For additional product information please visit www.RVComfort.com

AIRXCEL, INC. - RV Products Division / MAXXAIR • 3050 N. St. Francis St. • Wichita, KS 67219 • 316-832-4357

MAXFAN®

INSTALLATION INSTRUCTIONS - DELUXE MODEL SERIES 5100K, 6200K, 7000K & 7500K



Pat. No. 7,004,832

NOTE: Refer to supplied Operating Instructions regarding the model you have purchased.

The **MAXXFAN** installs into a standard RV roof opening of 14 by 14 inches.

To determine if your roof opening is correctly sized, simply remove the interior ceiling garnish trim ring of your existing roof vent and measure the ceiling opening or verify the opening is large enough by sliding the **MAXXFAN** interior garnish trim ring into the opening.

Due to the EXHAUST / INTAKE LOUVERS that face the rear of the vehicle, the MAXXFAN requires a roof area clear of obstructions such as air conditioners, storage boxes, etc. for at least 8 inches to the rear of the existing standard roof vent flange outer rear edge.

The **MAXXFAN** is designed for a minimum roof thickness of 1 1/8 inches to a maximum of 6 1/2 inches. If your roof thickness is less than 1 1/8 inches, build additional thickness at the ceiling opening using wood or other suitable material.

The **MAXXFAN** requires a minimum 12 Volt DC, 5 amp service. Confirm that the circuit you intend to use will accommodate the additional load. Use the proper gauge stranded wire for electrical connections.

MAXAIR

VENTILATION SOLUTIONS

WARNING! To reduce risk of fire, injury to persons or damage to property, use only in the manner intended by AIRXCEL, INC. Should you have questions, please contact AIRXCEL/MAXXAIR VENTILATION SOLUTIONS Customer Service at 316.832.4357.

AIRXCEL P/N: 1976-672

P/N: 10-21273
REV NEW, 05-01-2014

STEP 1

MAXXFAN requires a 14" x 14" roof opening, if you are replacing another type already installed, remove the old existing roof vent. Remove all old roof sealant for a minimum of 2" entirely around the roof opening.

Place the **MAXXFAN** Roof Receiving Flange (reference photo #2 below) into the roof opening and trace a pencil line around it to verify the clean seal area that will be required. Note that the Roof Receiving Flange must be centered in the roof opening with the metal clips facing the sides of the vehicle (not facing the front or rear of the vehicle).

CAUTION: When installing your Roof Flange, only use a caulking/sealant compatible with the flange (plastic product) and the roof surface. DO NOT use materials containing solvents such as or similar to Xylene, Toluene, Methyl Ethyl Ketone, Acetate or Acetone as they can damage the flange. Also, Polysulfide (Thiokol) type sealants must be avoided. Silicone Sealants such as G.E. Silicone II (non-paintable) used for outdoor applications have proven to be suitable for this installation.

If in doubt, please contact the manufacturer of your RV for further information.

STEP 2

Apply Sealant or Caulking within the area you have traced on the roof with a pencil. Apply it carefully to avoid gaps that may allow water to enter.

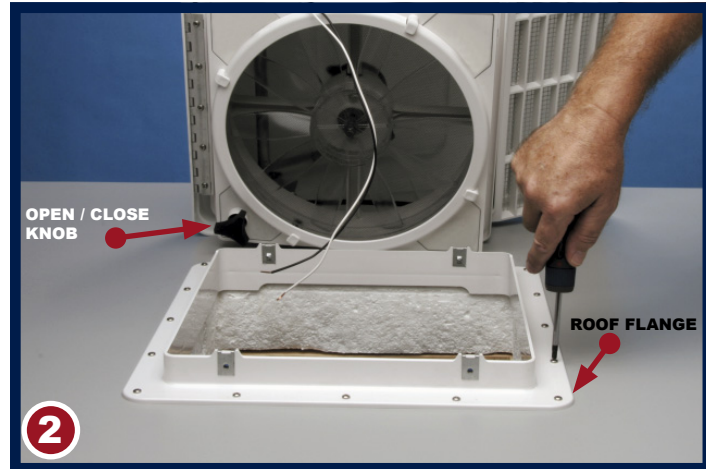
Fasten the Roof Receiving Flange to the roof with screws provided.

Apply additional roof sealant over the screw heads and around the edge of the roof flange.

CAUTION: Disconnect main vehicle power before connecting 12 volt DC power to the **MAXXFAN**!

NOTE: The **MAXXFAN** must be fully opened prior to proceeding to STEP 3. Turn knob to fully raise the vent lid.

NOTE: On the NON-REMOTE controlled models, the knob must be pulled out to unlock before turning.



STEP 3

Using the insulated 16 gauge electrical connectors provided, connect the vehicle's 12 volt power to the two **MAXXFAN** power wires located on the driver side of the **MAXXFAN**.

NOTE: The **MAXXFAN** black wire identified with a tag showing (+) must be connected to the vehicle 12 volt (+) positive supply.

STEP 4

Confirm the 4 metal mounting clips are firmly in place on the Roof Receiving Flange. With the MAXXFAN open and the exhaust/intake louvers facing the rear of the vehicle, lower the MAXXFAN onto the Roof Receiving Flange.

Make sure the power wires slide to the vehicle interior and do not become entangled on the Roof Receiving Flange's upward edge.

STEP 5

Verify the MAXXFAN is fully seated down on the Roof Receiving Flange and fasten the MAXXFAN to the Roof Receiving Flange using the four 3/4" long by #10 stainless steel screws provided.

CAUTION: Only use the screws provided/specified for this installation or internal damage and/or insecure mounting may result.



THIS COMPLETES THE ROOF TOP PORTION OF THE INSTALLATION

NOTE: Re-apply 12 volt vehicle power. The **MAXXFAN** will emit a beep sound to indicate power is properly connected. In addition, the Remote Control model will automatically close the vent cover. If the MAXXFAN does not beep when power is connected, go back to step #3. Confirm that proper connections were made and 12 volt power is on and available. This MAXXFAN incorporates a self-resetting fuse on the circuit board located in the ceiling assembly. It can be reset by removing and re-applying power. If your fan fails to operate or needs reset, contact Customer Service at 316.832.4357 for assistance or solicit the aid of an electrical technician.

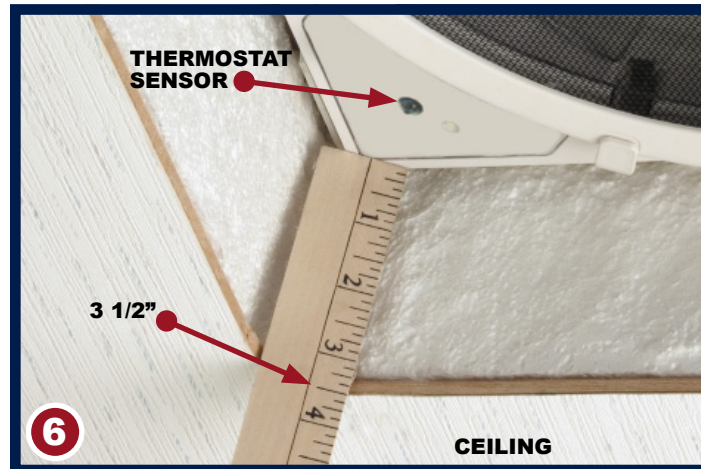
FOR REMOTE CONTROL MODELS: Refer to the Operating Instructions for use and testing of your remote control. Install two AAA batteries, follow instructions, aim remote at the ceiling unit and test your fan. The Remote Control comes with a cradle for wall mount storage of the Handheld Remote Control. Mount the cradle to your wall using the screws provided.

STEP 6

The interior Garnish Trim Ring must be trimmed to fit your particular RV roof thickness. To accomplish this, measure the distance from the vehicle ceiling surface to each corner of the **MAXXFAN** Control Plate.

Most RV roofs have some slope, so measuring each corner is necessary. The Garnish ring should be cut 1/4" to 1/2" longer than the dimensions measured at each corner.

In Picture #6 below, the installation measures 3 and 1/2" from the ceiling (this is an example only) to the Control Plate. After adding 1/2" as in this example, using a ruler, place a mark at 4" on each corner of each side of the Garnish Ring (refer to 6A, right). Once marked, draw a line connecting all 4" marks on the outside of the Garnish ring and trim accordingly (refer to 6B, right).



NOTE: DO NOT probe or tamper with the thermostat sensor or IR sensor shown in illustration #6 above.



STEP 7

Complete the installation by placing any excess wiring to the inside of the roof opening and sliding the Garnish Ring into position. Fasten in place by using the four painted flat head screws provided.



ON REMOTE CONTROL MODELS:

Attach the included cradle to wall with (2) #6 screws provided. Handheld Remote Control may be placed into wall cradle for storage.

MEASUREMENTS ABOVE ARE USED AS AN EXAMPLE FOR ILLUSTRATION PURPOSES ONLY

CONGRATULATIONS!!!

You have successfully completed the installation of your new **MAXXFAN**.

If you have questions, please visit RVComfort.com or call us at 316-832-4357