

Smartphone Jukebox

Setup Guide

1. Unpack.....2
2. Set up the Zentral Receiver.....3
3. Pair with the Zentral Receiver.....5
4. Download the App.....7
5. Set up your Smartphone
Jukebox Account8

Using the Smartphone Jukebox.....10

Troubleshooting11

Congratulations!

You're just a few steps from unlocking the true potential of your BlackBerry®, iPhone®, or iPod® touch*, with the Zentral Smartphone Jukebox. Just follow the directions in this Setup Guide—soon you'll have complete control of your iPod music library over your home audio system—from virtually anywhere in the room.

1 Unpack

Before you start, take everything out of the Zentral Smartphone Jukebox package. Make sure you have the following parts:

- the Zentral Smartphone Jukebox Receiver
- a power adapter
- a mini-connector to stereo audio cable
- five universal adapter inserts for iPod

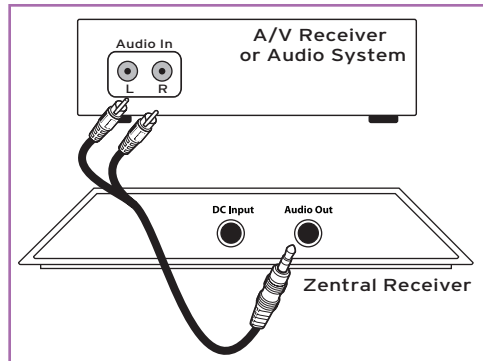
**Requires iPod touch Second Generation or later.*

Set up the Zentral Receiver

The Zentral Smartphone Jukebox Receiver is the link between your BlackBerry, iPhone, or iPod touch and your docked iPod, allowing you to play music from your iPod library on your A/V receiver or other audio system while your iPod charges. The Jukebox gives you complete control over playlists and playback, with song info (such as title, artist, etc.) on your BlackBerry, iPhone, or iPod touch screen.

1. Connect the mini-connector end of the included audio cable to the Audio Out jack on the back of the Smartphone Jukebox Receiver.
2. Connect the red and white jacks on the other end of the included audio cable to the audio input jacks on your A/V receiver or other audio system.

Make sure you match the red jack with the red connector and the white jack with the white connector.



continues on next page...

3. Plug the Zentral Receiver's power adapter into the DC Input jack on the back of the Zentral Receiver. Plug the other end into a standard wall outlet or surge protector.

Note: *This power adapter should stay vertical or lie flat while plugged in.*

The indicator light on the front of the Zentral Receiver flashes while the Zentral Receiver waits to pair with your BlackBerry, iPhone, or iPod touch.

4. Find the included universal adapter insert that fits your iPod. There is a number on the bottom of each adapter insert. Use the following chart to determine which one to use with your iPod.

<i>Adapter insert number</i>	<i>iPod or iPhone models</i>
9	iPod Classic
13	3rd Generation nano
14	iPod touch
15	iPhone 3G and 3GS
18	5th Generation nano

Note: *If you cannot find an adapter insert for your model of iPod, use the adapter insert that came with your iPod.*


5. Place the adapter insert on top of the Zentral Receiver's docking connector.




3 Pair with the Zentral Receiver

Once you've plugged in your Zentral Receiver, you have 10 minutes to pair it with your BlackBerry, iPhone, or iPod touch. (If you can't pair it in that time, just unplug the Zentral Receiver and plug it in again. Now you've got another 10 minutes to pair.)

For BlackBerry Users:

Make sure Bluetooth is on...

1. From your BlackBerry home screen, press the menu key () and select **Manage Connections**.
2. In the Connections menu, locate **Bluetooth**. If it isn't already checked, press the select button to turn it on.

1. From your BlackBerry home screen, press the menu button () and select **Setup** ().
2. In the Setup menu, select **Set Up Bluetooth** ().
3. In the Add Device dialog box, select **Search**. (Make sure you're within 15 feet of the Zentral Receiver.) This search may take a few seconds to finish.
4. When your BlackBerry is finished searching, it displays the Bluetooth devices found. Select **Jukebox xxxx-xxxx Zentral** ("xxxx-xxxx" is the serial number) to connect.
5. The next screen requests a passkey to connect to the Zentral Receiver. Enter "0000" as the passkey and press the select button.

continues on next page...

6. Once you've entered the passkey, your BlackBerry might ask if you want to connect to the AR Zentral Smartphone Jukebox Receiver. Choose **No** (the Zentral App will take care of the connection later).

For iPhone / iPod touch Users:

1. From the home screen on your iPhone or iPod touch, press the Settings icon.

Note: *Zentral Apps work with iPod touch second generation or later only.*

2. In the Settings screen, press **General**.

3. In the General screen, press **Bluetooth**.

4. If Bluetooth is not already on, turn it on. Your iPhone or iPod touch searches for Bluetooth devices nearby. (Make sure you're within 15 feet of the AR Zentral Smartphone Jukebox Receiver.)

When your iPhone or iPod touch is finished searching, it displays the Bluetooth devices it's found. Choose **Jukebox xxxx-xxxx Zentral** ("xxxx-xxxx" is the serial number) to connect to it.

5. The next screen requests a passkey to connect to the AR Zentral Smartphone Jukebox Receiver. Enter "0000".

6. Once you've entered the passkey, your iPhone or iPod touch asks if you want to connect to the AR Zentral Smartphone Jukebox Receiver. Choose **Yes**. The final screen shows you that your iPhone or iPod touch is connected.

Note: *As long as it remains within Bluetooth range of the Zentral Receiver, your iPhone or iPod touch reconnects automatically when you wake it up. If you leave Bluetooth range, you will need to reconnect your iPhone or iPod touch when you return by pressing the Settings icon, choosing **General**, then **Bluetooth**, and finally **Jukebox xxxx-xxxx Zentral** to connect to the Zentral Receiver again.*

4 Download the App

For BlackBerry Users:

1. On your BlackBerry, point your browser to **<http://bbdownloads.ZentralApp.com>**
2. Select **Zentral Jukebox** to download the App.
3. If download does not start immediately, select your BlackBerry model or select **Download** to download the App to your BlackBerry. Once downloaded, the App installs automatically.
4. Select **Run** to start using the App on your BlackBerry. If your BlackBerry asks you to grant AR Smartphone Jukebox trusted App status, select **Yes**. If it asks to allow the App to connect to the ZentralApp.com site, select **Allow**.

***TIP:** For easier access, move the App from the Downloads folder on your BlackBerry to the home screen.*

For iPhone / iPod touch Users:

Go to the App Store and search for “Acoustic Research Zentral Jukebox.” Click on the **FREE** button to install. Enter your App Store password. The application starts installing to your iPhone/iPod touch.

***Note:** If you're getting the app through your computer, you'll have to connect your iPhone or iPod touch and sync it to access the App.*

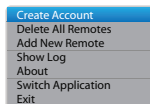
5

Set up your Smartphone Jukebox Account

The first step in using your Smartphone Jukebox App is creating an account.

Note: If you've already set up another Zentral App on this BlackBerry, iPhone, or iPod touch, skip this step. The App automatically detects your account info.

For BlackBerry Users:



1. If the App isn't already running, find the icon for the Zentral Smartphone Jukebox App and select it.

2. Press the  button and select **Create Account**.

3. Fill in the form to create your account. Then click on **Next** to proceed. **Note:** Your password must be at least 8 characters long.

4. Enter an email address you use on your BlackBerry. Then click on **I Accept** to continue.

The App confirms that your account has been created. Now you're ready to start using Smartphone Jukebox.

For iPhone / iPod touch Users:

1. If the App isn't already running, find the icon for the Zentral Smartphone Jukebox App and select it.
2. The App may take a moment to launch the first time you use it. Wait for the **Create Account** option to appear, then select it.
3. Fill in the form to create your account. Then click on **Done** to proceed. **Note:** *Your password must be at least 8 characters long.*

The App confirms that your account has been created. Now you're ready to start using Smartphone Jukebox.

Using the Smartphone Jukebox

When you launch the Smartphone Jukebox application on your BlackBerry, iPhone, or iPod touch make sure your iPod is docked in the Smartphone Jukebox Receiver. If the App hasn't already launched, find the Smartphone Jukebox icon on your smartphone (on a BlackBerry, it might be in the Downloads folder).



The AR Zentral Smartphone Jukebox App might take a few seconds to gather the information from your iPod when you launch it. This is normal.

The App gathers and displays information from your iPod—your playlists and song information.

Operating Your Docked iPod

For BlackBerry users

The **P** button toggles play/pause; **R** is for reverse, and **F** is for forward.

For iPhone / iPod touch users

Use the controls on the application screen in much the same way you would for music on your iPhone or iPod touch.

Troubleshooting

Most common problems with the Zentral Smartphone Jukebox can be solved by trying one of the following solutions. If you have any further questions, please call our help line toll-free at 1-800-732-6866 or visit www.ZentralHomeCommand.com.

I can't pair my BlackBerry, iPhone, or iPod touch with the Zentral Receiver.

The Zentral Receiver is discoverable for 10 minutes after you plug it in. If you haven't paired it with your smartphone in that time, unplug the Zentral Receiver and plug it back in.

I can't download the App.

Make sure have a strong signal (WiFi or mobile). If you're using a corporate account on your smartphone, you might need to ask your IT department to allow this App to be downloaded. If you still can't download the App, call the technical support line for your mobile carrier.

The App won't install on my BlackBerry or iPhone.

If you're using a corporate account on your smartphone, you might need to ask your IT department to allow this App to be installed. If you still can't install the App, call the technical support line for your mobile carrier.

My iPhone or iPod touch won't reconnect with the Zentral Receiver.

As long as it remains within Bluetooth range of the Zentral Receiver, your iPhone or iPod touch reconnects automatically when you wake it up. If you leave Bluetooth range, you will need to reconnect your iPhone or iPod

touch when you return by pressing the Settings icon, choosing **General**, then **Bluetooth**, and finally **Jukebox xxxx-xxxx Zentral** to connect to the Zentral Receiver again.

If your iPhone or iPod touch doesn't connect the first time you press **Jukebox xxxx-xxxx Zentral**, press it again.

I can't control my iPod.

Make sure you're within Bluetooth range of the Zentral Receiver—start close to the Zentral Receiver with nothing between you and it. If you still can't control the iPod, remove it from the dock and confirm that you are using the appropriate insert for the model of iPod you have. Check for any obstructing debris. Then reinsert iPod into the docking port and establish a secure connection.

I can't hear music from my iPod.

Check the connection between the Zentral Receiver and your audio system. Make sure the mini connector is in the Audio Out jack on the Zentral Receiver and the red and white connectors are in the red and white jacks on your audio system. Make sure you've connected the Zentral Receiver to the correct jacks to play music on your audio system (inputs, not outputs).

©2010 Audiovox Accessories Corporation
111 Congressional Blvd., Suite 350
Carmel, IN 46032

www.ZentralHomeCommand.com
ARIZ02 English OM 01

BlackBerry is a registered trademark of RIM, Research In Motion Limited. iPhone and iPod are registered trademarks of Apple Inc. Bluetooth is a registered trademark of Bluetooth SIG, Inc. All other product and service names are trademark of their respective owners.