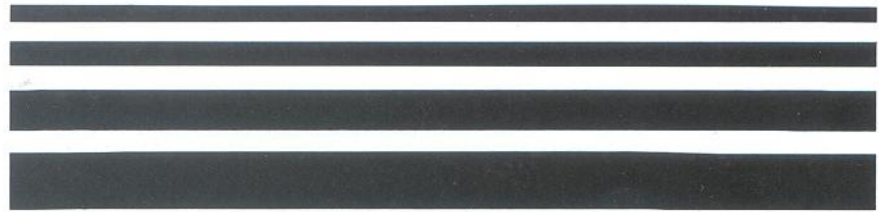




88



AR · BECAUSE

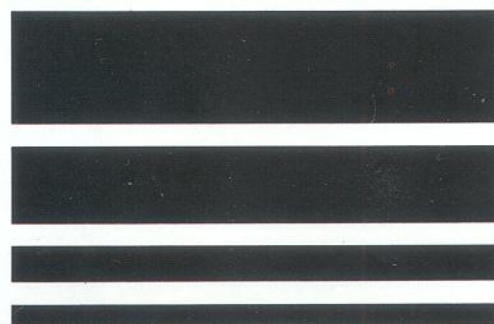
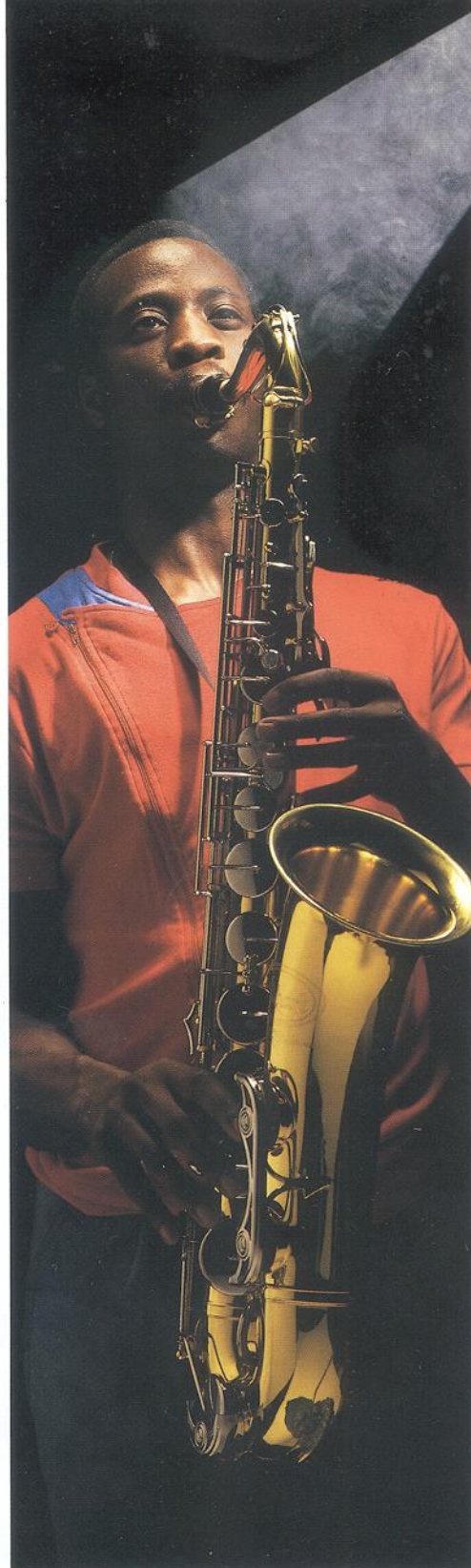
Music is a medium which transcends language barriers and communicates its message regardless.

Reproduced music can also transcend those same barriers, but inadequate equipment will, quite simply, not get the message across. For instance, the saxophone, surely one of the most sensuous instruments, will simply sound flat, dull and inarticulate through a poor hi-fi system.

At AR we've been studying the complex subject of psycho-acoustics, analysing the way we perceive sound, particularly from loudspeakers, to push forward the frontiers of acoustic engineering and help create more realistic sounds in real listening environments.

We've used intellect, powerful computers, and the latest technology to bring AR's legendary quality and consistent performance to a wide audience.

That's why AR is the logical choice for music lovers the world over.







• THE LEGEND • THE AREB101 •



• THE AR TONEARM •



• ARLSM • AR6BX • AR8BX • AR18BX • AR22BX •

All AR loudspeakers, from the diminutive AR6BX to the magnificent AR66BX, have been designed with the same objectives, natural sound reproduction in real listening environments. Each model uses the highest quality components in strong, rigid cabinets for consistent performance, optimum sound, longevity and good looks.

The top two models feature real walnut veneer, while the rest of the range are finished in a natural-looking and pleasing walnut-grain vinyl.

With the advent of digital recording techniques, and Compact Disc in particular, it has become vital that loudspeakers and electronics should be capable of handling the full dynamic range of digital recordings. In addition, the extended bass and tonal accuracy of CD have increased the demands on loudspeakers and electronics alike.

AR's acoustic suspension bass loading system, which reproduces deep bass cleanly, clearly and with low distortion, is ideal for taking full advantage of digital's bass naturalness and power. In fact, it could be said that the acoustic suspension system has come of age with CD.

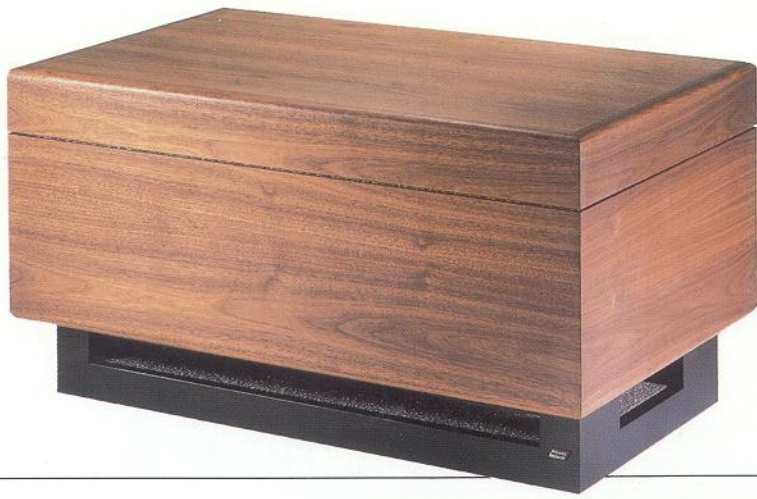
In addition, we've striven to design our loudspeakers to take maximum advantage of the wide dynamic range of CD and, known for the world's first suspended-subchassis belt-drive turntable, we're also fully aware of the superior sound reproduction available from a well-engineered turntable playing vinyl records.

That's why the Legend and EB101 turntables are such desirable additions to any hi-fi system. They really do sound better, but then so do all AR's products.

• AR44BX •







• AR 55BX •

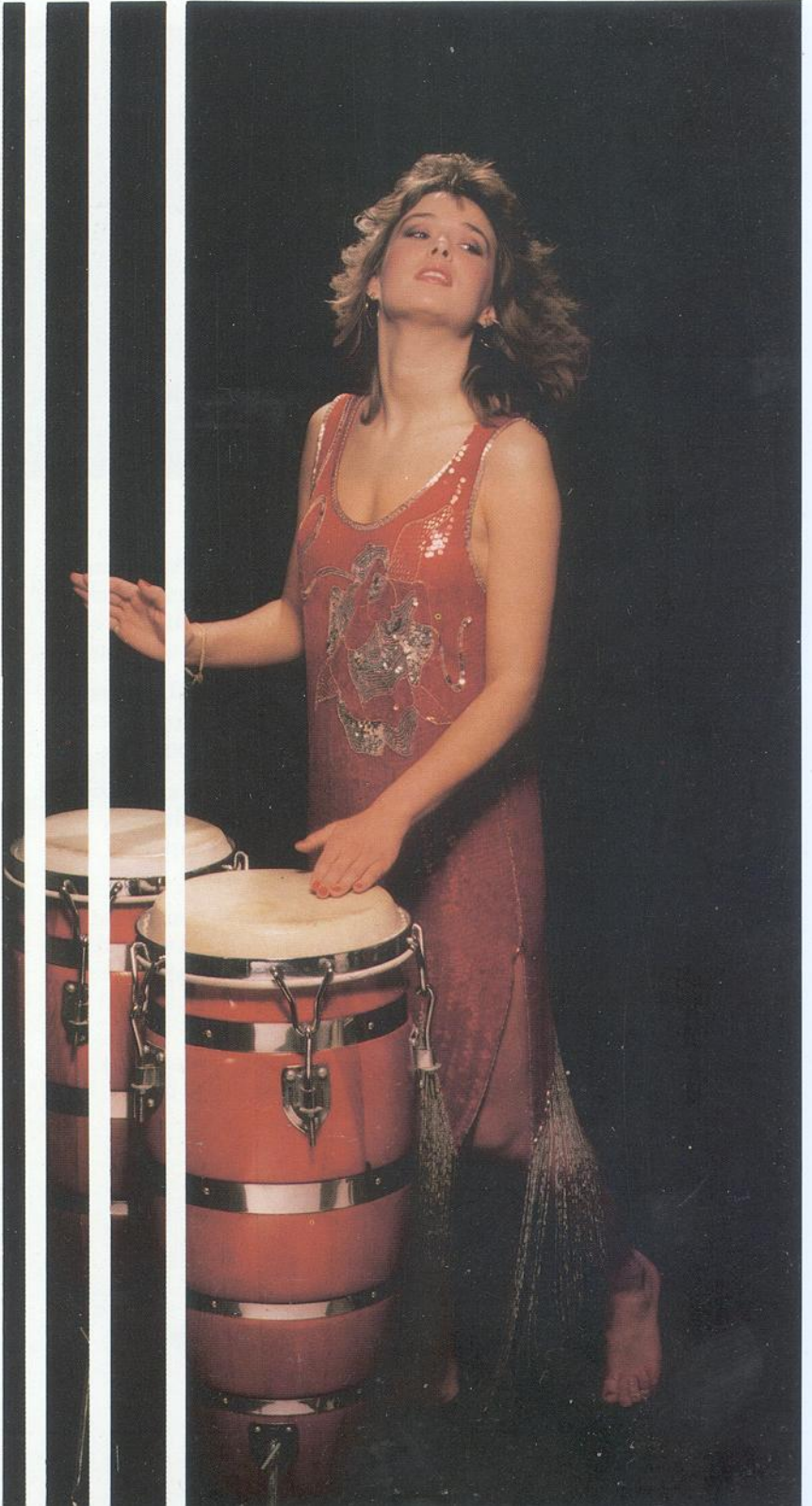
AR 66BX •

AR SUBWOOFER •



• AR 33BX •

AR 35BX •





## THE AR PROMISE



Acoustic Research is an Anglo-American company, who for thirty years have been making audiophile products which have significantly advanced the state of the art.

We are one of the very few manufacturers who carry out original research into sound reproduction and psycho-acoustics.

Our invention of the acoustic suspension system and suspended sub-chassis turntable have won the company worldwide acclaim.

In America, AR speakers have consistently been winners of the coveted "Grand Prix Award", while in the UK both speakers and turntables continue to be acclaimed as "Best Buys".

Acoustic Research – because we care enough to give you the very best.





# · S P E C I F I C A T I O N S ·

Model	AR6BX	AR8BX	AR18BX	AR22BX	AR33BX	AR35BX	AR44BX	AR55BX	AR66BX	SUBWOOFER
Frequency Range	–3dB at 70Hz and 25kHz	–3dB at 62Hz and 25kHz	–3dB at 52Hz and 25kHz	–3dB at 55Hz and 20kHz	–3dB at 45Hz and 20kHz	–3dB at 50Hz and 20kHz	–3dB at 45Hz and 20kHz	–3dB at 50Hz and 30kHz	–3dB at 30Hz and 30kHz	–3dB at 31Hz
Sensitivity*	87dB	87dB	89dB	89dB	87dB	87dB	87dB	87dB	90dB	84.5dB for 1w
Amplifier Requirements	10w–50w	10w–75w	10w–75w	10w–100w	15w–100w	10w–100w	15w–150w	15w–150w	20w–200w	15w–200w
Nominal Impedance	8 ohm	8 ohm	8 ohm	8 ohm	4 ohm	6 ohm	6 ohm	6 ohm	4 ohm	4 ohm
Enclosure Type	Acoustic Suspension	Acoustic Suspension	Acoustic Suspension	Acoustic Suspension	Acoustic Suspension with third order loading	Acoustic Suspension with third order loading	Acoustic Suspension	Acoustic Suspension	Acoustic Suspension	Acoustic Suspension
Internal Volume	7.1L 0.25cu.ft.	9.8L 0.35cu.ft.	14.8L 0.52cu.ft.	20L 0.71cu.ft.	27.7L 0.98cu.ft.	30L 1.07cu.ft.	55.2L 1.97cu.ft.	55.2L 19.7cu.ft.	70.7L 2.5cu.ft.	87.8L 3.1cu.ft.
Net weight (Single speaker)	4.2kg 9.2lb	5.7kg 12.54lb	6.8kg 14.96lb	7.9kg 17.42lb	10.4kg 22.88lb	11kg 24.2lb	18.8kg 41.36lb	19.5kg 43lb	35.4kg 78lb	32kg 70lb
Dimensions: mm	356h x 229w x 149d	394h x 244w x 189d	441h x 275w x 210d	470h x 291w x 333d	520h x 320w x 262d	580h x 258w x 275d	700h x 320w x 333d	700h x 320w x 335d	813h x 372w x 345d	416h x 784w x 470d
: ins	14 x 9 x 5 <sup>7</sup> / <sub>8</sub>	15½ x 9 <sup>5</sup> / <sub>8</sub> x 7 <sup>3</sup> / <sub>8</sub>	17 <sup>3</sup> / <sub>8</sub> x 10 <sup>13</sup> / <sub>16</sub> x 8¼	18½ x 11 <sup>7</sup> / <sub>16</sub> x 9 <sup>3</sup> / <sub>16</sub>	20½ x 12¾ x 10 <sup>3</sup> / <sub>8</sub>	22 <sup>7</sup> / <sub>8</sub> x 10 <sup>3</sup> / <sub>16</sub> x 10 <sup>7</sup> / <sub>8</sub>	23¾ x 12¾ x 13 <sup>1</sup> / <sub>8</sub>	23¾ x 12¾ x 13 <sup>3</sup> / <sub>16</sub>	32 x 14 <sup>5</sup> / <sub>8</sub> x 13 <sup>5</sup> / <sub>8</sub>	16 <sup>3</sup> / <sub>8</sub> x 30 <sup>7</sup> / <sub>8</sub> x 18½
Conditions of Use	Wall or shelf mounting	Wall, shelf, or stand mounting	Wall or stand mounting	Wall or stand mounting	Stand mounting away from walls	Stand mounting away from walls	Stand mounting away from walls	Stand mounting away from walls	Stand mounting away from walls	Floor standing
Features	Low-mass one inch liquid-cooled tweeter and specially-treated paper woofer for responsive, detailed sound	Carbon-loaded polypropylene cones and a one-inch low-mass liquid-cooled tweeter for low coloration and detailed treble.			Carbon-loaded polypropylene cones for low coloration and naturalness, and soft-dome liquid-cooled tweeter for smooth detailed treble.			One inch titanium-dome tweeter for smooth, detailed, uncolored treble and polypropylene cones for naturalness		
Finish	Walnut colour wood-grain vinyl						Real oiled walnut veneer			

Model	AR LEGEND	AR EB101
Drive System	Belt Drive	Belt Drive
Motor:	24-pole synchronous motor, 250 rpm at 50Hz, 300 rpm at 60Hz.	12-pole synchronous motor, 500 rpm at 50Hz, 600 rpm at 60Hz.
Speeds	33 <sup>1</sup> / <sub>2</sub> and 45 rpm	33 <sup>1</sup> / <sub>2</sub> and 45 rpm
Platter	1.8kg (3.9lb)	1.8kg (3.9lb)
Suspension	Arm and platter on fully isolated sub-chassis formed by three-point spring-suspended and damped die-cast 'T' bar.	Arm and platter on fully isolated sub-chassis formed by pressed-steel 'T' bar, spring-suspended and damped at 3 points.
Wow and Flutter	0.04% (DIN 45507)	0.05% (DIN 45507)
Rumble	–73dB (DIN 45539B)	–73dB (DIN 45539B)
Mains Voltage	110–120V or 220–240V 50Hz or 60Hz	110–120V or 220–240V 50Hz or 60Hz
Power consumption	9 watts	9 watts
Dimensions: mm	462w x 387d x 179h	442w x 375d x 180h
: ins	18 <sup>1</sup> / <sub>4</sub> x 15 <sup>1</sup> / <sub>4</sub> x 7	17 <sup>3</sup> / <sub>8</sub> x 14 <sup>3</sup> / <sub>4</sub> x 7 <sup>1</sup> / <sub>8</sub>

Model	AR TONEARM
Effective length	229mm
Overhang	16mm
Friction	Less than 30mg horizontal or vertical.
Effective Mass	12 grams
Cartridge Weight range	3–9 grams
Tracking force range	0.5–3 grams
Fitted Cartridge	Moving magnet

\* Measured with 2.83V input at 1 metre.

**Note:** Since it is the policy of Acoustic Research to continuously incorporate Engineering improvements into its products, all specifications are subject to change without notice.

**THE AR WARRANTY** A lot of loudspeaker manufacturers guarantee their systems against defects in parts and workmanship. So does Acoustic Research. But we do something that few other companies do. We guarantee our speaker performance as well, within ±1 dB of its design specifications, for a full five years from the date of purchase.

AR warrants that the AREB101 turntable and tone arm shall be free of defects in materials and workmanship for a period of one year from the date of purchase. The AR Legend is covered by a three year warranty. This warranty covers parts, repair, labour and surface freight to and from the factory or the nearest Authorised Service Centre.

High Street, Houghton Regis, Dunstable,  
Bedfordshire LU5 5QJ, England  
330 Turnpike Street, Canton,  
Massachusetts 02021, USA

